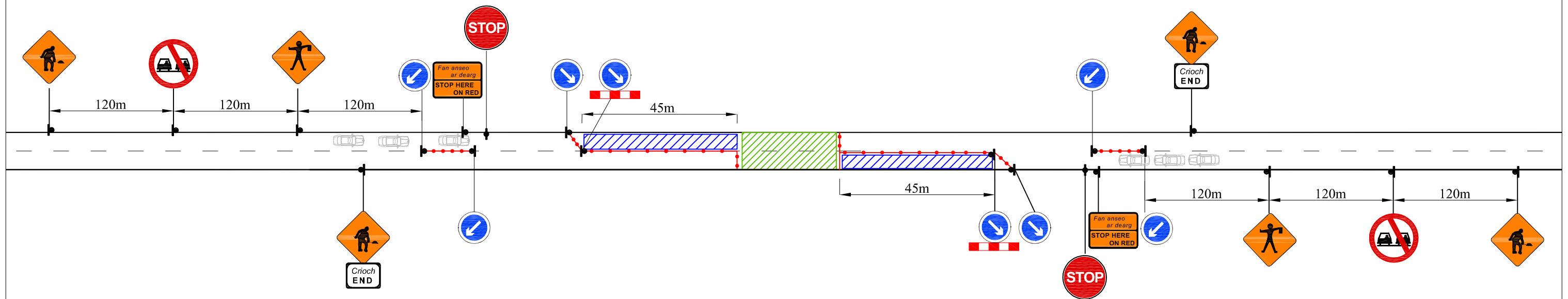


Typical Detail for Stop and Go System.



Typical Detail for All Stop System.

LEGEND	Design Parameters for Level 2(i) Type B:	Note:	
Sign Location	1. Statutory Speed of the road - 80km/h	1. All signs to comply with Chapter 8 of the "Traffic Signs Manual"-Guidance Document.	12. "End of Roadworks" sign placed 20m to 50m from end of works area.
Lateral Safety Zone	2. Distance between Advance Signs: 120m	2. All Traffic Management to be carried out in accordance with Chapter 8 of the "Traffic Signs Manual".	13. Minimum lane width of 3m to be maintained at all times
Approved Barrier System	3. Number of Advance Signs: 4No (3No)	3. Detailed Risk Assessment to be carried out prior to the Replacement of Traffic Management System.	14. Works to be completed at off peak traffic times.
Traffic Cones	4. Minimum Visibility of Signs: 90m	4. Exact sign positions to be agreed on site.	15. All Stop to be in place for maximum of 4 minutes.
Works Area Surrounded with Approved Barrier	5. Longitudinal Safety Zone: 45m	5. All safety zones to be maintained at all times.	
Longitudinal Safety Zone	6. Lateral Safety Zone: 1.2m	6. All affected Parties and An Garda Siochana to be notified prior to works commencing.	
	7. Leading Taper: 45 deg	7. Signs to be positioned so as not to cause an obstruction to other road users.	
	8. Maximum at Tapers Cone Space: 1m	8. All signs to be 600 X 600 mm and faced with retro-reflective material to class ref 2 of EN 12899.	
	9. Maximum Longitudinal Cone Space: 12m	9. All delineation devices should be designed in accordance with IS EN 13422.	
		10. All signage to be as per table 8.2.4.6 of the "Traffic Signs Manual" - Guidance Document.	



Rev:	Description:	Date:	Job Details:	Drawing:	Dwg no:
			Proposed Installation of ESB Overhead Conductor at Monavea County Laois	Typical Traffic Management Plan for All Stop / Stop and Go System	03
			Sheet:	Drawn By:	Rev:
			CAD File ref.:	Date:	Scale:
				Feb 2024	As Shown