



Summary Report

FOR

UPGRADE/INSTALLATION OF
BROADBAND NETWORK

AT

DA071, Municipal District of Borris-in-
Ossory-Mountmellick, Co. Laois

ON BEHALF OF

National Broadband Ireland

Prepared by
Enviroguide Consulting

Dublin

3D Core C, Block 71, The Plaza,
Park West, Dublin 12

Kerry

19 Henry Street
Kenmare, Co. Kerry

Wexford

Unit 11 Floor B
Westpoint Business Park
Clonard Road, Wexford

www.enviroguide.ie
 info@enviroguide.ie
 +353 1 565 4730



DOCUMENT CONTROL SHEET

Client	National Broadband Ireland
Project Title	Upgrade/Installation of Broadband Network at DA071 Municipal District of Borris-in-Ossory-Mountmellick
Document Title	Drop Network Summary Report

Revision	Status	Author(s)	Reviewed	Approved	Issue Date
1.0	Draft for client review	<i>Shannen O'Brien Ecologist</i>	<i>Colin Lennon Technical Director</i>	<i>Colin Lennon Technical Director</i>	26/07/2021

REPORT LIMITATIONS

Synergy Environmental Ltd. t/a Enviroguide Consulting (hereafter referred to as “Enviroguide”) has prepared this report for the sole use of National Broadband Ireland in accordance with the Agreement under which our services were performed. No other warranty, expressed or implied, is made as to the professional advice included in this Report or any other services provided by Enviroguide.

The information contained in this Report is based upon information provided by others and upon the assumption that all relevant information has been provided by those parties from whom it has been requested and that such information is accurate. Information obtained by Enviroguide has not been independently verified by Enviroguide, unless otherwise stated in the Report.

The methodology adopted and the sources of information used by Enviroguide in providing its services are outlined in this Report.

The work described in this Report is based on the conditions encountered and the information available during the said period of time. The scope of this Report and the services are accordingly factually limited by these circumstances.

All work carried out in preparing this report has used, and is based upon, Enviroguide’s professional knowledge and understanding of the current relevant national legislation. Future changes in applicable legislation may cause the opinion, advice, recommendations or conclusions set out in this report to become inappropriate or incorrect. However, in giving its opinions, advice, recommendations and conclusions, Enviroguide has considered pending changes to environmental legislation and regulations of which it is currently aware. Following delivery of this report, Enviroguide will have no obligation to advise the client of any such changes, or of their repercussions.

Enviroguide disclaim any undertaking or obligation to advise any person of any change in any matter affecting the Report, which may come or be brought to Enviroguide’s attention after the date of the Report.

Certain statements made in the Report that are not historical facts may constitute estimates, projections or other forward-looking statements and even though they are based on reasonable assumptions as of the date of the Report, such forward-looking statements by their nature involve risks and uncertainties that could cause actual results to differ materially from the results predicted. Enviroguide specifically does not guarantee or warrant any estimate or projections contained in this Report.

Unless otherwise stated in this Report, the assessments made assume that the sites and facilities will continue to be used for their current purpose without significant changes.

The content of this report represents the professional opinion of experienced environmental consultants. Enviroguide does not provide legal advice or an accounting interpretation of liabilities, contingent liabilities or provisions.

If the scope of work includes borings, test pits or engineering interpretation of such information, attention is drawn to the fact that special risks occur whenever engineering and related disciplines are applied to identify subsurface conditions. Even a comprehensive sampling and testing programme implemented in accordance with best practice and a professional standard of care may fail to detect certain conditions. The environmental, geological, geotechnical, geochemical and hydrogeological conditions that Enviroguide interprets to exist between sampling points may differ from those that actually exist. Passage of time, natural occurrences and activities on and/or near the site may substantially alter encountered conditions.

Copyright © This Report is the copyright of Enviroguide Consulting Ltd. any unauthorised reproduction or usage by any person other than the addressee is strictly prohibited.

TABLE OF CONTENTS

LIST OF TABLES	III
LIST OF FIGURES.....	III
1 OVERVIEW.....	IV
1.1 PROJECT OVERVIEW	IV
1.2 IDENTIFICATION OF RELEVANT NATURA 2000 SITES.....	IV
1.3 IDENTIFICATION OF POTENTIAL IMPACTS.....	15
1.3.1 <i>Intersecting features within Natura 2000 sites in Borris-in-Ossory-Mountmellick Municipal District</i>	
16	
2 CONCLUDING STATEMENT	19

LIST OF TABLES

Table 1 Drop poles within Borris-in-Ossory-Mountmellick Municipal District and Natura 2000 sites ... 16

LIST OF FIGURES

Figure 1 Drop poles in Borris-in-Ossory-Mountmellick Municipal District.....	6
Figure 2 Drop poles adjacent to Slieve Bloom Mountains SPA in Borris-in-Ossory-Mountmellick Municipal District.....	7
Figure 3 Drop poles adjacent to Slieve Bloom Mountains in the Borris-in-Ossory-Mountmellick Municipal District	8
Figure 4 Drop poles in Borris-in-Ossory-Mountmellick Municipal District.....	9
Figure 5 Drop poles in Borris-in-Ossory-Mountmellick Municipal District.....	10
Figure 6 Drop poles in Borris-in-Ossory-Mountmellick Municipal District.....	11
Figure 7 Drop poles in Borris-in-Ossory-Mountmellick Municipal District.....	12
Figure 8 Drop poles in Borris-in-Ossory-Mountmellick Municipal District.....	13
Figure 9 Drop poles in Borris-in-Ossory-Mountmellick Municipal District.....	14

1 OVERVIEW

1.1 Project Overview

This report is a summary of the appropriate assessment screening report undertaken on the proposed deployment of broadband infrastructure for Design Area (DA) 071, Roscrea. This summary report focuses specifically on Drop poles which National Broadband Ireland (NBI) will install only when customers have placed an order for the provision of broadband service through a 3rd party reseller. This report will summarise the assessment of the installation of drop infrastructure within the Borris-in-Ossory-Mountmellick Municipal District and discuss any likely significant effects that may arise within Natura 2000 sites as a result of the Proposed Project. The Proposed Project entails the upgrade and installation of telecommunications infrastructure to buildings in Roscrea and surrounding areas, covering a total area of 407km².

Drop infrastructure is defined by NBI as items of infrastructure which will not be installed until customers have placed an order for the provision of broadband service through a 3rd party reseller. Drop poles are distinct from Network Build poles i.e., items of infrastructure which are integral to the implementation of the National Broadband Plan (NBP) throughout the state.

The installation of Broadband Network Infrastructure at DA071 Roscrea, Co. Tipperary, including the Borris-in-Ossory-Mountmellick municipal district area, is comprehensively assessed in Appropriate Assessment (AA) Screening Report ref. AA_Screening_DA071_Roscrea_Enviroguide. The AA Screening report assesses the likelihood of significant effects arising from the Proposed Development including the installation of both network build and drop poles.

The purpose of this MD summary report and the above referenced AA Screening Report is to provide information for the relevant competent authority to carry out the screening for Appropriate Assessment and other applicable statutory functions including licences issued under Section 254 of the Planning and Development Act 2000 (as amended).

1.2 Identification of Relevant Natura 2000 Sites

The proposed installation location of new drop infrastructure is presented in Figure 1. The details of each of the 47 no. drop poles to be installed within the Borris-in-Ossory-Mountmellick Municipal District is presented in Table 1.

To identify whether any of the items of infrastructure are proposed to be installed with a Natura 2000 site the following process is undertaken on all DAs:

- Using a Geographic Information System (GIS) the locations of all new proposed items of infrastructure are overlayed onto the locations of all Natura 2000 sites in Ireland and Northern Ireland.
- Analysis is performed using the GIS which will identify each individual feature proposed to be installed within a Natura 2000 site.
- If individual features are identified they are recorded and presented on a drawing or series of drawings as required.

Using the described methodology, it was identified that inside the Borris-in-Ossory-Mountmellick Municipal District that no items of proposed Drop poles will be installed within Clonaslee Eskers And Derry Bog SAC, Coolrain Bog SAC, Cullahill Mountain SAC, Knockacoller Bog SAC, Lisbigney Bog SAC, Mountmellick SAC, River Barrow And River Nore SAC, Slieve Bloom Mountains SAC, River Nore SPA, and Slieve Boom Mountains SPA.

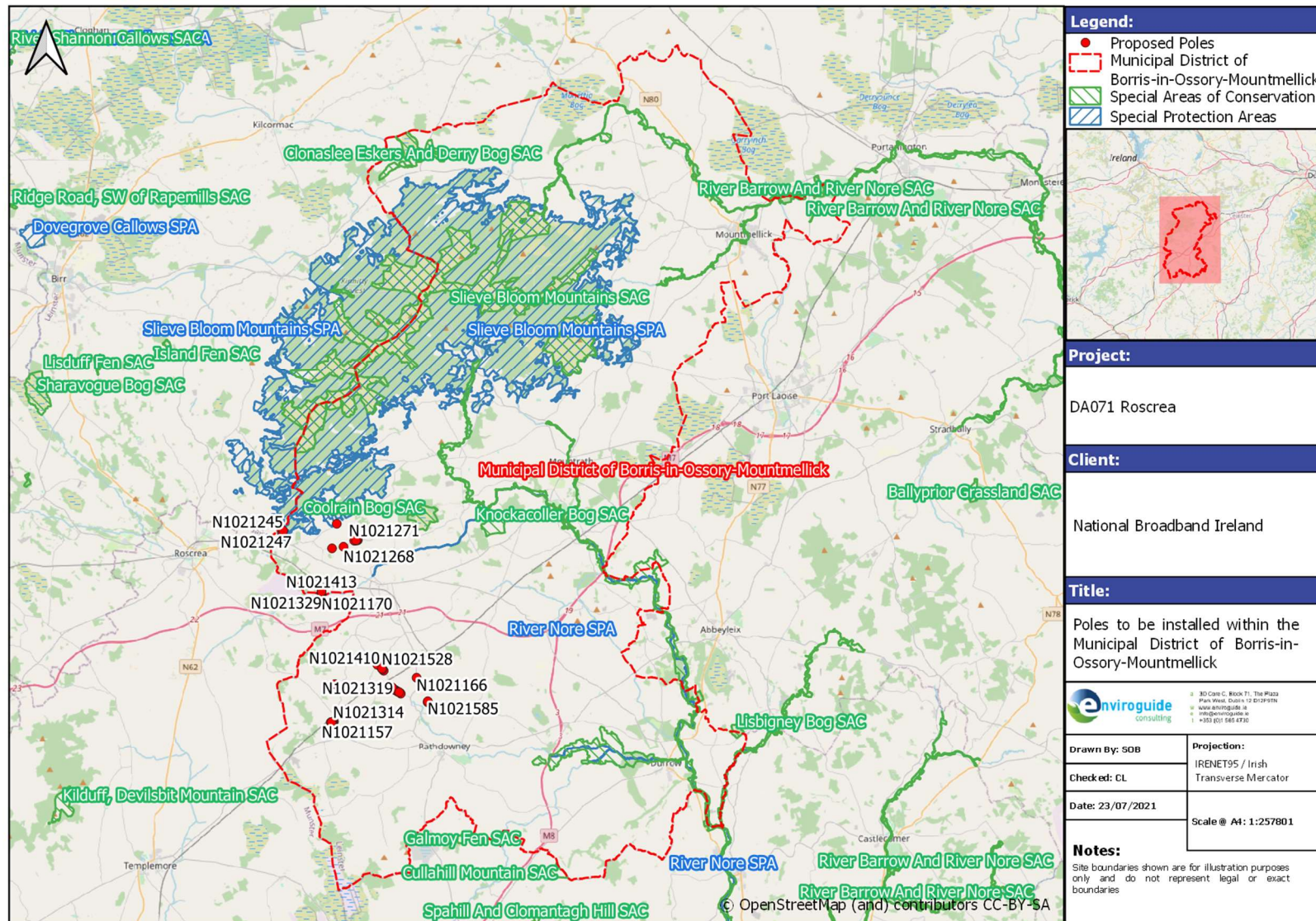


FIGURE 1 DROP POLES IN BORRIS-IN-OSSORY-MOUNTMELICK MUNICIPAL DISTRICT

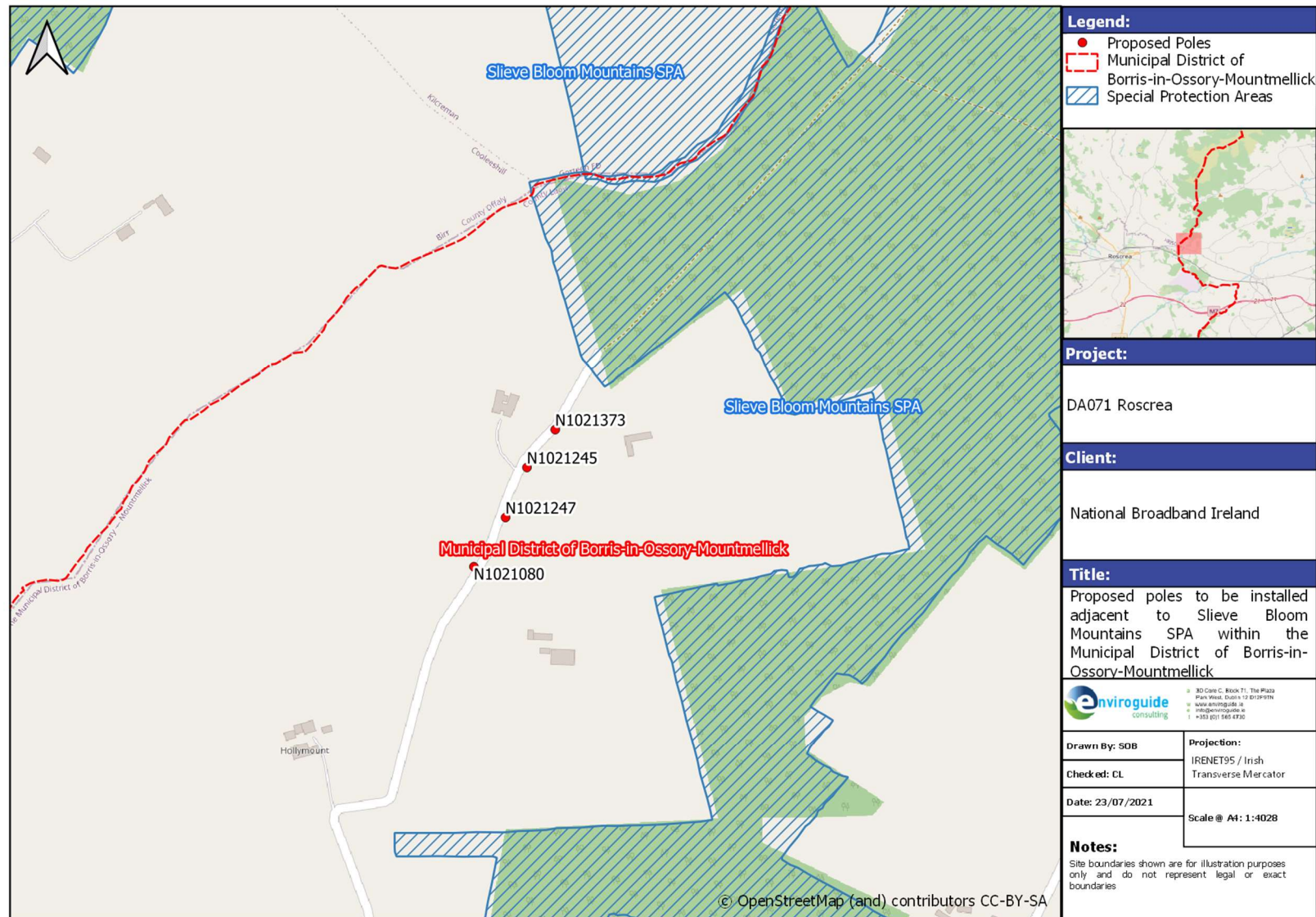


FIGURE 2 DROP POLES ADJACENT TO SLIEVE BLOOM MOUNTAINS SPA IN BORRIS-IN-OSSORY-MOUNTMELICK MUNICIPAL DISTRICT

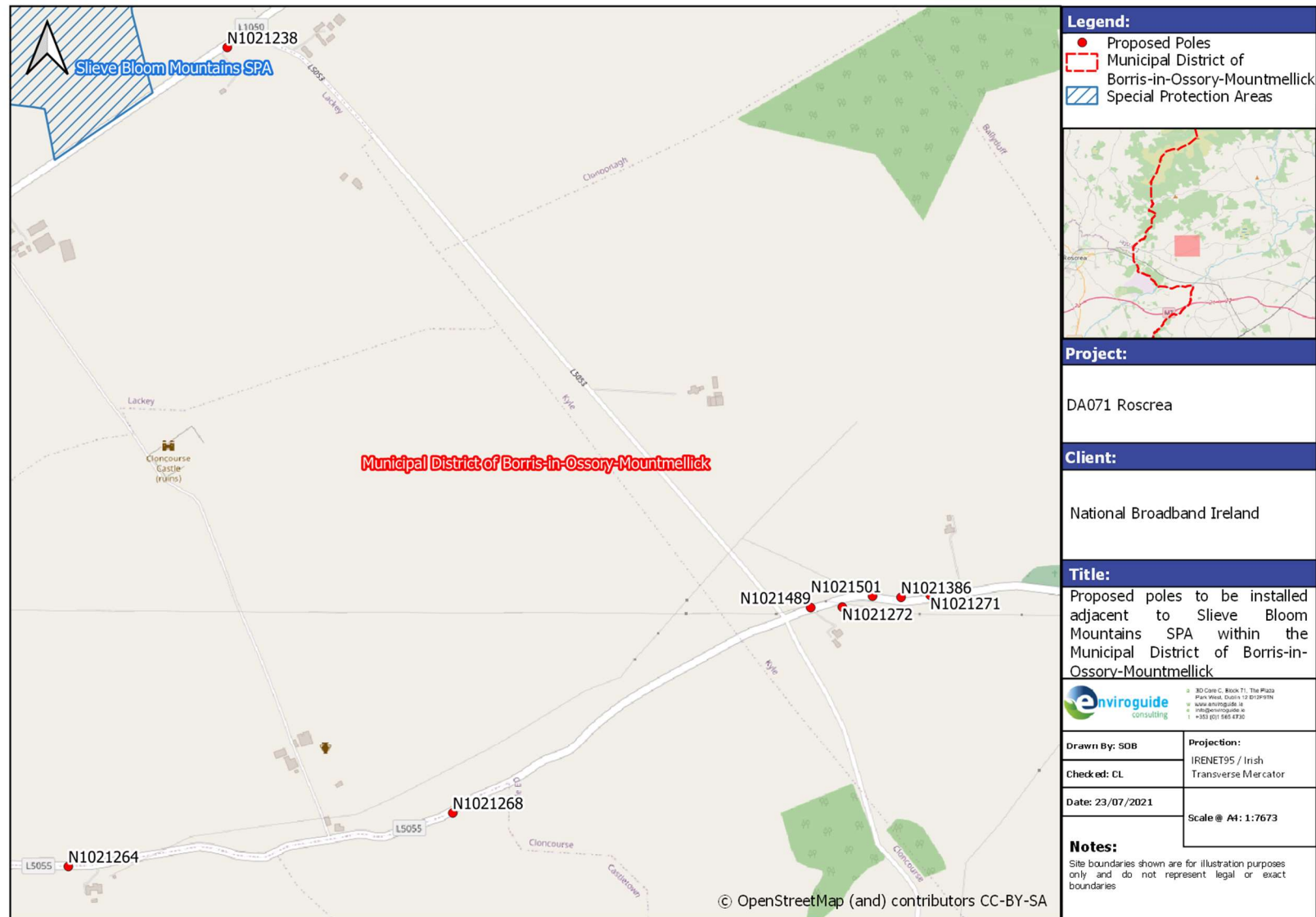


FIGURE 3 DROP POLES ADJACENT TO SLIEVE BLOOM MOUNTAINS IN THE BORRIS-IN-OSSORY-MOUNTMELICK MUNICIPAL DISTRICT

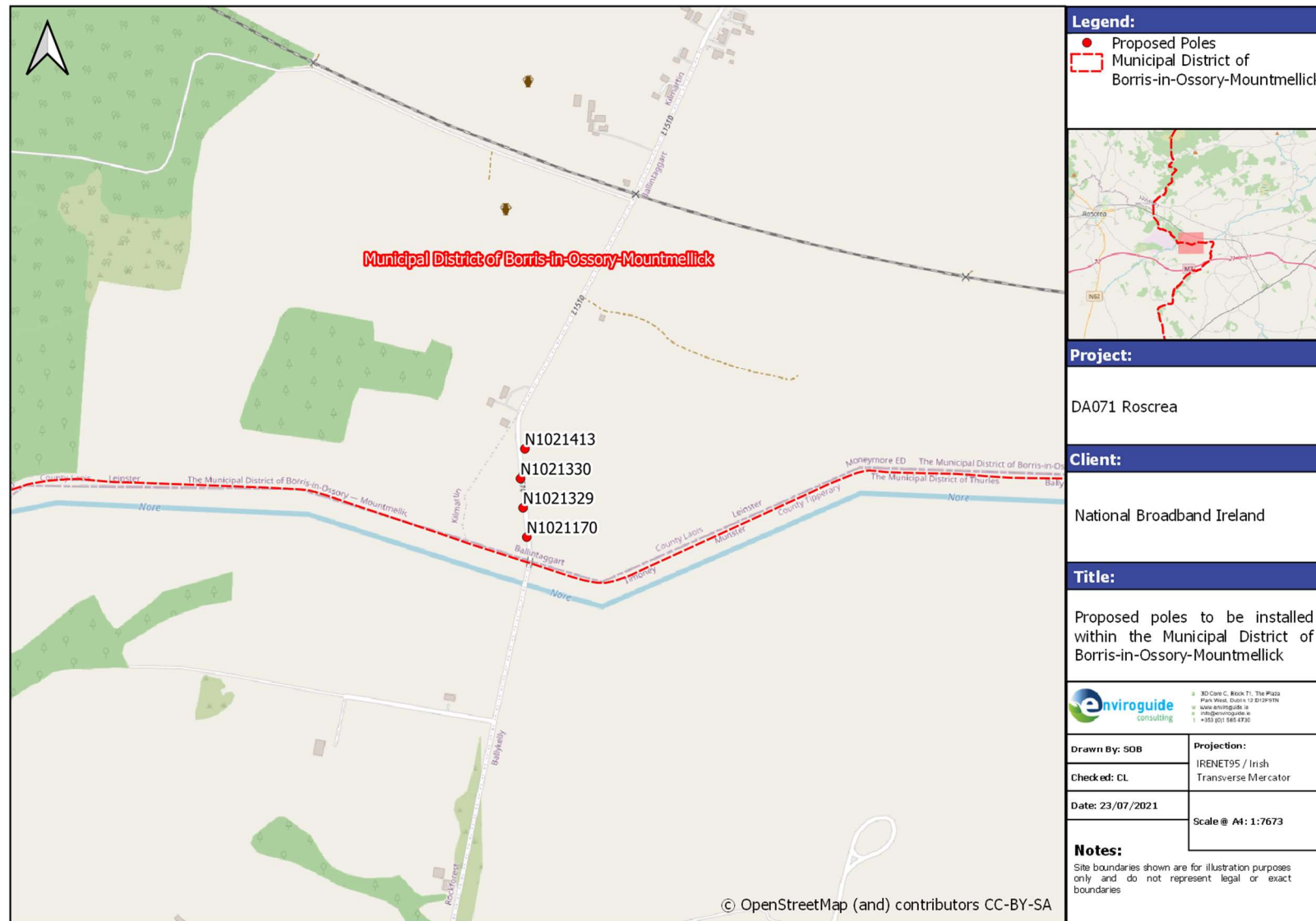


FIGURE 4 DROP POLES IN BORRIS-IN-OSSORY-MOUNTMELICK MUNICIPAL DISTRICT

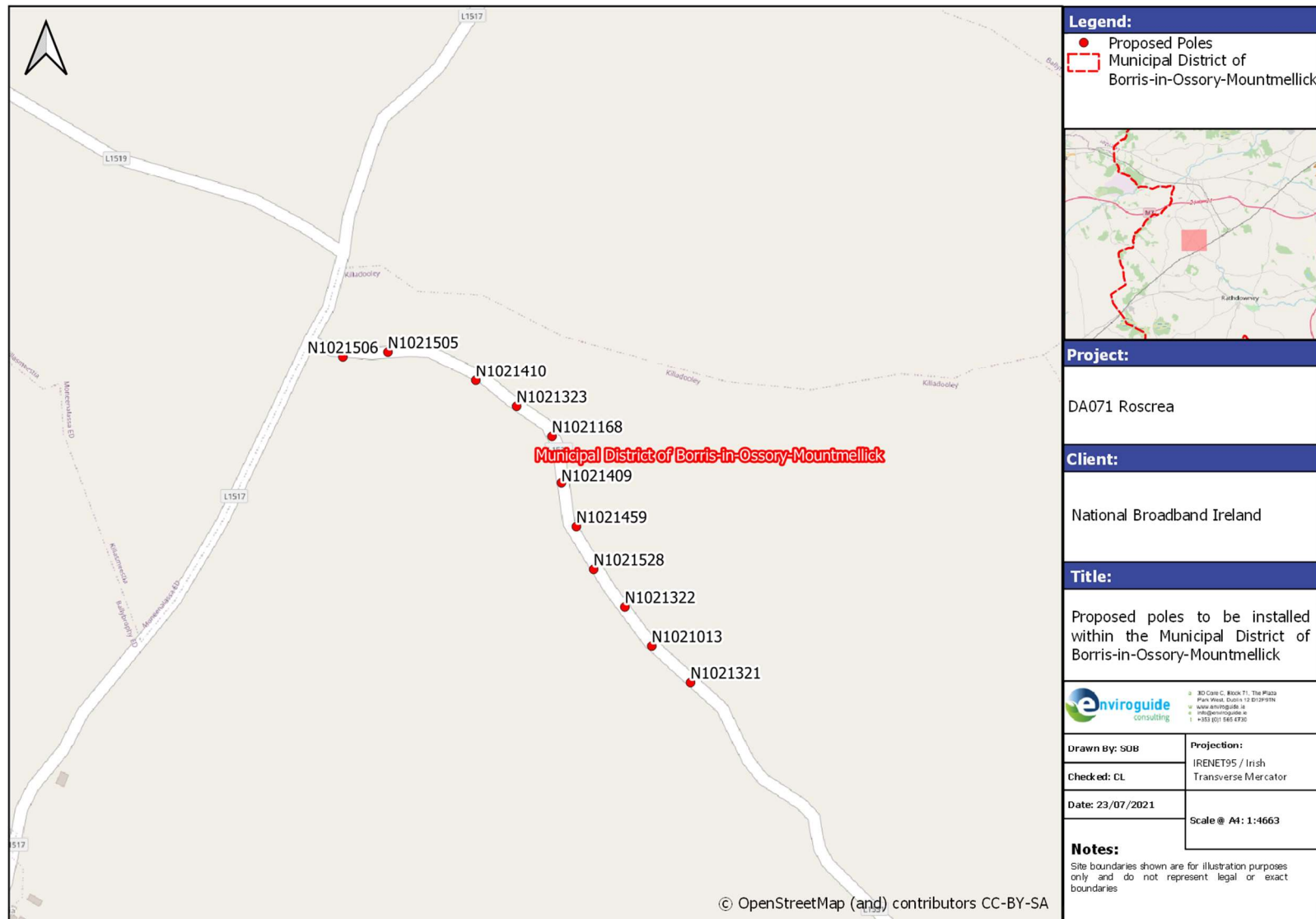


FIGURE 5 DROP POLES IN BORRIS-IN-OSSORY-MOUNTMELICK MUNICIPAL DISTRICT

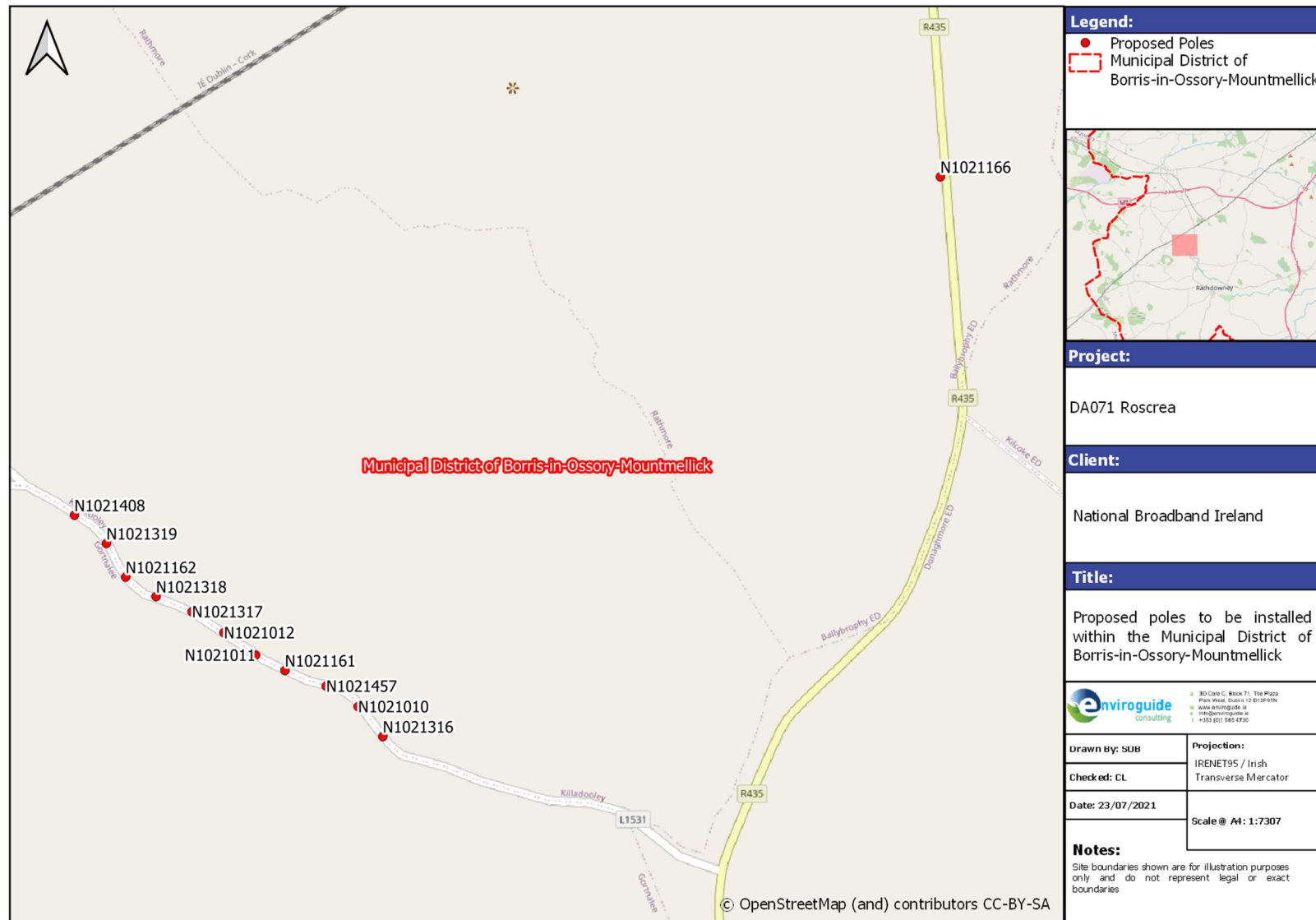


FIGURE 6 DROP POLES IN BORRIS-IN-OSSORY-MOUNTMELICK MUNICIPAL DISTRICT

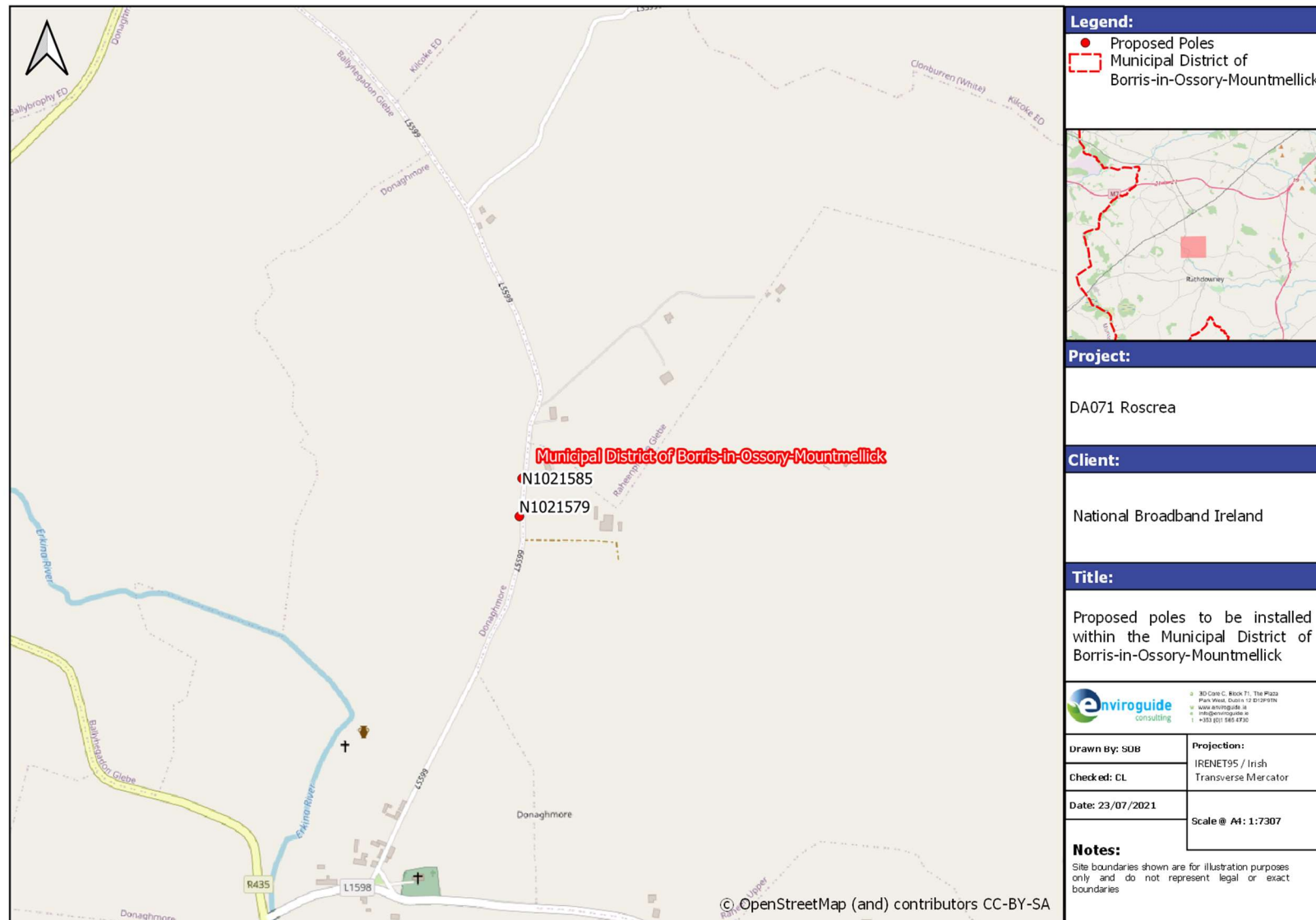


FIGURE 7 DROP POLES IN BORRIS-IN-OSSORY-MOUNTMELICK MUNICIPAL DISTRICT

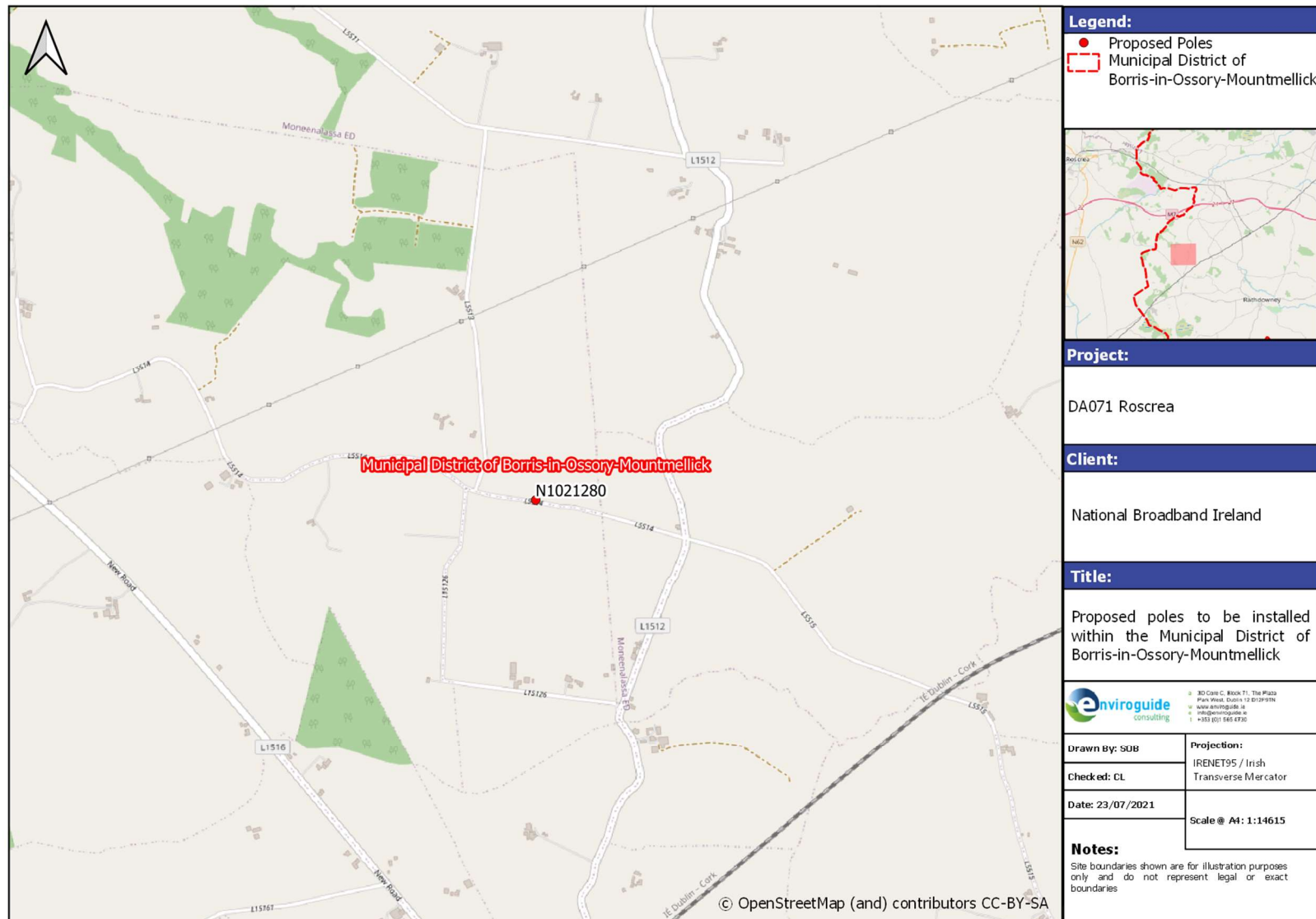


FIGURE 8 DROP POLES IN BORRIS-IN-OSSORY-MOUNTMELICK MUNICIPAL DISTRICT

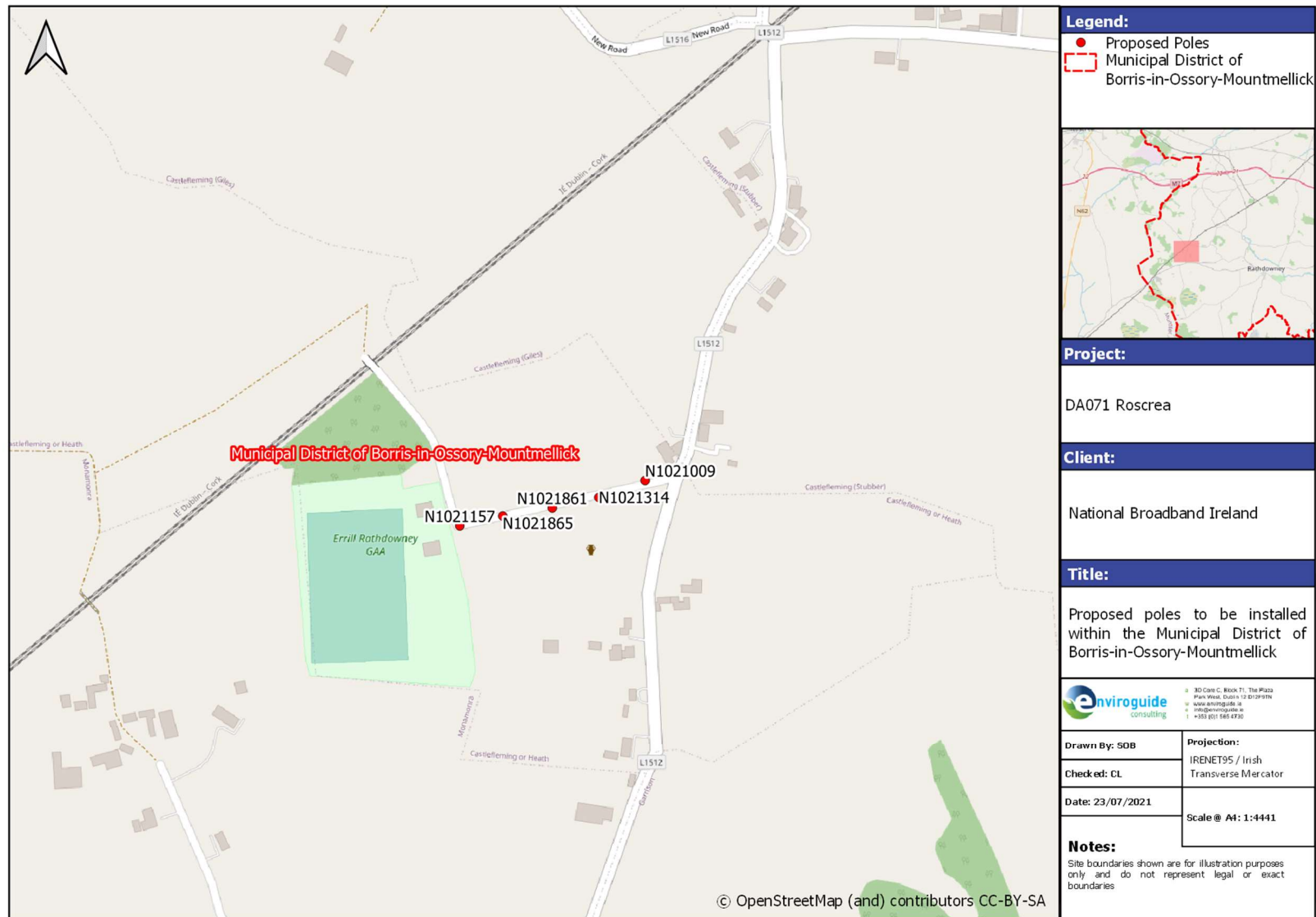


FIGURE 9 DROP POLES IN BORRIS-IN-OSSORY-MOUNTMELICK MUNICIPAL DISTRICT

1.3 Identification of Potential Impacts

The AA Screening report prepared for DA071 reviewed and assessed Information available on the Natura 2000 network of sites to establish whether the installation and operation of the Proposed Project has the potential to have an impact on any of the conservation objectives of associated sites. The assessment framework used in the preparation of the AA Screening report was taken from the best practice guidelines issued by the European Commission “Assessment of plans and projects significantly affecting Natura 2000 sites – Methodological guidance”.

The installation element of this project will involve the erection of new poles, installation of new underground chambers and underground duct sections. There may be some release of suspended solids into watercourses during such excavations; however, these will be small in nature, extremely localised and of very short duration as all surplus material is removed from site for compliant waste management.

In addition, the replacement poles being erected may carry the risk of contamination of soil and/or groundwater with creosote which is used as a preservative for telecommunications poles. Creosote is a dense non-aqueous liquid (DNAPL) which is not soluble in water. Therefore, the risk associated with its use will be extremely localised by virtue of it not migrating through the watercourse or soil. The impact therefore associated with its use can be deemed imperceptible.

The potential for fugitive dust emissions will be minimal and temporary as each mini excavation required to install a pole will be completed within a short period of time with water used as a dampening down medium in cases of extreme weather.

The AA Screening report prepared for DA071 considered the potential for significant impacts resulting from the Proposed Project based on a range of indicators, including:

- Habitat loss or alteration;
- Habitat/species fragmentation;
- Disturbance and/or displacement of species.
- Changes in population density; and
- Changes in water quality and resource.

It was deemed by the AA Screening Report that the Proposed Project will not have a significant adverse effect on the Conservation Objectives for Sharavogue Bog SAC, Slieve Bloom Mountains SAC, Coolrain Bog SAC, Scohaboy (Sopwell) Bog SAC, Island Fen SAC, Lisduff Fen SAC, River Barrow and River Nore SAC, Knockacoller Bog SAC, Kilduff, Devilsbit Mountain SAC, Liskeen Fen SAC, Galmoy Fen SAC, Ballyduff/Clonfinane Bog SAC, Arragh More (Derrybreen) Bog SAC, Kilcarren-Firville Bog SAC, Clonaslee Eskers and Derry Bog SAC, Cullahill Mountain SAC, Spahill And Clomantagh Hill SAC, Lough Derg, North-east Shore SAC, Ridge Road, SW of Rapemills SAC, All Saints Bog and Esker SAC, Slieve Bloom Mountains SPA, River Nore SPA, Dovegrove Callows SPA, River Little Brosna Callows SPA, Lough Derg (Shannon) SPA and All Saints Bog SPA.

1.3.1 Intersecting features within Natura 2000 sites in Borris-in-Ossory-Mountmellick Municipal District

The Proposed Project route passes adjacent to Clonaslee Eskers And Derry Bog SAC, Coolrain Bog SAC, Cullahill Mountain SAC, Knockacoller Bog SAC, Lisbigney Bog SAC, Mountmellick SAC, River Barrow And River Nore SAC, Slieve Bloom Mountains SAC, River Nore SPA, and Slieve Boom Mountains SPA at localised points over several different locations combined.

In the case of the Borris-in-Ossory-Mountmellick Municipal District, none of the proposed new Drop poles will be installed within Clonaslee Eskers And Derry Bog SAC, Coolrain Bog SAC, Cullahill Mountain SAC, Knockacoller Bog SAC, Lisbigney Bog SAC, Mountmellick SAC, River Barrow And River Nore SAC, Slieve Bloom Mountains SAC, River Nore SPA, and Slieve Boom Mountains SPA.

Each installation location was surveyed as part of the pre-build design process. Table 1 identifies each individual item of equipment within the Borris-in-Ossory-Mountmellick Municipal District and describes the proposed installation locations and whether the proposed feature is to be installed within a Natura 2000 site.

Table 1 and Figure 1 to Figure 9 demonstrate that all items of infrastructure for the Proposed Project within the Borris-in-Ossory-Mountmellick Municipal District will be installed along the existing road network, in locations that consist primarily of grassy roadside verges and hedging.

TABLE 1 DROP POLES WITHIN BORRIS-IN-OSSORY-MOUNTMELICK MUNICIPAL DISTRICT AND NATURA 2000 SITES

Barcode/Duct Label	Infrastructure Type	Location - Public	Site Name
N1021157	Utility Pole	Grass	Proposed infrastructure not located within a Natura 2000 site in the Borris-in-Ossory-Mountmellick MD
N1021865	Utility Pole	Grass	Proposed infrastructure not located within a Natura 2000 site in the Borris-in-Ossory-Mountmellick MD
N1021861	Utility Pole	Grass	Proposed infrastructure not located within a Natura 2000 site in the Borris-in-Ossory-Mountmellick MD
N1021314	Utility Pole	Grass	Proposed infrastructure not located within a Natura 2000 site in the Borris-in-Ossory-Mountmellick MD
N1021009	Utility Pole	Grass	Proposed infrastructure not located within a Natura 2000 site in the Borris-in-Ossory-Mountmellick MD
N1021579	Utility Pole	Grass	Proposed infrastructure not located within a Natura 2000 site in the Borris-in-Ossory-Mountmellick MD
N1021585	Utility Pole	Grass	Proposed infrastructure not located within a Natura 2000 site in the Borris-in-Ossory-Mountmellick MD
N1021316	Utility Pole	Grass	Proposed infrastructure not located within a Natura 2000 site in the Borris-in-Ossory-Mountmellick MD
N1021010	Utility Pole	Grass	Proposed infrastructure not located within a Natura 2000 site in the Borris-in-Ossory-Mountmellick MD

N1021457	Utility Pole	Grass	Proposed infrastructure not located within a Natura 2000 site in the Borris-in-Ossory-Mountmellick MD
N1021161	Utility Pole	Grass	Proposed infrastructure not located within a Natura 2000 site in the Borris-in-Ossory-Mountmellick MD
N1021011	Utility Pole	Grass	Proposed infrastructure not located within a Natura 2000 site in the Borris-in-Ossory-Mountmellick MD
N1021012	Utility Pole	Grass	Proposed infrastructure not located within a Natura 2000 site in the Borris-in-Ossory-Mountmellick MD
N1021317	Utility Pole	Grass	Proposed infrastructure not located within a Natura 2000 site in the Borris-in-Ossory-Mountmellick MD
N1021318	Utility Pole	Grass	Proposed infrastructure not located within a Natura 2000 site in the Borris-in-Ossory-Mountmellick MD
N1021162	Utility Pole	Grass	Proposed infrastructure not located within a Natura 2000 site in the Borris-in-Ossory-Mountmellick MD
N1021319	Utility Pole	Grass	Proposed infrastructure not located within a Natura 2000 site in the Borris-in-Ossory-Mountmellick MD
N1021408	Utility Pole	Grass	Proposed infrastructure not located within a Natura 2000 site in the Borris-in-Ossory-Mountmellick MD
N1021280	Utility Pole	In Hedge	Proposed infrastructure not located within a Natura 2000 site in the Borris-in-Ossory-Mountmellick MD
N1021166	Utility Pole	Grass	Proposed infrastructure not located within a Natura 2000 site in the Borris-in-Ossory-Mountmellick MD
N1021321	Utility Pole	In Hedge	Proposed infrastructure not located within a Natura 2000 site in the Borris-in-Ossory-Mountmellick MD
N1021013	Utility Pole	In Hedge	Proposed infrastructure not located within a Natura 2000 site in the Borris-in-Ossory-Mountmellick MD
N1021322	Utility Pole	In Hedge	Proposed infrastructure not located within a Natura 2000 site in the Borris-in-Ossory-Mountmellick MD
N1021528	Utility Pole	In Hedge	Proposed infrastructure not located within a Natura 2000 site in the Borris-in-Ossory-Mountmellick MD
N1021459	Utility Pole	In Hedge	Proposed infrastructure not located within a Natura 2000 site in the Borris-in-Ossory-Mountmellick MD
N1021409	Utility Pole	In Hedge	Proposed infrastructure not located within a Natura 2000 site in the Borris-in-Ossory-Mountmellick MD
N1021168	Utility Pole	In Hedge	Proposed infrastructure not located within a Natura 2000 site in the Borris-in-Ossory-Mountmellick MD
N1021323	Utility Pole	Grass	Proposed infrastructure not located within a Natura 2000 site in the Borris-in-Ossory-Mountmellick MD
N1021410	Utility Pole	In Hedge	Proposed infrastructure not located within a Natura 2000 site in the Borris-in-Ossory-Mountmellick MD
N1021506	Utility Pole	In Hedge	Proposed infrastructure not located within a Natura 2000 site in the Borris-in-Ossory-Mountmellick MD
N1021505	Utility Pole	Grass	Proposed infrastructure not located within a Natura 2000 site in the Borris-in-Ossory-Mountmellick MD

N1021170	Utility Pole	Grass	Proposed infrastructure not located within a Natura 2000 site in the Borris-in-Ossory-Mountmellick MD
N1021329	Utility Pole	Grass	Proposed infrastructure not located within a Natura 2000 site in the Borris-in-Ossory-Mountmellick MD
N1021330	Utility Pole	Grass	Proposed infrastructure not located within a Natura 2000 site in the Borris-in-Ossory-Mountmellick MD
N1021413	Utility Pole	Grass	Proposed infrastructure not located within a Natura 2000 site in the Borris-in-Ossory-Mountmellick MD
N1021264	Utility Pole	Grass	Proposed infrastructure not located within a Natura 2000 site in the Borris-in-Ossory-Mountmellick MD
N1021268	Utility Pole	Grass	Proposed infrastructure not located within a Natura 2000 site in the Borris-in-Ossory-Mountmellick MD
N1021489	Utility Pole	Grass	Proposed infrastructure not located within a Natura 2000 site in the Borris-in-Ossory-Mountmellick MD
N1021272	Utility Pole	Grass	Proposed infrastructure not located within a Natura 2000 site in the Borris-in-Ossory-Mountmellick MD
N1021386	Utility Pole	Grass	Proposed infrastructure not located within a Natura 2000 site in the Borris-in-Ossory-Mountmellick MD
N1021501	Utility Pole	Grass	Proposed infrastructure not located within a Natura 2000 site in the Borris-in-Ossory-Mountmellick MD
N1021271	Utility Pole	In Hedge	Proposed infrastructure not located within a Natura 2000 site in the Borris-in-Ossory-Mountmellick MD
N1021080	Utility Pole	Grass	Proposed infrastructure not located within a Natura 2000 site in the Borris-in-Ossory-Mountmellick MD
N1021247	Utility Pole	Grass	Proposed infrastructure not located within a Natura 2000 site in the Borris-in-Ossory-Mountmellick MD
N1021245	Utility Pole	Grass	Proposed infrastructure not located within a Natura 2000 site in the Borris-in-Ossory-Mountmellick MD
N1021373	Utility Pole	Grass	Proposed infrastructure not located within a Natura 2000 site in the Borris-in-Ossory-Mountmellick MD
N1021238	Utility Pole	Grass	Proposed infrastructure not located within a Natura 2000 site in the Borris-in-Ossory-Mountmellick MD

2 CONCLUDING STATEMENT

The Proposed Project consisting of the installation of Broadband Network at DA071 Roscrea, Co. Tipperary, has been assessed taking into account:

- the nature, size and location of the proposed works and possible impacts arising from the construction works.
- the qualifying interests and conservation objectives of the Natura sites
- the potential for in-combination effects arising from other plans and projects.

In conclusion, upon the examination, analysis and evaluation of the relevant information and applying the precautionary principle, it is concluded by the authors of this report that, on the basis of objective information; the possibility **may be excluded** that the Proposed Project will have a likely significant effect on any of the Natura 2000 sites listed below:

Clonaslee Eskers And Derry Bog SAC (000859)

Coolrain Bog SAC (002332)

Cullahill Mountain SAC (000831)

Knockacoller Bog SAC (002333)

Lisbigney Bog SAC (000869)

Mountmellick SAC (002141)

River Barrow And River Nore SAC (002162)

Slieve Bloom Mountains SAC (000412)

River Nore SPA (004233)

Slieve Bloom Mountains SPA (004160)

Thus, it can be concluded on the basis of the results of Stage 1 of the Appropriate Assessment process that there is no requirement to proceed to Stage 2 of said process; and the preparation of a Natura Impact Statement (NIS) is not required.