



Date: 17/06/2020 Author: JN Project: Laois

Temporary Traffic Management to enable Tracblast with a 2 way Stop/Go or Traffic Light system for Re-Texturing works on the N77, Thomastown Demense, Durrow County Laois.

Manifest	
36 x	Cone
9 x	RUS 006 Keep Left
4 x	WK 001 Roadworks Ahead
4 x	WK 060 Temporary Traffic Signals
4 x	WK 061 Flagman Ahead
2 x	Density Technician
2 x	P 010 End
2 x	Portable lane control
2 x	RUS 014 No Overtaking
2 x	RUS 060 Stop and Go Disk - STOP
2 x	RUS 061 Stop and Go Disk - GO
2 x	W 184 Barrier Board
2 x	WK 095 Stop Here on Red
1 x	Pick up Truck
1 x	Rack Truck
1 x	tray truck
1 x	Watch guard vehicle
1 x	Water Truck
1 x	work truck

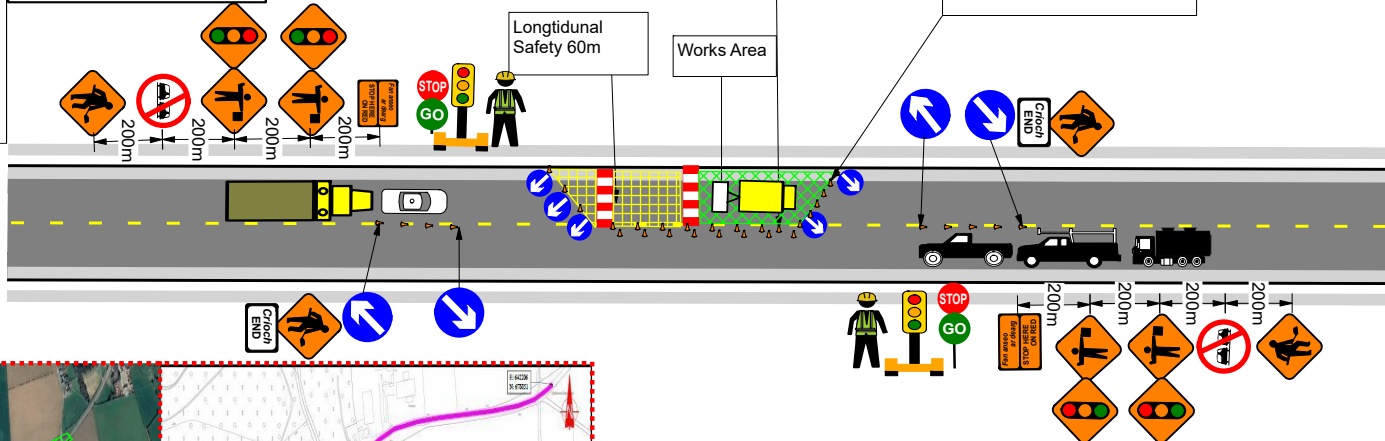
Note 1
Written dimensions are preferred, do not scale dimensions. All dimensions to be checked before work commences and any discrepancies reported. All traffic management to be carried out in accordance to section 8 of the traffic signs manual in force at any time of works.

Note 2
All signage to be erected outside visibility splays at junctions and site access.

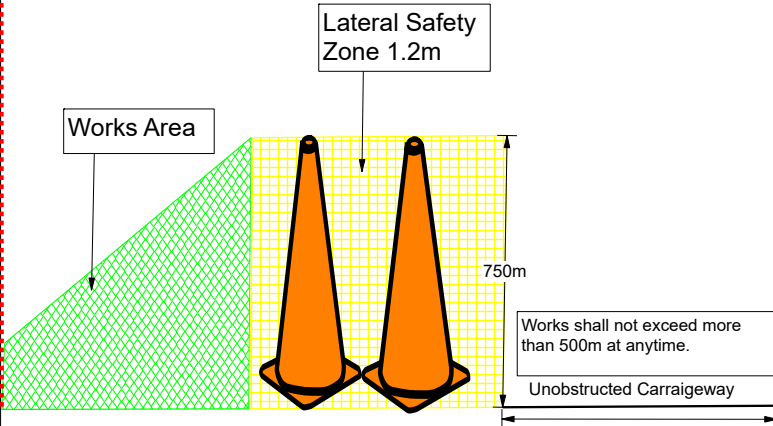
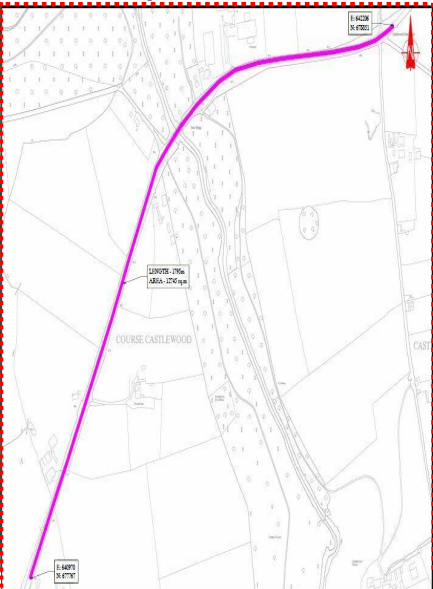
Note 3
Interaction with locals and landowners will be carried out by tracblast personal before works commence to ensure minimum disruption during the duration of the works.

Note 4
This Temporary Traffic Management Plan may only be implemented by a TTOS supervisor who must carry out site specific risk assessment to modify if necessary the measurements described to suit the actual site conditions.

Legend	
	Cone
	Safety Zone
	Work Area



- Works will not exceed 500m.
- Tapers will be changed on all stop basis to enable works to commence on opposite live carriageway



Works shall not exceed more than 500m at anytime.

Design Parameters	
Single Carraigeway	- 80/100km
Roadworks Type	- Type A/B
Speed Limit	- 80/100km
Sign Visibility	- 120m
Number of signs	- 4 advanced per side
Cumulative Distance (m)	- 200m
Advance Sign Distance (m)	- 600m
Safety Move	
Longitudinal Safety (m)	- 60m
Lateral Safety (m)	- 1.2m
Traffic Management System	
Method	- Stop/Go
	- Traffic Lights