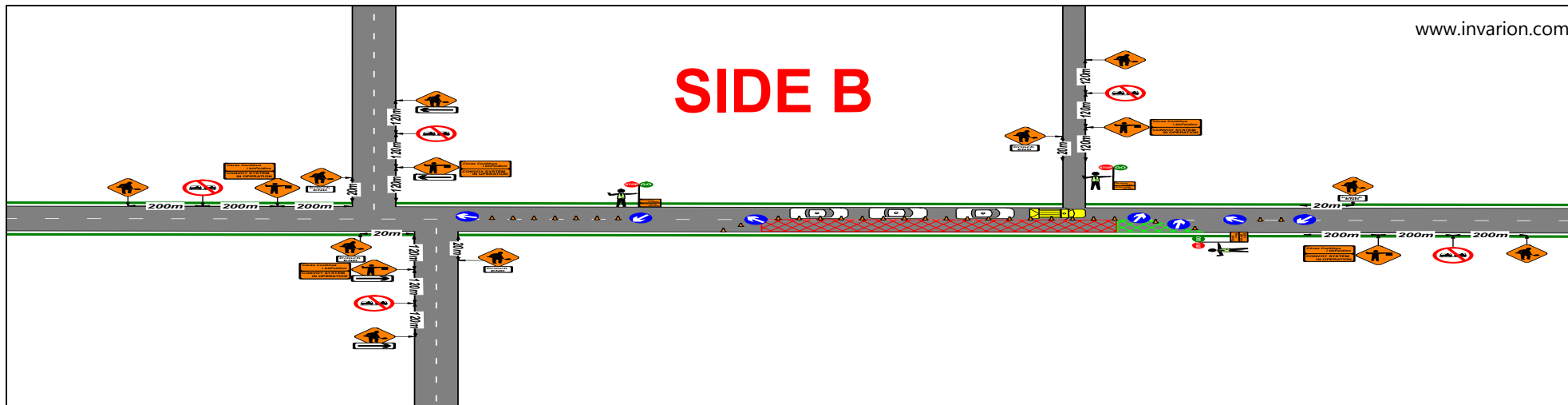
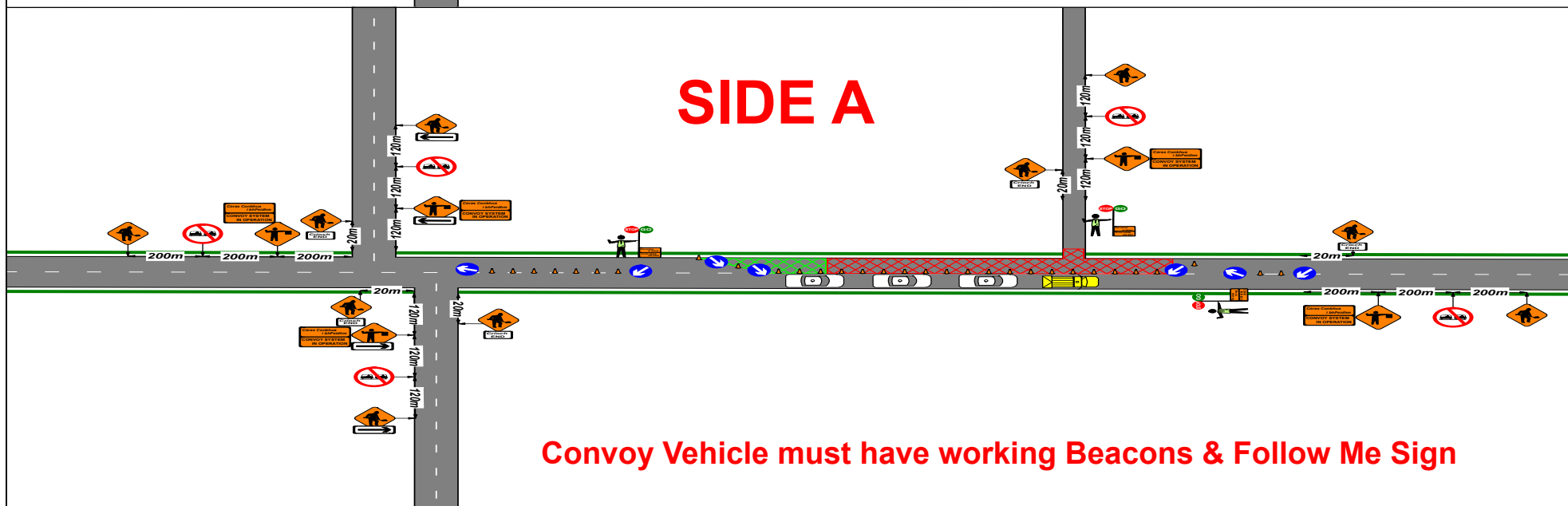


# SIDE B



# SIDE A



**Convoy Vehicle must have working Beacons & Follow Me Sign**

Design Parameters		Rate Of Tapers		Cone Spacing		Site Access Signs	Notes	T.T.OS Notes/Observations	
Road Class	Level 2(ii)	Lane Taper	45°	@ Taper	1m	 Wk 620 Wk 630 will be used when a designated works access is required. T.T.OS on site to decide safest place for signage. Ref to CH 8 for Usage	1. All works to be carried out in accordance with local Authority requirements		
Works Type	Type B	Shoulder Taper	N/A	Longitudinal	12m		2. Daily inspection & maintenance of T.M setup to be carried out to ensure the safety & integrity of the T.M setup		
Speed Limit	100km/h	Setback	N/A	Driving Lane	3m-min	<b>Cross Section Detail</b>	3. All T.M systems to be setup in accordance with Chapter 8 regulations with respect to sign, lighting, guarding		
<b>Temporary Signs</b>		<b>Safety Zones</b>		<b>Job Detail</b>		 <b>O/H Powerline Detail</b>	4. All signs used will conform to those specified in the TM Plan and also conform to TS4 regulations		
Visibility	120m	Longitudinal	60m	Diversion Route Length	N/A		5. Contractors shall remain responsible to provision of any access ramps due to height variations in any paved surface as a result of works		
Approach Sign	3	Lateral	1.2m	Diversion Route Length	N/A		6. TM Plans do not take into consideration underground services		
Sign Spacing	200m								
<b>LAOIS HIRE</b> TRAFFIC MANAGEMENT DIVISION		<b>Client</b> Coogan Plant Hire		<b>Legend</b>			<b>TM Method</b> Two way Stop/Go & Convoy	<b>Location</b> N77 Colt Co Laois	<b>GPS Coordinates</b> 52.962935, -7.342977
						<b>Works Length</b> 400m	<b>Location Client</b> Laois Co Co	<b>PSCS</b> Robbie Coogan	This Plan is NOT to Scale
						<b>3 min Traffic Count</b> N/A	<b>Plan No.</b> Coogan Plant Hire-N77 Colt#001	<b>Works Start Date</b> TBC	<b>Drafted By</b> M.Mchugh
						<b>Plan Date</b> 05-08-2020			<b>Checked By</b> B.Hughes