



Date: 27/05/2019 Author: THM/JC Project: THM

Comments:

Traffic Management Plan to enable THM with emergency road closure on the R435 in Rathdowney.



Enlargement of Northern End of Diversion

Design Parameters	
(Single carriageway 50m/s)	
Road Level	Level 2
Road width Type	Type A/B
Speed Limit	50 km/h
Temporary Signs	
Sign Visibility (m)	75
Number of Signs	3
Cumulative Distance (m)	75
Advance Sign Spacing (m)	25
Rate of Taper	
Taper At Lane	1 in 15
Taper At Road Shoulder	1 in 10
Transition Length	2 x taper
Safety Zone	
Longitudinal (m)	25
Lateral (m)	0.5
Maximum Cone Spacing	3
At Towers (m)	6
Longitudinal (m)	750
Cone Height (m/s)	0
Maximum Lamp Spacing	12
At Towers (m)	3.25
Minimum Lamp Width	
Minimum Lamp Width (m)	
Traffic Management System	Stop & Go
Method	Stop & Go

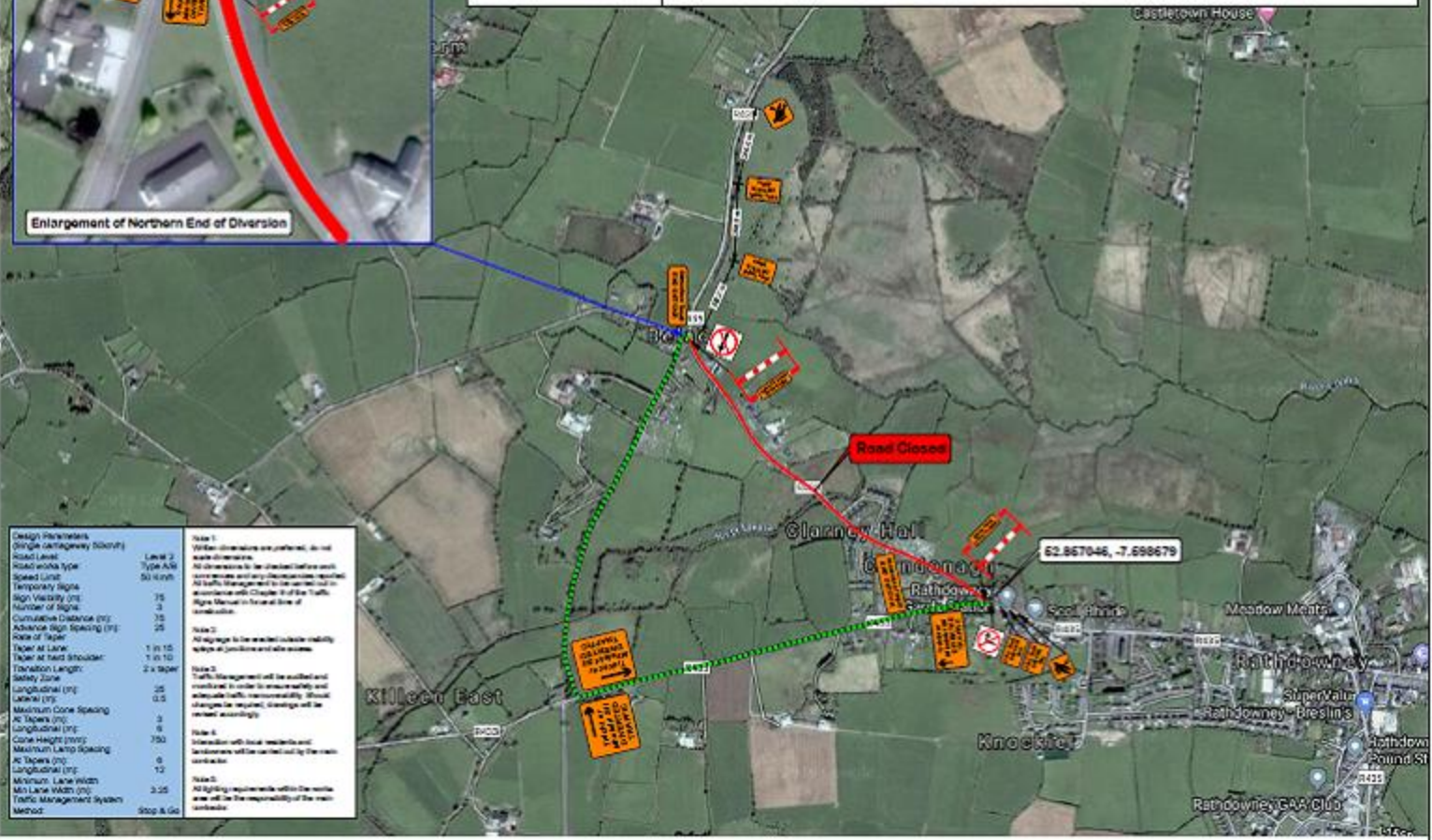
Note 1: Where dimensions are preferred, do not scale dimensions. All dimensions to be checked before work commences and any discrepancies reported. All traffic management to be carried out in accordance with Chapter 11 of the Traffic Signs Manual in the case of line of construction.

Note 2: All signage to be erected outside visibility before at junction and side access.

Note 3: Traffic Management will be established and maintained in order to ensure safety and adequate traffic manoeuvrability. Should changes be required, changes will be notified accordingly.

Note 4: Interaction with local residents and businesses will be carried out by the main contractor.

Note 5: All lighting requirements with the works area will be the responsibility of the main contractor.



62.867046, -7.698679