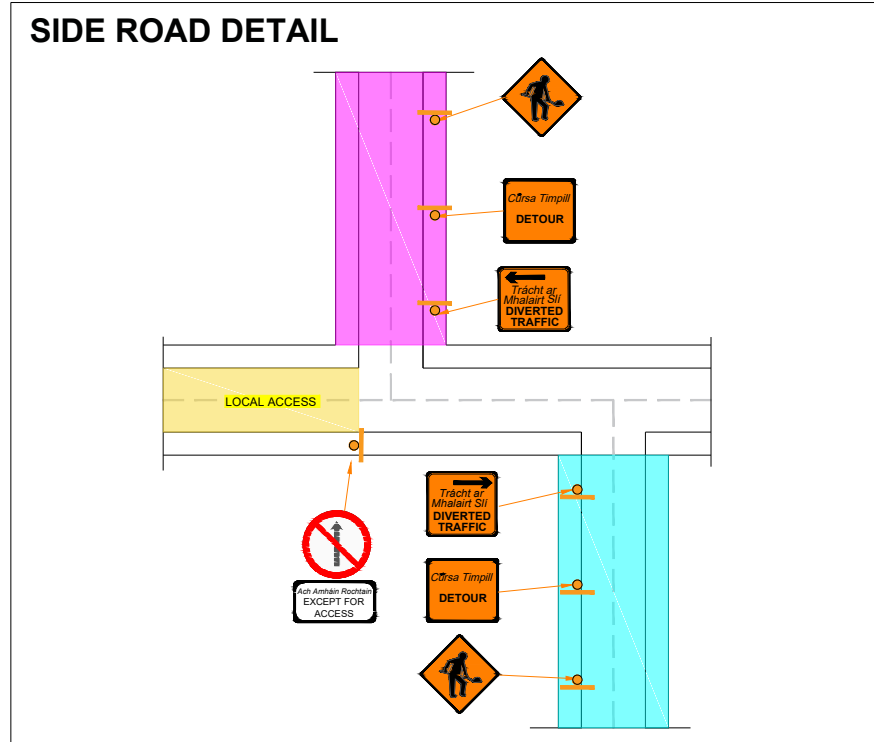
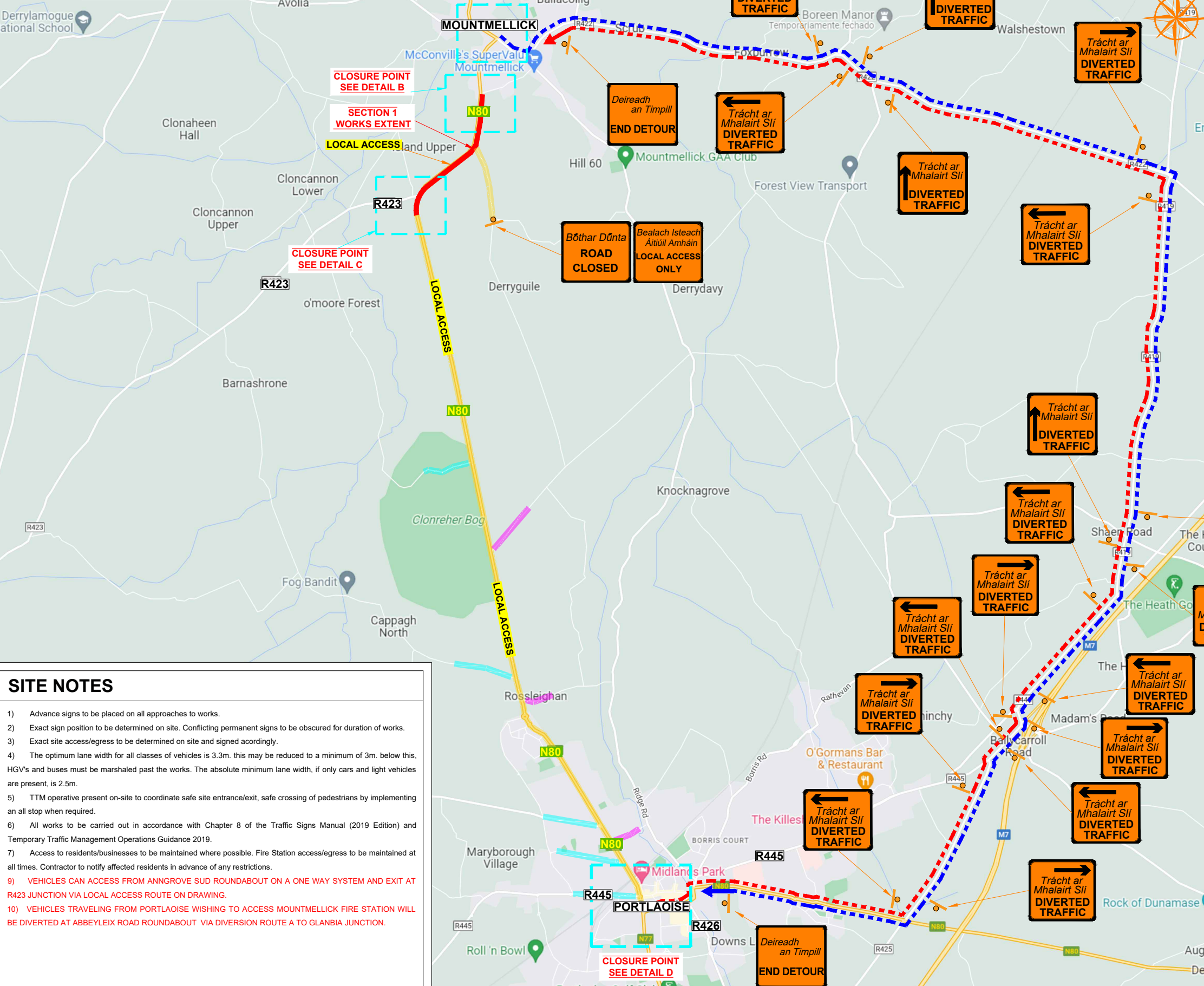


# N80 MOUNTMELLICK PAVEMENT SCHEME

## DIVERSION ROUTE



- ### SITE NOTES
- 1) Advance signs to be placed on all approaches to works.
  - 2) Exact sign position to be determined on site. Conflicting permanent signs to be obscured for duration of works.
  - 3) Exact site access/egress to be determined on site and signed accordingly.
  - 4) The optimum lane width for all classes of vehicles is 3.3m. this may be reduced to a minimum of 3m. below this, HGV's and buses must be marshaled past the works. The absolute minimum lane width, if only cars and light vehicles are present, is 2.5m.
  - 5) TTM operative present on-site to coordinate safe site entrance/exit, safe crossing of pedestrians by implementing an all stop when required.
  - 6) All works to be carried out in accordance with Chapter 8 of the Traffic Signs Manual (2019 Edition) and Temporary Traffic Management Operations Guidance 2019.
  - 7) Access to residents/businesses to be maintained where possible. Fire Station access/egress to be maintained at all times. Contractor to notify affected residents in advance of any restrictions.
  - 9) VEHICLES CAN ACCESS FROM ANNGROVE SUD ROUNDABOUT ON A ONE WAY SYSTEM AND EXIT AT R423 JUNCTION VIA LOCAL ACCESS ROUTE ON DRAWING.
  - 10) VEHICLES TRAVELING FROM PORTLAOISE WISHING TO ACCESS MOUNTMELLICK FIRE STATION WILL BE DIVERTED AT ABBEYLEIX ROAD ROUNDABOUT VIA DIVERSION ROUTE A TO GLANBIA JUNCTION.

**REFER TO DRAWING:  
C22026\_02\_004B  
FOR CLOSURE POINTS DETAILS**



DESIGN PARAMETERS			
Speed Limit	50 km/h	100 km/h	Sign size (diamond) 600mm 750mm
Road Classification	1(iii)	2(ii)	Sign size (circular) 600mm 750mm
Roadworks type	A / B	A / B	Minimum Cone size 750mm/1000mm
Number of advance signs	2	4 / 3	Cone spacing at tapers 3m 3m
Sign visibility	50m	120m	Cone spacing longitudinal 3m 12m
Distance between signs	20m	200m	Lateral Safety Zone 0.5m 1.2m
Taper at lane	1 in 5	1 in 60	Longitudinal Safety Zone 5m 60m
Taper at hard shoulder	1 in 5	1 in 30	Minimum lane width 3.0m 3.0m

LEGEND	
	Works in Place
	Local Access
	Diversion Route A N80 Northbound Traffic
	Diversion Route B N80 Southbound Traffic
	Traffic sign
	Traffic cones
	Traffic Flow

### GENERAL NOTES

- 1) All information contained in this drawing (including digital data) should be checked and verified prior to any stage of construction;
- 2) All works are to be carried out in accordance with local authority requirements and are to be included in the site-specific safety & health plan;
- 3) Site inspections and maintenance of the traffic management layout is to be agreed with local authority to ensure the safety and integrity of the design;
- 4) Contractor to carry out a site risk assessment prior to the installation of any traffic management plan to ensure that conditions reflect those considered for design post submission;
- 5) Contractor shall be responsible for the provision of ramp access at any change in road surface level where traffic runs on a temporary surface, and for pedestrian/cycle ramps where footpath/cycle-ways have a level discontinuity as per result of the works.

Rev	Date	Details	Drn	Chk	App	Drn	BC

Project	N80 MOUNTMELLICK PAVEMENT SCHEME	
Title	TRAFFIC MANAGEMENT PLAN SECTION 1 DIVERSION ROUTE	
Date	14-07-2022	
Scale	A1 NTS	
	A3 NTS	
Stage	CONSTRUCTION	
Drawing No	C22026_02_004A	Rev 0