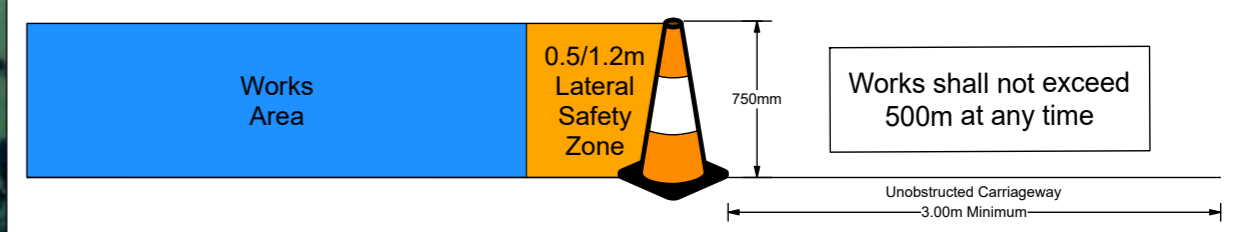




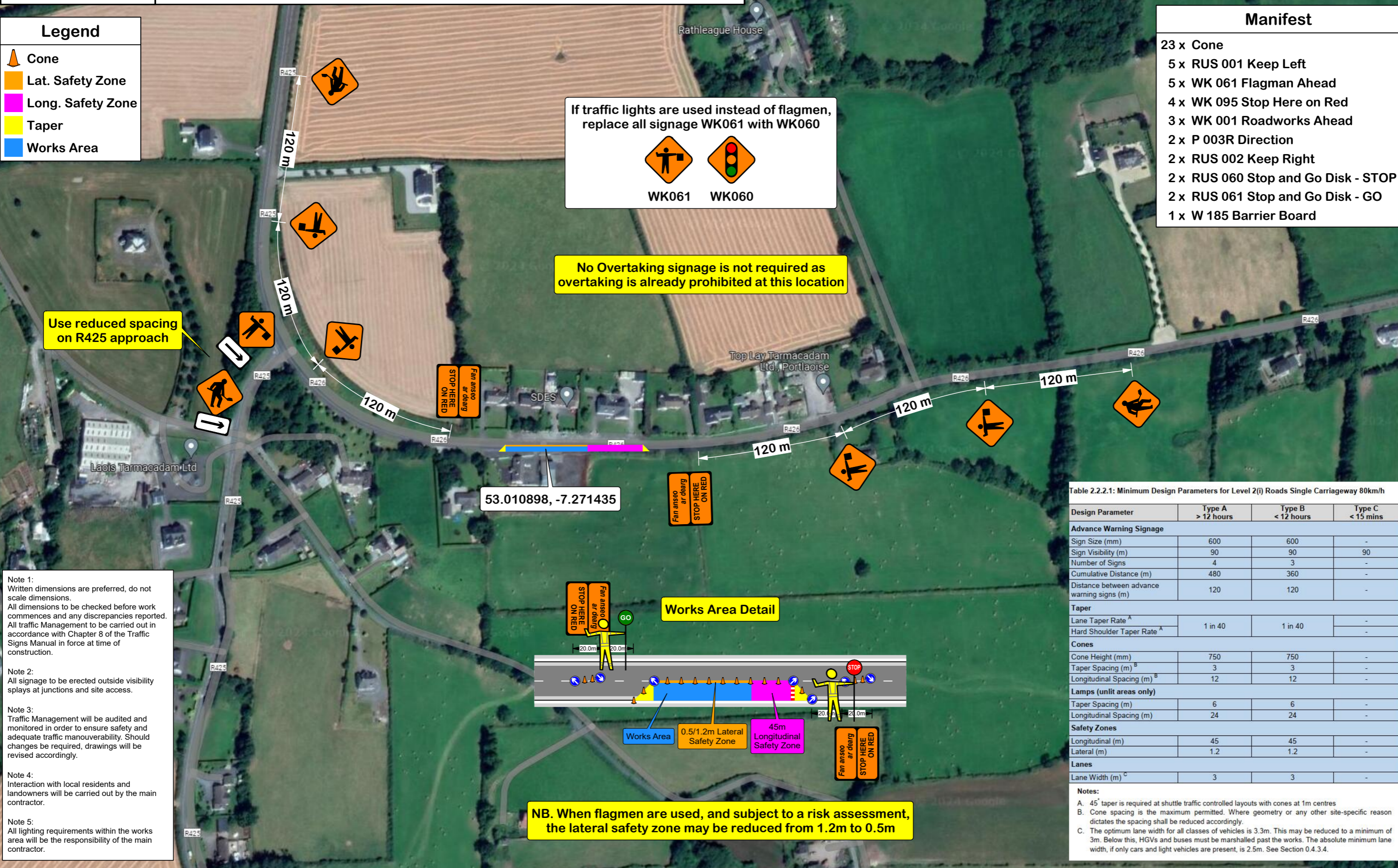
Date: 08/03/2024 **Author:** THM/JC **Project:** THM5958

Comments:
Traffic Management Plan to enable THM with works
[REDACTED] on the R426 in Co. Laois.



- Legend**
- Cone
 - Lat. Safety Zone
 - Long. Safety Zone
 - Taper
 - Works Area

- Manifest**
- 23 x Cone
 - 5 x RUS 001 Keep Left
 - 5 x WK 061 Flagman Ahead
 - 4 x WK 095 Stop Here on Red
 - 3 x WK 001 Roadworks Ahead
 - 2 x P 003R Direction
 - 2 x RUS 002 Keep Right
 - 2 x RUS 060 Stop and Go Disk - STOP
 - 2 x RUS 061 Stop and Go Disk - GO
 - 1 x W 185 Barrier Board



If traffic lights are used instead of flagmen, replace all signage WK061 with WK060

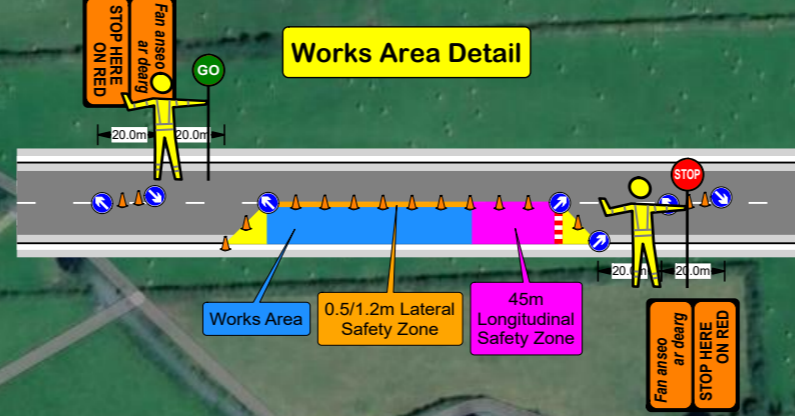
WK061 WK060

No Overtaking signage is not required as overtaking is already prohibited at this location

Use reduced spacing on R425 approach

53.010898, -7.271435

Works Area Detail



NB. When flagmen are used, and subject to a risk assessment, the lateral safety zone may be reduced from 1.2m to 0.5m

- Note 1:** Written dimensions are preferred, do not scale dimensions. All dimensions to be checked before work commences and any discrepancies reported. All traffic Management to be carried out in accordance with Chapter 8 of the Traffic Signs Manual in force at time of construction.
- Note 2:** All signage to be erected outside visibility splays at junctions and site access.
- Note 3:** Traffic Management will be audited and monitored in order to ensure safety and adequate traffic manoeuvrability. Should changes be required, drawings will be revised accordingly.
- Note 4:** Interaction with local residents and landowners will be carried out by the main contractor.
- Note 5:** All lighting requirements within the works area will be the responsibility of the main contractor.

Table 2.2.2.1: Minimum Design Parameters for Level 2(i) Roads Single Carriageway 80km/h

Design Parameter	Type A > 12 hours	Type B < 12 hours	Type C < 15 mins
Advance Warning Signage			
Sign Size (mm)	600	600	-
Sign Visibility (m)	90	90	90
Number of Signs	4	3	-
Cumulative Distance (m)	480	360	-
Distance between advance warning signs (m)	120	120	-
Taper			
Lane Taper Rate ^A	1 in 40	1 in 40	-
Hard Shoulder Taper Rate ^A	-	-	-
Cones			
Cone Height (mm)	750	750	-
Taper Spacing (m) ^B	3	3	-
Longitudinal Spacing (m) ^B	12	12	-
Lamps (unlit areas only)			
Taper Spacing (m)	6	6	-
Longitudinal Spacing (m)	24	24	-
Safety Zones			
Longitudinal (m)	45	45	-
Lateral (m)	1.2	1.2	-
Lanes			
Lane Width (m) ^C	3	3	-

- Notes:**
- A. 45° taper is required at shuttle traffic controlled layouts with cones at 1m centres
 - B. Cone spacing is the maximum permitted. Where geometry or any other site-specific reason dictates the spacing shall be reduced accordingly.
 - C. The optimum lane width for all classes of vehicles is 3.3m. This may be reduced to a minimum of 3m. Below this, HGVs and buses must be marshalled past the works. The absolute minimum lane width, if only cars and light vehicles are present, is 2.5m. See Section 0.4.3.4.