

Design Parameters	Roadworks Type A (Full-Time)	Roadworks Type B (Part-Time)	Roadworks Type C (Short Duration)
Speed Limit	50 or 60 km/h		50 or 60 km/h
Temporary Signs			
Sign Visibility (m)	50		
Number of Signs	3	2	
Cumulative Distance (m)	75		50
Distance between advance signs (m)	25		25
Minimum Rate of Taper			
Taper at Lane (m)	1 in 15		1 in 5
Taper at Hard Shoulder (m)	1 in 10		1 in 5
Maximum Lamp Spacing			
At Taper (m)	6		6
Longitudinal (m)	12		12
Maximum Cone Spacing			
At Tapers (m)	3		3
Longitudinal (m)	6		6
Cone Height (mm)	750		750
Safety Zone			
Longitudinal (m)	25		5
Lateral (m)	0.5		0.5
Minimum Lane Width			
Min Lane Width (m)	3.0		3.0
Design Parameters	Roadworks Type A (Full-Time)	Roadworks Type B (Part-Time)	Roadworks Type C (Short Duration)
Speed Limit	80 km/h or 100 km/h		80 km/h or 100 km/h
Temporary Signs			
Sign Visibility (m)	120		120
Number of Signs	4		3
Cumulative Distance (m)	800		600
Distance between advance signs (m)	200		200
Minimum Rate of Taper			
Taper at Lane (m)	1 in 55		1 in 40
Taper at Hard Shoulder (m)	1 in 30		1 in 20
Maximum Lamp Spacing			
At Taper (m)	6		6
Longitudinal (m)	12		12
Maximum Cone Spacing			
At Tapers (m)	3		3
Longitudinal (m)	12		12
Cone Height (mm)	750		750
Safety Zone			
Longitudinal (m)	60		45
Lateral (m)	1.2		1.2
Minimum Lane Width			
Min Lane Width (m)	3.0		3.0

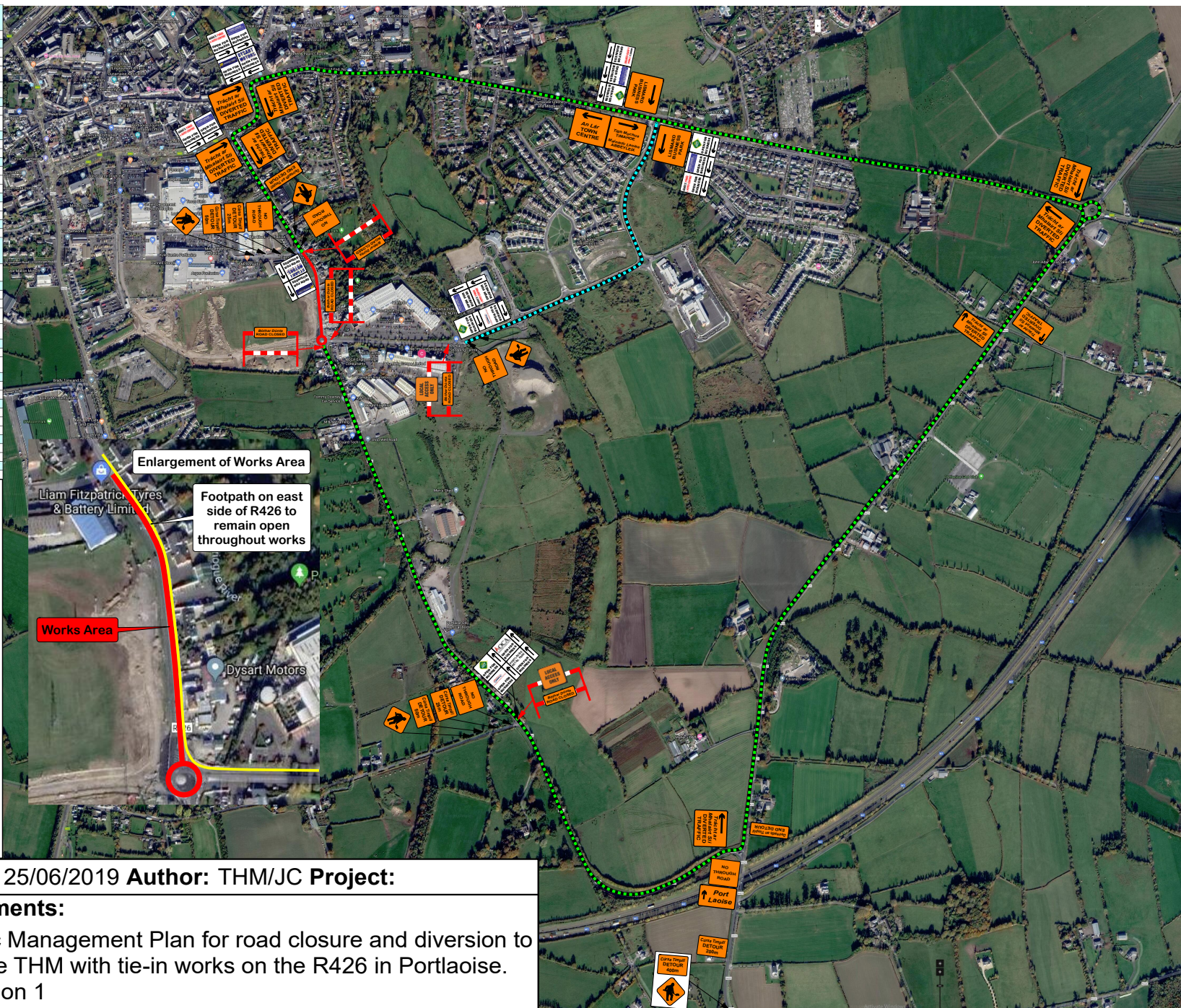
**Note 1:**  
Written dimensions are preferred, do not scale dimensions.  
All dimensions to be checked before work commences and any discrepancies reported.  
All traffic Management to be carried out in accordance with Chapter 8 of the Traffic Signs Manual in force at time of construction.

**Note 2:**  
All signage to be erected outside visibility plays at junctions and site access.

**Note 3:**  
Traffic Management will be audited and monitored in order to ensure safety and adequate traffic manoeuvrability. Should changes be required, drawings will be revised accordingly.

**Note 4:**  
Interaction with local residents and landowners will be carried out by the main contractor.

**Note 5:**  
All lighting requirements within the works area will be the responsibility of the main contractor.



**Date:** 25/06/2019 **Author:** THM/JC **Project:**

**Comments:**

Traffic Management Plan for road closure and diversion to enable THM with tie-in works on the R426 in Portlaoise.  
Revision 1

