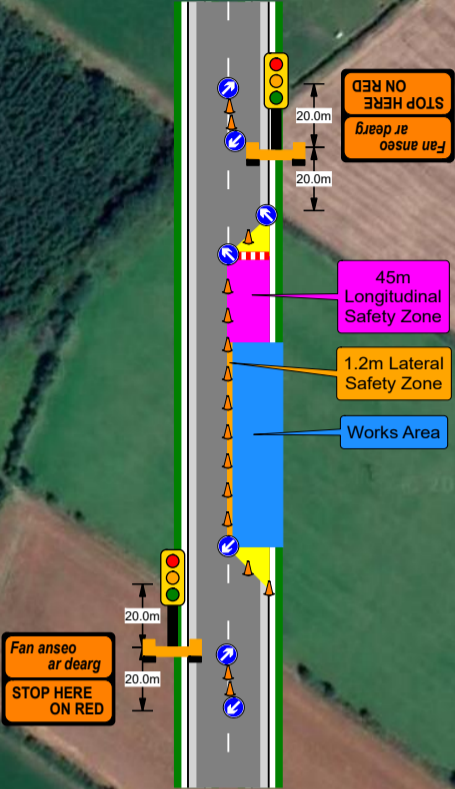


If flagmen are used instead of traffic lights, replace all signage WK060 with WK061



Manifest	
23 x	Cone
5 x	RUS 001 Keep Left
5 x	WK 001 Roadworks Ahead
5 x	WK 060 Temporary Traffic Signals
4 x	WK 095 Stop Here on Red
3 x	P 003L Direction
3 x	P 003R Direction
3 x	RUS014 No Overtaking
2 x	P 010 End
2 x	Portable lane control
2 x	RUS 002 Keep Right
1 x	W 185 Barrier Board

**Works Area Detail**



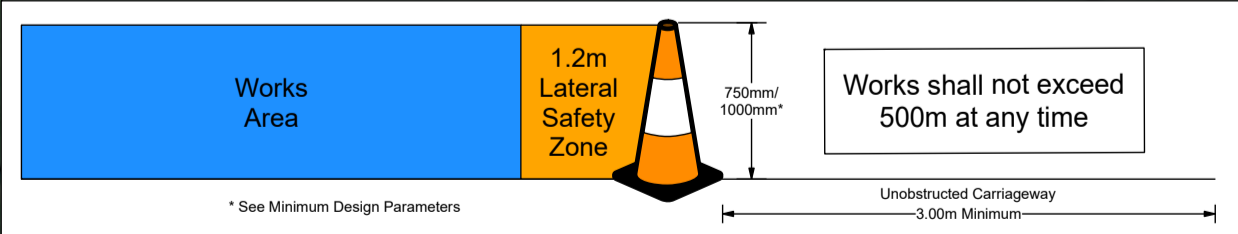
52.977430, -7.290634

Legend	
	Cone
	Lat. Safety Zone
	Long. Safety Zone
	Taper
	Works Area

Table 2.2.2.1: Minimum Design Parameters for Level 2(i) Roads Single Carriageway 80km/h

Design Parameter	Type A > 12 hours	Type B < 12 hours	Type C < 15 mins
<b>Advance Warning Signage</b>			
Sign Size (mm)	600	600	-
Sign Visibility (m)	90	90	90
Number of Signs	4	3	-
Cumulative Distance (m)	480	360	-
Distance between advance warning signs (m)	120	120	-
<b>Taper</b>			
Lane Taper Rate <sup>A</sup>	1 in 40	1 in 40	-
Hard Shoulder Taper Rate <sup>A</sup>	-	-	-
<b>Cones</b>			
Cone Height (mm)	750	750	-
Taper Spacing (m) <sup>B</sup>	3	3	-
Longitudinal Spacing (m) <sup>B</sup>	12	12	-
<b>Lamps (unlit areas only)</b>			
Taper Spacing (m)	6	6	-
Longitudinal Spacing (m)	24	24	-
<b>Safety Zones</b>			
Longitudinal (m)	45	45	-
Lateral (m)	1.2	1.2	-
<b>Lanes</b>			
Lane Width (m) <sup>C</sup>	3	3	-

**Notes:**  
 A. 45° taper is required at shuttle traffic controlled layouts with cones at 1m centres  
 B. Cone spacing is the maximum permitted. Where geometry or any other site-specific reason dictates the spacing shall be reduced accordingly.  
 C. The optimum lane width for all classes of vehicles is 3.3m. This may be reduced to a minimum of 3m. Below this, HGVs and buses must be marshalled past the works. The absolute minimum lane width, if only cars and light vehicles are present, is 2.5m. See Section 0.4.3.4.



**Date:** 16/01/2024 **Author:** THM/JC **Project:** THM  
**Comments:**  
 Traffic Management Plan to enable THM with works on the R425 at Cashel Cross in Co. Laois.