



**Date:** 19/10/2022 **Author:** THM/JC **Project:** THM5762

**Comments:**

Traffic Management Plan to enable THM with works at Newpark in Portlaoise, Co. Laois.  
Phase 1

Table 1.1.1.1: Minimum Design Parameters for Level 1(i) Roads ≤ 30km/h

Design Parameter	Type A > 12 hours	Type B < 12 hours	Type C < 15 mins
<b>Advance Warning Signage</b>			
Sign Size (mm)	450	450	-
Sign Visibility (m)	25	25	25
Number of Signs	2	1	-
Cumulative Distance (m)	20	10	-
Distance between Advance Warning Signs (m)	10	10	-
<b>Taper</b>			
Lane Taper Rate	1 in 1	1 in 1	-
Hard Shoulder Taper Rate			-
<b>Cones</b>			
Cone Height (mm)	750	750	-
Taper Spacing (m) <sup>A</sup>	1	1	-
Longitudinal Spacing (m) <sup>A</sup>	3	3	-
<b>Lamps (unlit areas only)</b>			
Taper Spacing (m)	3	3	-
Longitudinal Spacing (m)	6	6	-
<b>Safety Zones</b>			
Longitudinal (m)	0.5	0.5	-
Lateral (m)	0.5	0.5	-
<b>Lanes</b>			
Lane Width (m) <sup>B</sup>	2.5	2.5	-
Two-way Roadway Width (m)	5	5	-

**Notes:**  
 A. Cone spacing is the maximum permitted. Where geometry or any other site-specific reason dictates, the spacing shall be reduced accordingly.  
 B. The optimum lane width for all classes of vehicles is 3.3m. This may be reduced to a minimum of 3m. Below this, HGVs and buses must be marshalled past the works. The absolute minimum lane width, if only cars and light vehicles are present, is 2.5m. See Section 0.4.3.4.

**Note 1:**  
 Written dimensions are preferred, do not scale dimensions.  
 All dimensions to be checked before work commences and any discrepancies reported.  
 All traffic Management to be carried out in accordance with Chapter 8 of the Traffic Signs Manual in force at time of construction.

**Note 2:**  
 All signage to be erected outside visibility splays at junctions and site access.

**Note 3:**  
 Traffic Management will be audited and monitored in order to ensure safety and adequate traffic maneuverability. Should changes be required, drawings will be revised accordingly.

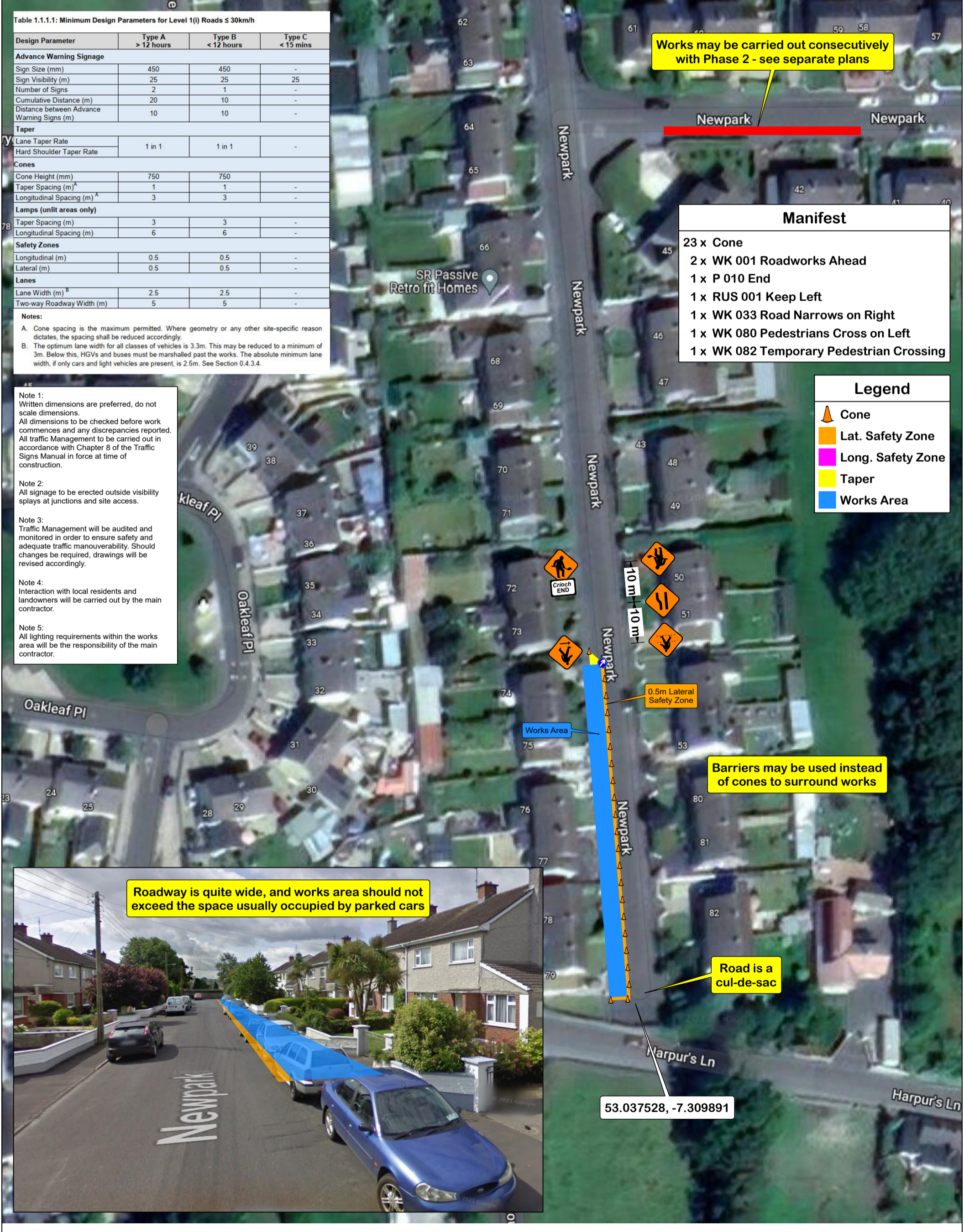
**Note 4:**  
 Interaction with local residents and landowners will be carried out by the main contractor.

**Note 5:**  
 All lighting requirements within the works area will be the responsibility of the main contractor.

Works may be carried out consecutively with Phase 2 - see separate plans

Manifest
23 x Cone
2 x WK 001 Roadworks Ahead
1 x P 010 End
1 x RUS 001 Keep Left
1 x WK 033 Road Narrows on Right
1 x WK 080 Pedestrians Cross on Left
1 x WK 082 Temporary Pedestrian Crossing

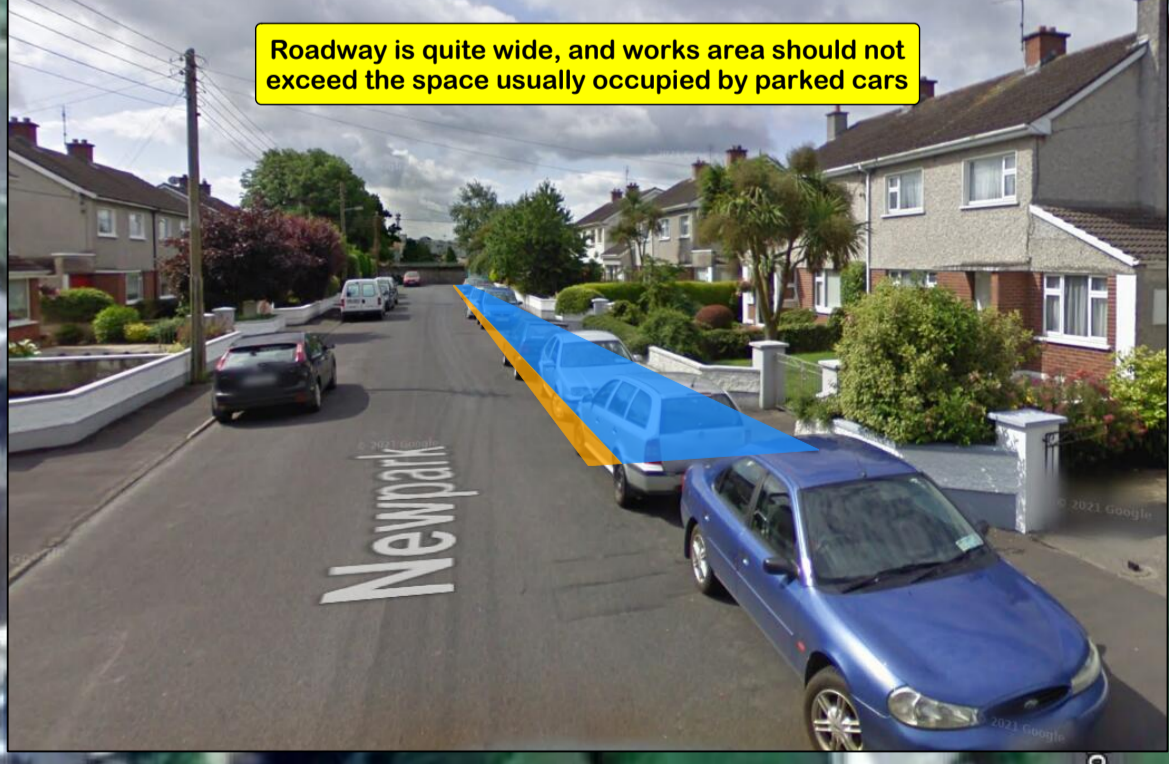
Legend
Cone
Lat. Safety Zone
Long. Safety Zone
Taper
Works Area



Barriers may be used instead of cones to surround works

Road is a cul-de-sac

Roadway is quite wide, and works area should not exceed the space usually occupied by parked cars



53.037528, -7.309891