



**Date:** 18/03/2021 **Author:** THM/JC **Project:** TM1434

**Comments:**

Traffic Management Plan to enable Robbie Coogan with works on the N80 near Mountmellick in Co. Laois.

Table 2.2.2.1: Minimum Design Parameters for Level 2(i) Roads Single Carriageway 80km/h

Design Parameter	Type A > 12 hours	Type B < 12 hours	Type C < 15 mins
<b>Advance Warning Signage</b>			
Sign Size (mm)	600	600	-
Sign Visibility (m)	90	90	90
Number of Signs	4	3	-
Cumulative Distance (m)	480	360	-
Distance between advance warning signs (m)	120	120	-
<b>Taper</b>			
Lane Taper Rate <sup>A</sup>	1 in 40	1 in 40	-
Hard Shoulder Taper Rate <sup>A</sup>	-	-	-
<b>Cones</b>			
Cone Height (mm)	750	750	-
Taper Spacing (m) <sup>B</sup>	3	3	-
Longitudinal Spacing (m) <sup>B</sup>	12	12	-
<b>Lamps (unlit areas only)</b>			
Taper Spacing (m)	6	6	-
Longitudinal Spacing (m)	24	24	-
<b>Safety Zones</b>			
Longitudinal (m)	45	45	-
Lateral (m)	1.2	1.2	-
<b>Lanes</b>			
Lane Width (m) <sup>C</sup>	3	3	-

**Notes:**

- A. 45° taper is required at shuttle traffic controlled layouts with cones at 1m centres
- B. Cone spacing is the maximum permitted. Where geometry or any other site-specific reason dictates the spacing shall be reduced accordingly.
- C. The optimum lane width for all classes of vehicles is 3.3m. This may be reduced to a minimum of 3m. Below this, HGVs and buses must be marshalled past the works. The absolute minimum lane width, if only cars and light vehicles are present, is 2.5m. See Section 0.4.3.4.

Table 2.2.2.2: Minimum Design Parameters for Level 2(ii) Roads Single Carriageway 100km/h

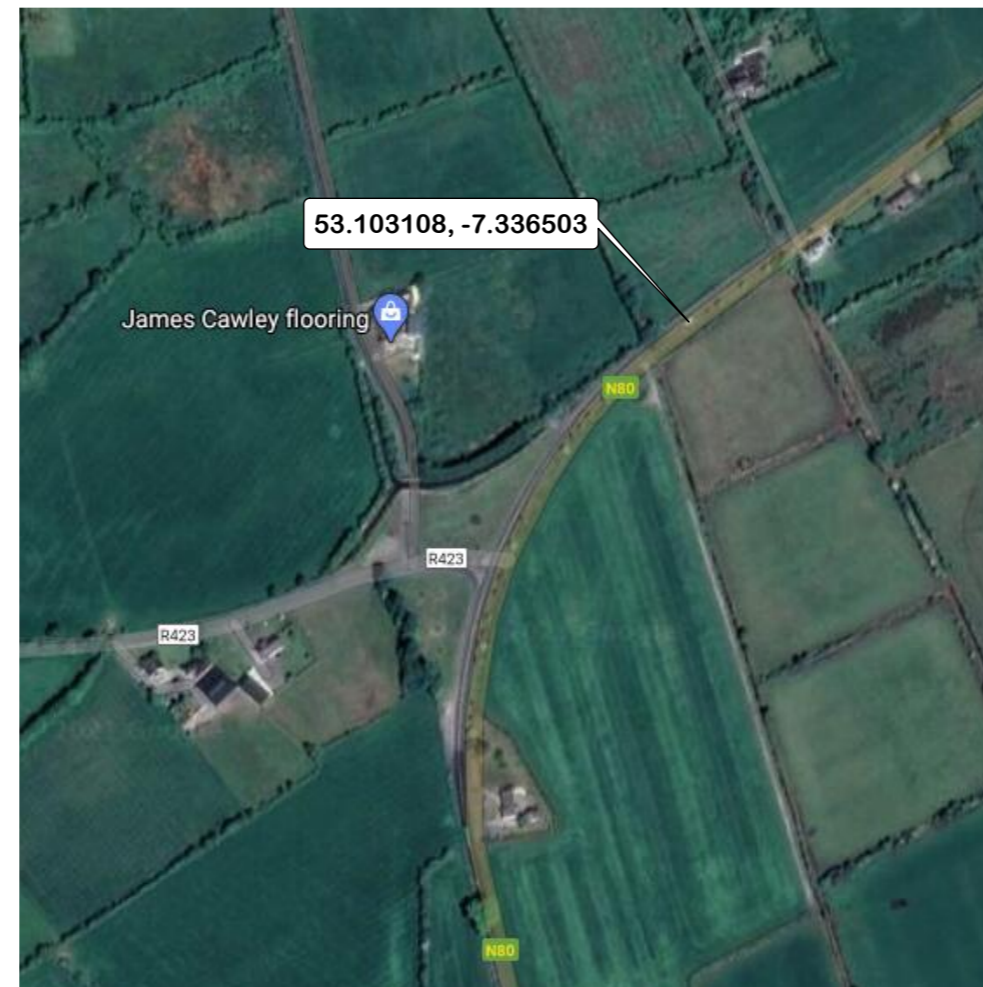
Design Parameter	Type A > 12 hours	Type B < 12 hours	Type C < 15 mins
<b>Advance Warning Signage</b>			
Sign Size (mm)	750	750	-
Sign Visibility (m)	120	120	120
Number of Signs	4	3	-
Cumulative Distance (m)	800	600	-
Distance between advance warning signs (m)	200	200	-
<b>Taper</b>			
Lane Taper Rate <sup>A</sup>	1 in 60	1 in 60	-
Hard Shoulder Taper Rate <sup>A</sup>	1 in 30	1 in 30	-
<b>Cones</b>			
Cone Height (mm)	1,000	1,000	-
Taper Spacing (m) <sup>B</sup>	3	3	-
Longitudinal Spacing (m) <sup>B</sup>	12	12	-
<b>Lamps (unlit areas only)</b>			
Taper Spacing (m)	6	6	-
Longitudinal Spacing (m)	24	24	-
<b>Safety Zones</b>			
Longitudinal (m)	60	60	-
Lateral (m)	1.2	1.2	-
<b>Lanes</b>			
Lane Width (m) <sup>C</sup>	3	3	-

**Notes:**

- A. 45° taper is required at shuttle traffic controlled layouts with cones at 1m centres
- B. Cone spacing is the maximum permitted. Where geometry or any other site-specific reason dictates the spacing shall be reduced accordingly.
- C. The optimum lane width for all classes of vehicles is 3.3m. This may be reduced to a minimum of 3m. Below this, HGVs and buses must be marshalled past the works. The absolute minimum lane width, if only cars and light vehicles are present, is 2.5m. See Section 0.4.3.4.

Manifest
23 x Cone
6 x WK 061 Flagman Ahead
5 x WK 001 Roadworks Ahead
4 x RUS 001 Keep Left
3 x P 003L Direction
2 x P 010 End
2 x RUS 002 Keep Right
2 x RUS 060 Stop and Go Disk - STOP
2 x RUS 061 Stop and Go Disk - GO
2 x WK 095 Stop Here on Red
1 x W 185 Barrier Board

Legend
Cone
Lat. Safety Zone
Long. Safety Zone
Taper
Works Area



NB. RUS014 No Overtaking signs not required as overtaking is already prohibited at works location

