

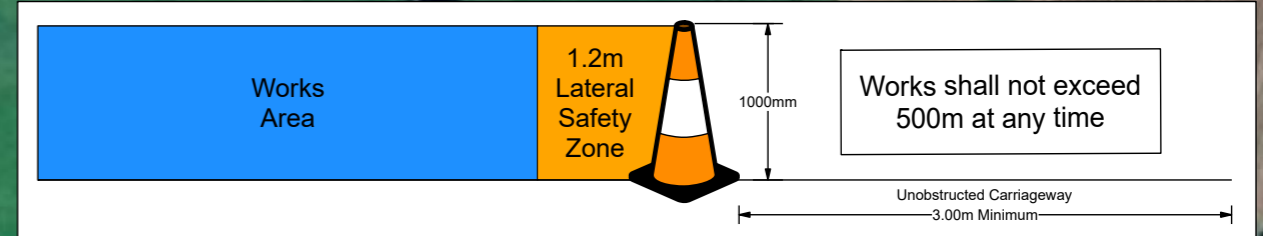
**Legend**

-  Cone
-  Lat. Safety Zone
-  Long. Safety Zone
-  Taper
-  Works Area



**Date:** 06/11/2023 **Author:** THM/JC **Project:** THM

**Comments:**  
Traffic Management Plan to enable THM with works on the N80 near Grange Upper in Co. Laois.



**Manifest**

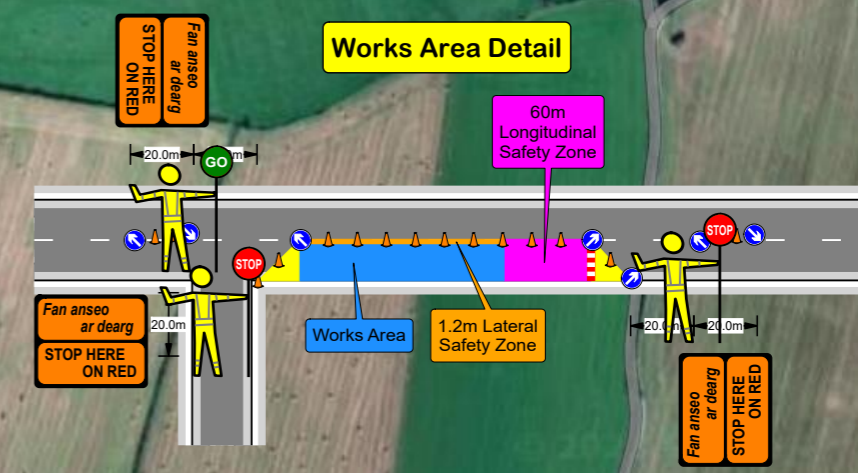
- 23 x Cone
- 8 x WK 001 Roadworks Ahead
- 8 x WK 061 Flagman Ahead
- 5 x RUS 001 Keep Left
- 4 x P 003L Direction
- 4 x WK 095 Stop Here on Red
- 3 x P 010 End
- 3 x RUS 060 Stop and Go Disk - STOP
- 3 x RUS 061 Stop and Go Disk - GO
- 2 x RUS 002 Keep Right
- 1 x W 185 Barrier Board

Table 2.2.2.1: Minimum Design Parameters for Level 2(i) Roads Single Carriageway 80km/h      Table 2.2.2.2: Minimum Design Parameters for Level 2(ii) Roads Single Carriageway 100km/h

Design Parameter	Type A > 12 hours	Type B < 12 hours	Type C < 15 mins	Design Parameter	Type A > 12 hours	Type B < 12 hours	Type C < 15 mins
<b>Advance Warning Signage</b>				<b>Advance Warning Signage</b>			
Sign Size (mm)	600	600	-	Sign Size (mm)	750	750	-
Sign Visibility (m)	90	90	90	Sign Visibility (m)	120	120	120
Number of Signs	4	3	-	Number of Signs	4	3	-
Cumulative Distance (m)	480	360	-	Cumulative Distance (m)	800	600	-
Distance between advance warning signs (m)	120	120	-	Distance between advance warning signs (m)	200	200	-
<b>Taper</b>				<b>Taper</b>			
Lane Taper Rate <sup>A</sup>	1 in 40	1 in 40	-	Lane Taper Rate <sup>A</sup>	1 in 60	1 in 60	-
Hard Shoulder Taper Rate <sup>A</sup>	1 in 40	1 in 40	-	Hard Shoulder Taper Rate <sup>A</sup>	1 in 30	1 in 30	-
<b>Cones</b>				<b>Cones</b>			
Cone Height (mm)	750	750	-	Cone Height (mm)	1,000	1,000	-
Taper Spacing (m) <sup>B</sup>	3	3	-	Taper Spacing (m) <sup>B</sup>	3	3	-
Longitudinal Spacing (m) <sup>B</sup>	12	12	-	Longitudinal Spacing (m) <sup>B</sup>	12	12	-
<b>Lamps (unlit areas only)</b>				<b>Lamps (unlit areas only)</b>			
Taper Spacing (m)	6	6	-	Taper Spacing (m)	6	6	-
Longitudinal Spacing (m)	24	24	-	Longitudinal Spacing (m)	24	24	-
<b>Safety Zones</b>				<b>Safety Zones</b>			
Longitudinal (m)	45	45	-	Longitudinal (m)	60	60	-
Lateral (m)	1.2	1.2	-	Lateral (m)	1.2	1.2	-
<b>Lanes</b>				<b>Lanes</b>			
Lane Width (m) <sup>C</sup>	3	3	-	Lane Width (m) <sup>C</sup>	3	3	-

**Notes:**  
 A. 45° taper is required at shuttle traffic controlled layouts with cones at 1m centres  
 B. Cone spacing is the maximum permitted. Where geometry or any other site-specific reason dictates the spacing shall be reduced accordingly.  
 C. The optimum lane width for all classes of vehicles is 3.3m. This may be reduced to a minimum of 3m. Below this, HGVs and buses must be marshalled past the works. The absolute minimum lane width, if only cars and light vehicles are present, is 2.5m. See Section 0.4.3.4.

**Works Area Detail**



**Note 1:** Written dimensions are preferred, do not scale dimensions. All dimensions to be checked before work commences and any discrepancies reported. All traffic Management to be carried out in accordance with Chapter 8 of the Traffic Signs Manual in force at time of construction.

**Note 2:** All signage to be erected outside visibility splays at junctions and site access.

**Note 3:** Traffic Management will be audited and monitored in order to ensure safety and adequate traffic manoeuvrability. Should changes be required, drawings will be revised accordingly.

**Note 4:** Interaction with local residents and landowners will be carried out by the main contractor.

**Note 5:** All lighting requirements within the works area will be the responsibility of the main contractor.