



Date: 19/03/2024 **Author:** THM/JC **Project:** THM5961

Comments:
Traffic Management Plan to enable THM with works on the N77 at Abbeyleix in Co. Laois.

Legend	
	Cone
	Lat. Safety Zone
	Long. Safety Zone
	Taper
	Works Area

Manifest	
22 x	Cone
7 x	RUS 001 Keep Left
6 x	WK 001 Roadworks Ahead
3 x	P 010 End
3 x	RUS 060 Stop and Go Disk - STOP
3 x	RUS 061 Stop and Go Disk - GO
3 x	WK 061 Flagman Ahead
3 x	WK 095 Stop Here on Red
2 x	RUS 002 Keep Right
1 x	W 185 Barrier Board

Table 1.1.1.1: Minimum Design Parameters for Level 1(i) Roads ≤ 30km/h

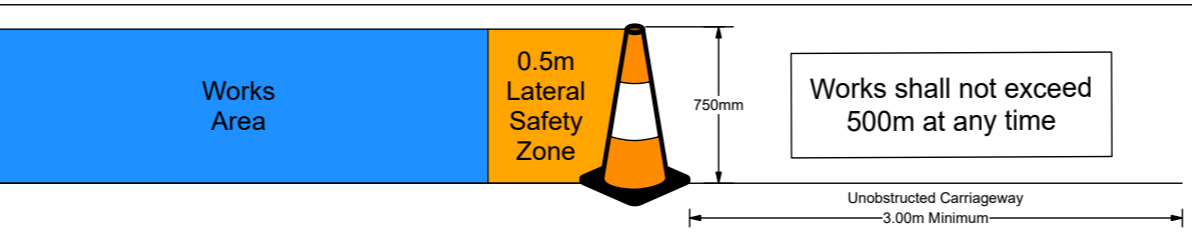
Design Parameter	Type A > 12 hours	Type B < 12 hours	Type C < 15 mins
Advance Warning Signage			
Sign Size (mm)	450	450	-
Sign Visibility (m)	25	25	25
Number of Signs	2	1	-
Cumulative Distance (m)	20	10	-
Distance between Advance Warning Signs (m)	10	10	-
Taper			
Lane Taper Rate	1 in 1	1 in 1	-
Hard Shoulder Taper Rate	-	-	-
Cones			
Cone Height (mm)	750	750	-
Taper Spacing (m) ^A	1	1	-
Longitudinal Spacing (m) ^A	3	3	-
Lamps (unlit areas only)			
Taper Spacing (m)	3	3	-
Longitudinal Spacing (m)	6	6	-
Safety Zones			
Longitudinal (m)	0.5	0.5	-
Lateral (m)	0.5	0.5	-
Lanes			
Lane Width (m) ^B	2.5	2.5	-
Two-way Roadway Width (m)	5	5	-

- Notes:**
- A. Cone spacing is the maximum permitted. Where geometry or any other site-specific reason dictates, the spacing shall be reduced accordingly.
 - B. The optimum lane width for all classes of vehicles is 3.3m. This may be reduced to a minimum of 3m. Below this, HGVs and buses must be marshalled past the works. The absolute minimum lane width, if only cars and light vehicles are present, is 2.5m. See Section 0.4.3.4.

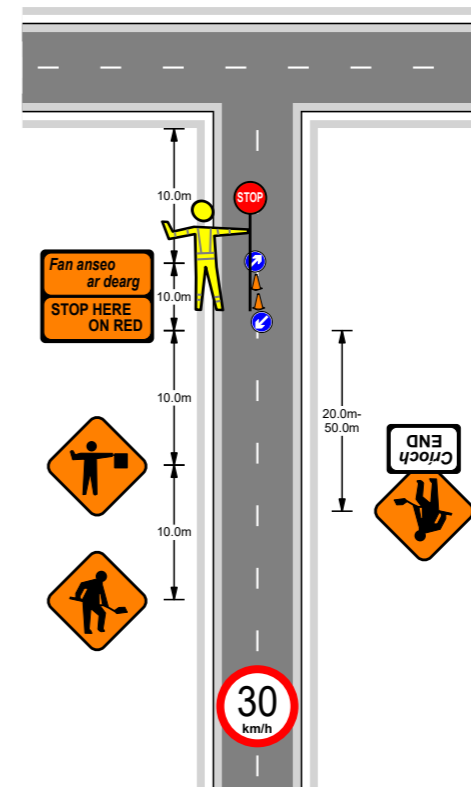
Table 1.1.1.3: Minimum Design Parameters for Level 1(ii) Roads Single Carriageway of 50km/h

Design Parameter	Type A > 12 hours	Type B < 12 hours	Type C < 15 mins
Advance Warning Signage			
Sign Size (mm)	600	600	-
Sign Visibility (m)	50	50	50
Number of Signs	2	2	-
Cumulative Distance (m)	40	40	-
Distance between Advance Warning Signs (m)	20	20	-
Taper			
Lane Taper Rate ^A	1 in 5	1 in 5	-
Hard Shoulder Taper Rate ^A	-	-	-
Cones			
Cone Height (mm)	750	750	-
Taper Spacing (m) ^B	3	3	-
Longitudinal Spacing (m) ^B	3	3	-
Lamps (unlit areas only)			
Taper Spacing (m)	6	6	-
Longitudinal Spacing (m)	6	6	-
Safety Zones			
Longitudinal (m)	5	5	-
Lateral (m)	0.5	0.5	-
Lanes			
Lane Width (m) ^C	3 (2.5)	3 (2.5)	-
Two-way Roadway Width (m)	5	5	-

- Notes:**
- A. 45° taper is required at shuttle controlled layouts with cones at 1m centres
 - B. Cone spacing is the maximum permitted. Where geometry or any other site-specific reason dictates the spacing shall be reduced accordingly.
 - C. The optimum lane width for all classes of vehicles is 3.3m. This may be reduced to a minimum of 3m. Below this, HGVs and buses must be marshalled past the works. The absolute minimum lane width, if only cars and light vehicles are present, is 2.5m. See Section 0.4.3.4.



Use this signage on De Vesce Hill



Note 1: Written dimensions are preferred, do not scale dimensions. All dimensions to be checked before work commences and any discrepancies reported. All traffic Management to be carried out in accordance with Chapter 8 of the Traffic Signs Manual in force at time of construction.

Note 2: All signage to be erected outside visibility splays at junctions and site access.

Note 3: Traffic Management will be audited and monitored in order to ensure safety and adequate traffic manoeuvrability. Should changes be required, drawings will be revised accordingly.

Note 4: Interaction with local residents and landowners will be carried out by the main contractor.

Note 5: All lighting requirements within the works area will be the responsibility of the main contractor.

