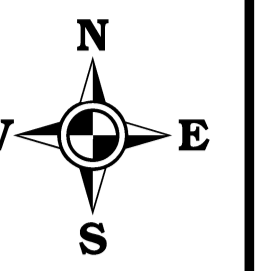
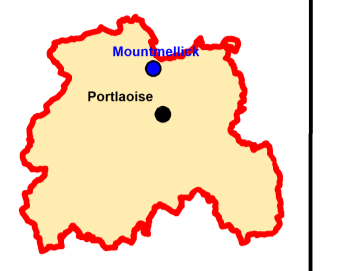
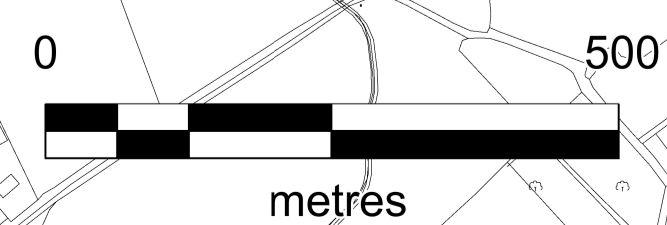
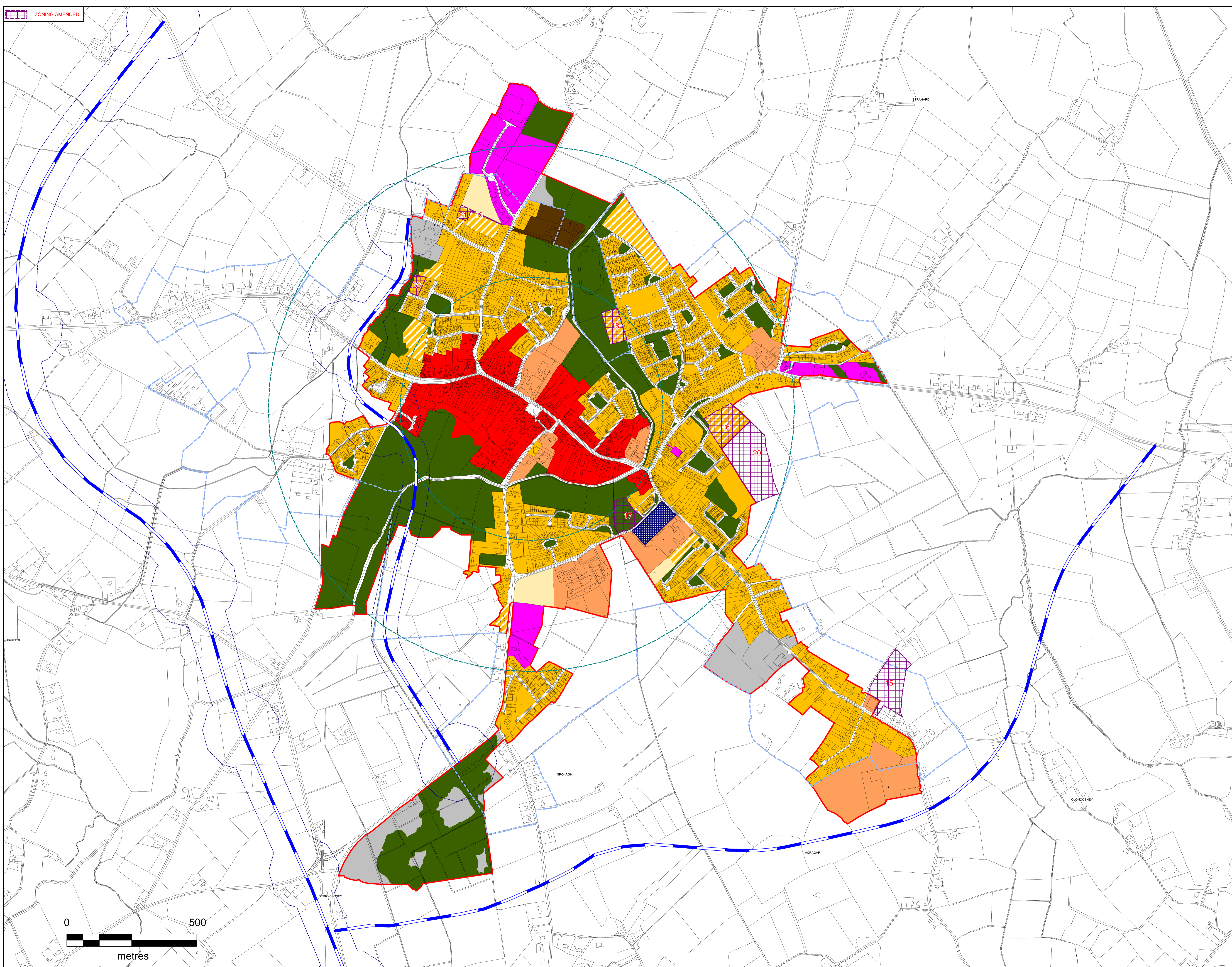


ZONING AMENDED



Legend:

- = Town Centre (Primary / Core Retail Area)
- = Residential 1 - Existing Residential
- = Residential 2 - New Proposed Residential
- = Strategic Reserve 2027-2031
- = Community, Educational & Institutional
- = Open Space & Amenity
- = Industrial & Warehousing
- = General Business
- = Neighbourhood Centre
- = Enterprise & Employment
- = Transport & Utilities
- = Mixed Use
- = Roads Objectives Buffer Zone
- = Roads Objectives
- = Roads Being Approved
- = Development Boundary
- = CSO Settlement Boundary
- = 500m 1km Radius



Refer to Infrastructure Assessment for Tier 1 and Tier 2 Zoning

**MAP 3.2 -  
MOUNTMELICK**

**LAOIS COUNTY COUNCIL  
FORWARD PLANNING SECTION**

|                        |   |                            |
|------------------------|---|----------------------------|
| Drawn:<br>Bryan Scully | Checked:<br>David O'Hara &<br>Cecilia Scanlon | Approved:<br>Angela McEvoy |
|------------------------|---|----------------------------|

PRODUCED BY LAOIS COUNTY COUNCIL'S FORWARD PLANNING SECTION  
UNDER COPYRIGHT AGREEMENT FROM ORDNANCE SURVEY OF IRELAND.  
ALL RIGHTS RESERVED. LICENCE NO. 2021/0900M/LAOIS/COUNTY/COUNCIL