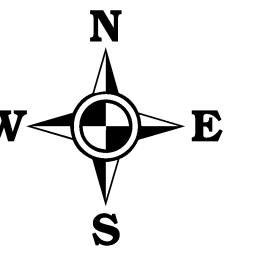
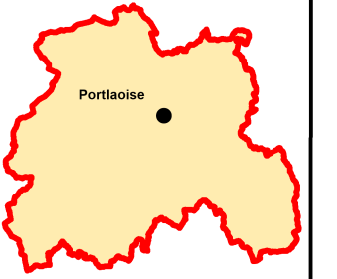
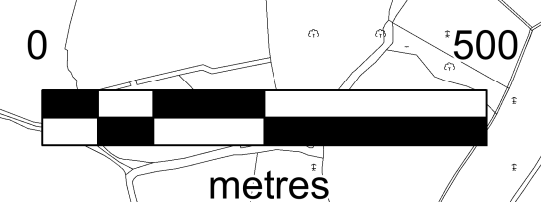
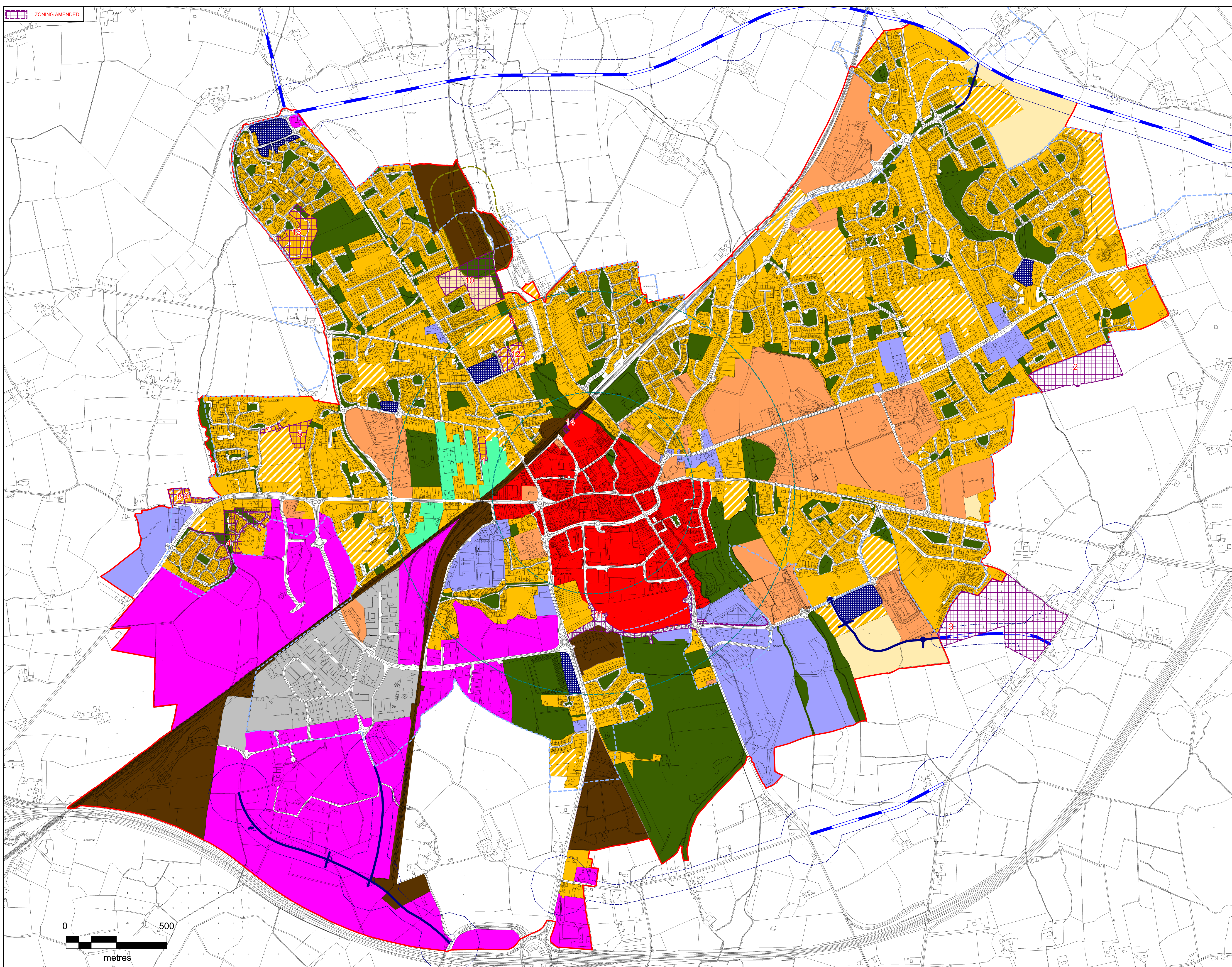


ZONING AMENDED



Legend:

- Town Centre (Primary / Core Retail Area)
- Residential 1 - Existing Residential
- Residential 2 - New Proposed Residential
- Strategic Reserve 2027-2031
- Community, Educational & Institutional
- Open Space & Amenity
- Industrial & Warehousing
- General Business
- Neighbourhood Centre
- Enterprise & Employment
- Transport & Utilities
- Mixed Use
- Roads Objectives Buffer Zone
- Roads Objectives
- Roads Being Approved
- Development Boundary
- CSO Settlement Boundary
- Sewerage Treatment Plant Buffer
- 500m/1km Radius



Refer to Infrastructure Assessment for Tier 1 and Tier 2 Zoning

**MAP 2.2 -
PORTLAOISE**



**LAOIS COUNTY COUNCIL
FORWARD PLANNING SECTION**

| | | |
|------------------------|---|----------------------------|
| Drawn: Bryan Scully | Checked: David O'Hara & Cecilia Scanlon | Approved: Angela McEvoy |
|------------------------|---|----------------------------|

PRODUCED BY LAOIS COUNTY COUNCIL'S FORWARD PLANNING SECTION
UNDER COPYRIGHT AGREEMENT FROM ORDNANCE SURVEY OF IRELAND.
ALL RIGHTS RESERVED. LICENCE NO. 2021/0900M/LAOISCOUNTYCOUNCIL