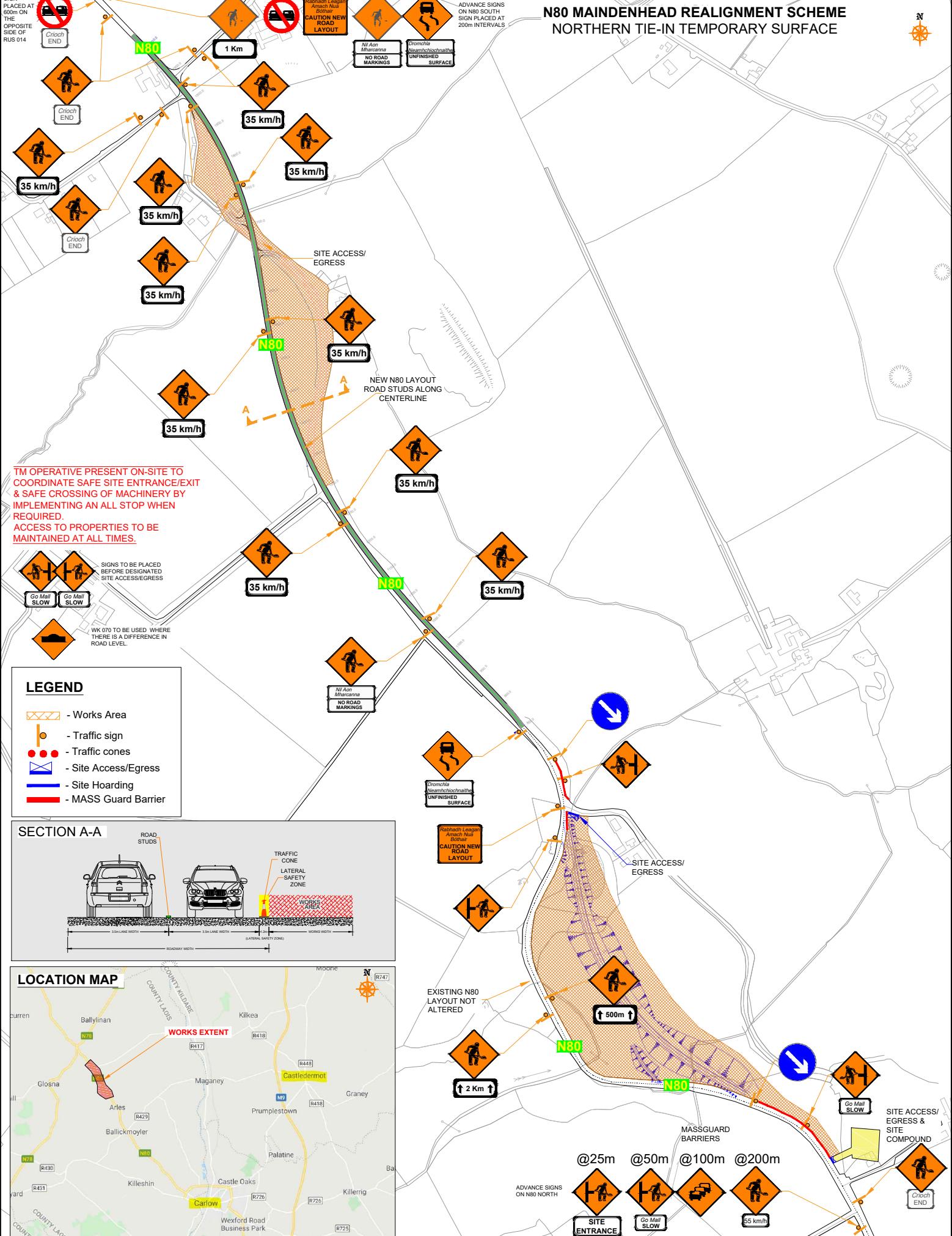


N80 MAIDENHEAD REALIGNMENT SCHEME NORTHERN TIE-IN TEMPORARY SURFACE



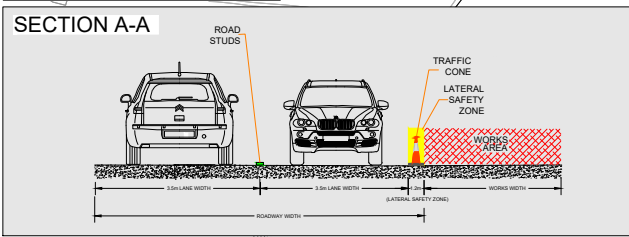
TM OPERATIVE PRESENT ON-SITE TO COORDINATE SAFE SITE ENTRANCE/EXIT & SAFE CROSSING OF MACHINERY BY IMPLEMENTING AN ALL STOP WHEN REQUIRED. ACCESS TO PROPERTIES TO BE MAINTAINED AT ALL TIMES.

Signs to be placed before designated site access/egress

Wk 070 to be used where there is a difference in road level

LEGEND

- Works Area
- Traffic sign
- Traffic cones
- Site Access/Egress
- Site Hoarding
- MASS Guard Barrier



DESIGN PARAMETERS		Rev	Date	Details	Dm	Chk	App	Dm	DS	Project
Speed Limit	100 km/h	01	10/07/20	Remove site access & cone						N80 MAIDENHEAD REALIGNMENT SCHEME CLIENT: CLONMEL ENTERPRISES BUILDING & CIVIL ENGINEERING Title: TRAFFIC MANAGEMENT PLAN NORTHERN TIE-IN TEMPORARY SURFACE Date: 08-07-2020 Scale: A1 NTS, A3 NTS Stage: CONSTRUCTION Drawing No: C19090_00_008 Rev: 1
Road Classification	3									
Roadworks type	A									
Number of advance signs	4									
Sign visibility	120m									
Distance between signs	200m									
Taper at lane	N/A									
Taper at hard shoulder	N/A									
Sign size (diamond)	750mm									
Sign size (circular)	600mm									
Minimum Cone size	750mm									
Cone spacing at tapers	3m									
Cone spacing longitudinal	12m									
Lateral Safety Zone	1.2m									
Longitudinal Safety Zone	60m									
Minimum lane width	3.0m									

ROAD CONTROL

Copyright Notes: This drawing is the property of Road Control Services Ltd. The design information contained herein is strictly confidential. This document is not to be used, reproduced, disclosed or circulated in whole or in part without prior written consent.

CLONMEL ENTERPRISES

BUILDING & CIVIL ENGINEERING