

- Manifest**
- 28 x Pedestrian Tape
  - 20 x Cone
  - 7 x WK 061 Flagman Ahead
  - 6 x RUS 001 Keep Left
  - 6 x WK 001 Roadworks Ahead
  - 3 x Density Technician
  - 3 x P 010 End
  - 3 x RUS 060 Stop and Go Disk - STOP
  - 3 x RUS 061 Stop and Go Disk - GO
  - 3 x WK 095 Stop Here on Red
  - 2 x RUS 002 Keep Right
  - 1 x RUS 043 50km/h Speed Limit

- Legend**
- Cone
  - Pedestrian Tape
  - Residence Access to be Maintained
  - Safety Zone
  - Work Area

**Pedestrians will be controlled by Flagman - All Stop traffic to allow pedestrian go around the works**

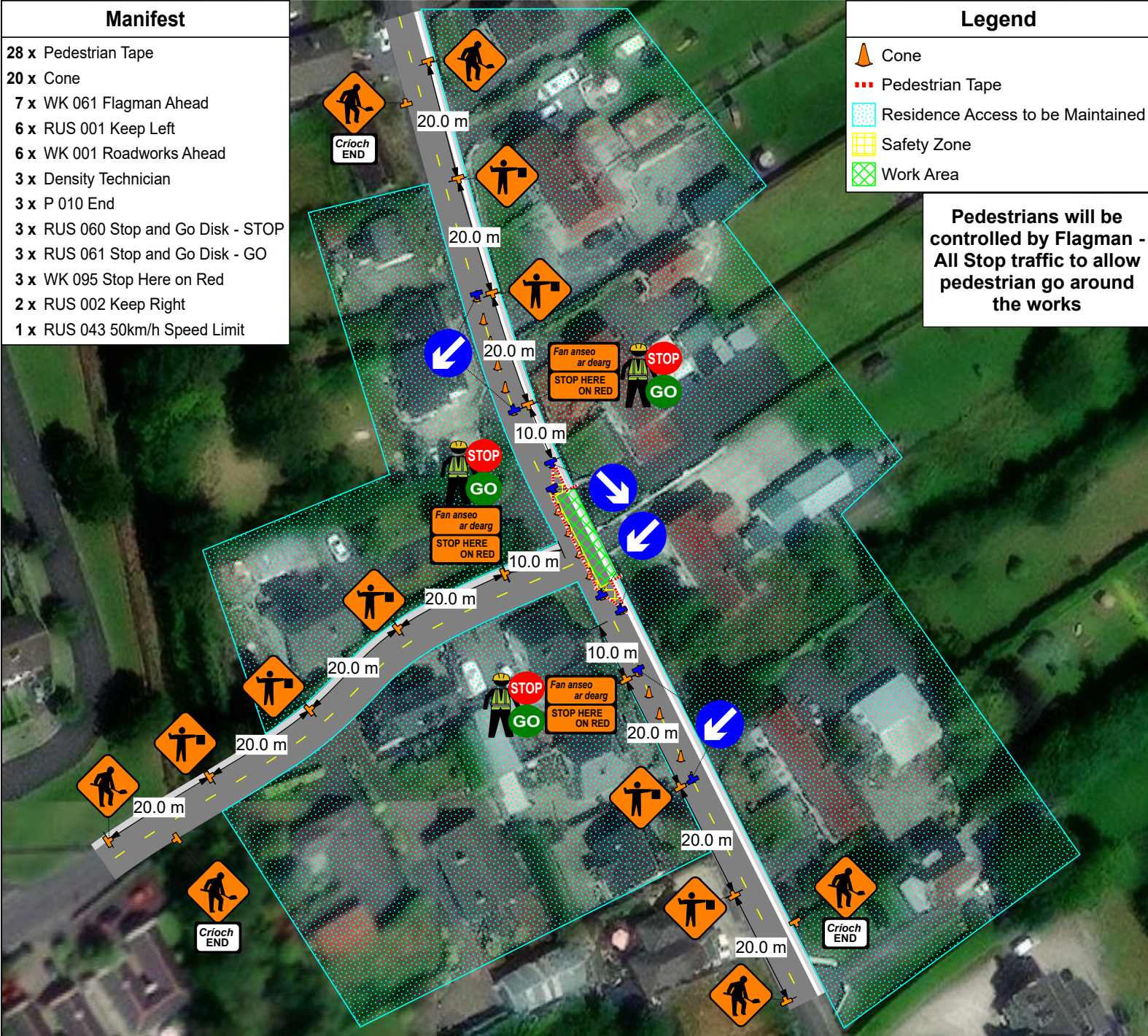


Table 8.2.2.4  
Minimum Design Parameters for Level 1 (III) Roads  
(Single Carriageway of 50km/h)

Design Parameter	Type A > 12 hours	Type B < 12 hours	Type C < 15 mins
<b>Advance Warning Signage</b>			
Sign Size (mm)	600	600	-
Sign Visibility (m)	50	50	50
Number of Signs	2	2	-
Cumulative Distance (m)	40	40	-
Distance between Advance Warning Signs (m)	20	20	-
<b>Taper</b>			
Lane Taper Rate <sup>a</sup>	1 in 5	1 in 5	-
Hard Shoulder Taper Rate <sup>a</sup>	-	-	-
<b>Cones</b>			
Cone Height (mm)	750	750	-
Taper Spacing (m) <sup>a</sup>	3	3	-
Longitudinal Spacing (m) <sup>a</sup>	3	3	-
<b>Lamps (until areas only)</b>			
Taper Spacing (m)	6	6	-
Longitudinal Spacing (m)	6	6	-
<b>Safety Zones</b>			
Longitudinal (m)	5	5	-
Lateral (m)	0.5	0.5	-
<b>Lanes</b>			
Lane Width (m) <sup>c</sup>	3 (2.5)	3 (2.5)	-
Two-way Roadway Width (m)	5	5	-

- Note 1:** Written Dimensions are preferred, do not scale dimensions. All Dimensions to be checked before works commence and any discrepancies reported.  
**All Traffic Management to be in accordance with Chapter 8 of the Traffic Signs Manual in force at the time of construction.**
- Note 2:** All Signage to be erected outside visibility plays at junctions and Site Access.
- Note 3:** Traffic Management will be audited and monitored in order to ensure safety and adequate traffic maneuverability. Should changes be required TTMP will be revised accordingly
- Note 4:** Interaction between local residents and land owners will be carried out by Main Contractor
- Note 5:** All Lighting requirements within the works will be the responsibility of the Main Contractor.

**DATE:**  
06.12.2023

**JOB NUMBER:**  
RRLCCKCE06122023

**PROJECT NUMBER:**  
RRLCCKCE06122023

**AUTHOR:**  
James O'Neill

**LOCATION:**  
Ridge Road, Portlaoise, Co. Laois

Temporary Traffic Management to enable works on Ridge Road

Type of TTM:  
Static - Stop & Go

