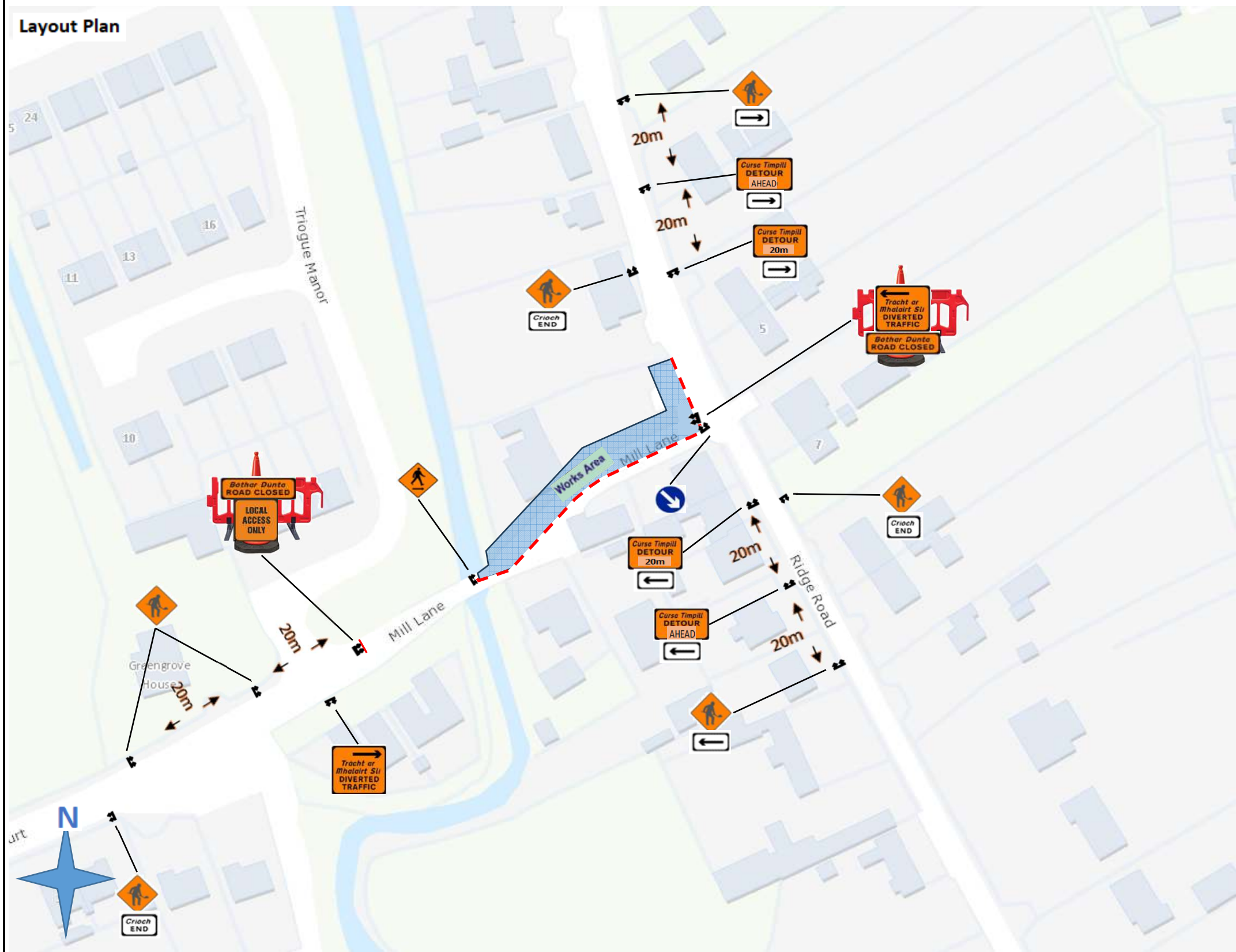


**Layout Plan**



Design Parameter	Type A > 12 hours
<b>Advance Warning Signage</b>	
Sign Size (mm)	600
Sign Visibility (m)	60
Number of Signs	3
Cumulative Distance (m)	60
Distance between Advance Warning Signs (m)	20
<b>Taper</b>	
Lane Taper Rate <sup>A</sup>	1 in 10
Hard Shoulder Taper Rate <sup>A</sup>	
Transition Length (m)	2 x Taper Length
<b>Cones</b>	
Cone Height (mm)	750
Taper Spacing (m) <sup>B</sup>	3
Longitudinal Spacing (m) <sup>B</sup>	6
<b>Lamps (unlit areas only)</b>	
Taper Spacing (m)	6
Longitudinal Spacing (m)	12
<b>Safety Zones</b>	
Longitudinal (m)	15
Lateral (m)	0.5
<b>Lanes</b>	
Lane Width (m) <sup>C</sup>	3 (2.5)
Two-way Roadway Width (m)	5

Other Design Considerations	
Type of System	Diversion
Road Level	1 (iv)
Works Length	50m
Traffic Volume (AADT)	< 5,000 veh/day

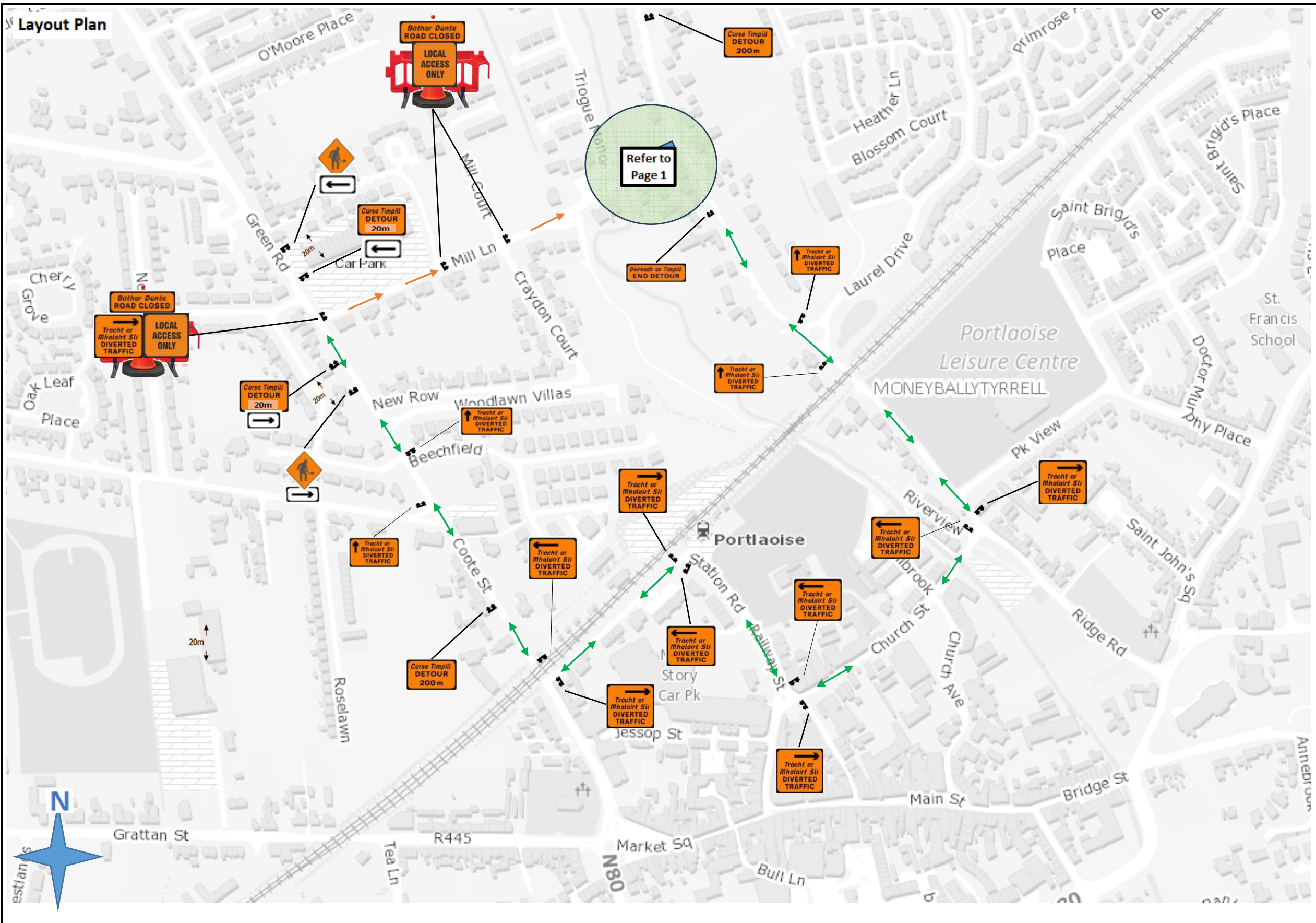
**Type A** – Works requiring full time Temporary Traffic Management (TTM)

Proposed Start Date	28/08/2023
Proposed Completion Date	5 days

Notes:  
Refer to the Page 2 for details of Diversion Routes. Refer to page 3 for detail of Traffic Light Arrangements.

**Dunne Brothers Ltd**  
 "50 years in Plant Hire & Civil Engineering"  
 Civil Engineering | Groundworks | Planthire | Demolitions | Utilities  
 O'Moore Street, Mountmellick, Laois Tel: 057 8624163  
 Email: info@dunnebros.ie

Drawing:	<b>Traffic Management Plan - Diversion</b>
	<b>Page 1 of 2</b>
Project:	<b>Ridge Road, Green Mill Lane Junction</b>
Client:	<b>Laois County Council</b>
Date:	<b>18/08/2023</b> Dwg No. <b>001 P1</b> Rev -



Design Parameter	Type A > 12 hours
<b>Advance Warning Signage</b>	
Sign Size (mm)	600
Sign Visibility (m)	60
Number of Signs	3
Cumulative Distance (m)	60
Distance between Advance Warning Signs (m)	20
<b>Taper</b>	
Lane Taper Rate <sup>A</sup>	1 in 10
Hard Shoulder Taper Rate <sup>A</sup>	
Transition Length (m)	2 x Taper Length
<b>Cones</b>	
Cone Height (mm)	750
Taper Spacing (m) <sup>B</sup>	3
Longitudinal Spacing (m) <sup>B</sup>	6
<b>Lamps (unlit areas only)</b>	
Taper Spacing (m)	6
Longitudinal Spacing (m)	12
<b>Safety Zones</b>	
Longitudinal (m)	15
Lateral (m)	0.5
<b>Lanes</b>	
Lane Width (m) <sup>C</sup>	3 (2.5)
Two-way Roadway Width (m)	5

Other Design Considerations	
Type of System	Diversion
Road Level	1 (iv)
Works Length	50m
Traffic Volume (AADT)	< 5,000 veh/day

**Type A** – Works requiring full time Temporary Traffic Management (TTM)

Proposed Start Date	28/08/2023
Proposed Completion Date	5 days

Notes:  
 Temporary Traffic Diversions to be implemented only during working hours. Traffic Operations to be returned to normal flows during non-working hours (evenings & nights)

**Dunne Brothers Ltd**  
 "50 years in Plant Hire & Civil Engineering"  
 Civil Engineering | Groundworks | Planthire | Demolitions | Utilities  
 O'Moore Street, Mountmellick, Laois Tel: 057 8624163  
 Email: info@dunnebros.ie

Drawing:	Traffic Management Plan - Diversion Page 2 of 2
Project:	Ridge Road, Green Mill Lane Junction
Client:	Laois County Council
Date:	18/08/2023 Dwg No. 001 P1 Rev -