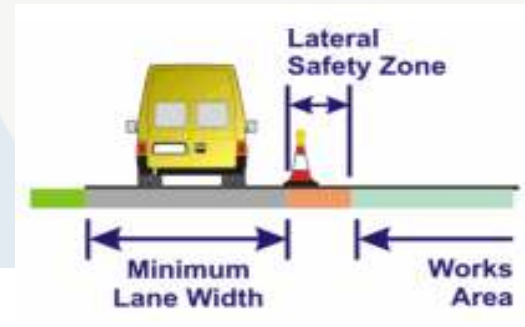
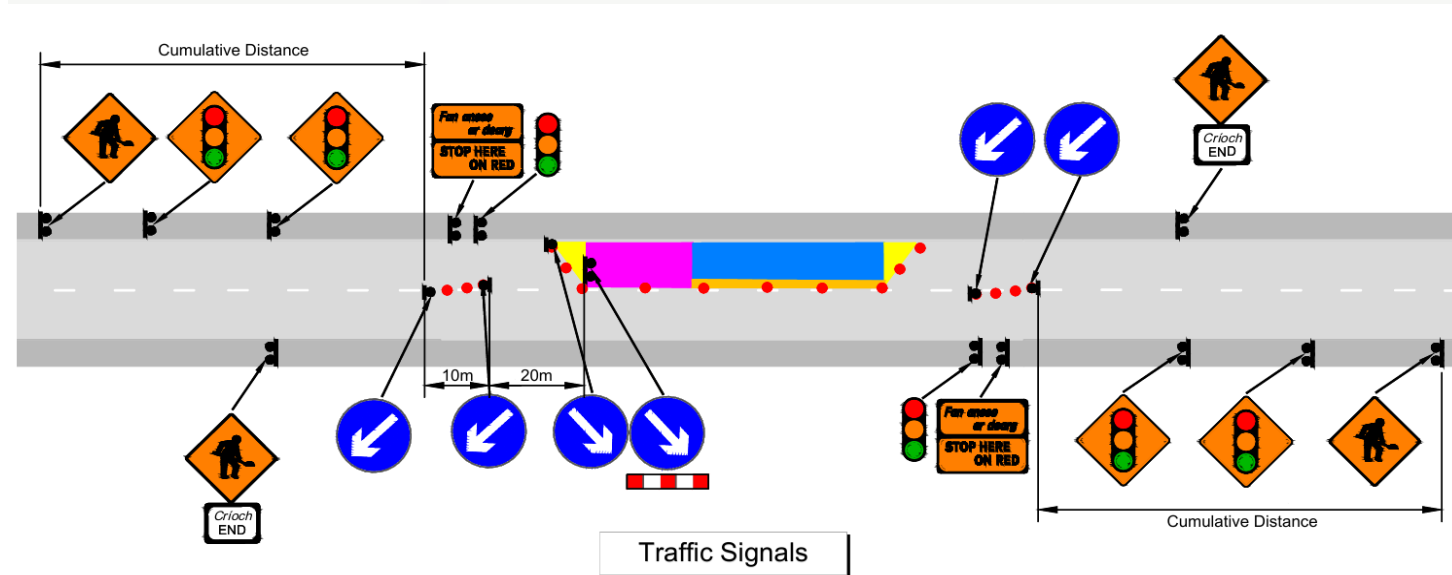
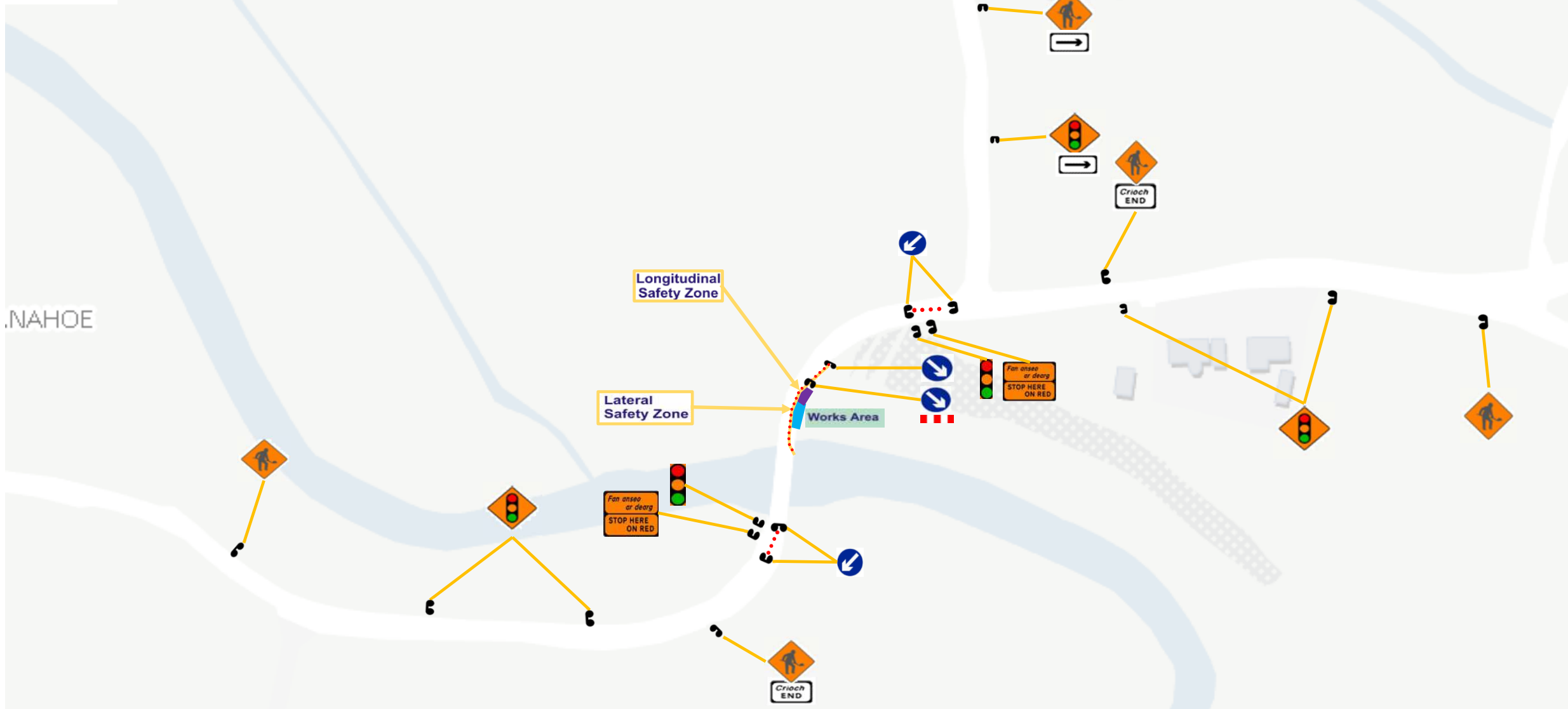


**Layout Plan**



Design Parameter	Type A > 12 hours
<b>Advance Warning Signage</b>	
Sign Size (mm)	600
Sign Visibility (m)	90
Number of Signs	4
Cumulative Distance (m)	480
Distance between Advance Warning Signs (m)	120
<b>Taper</b>	
Lane Taper Rate <sup>A</sup>	1 in 40
Hard Shoulder Taper Rate <sup>A</sup>	
<b>Cones</b>	
Cone Height (mm)	750
Taper Spacing (m) <sup>B</sup>	3
Longitudinal Spacing (m) <sup>B</sup>	12
<b>Lamps (unit areas only)</b>	
Taper Spacing (m)	6
Longitudinal Spacing (m)	24
<b>Safety Zones</b>	
Longitudinal (m)	45
Lateral (m)	1.2
<b>Lanes</b>	
Lane Width (m) <sup>C</sup>	3
<b>Other Design Considerations</b>	
Type of System	Traffic Lights
Road Type	Level 2 (i) 80km
Works Length	<150m
Traffic Volume (AADT)	< 5,000 veh/day

**Type A** – Works requiring full time Temporary Traffic Management (TTM)

Proposed Start Date: 19/04/2024  
 Proposed Completion Date: 1 day

Notes:

**Dunne Brothers Ltd**  
 "50 years in Plant Hire & Civil Engineering"  
 Civil Engineering | Groundworks | Planthire | Demolitions | Utilities  
 O'Moore Street, Mountmellick, Laois Tel: 057 8624163  
 Email: info@dunnebrothers.ie

Drawing: **Traffic Management Plan  
 Traffic Signals at Poormans Bridge (Drainage)**  
 Project: **Portlaoise MD Paths 2023**  
 Client: **Laois County Council**  
 Date: **18/04/2024** Dwg No. **028**