



Date: 22/08/2023 Author: THM/JC Project: THM5918

Comments:

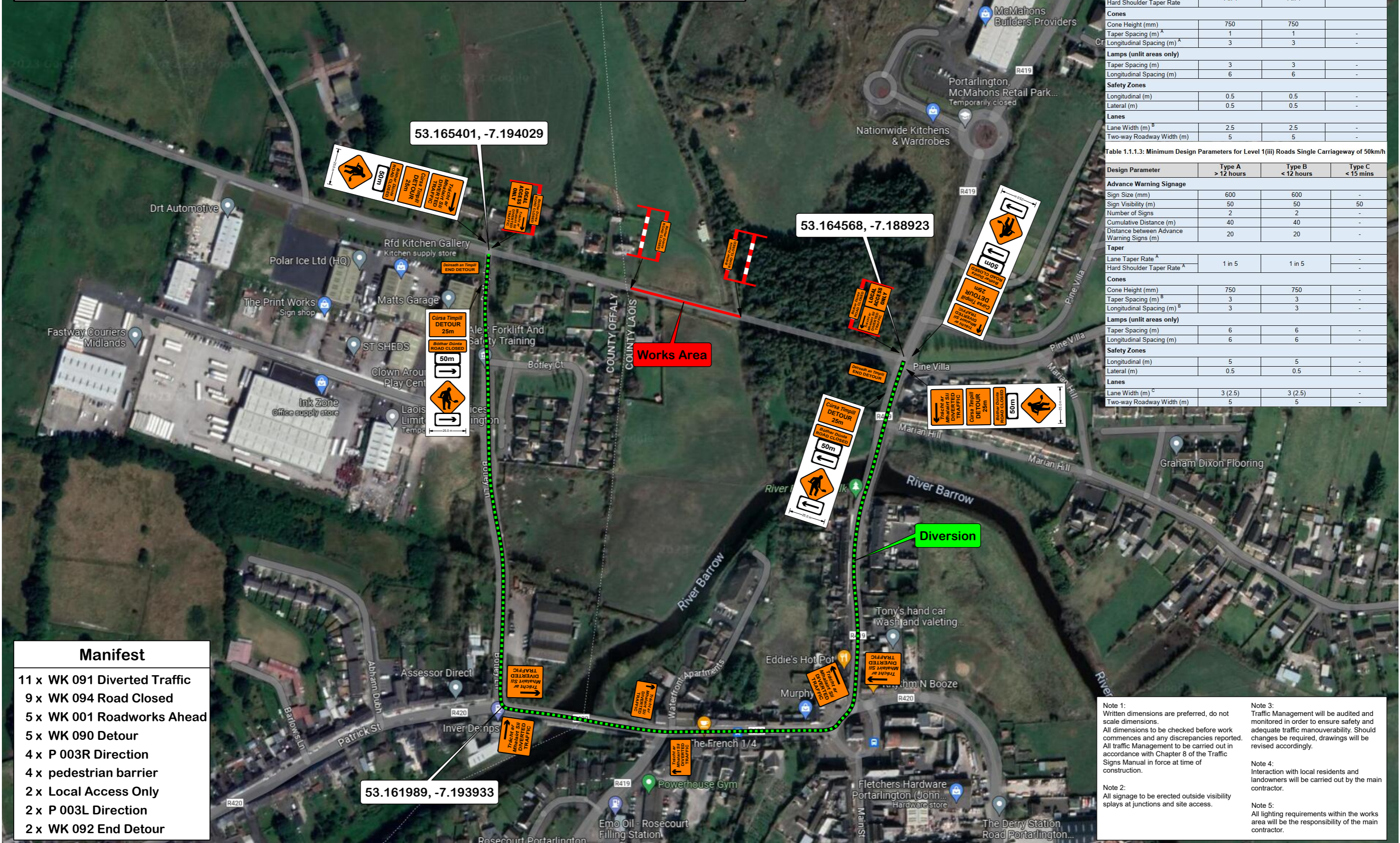
Traffic Management Plan to enable THM with works on the L7178 at Portarlinton in Co. Laois. Closure & Diversion

Table 1.1.1.1: Minimum Design Parameters for Level 1(i) Roads ≤ 30km/h

Design Parameter	Type A > 12 hours	Type B < 12 hours	Type C < 15 mins
Advance Warning Signage			
Sign Size (mm)	450	450	-
Sign Visibility (m)	25	25	25
Number of Signs	2	1	-
Cumulative Distance (m)	20	10	-
Distance between Advance Warning Signs (m)	10	10	-
Taper			
Lane Taper Rate	1 in 1	1 in 1	-
Hard Shoulder Taper Rate	-	-	-
Cones			
Cone Height (mm)	750	750	-
Taper Spacing (m) ^A	1	1	-
Longitudinal Spacing (m) ^A	3	3	-
Lamps (unit areas only)			
Taper Spacing (m)	3	3	-
Longitudinal Spacing (m)	6	6	-
Safety Zones			
Longitudinal (m)	0.5	0.5	-
Lateral (m)	0.5	0.5	-
Lanes			
Lane Width (m) ^B	2.5	2.5	-
Two-way Roadway Width (m)	5	5	-

Table 1.1.1.3: Minimum Design Parameters for Level 1(iii) Roads Single Carriageway of 50km/h

Design Parameter	Type A > 12 hours	Type B < 12 hours	Type C < 15 mins
Advance Warning Signage			
Sign Size (mm)	600	600	-
Sign Visibility (m)	50	50	50
Number of Signs	2	2	-
Cumulative Distance (m)	40	40	-
Distance between Advance Warning Signs (m)	20	20	-
Taper			
Lane Taper Rate ^A	1 in 5	1 in 5	-
Hard Shoulder Taper Rate ^A	-	-	-
Cones			
Cone Height (mm)	750	750	-
Taper Spacing (m) ^B	3	3	-
Longitudinal Spacing (m) ^B	3	3	-
Lamps (unit areas only)			
Taper Spacing (m)	6	6	-
Longitudinal Spacing (m)	6	6	-
Safety Zones			
Longitudinal (m)	5	5	-
Lateral (m)	0.5	0.5	-
Lanes			
Lane Width (m) ^C	3 (2.5)	3 (2.5)	-
Two-way Roadway Width (m)	5	5	-



- Manifest**
- 11 x WK 091 Diverted Traffic
 - 9 x WK 094 Road Closed
 - 5 x WK 001 Roadworks Ahead
 - 5 x WK 090 Detour
 - 4 x P 003R Direction
 - 4 x pedestrian barrier
 - 2 x Local Access Only
 - 2 x P 003L Direction
 - 2 x WK 092 End Detour

- Note 1: Written dimensions are preferred, do not scale dimensions. All dimensions to be checked before work commences and any discrepancies reported. All traffic Management to be carried out in accordance with Chapter 8 of the Traffic Signs Manual in force at time of construction.
- Note 2: All signage to be erected outside visibility plays at junctions and site access.
- Note 3: Traffic Management will be audited and monitored in order to ensure safety and adequate traffic maneuverability. Should changes be required, drawings will be revised accordingly.
- Note 4: Interaction with local residents and landowners will be carried out by the main contractor.
- Note 5: All lighting requirements within the works area will be the responsibility of the main contractor.