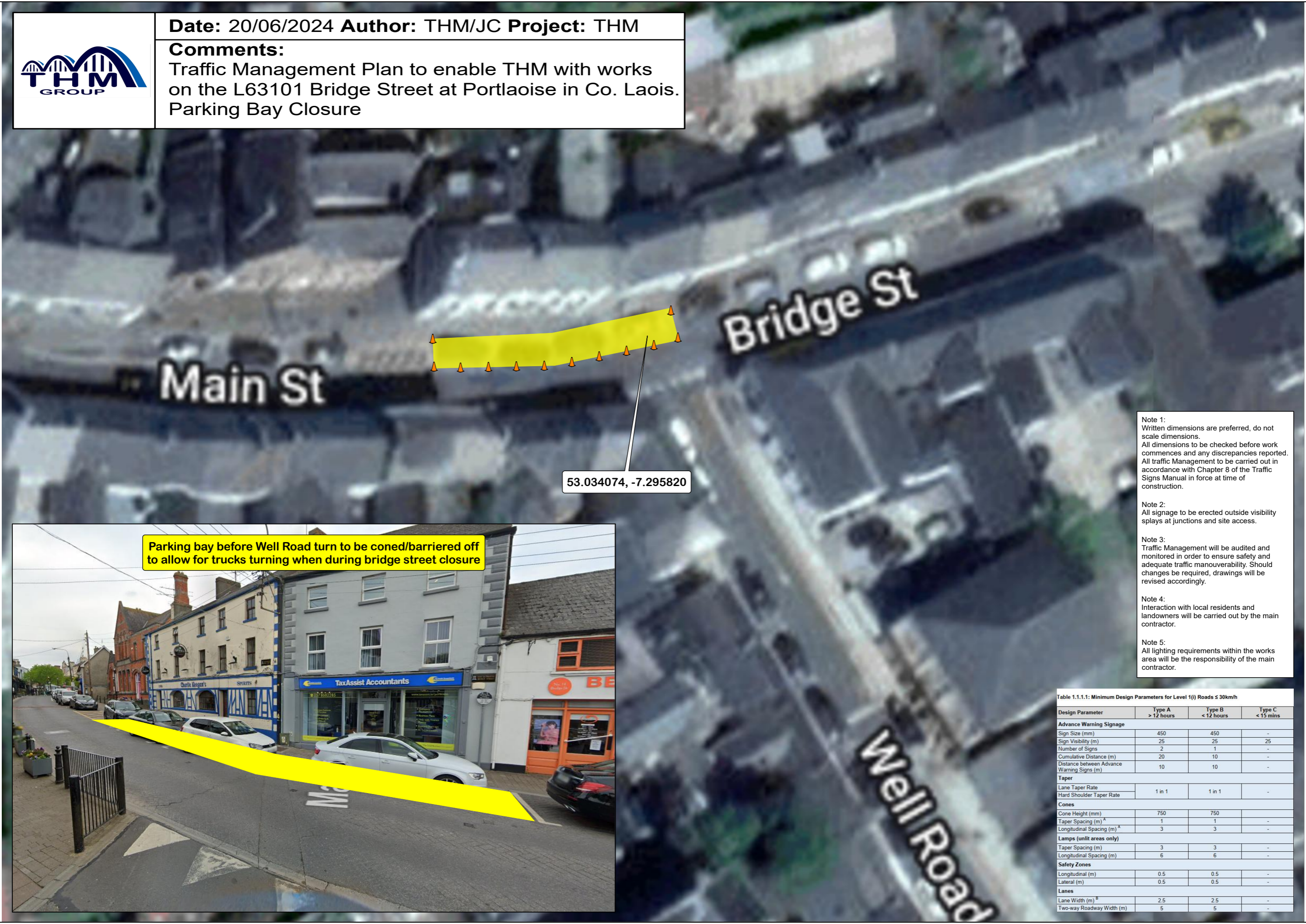




Date: 20/06/2024 **Author:** THM/JC **Project:** THM
Comments:
 Traffic Management Plan to enable THM with works on the L63101 Bridge Street at Portlaoise in Co. Laois. Parking Bay Closure



- Note 1:
Written dimensions are preferred, do not scale dimensions.
All dimensions to be checked before work commences and any discrepancies reported.
All traffic Management to be carried out in accordance with Chapter 8 of the Traffic Signs Manual in force at time of construction.
- Note 2:
All signage to be erected outside visibility splays at junctions and site access.
- Note 3:
Traffic Management will be audited and monitored in order to ensure safety and adequate traffic manoeuvrability. Should changes be required, drawings will be revised accordingly.
- Note 4:
Interaction with local residents and landowners will be carried out by the main contractor.
- Note 5:
All lighting requirements within the works area will be the responsibility of the main contractor.

Parking bay before Well Road turn to be coned/barriered off to allow for trucks turning when during bridge street closure



Table 1.1.1.1: Minimum Design Parameters for Level 1(i) Roads ≤ 30km/h

Design Parameter	Type A > 12 hours	Type B < 12 hours	Type C < 15 mins
Advance Warning Signage			
Sign Size (mm)	450	450	-
Sign Visibility (m)	25	25	25
Number of Signs	2	1	-
Cumulative Distance (m)	20	10	-
Distance between Advance Warning Signs (m)	10	10	-
Taper			
Lane Taper Rate	1 in 1	1 in 1	-
Hard Shoulder Taper Rate	-	-	-
Cones			
Cone Height (mm)	750	750	-
Taper Spacing (m) ^A	1	1	-
Longitudinal Spacing (m) ^A	3	3	-
Lamps (unlit areas only)			
Taper Spacing (m)	3	3	-
Longitudinal Spacing (m)	6	6	-
Safety Zones			
Longitudinal (m)	0.5	0.5	-
Lateral (m)	0.5	0.5	-
Lanes			
Lane Width (m) ^B	2.5	2.5	-
Two-way Roadway Width (m)	5	5	-