

Manifest

- 10 x WK 091 Diverted Traffic
- 8 x WK 094 Road Closed
- 6 x P 003R Direction
- 5 x P 001
- 5 x WK 001 Roadworks Ahead
- 4 x P 003L Direction
- 4 x WK 090 Detour
- 3 x pedestrian barrier
- 2 x WK 092 End Detour
- 1 x Local Access Only

Note 1:
Written dimensions are preferred, do not scale dimensions.
All dimensions to be checked before work commences and any discrepancies reported.
All traffic Management to be carried out in accordance with Chapter 8 of the Traffic Signs Manual in force at time of construction.

Note 2:
All signage to be erected outside visibility plays at junctions and site access.

Note 3:
Traffic Management will be audited and monitored in order to ensure safety and adequate traffic manoeuvrability. Should changes be required, drawings will be revised accordingly.

Note 4:
Interaction with local residents and landowners will be carried out by the main contractor.

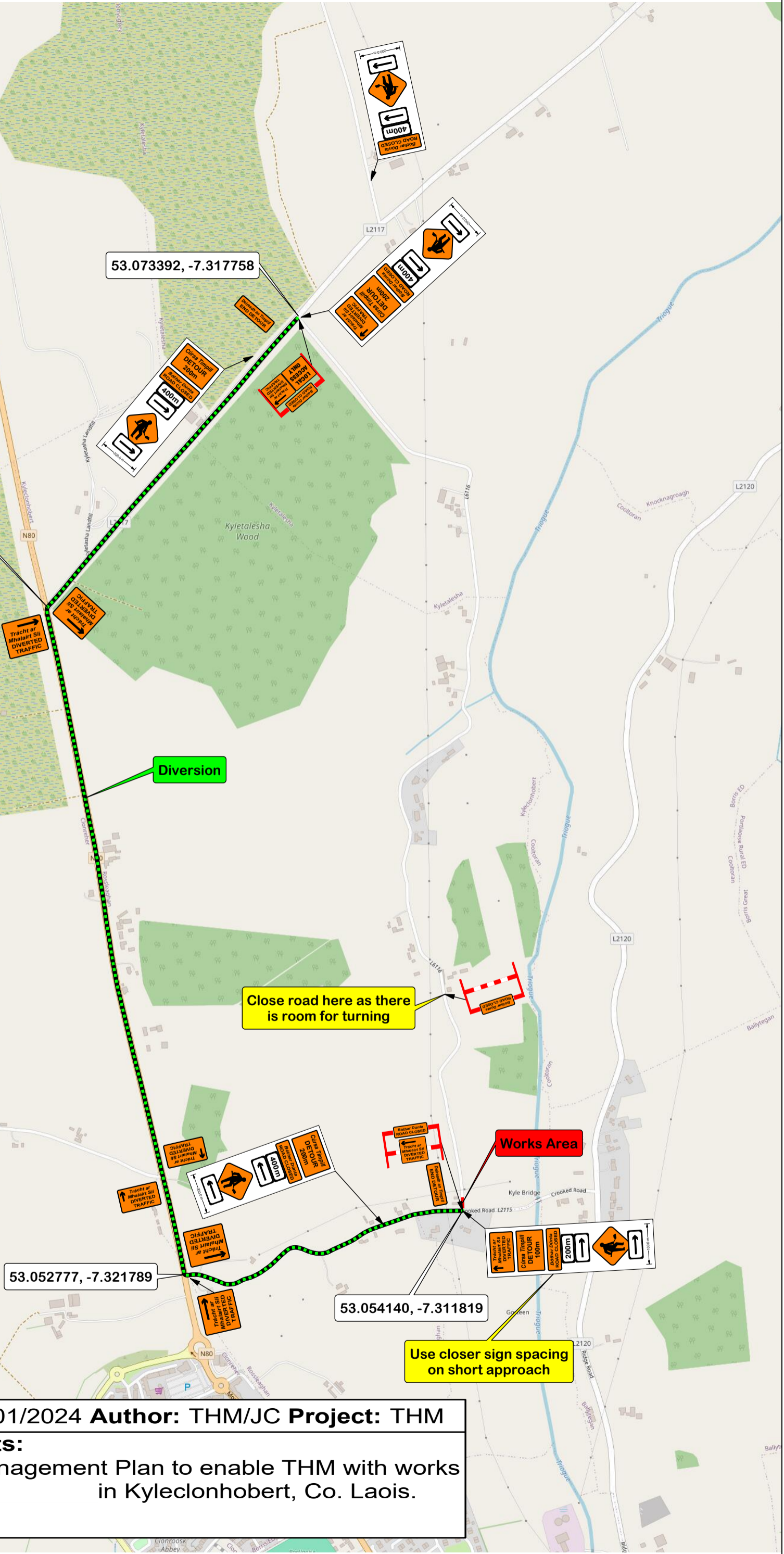
Note 5:
All lighting requirements within the works area will be the responsibility of the main contractor.

Table 2.2.2.1: Minimum Design Parameters for Level 2(i) Roads Single Carriageway 80km/h

Design Parameter	Type A > 12 hours	Type B < 12 hours	Type C < 15 mins
Advance Warning Signage			
Sign Size (mm)	600	600	-
Sign Visibility (m)	90	90	90
Number of Signs	4	3	-
Cumulative Distance (m)	480	360	-
Distance between advance warning signs (m)	120	120	-
Taper			
Lane Taper Rate ^A	1 in 40	1 in 40	-
Hard Shoulder Taper Rate ^A	-	-	-
Cones			
Cone Height (mm)	750	750	-
Taper Spacing (m) ^B	3	3	-
Longitudinal Spacing (m) ^B	12	12	-
Lamps (unlit areas only)			
Taper Spacing (m)	6	6	-
Longitudinal Spacing (m)	24	24	-
Safety Zones			
Longitudinal (m)	45	45	-
Lateral (m)	1.2	1.2	-
Lanes			
Lane Width (m) ^C	3	3	-

Table 2.2.2.2: Minimum Design Parameters for Level 2(ii) Roads Single Carriageway 100km/h

Design Parameter	Type A > 12 hours	Type B < 12 hours	Type C < 15 mins
Advance Warning Signage			
Sign Size (mm)	750	750	-
Sign Visibility (m)	120	120	120
Number of Signs	4	3	-
Cumulative Distance (m)	800	600	-
Distance between advance warning signs (m)	200	200	-
Taper			
Lane Taper Rate ^A	1 in 60	1 in 60	-
Hard Shoulder Taper Rate ^A	1 in 30	1 in 30	-
Cones			
Cone Height (mm)	1,000	1,000	-
Taper Spacing (m) ^B	3	3	-
Longitudinal Spacing (m) ^B	12	12	-
Lamps (unlit areas only)			
Taper Spacing (m)	6	6	-
Longitudinal Spacing (m)	24	24	-
Safety Zones			
Longitudinal (m)	60	60	-
Lateral (m)	1.2	1.2	-
Lanes			
Lane Width (m) ^C	3	3	-



Date: 16/01/2024 **Author:** THM/JC **Project:** THM

Comments:
Traffic Management Plan to enable THM with works at
in Kyleclonhobert, Co. Laois.