



Date: 08/01/2024 **Author:** THM/JC **Project:** THM5934

Comments:
Traffic Management Plan to enable THM with works on the L3777 at Ballypickas in Co. Laois.

Legend	
	Cone
	Lat. Safety Zone
	Long. Safety Zone
	Taper
	Works Area

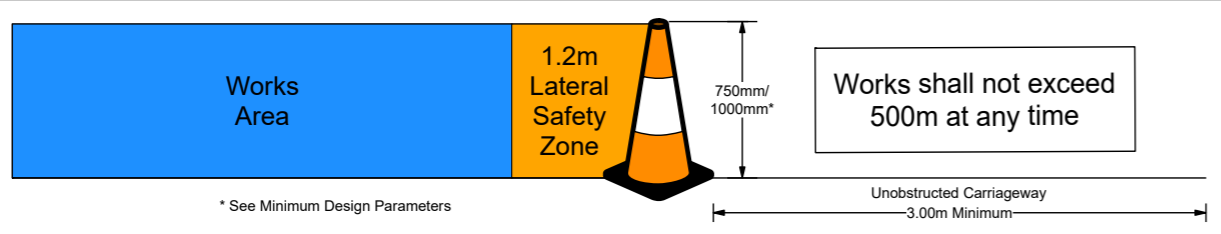


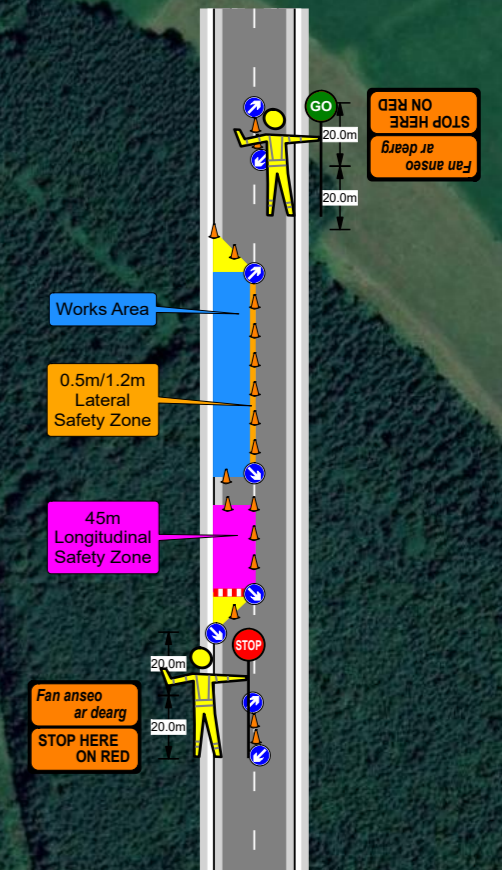
Table 2.2.2.1: Minimum Design Parameters for Level 2(i) Roads Single Carriageway 80km/h

Design Parameter	Type A > 12 hours	Type B < 12 hours	Type C < 15 mins
Advance Warning Signage			
Sign Size (mm)	600	600	-
Sign Visibility (m)	90	90	90
Number of Signs	4	3	-
Cumulative Distance (m)	480	360	-
Distance between advance warning signs (m)	120	120	-
Taper			
Lane Taper Rate ^A	1 in 40	1 in 40	-
Hard Shoulder Taper Rate ^A	-	-	-
Cones			
Cone Height (mm)	750	750	-
Taper Spacing (m) ^B	3	3	-
Longitudinal Spacing (m) ^B	12	12	-
Lamps (unlit areas only)			
Taper Spacing (m)	6	6	-
Longitudinal Spacing (m)	24	24	-
Safety Zones			
Longitudinal (m)	45	45	-
Lateral (m)	1.2	1.2	-
Lanes			
Lane Width (m) ^C	3	3	-

Notes:
 A. 45° taper is required at shuttle traffic controlled layouts with cones at 1m centres
 B. Cone spacing is the maximum permitted. Where geometry or any other site-specific reason dictates the spacing shall be reduced accordingly.
 C. The optimum lane width for all classes of vehicles is 3.3m. This may be reduced to a minimum of 3m. Below this, HGVs and buses must be marshalled past the works. The absolute minimum lane width, if only cars and light vehicles are present, is 2.5m. See Section 0.4.3.4.

- Manifest**
- 26 x Cone
 - 6 x WK 061 Flagman Ahead
 - 5 x RUS 001 Keep Left
 - 4 x WK 001 Roadworks Ahead
 - 3 x RUS 002 Keep Right
 - 2 x P 003L Direction
 - 2 x P 003R Direction
 - 2 x RUS 060 Stop and Go Disk - STOP
 - 2 x RUS 061 Stop and Go Disk - GO
 - 2 x RUS014 No Overtaking
 - 2 x WK 095 Stop Here on Red
 - 1 x W 185 Barrier Board

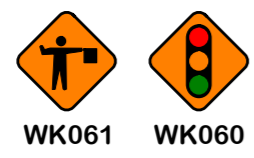
Works Area Detail



52.911755, -7.294254

NB. When flagmen are used, and subject to a risk assessment, the lateral safety zone may be reduced from 1.2m to 0.5m

If traffic lights are used instead of flagmen, replace all signage WK061 with WK060



- Note 1:** Written dimensions are preferred, do not scale dimensions. All dimensions to be checked before work commences and any discrepancies reported. All traffic Management to be carried out in accordance with Chapter 8 of the Traffic Signs Manual in force at time of construction.
- Note 2:** All signage to be erected outside visibility plays at junctions and site access.
- Note 3:** Traffic Management will be audited and monitored in order to ensure safety and adequate traffic manoeuvrability. Should changes be required, drawings will be revised accordingly.
- Note 4:** Interaction with local residents and landowners will be carried out by the main contractor.
- Note 5:** All lighting requirements within the works area will be the responsibility of the main contractor.