



**Date:** 01/03/2024 **Author:** THM/JC **Project:** THM

**Comments:**  
Traffic Management Plan to enable THM with works on the L2122 at Ross, Woodbrook in Co. Laois.

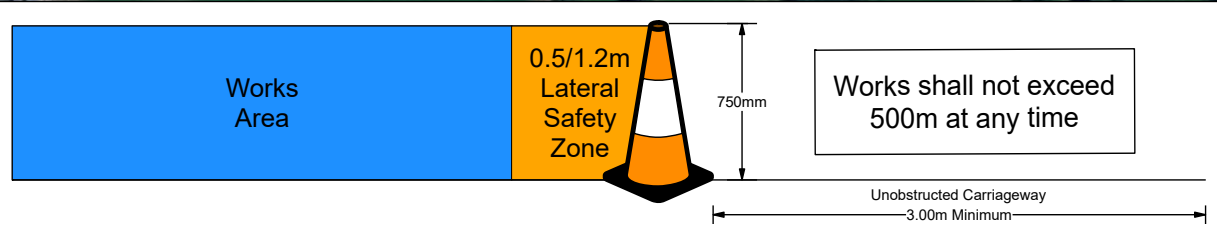
If flagmen are used instead of traffic lights, replace all signage WK060 with WK061



Table 2.2.2.1: Minimum Design Parameters for Level 2(i) Roads Single Carriageway 80km/h

Design Parameter	Type A > 12 hours	Type B < 12 hours	Type C < 15 mins
<b>Advance Warning Signage</b>			
Sign Size (mm)	600	600	-
Sign Visibility (m)	90	90	90
Number of Signs	4	3	-
Cumulative Distance (m)	480	360	-
Distance between advance warning signs (m)	120	120	-
<b>Taper</b>			
Lane Taper Rate <sup>A</sup>	1 in 40	1 in 40	-
Hard Shoulder Taper Rate <sup>A</sup>	-	-	-
<b>Cones</b>			
Cone Height (mm)	750	750	-
Taper Spacing (m) <sup>B</sup>	3	3	-
Longitudinal Spacing (m) <sup>B</sup>	12	12	-
<b>Lamps (unit areas only)</b>			
Taper Spacing (m)	6	6	-
Longitudinal Spacing (m)	24	24	-
<b>Safety Zones</b>			
Longitudinal (m)	45	45	-
Lateral (m)	1.2	1.2	-
<b>Lanes</b>			
Lane Width (m) <sup>C</sup>	3	3	-

**Notes:**  
 A. 45° taper is required at shuttle traffic controlled layouts with cones at 1m centres  
 B. Cone spacing is the maximum permitted. Where geometry or any other site-specific reason dictates the spacing shall be reduced accordingly.  
 C. The optimum lane width for all classes of vehicles is 3.3m. This may be reduced to a minimum of 3m. Below this, HGVs and buses must be marshalled past the works. The absolute minimum lane width, if only cars and light vehicles are present, is 2.5m. See Section 0.4.3.4.



Roadworks End signage shall be placed 20m-50m after works



NB. When flagmen are used, and subject to a risk assessment, the lateral safety zone may be reduced from 1.2m to 0.5m

Overtaking is already prohibited on western approach

Use closer sign spacing on side road approaches

53.044725, -7.368835

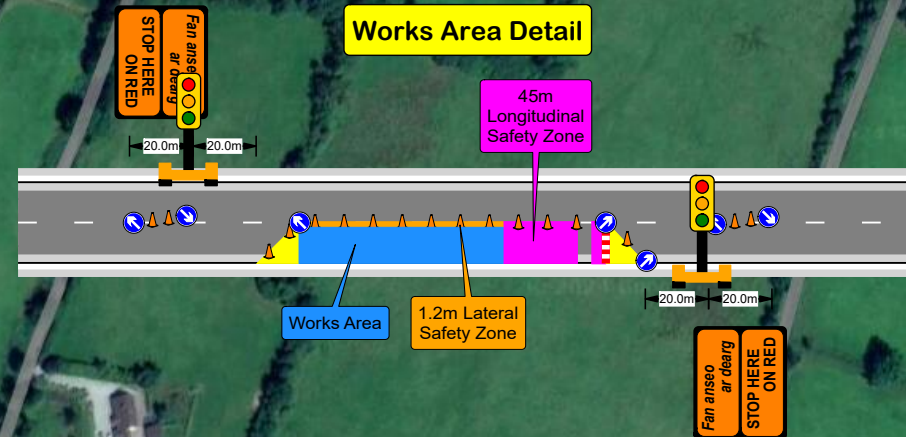
**Legend**

- Cone
- Lat. Safety Zone
- Long. Safety Zone
- Taper
- Works Area

**Manifest**

- 23 x Cone
- 8 x WK 001 Roadworks Ahead
- 8 x WK 060 Temporary Traffic Signals
- 6 x P 003R Direction
- 5 x RUS 001 Keep Left
- 4 x WK 095 Stop Here on Red
- 2 x P 003L Direction
- 2 x P 010 End
- 2 x Portable lane control
- 2 x RUS 002 Keep Right
- 1 x RUS014 No Overtaking
- 1 x W 185 Barrier Board

**Works Area Detail**



**Note 1:** Written dimensions are preferred, do not scale dimensions. All dimensions to be checked before work commences and any discrepancies reported. All traffic Management to be carried out in accordance with Chapter 8 of the Traffic Signs Manual in force at time of construction.

**Note 2:** All signage to be erected outside visibility plays at junctions and site access.

**Note 3:** Traffic Management will be audited and monitored in order to ensure safety and adequate traffic maneuverability. Should changes be required, drawings will be revised accordingly.

**Note 4:** Interaction with local residents and landowners will be carried out by the main contractor.

**Note 5:** All lighting requirements within the works area will be the responsibility of the main contractor.