



**Date:** 29/03/2024 **Author:** THM/JC **Project:** THM5973

**Comments:**  
Traffic Management Plan to enable THM with works on the L2110 at Clonreher in Co. Laois.

**Manifest**

- 18 x WK 091 Diverted Traffic
- 8 x WK 094 Road Closed
- 4 x P 001
- 4 x P 003R Direction
- 4 x pedestrian barrier
- 4 x WK 001 Roadworks Ahead
- 4 x WK 090 Detour
- 2 x Local Access Only
- 2 x P 003L Direction
- 2 x WK 092 End Detour

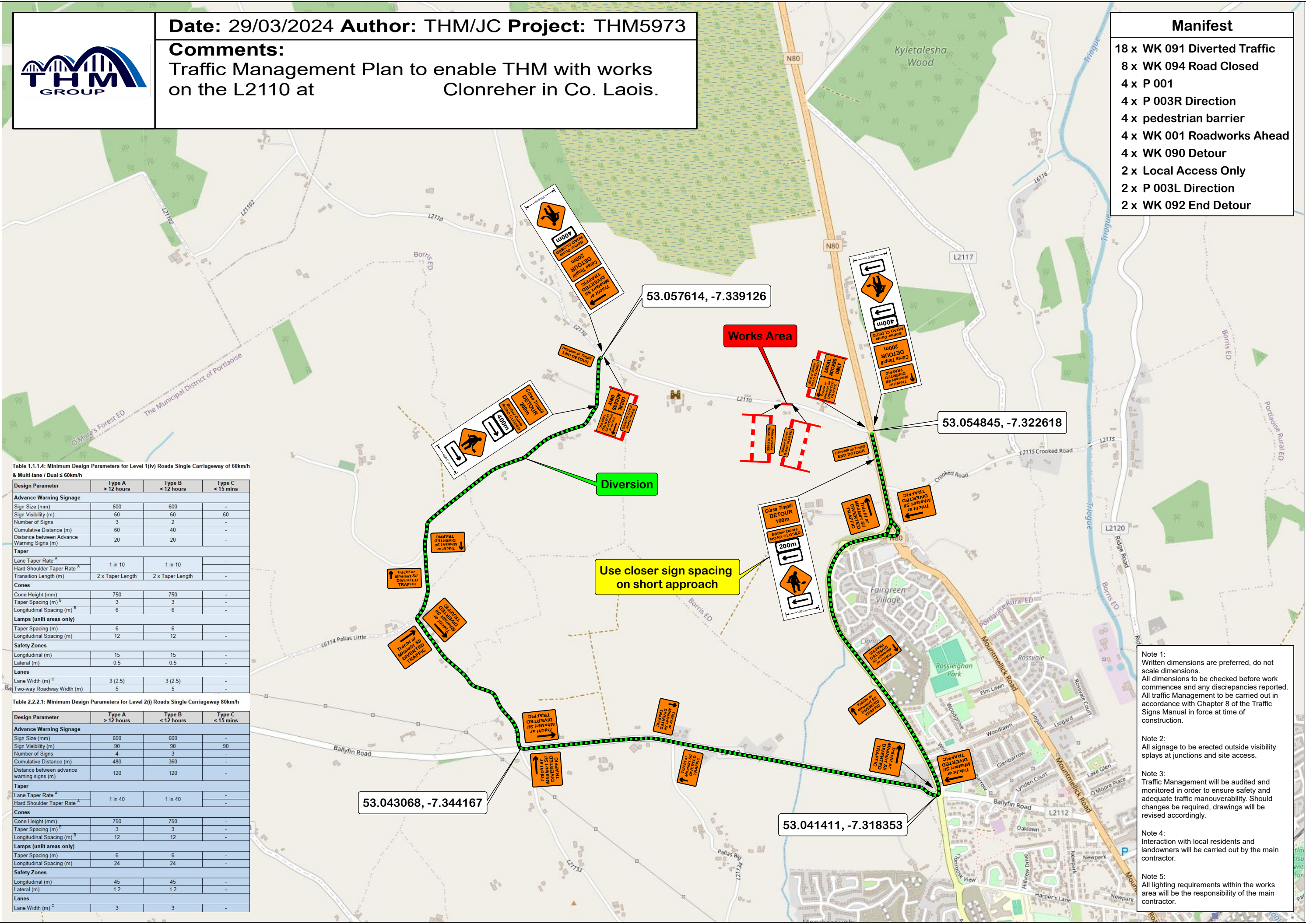


Table 1.1.1.4: Minimum Design Parameters for Level 1(v) Roads Single Carriageway of 60km/h & Multi-lane / Dual ≤ 60km/h

Design Parameter	Type A > 12 hours	Type B < 12 hours	Type C < 15 mins
<b>Advance Warning Signage</b>			
Sign Size (mm)	600	600	-
Sign Visibility (m)	60	60	60
Number of Signs	3	2	-
Cumulative Distance (m)	60	40	-
Distance between Advance Warning Signs (m)	20	20	-
<b>Taper</b>			
Lane Taper Rate <sup>A</sup>	1 in 10	1 in 10	-
Hard Shoulder Taper Rate <sup>A</sup>	-	-	-
Transition Length (m)	2 x Taper Length	2 x Taper Length	-
<b>Cones</b>			
Cone Height (mm)	750	750	-
Taper Spacing (m) <sup>B</sup>	3	3	-
Longitudinal Spacing (m) <sup>B</sup>	6	6	-
<b>Lamps (unlit areas only)</b>			
Taper Spacing (m)	6	6	-
Longitudinal Spacing (m)	12	12	-
<b>Safety Zones</b>			
Longitudinal (m)	15	15	-
Lateral (m)	0.5	0.5	-
<b>Lanes</b>			
Lane Width (m) <sup>C</sup>	3 (2.5)	3 (2.5)	-
Two-way Roadway Width (m)	5	5	-

Table 2.2.2.1: Minimum Design Parameters for Level 2(i) Roads Single Carriageway 80km/h

Design Parameter	Type A > 12 hours	Type B < 12 hours	Type C < 15 mins
<b>Advance Warning Signage</b>			
Sign Size (mm)	600	600	-
Sign Visibility (m)	90	90	90
Number of Signs	4	3	-
Cumulative Distance (m)	480	360	-
Distance between advance warning signs (m)	120	120	-
<b>Taper</b>			
Lane Taper Rate <sup>A</sup>	1 in 40	1 in 40	-
Hard Shoulder Taper Rate <sup>A</sup>	-	-	-
<b>Cones</b>			
Cone Height (mm)	750	750	-
Taper Spacing (m) <sup>B</sup>	3	3	-
Longitudinal Spacing (m) <sup>B</sup>	12	12	-
<b>Lamps (unlit areas only)</b>			
Taper Spacing (m)	6	6	-
Longitudinal Spacing (m)	24	24	-
<b>Safety Zones</b>			
Longitudinal (m)	45	45	-
Lateral (m)	1.2	1.2	-
<b>Lanes</b>			
Lane Width (m) <sup>C</sup>	3	3	-

- Note 1: Written dimensions are preferred, do not scale dimensions. All dimensions to be checked before work commences and any discrepancies reported. All traffic Management to be carried out in accordance with Chapter 8 of the Traffic Signs Manual in force at time of construction.
- Note 2: All signage to be erected outside visibility plays at junctions and site access.
- Note 3: Traffic Management will be audited and monitored in order to ensure safety and adequate traffic manoeuvrability. Should changes be required, drawings will be revised accordingly.
- Note 4: Interaction with local residents and landowners will be carried out by the main contractor.
- Note 5: All lighting requirements within the works area will be the responsibility of the main contractor.