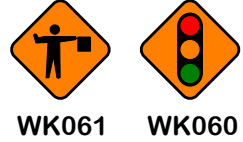




Date: 21/05/2024 **Author:** THM/JC **Project:** THM
Comments:
 Traffic Management Plan to enable THM with works on the L1738 at Ironmills, Co. Laois.

| Legend | |
|--------|-------------------|
| | Cone |
| | Lat. Safety Zone |
| | Long. Safety Zone |
| | Taper |
| | Works Area |

If traffic lights are used instead of flagmen, replace all signage WK061 with WK060



Works area to be split into sections and moved as necessary under an ALL STOP to enable completion of works

NB. Some of works will be carried out using a full road closure - see separate plans

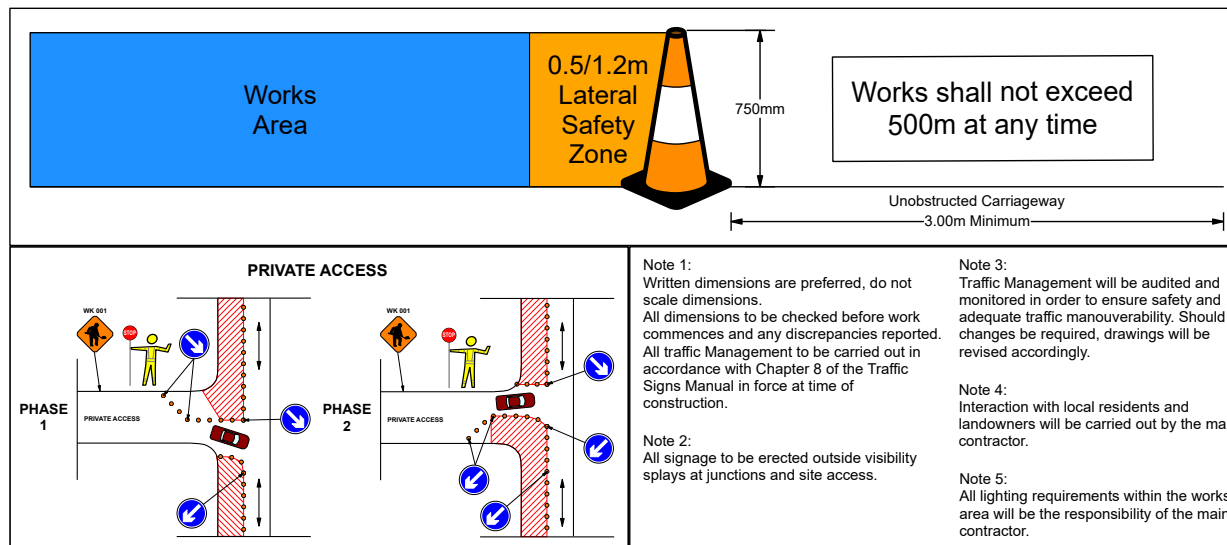
Table 2.2.2.1: Minimum Design Parameters for Level 2(i) Roads Single Carriageway 80km/h

| Design Parameter | Type A > 12 hours | Type B < 12 hours | Type C < 15 mins |
|--|----------------------|----------------------|---------------------|
| Advance Warning Signage | | | |
| Sign Size (mm) | 600 | 600 | - |
| Sign Visibility (m) | 90 | 90 | 90 |
| Number of Signs | 4 | 3 | - |
| Cumulative Distance (m) | 480 | 360 | - |
| Distance between advance warning signs (m) | 120 | 120 | - |
| Taper | | | |
| Lane Taper Rate ^A | 1 in 40 | 1 in 40 | - |
| Hard Shoulder Taper Rate ^A | - | - | - |
| Cones | | | |
| Cone Height (mm) | 750 | 750 | - |
| Taper Spacing (m) ^B | 3 | 3 | - |
| Longitudinal Spacing (m) ^B | 12 | 12 | - |
| Lamps (unlit areas only) | | | |
| Taper Spacing (m) | 6 | 6 | - |
| Longitudinal Spacing (m) | 24 | 24 | - |
| Safety Zones | | | |
| Longitudinal (m) | 45 | 45 | - |
| Lateral (m) | 1.2 | 1.2 | - |
| Lanes | | | |
| Lane Width (m) ^C | 3 | 3 | - |

Notes:
 A. 45° taper is required at shuttle traffic controlled layouts with cones at 1m centres
 B. Cone spacing is the maximum permitted. Where geometry or any other site-specific reason dictates the spacing shall be reduced accordingly.
 C. The optimum lane width for all classes of vehicles is 3.3m. This may be reduced to a minimum of 3m. Below this, HGVs and buses must be marshalled past the works. The absolute minimum lane width, if only cars and light vehicles are present, is 2.5m. See Section 0.4.3.4.



NB. When flagmen are used, and subject to a risk assessment, the lateral safety zone may be reduced from 1.2m to 0.5m



Repeat appropriate advanced warning signage for speed limit on additional approaches using P003L/R arrows as necessary

