



Legend

-  Overall Alternative Pedestrian Route
-  Overall Footpath Closure

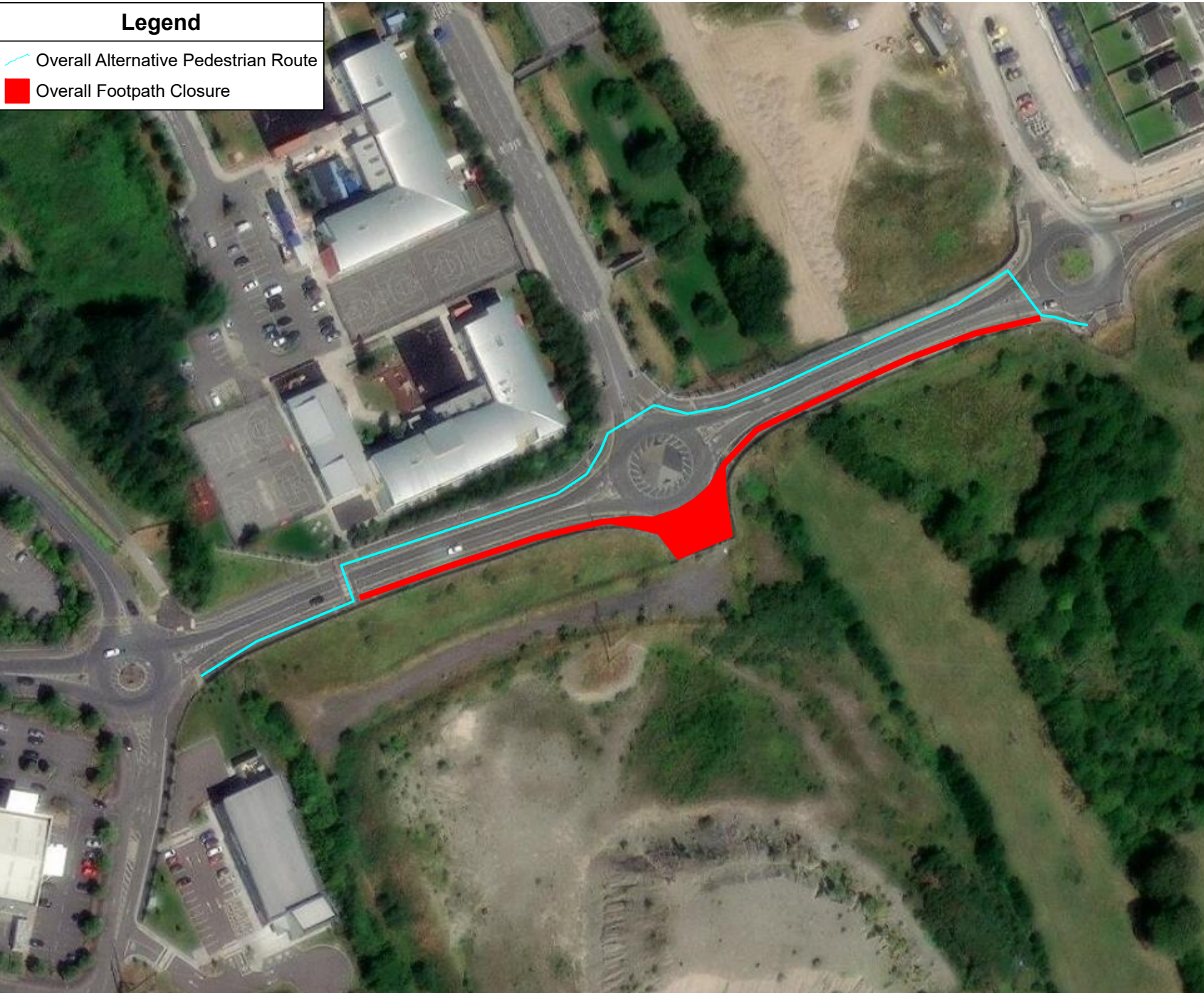


Table 8.2.4
Minimum Design Parameters for Level (I/II) Roads
(Single Carriageway at Sights)

Design Parameter	Type A > 12 hours	Type B < 12 hours	Type C < 15 mins
Advance Warning Signage			
Sign Size (mm)	600	600	50
Sign Visibility (m)	50	50	50
Number of Signs	2	2	-
Cumulative Distance (m)	40	40	-
Distance between Advance Warning Signs (m)	20	20	-
Taper			
Lane Taper Rate ^a	1 in 5	1 in 5	-
Hard Shoulder Taper Rate ^a	1 in 5	1 in 5	-
Cone			
Cone Height (mm)	750	750	-
Taper Spacing (m) ^b	3	3	-
Longitudinal Spacing (m) ^b	3	3	-
Lamps (all areas only)			
Taper Spacing (m)	6	6	-
Longitudinal Spacing (m)	6	6	-
Safety Zones			
Longitudinal (m)	5	5	-
Lateral (m)	0.5	0.5	-
Lanes			
Lane Width (m) ^c	3 (2.5)	3 (2.5)	-
Two-way Roadway Width (m)	5	5	-

Note 1:
Written Dimensions are preferred, do not scale dimensions. All Dimensions to be checked before works commence and any discrepancies reported.
All Traffic Management to be in accordance with Chapter 8 of the Traffic Signs Manual in force at the time of construction.

Note 2:
All Signage to be erected outside visibility splays at junctions and Site Access.

Note 3:
Traffic Management will be audited and monitored in order to ensure safety and adequate traffic manoeuvrability. Should changes be required TTM will be revised accordingly

Note 4:
Interaction between local residents and land owners will be carried out by Main Contractor

Note 5:
All Lighting requirements within the works will be the responsibility of the Main Contractor.

DATE:
09.10.2023

JOB NUMBER:
SCRPRPKCELCC09102023

PROJECT NUMBER:
SCRPRPKCELCC09102023

AUTHOR:
James O'Neill

LOCATION:
South Circular Road,
Portlaoise, Co. Laois

Temporary Traffic Management
to enable works on South Circular
Road

Type of TTM:
Static - Overall Scope of Footpath
Closure and Pedestrian Diversion

