

Table 8.2.2.4  
Minimum Design Parameters for Level 1(H) Roads  
(Single Carriageway of 50km/h)

Design Parameter	Type A > 12 hours	Type B < 12 hours	Type C < 15 mins
<b>Advance Warning Signage</b>			
Sign Size (mm)	600	600	-
Sign Visibility (m)	50	50	50
Number of Signs	2	2	-
Cumulative Distance (m)	40	40	-
Distance between Advance Warning Signs (m)	20	20	-
<b>Taper</b>			
Line Taper Rate <sup>1</sup>	1 in 5	1 in 5	-
Hard Shoulder Taper Rate <sup>2</sup>	-	-	-
<b>Cone</b>			
Cone Height (mm)	750	750	-
Taper Spacing (m) <sup>3</sup>	3	3	-
Longitudinal Spacing (m) <sup>3</sup>	3	3	-
<b>Lamps (unit areas only)</b>			
Taper Spacing (m)	6	6	-
Longitudinal Spacing (m)	6	6	-
<b>Safety Zones</b>			
Longitudinal (m)	5	5	-
Lateral (m)	0.5	0.5	-
<b>Lanes</b>			
Lane Width (m) <sup>4</sup>	3 (2.5)	3 (2.5)	-
Two-way Roadway Width (m)	5	5	-

**Note 1:** Written Dimensions are preferred, do not scale dimensions. All Dimensions to be checked before works commence and any discrepancies reported.  
**Note 2:** All Signage to be erected outside visibility plays at junctions and Site Access.  
**Note 3:** Traffic Management will be audited and monitored in order to ensure safety and adequate traffic maneuverability. Should changes be required TTMP will be revised accordingly.  
**Note 4:** Interaction between local residents and land owners will be carried out by Main Contractor.  
**Note 5:** All lighting requirements within the works will be the responsibility of the Main Contractor.

**DATE:**  
11/11/2022

**JOB NUMBER:**  
BMJON11112022

**PROJECT NUMBER:**  
BMJON11112022

**AUTHOR:**  
James O'Neill

**LOCATION:**  
Ballymorris Manor  
Entrance, Portarlington, Co. Laois

Temporary Traffic Management  
to enable works on R419

Type of TTM:  
Static - Road Narrows (Phase 1)

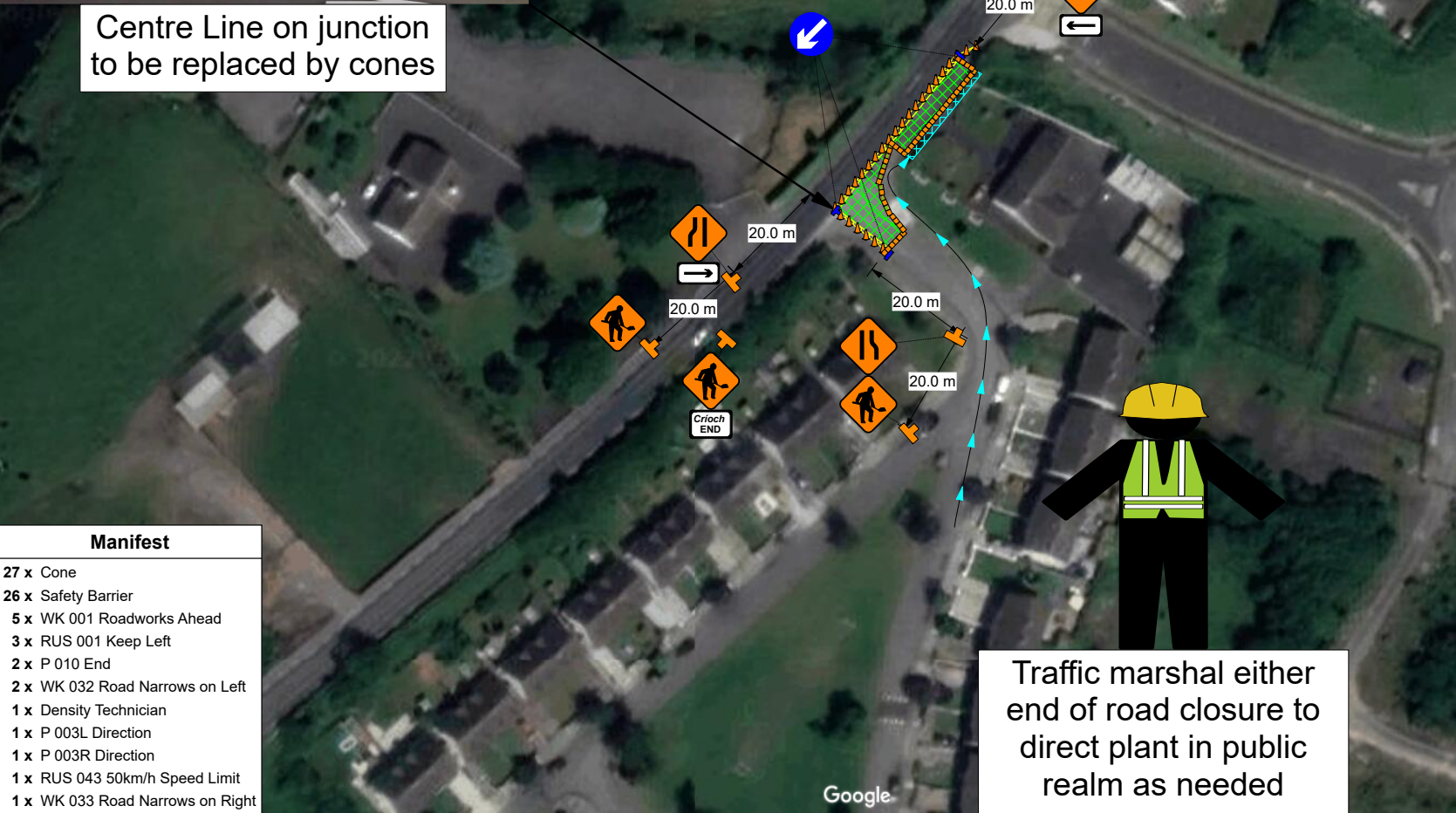


**Legend**

- Cone
- Existing Pedestrian footpath with temporary section in tandem with works
- Safety Barrier
- Safety Zone
- Scraped off area in tandem with works for Pedestrians
- Work Area



Centre Line on junction  
to be replaced by cones



Traffic marshal either  
end of road closure to  
direct plant in public  
realm as needed

**Manifest**

- 27 x Cone
- 26 x Safety Barrier
- 5 x WK 001 Roadworks Ahead
- 3 x RUS 001 Keep Left
- 2 x P 010 End
- 2 x WK 032 Road Narrows on Left
- 1 x Density Technician
- 1 x P 003L Direction
- 1 x P 003R Direction
- 1 x RUS 043 50km/h Speed Limit
- 1 x WK 033 Road Narrows on Right