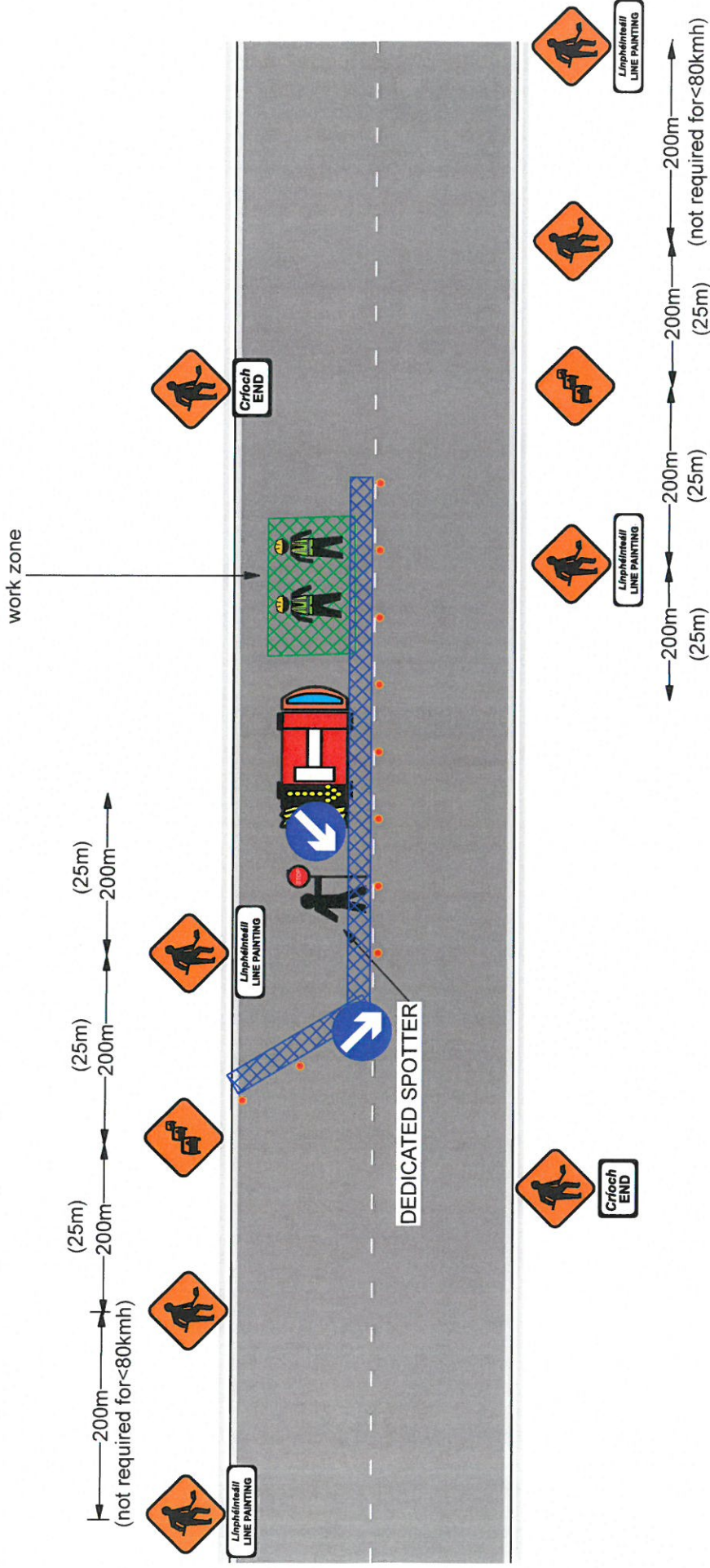


MacRoads Traffic Management Generic Drawings.

Laois Co Co Wks @ Colt Abbeyleix - Portlaoise Rd

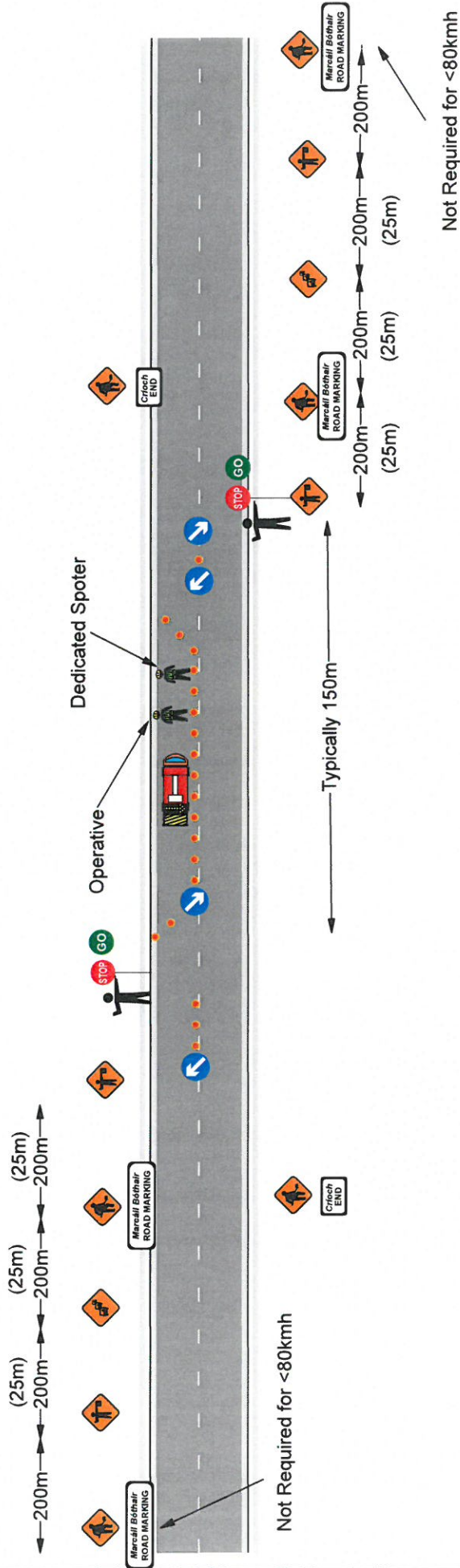


DESIGN PARAMETERS

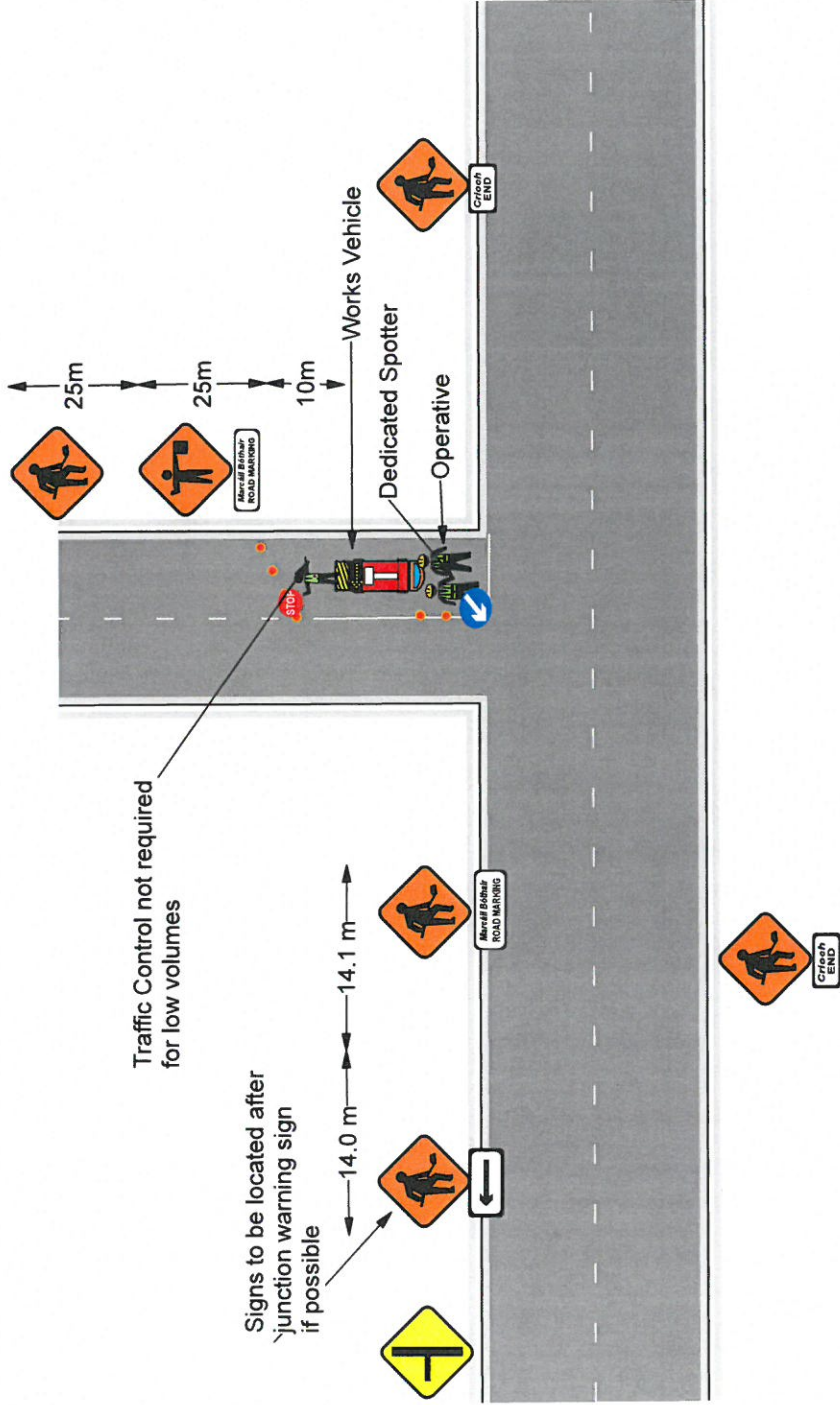
- All signage to be as per table 8.2.1 of the Traffic Signs Manual Guidance Document
- Exact sign positions to be agreed on site
- All signs to be of retro-reflective material to Class ref 2 of EN 12899
- 3 minute traffic counts should be carried out at regular intervals to ensure flows are not exceeded
- Dedicated spotter to be used to spot hazards and to protect the operatives
- All traffic approaching works from rear of handtruck to be on all stop

MacRoads Traffic Management Generic Drawings.

Laois Co Co Wks @ Colt Abbyleix - Portlaoise Rd



DESIGN PARAMETERS
 All signage to be as per table 8.2.1 of the Traffic Signs Manual Guidance Document
 Exact sign positions to be agreed on site
 All signs to be of retro-reflective material to Class ref 2 of EN 12899
 3 minute traffic counts should be carried out at regular intervals to ensure flows are not exceeded
 Dedicated spotter to be used to spot hazards and to protect the operatives



Traffic Control not required for low volumes

Signs to be located after junction warning sign if possible

DESIGN PARAMETERS
 All signage to be as per table 8.2.1 of the Traffic Signs Manual Guidance Document
 Exact sign positions to be agreed on site
 All signs to be of retro-reflective material to Class ref 2 of EN 12899
 3 minute traffic counts should be carried out at regular intervals to ensure flows are not exceeded
 Dedicated spotter to be used to spot hazards and to protect the operatives

MacRoads Traffic Management Generic Drawings.
 Laois Co Co Wks @ Colt Abbeyleix - Portlaoise Rd