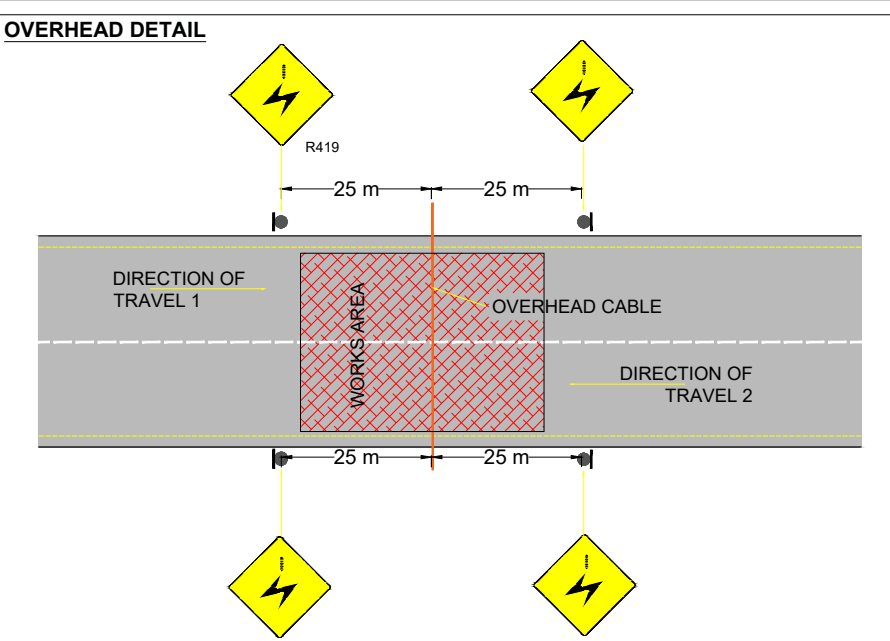
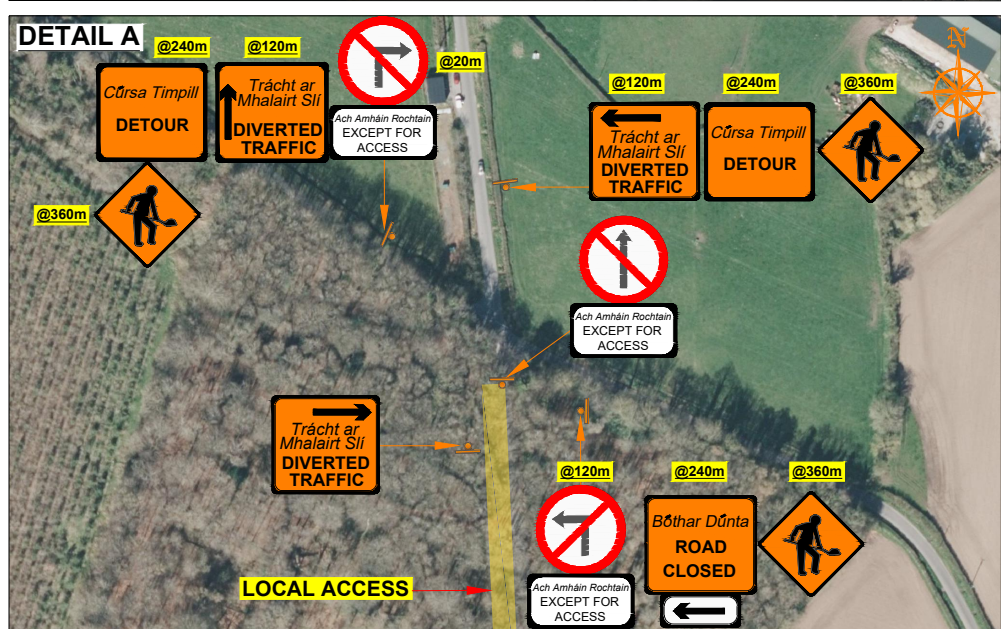
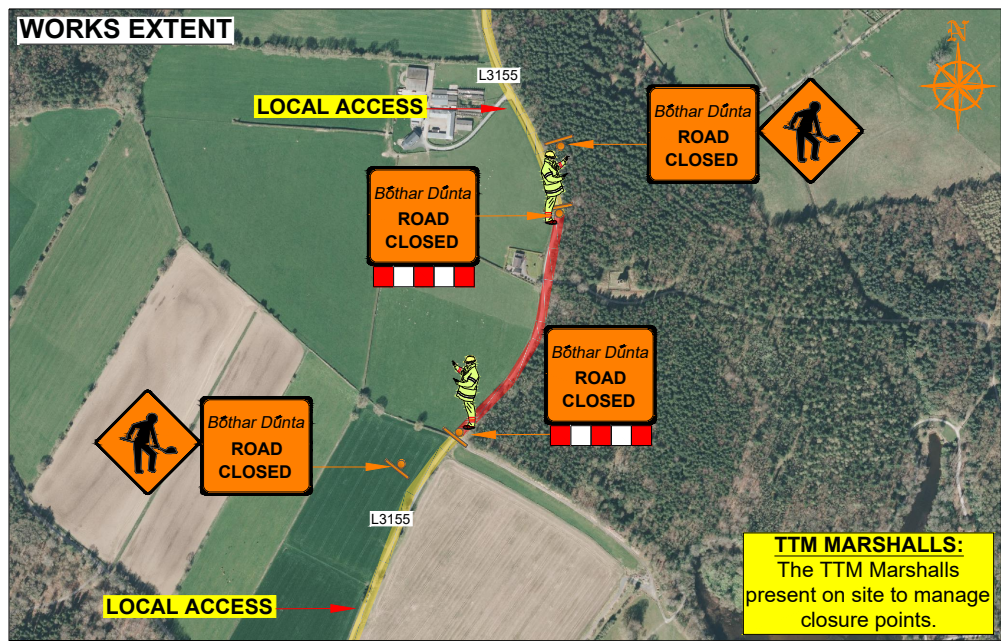
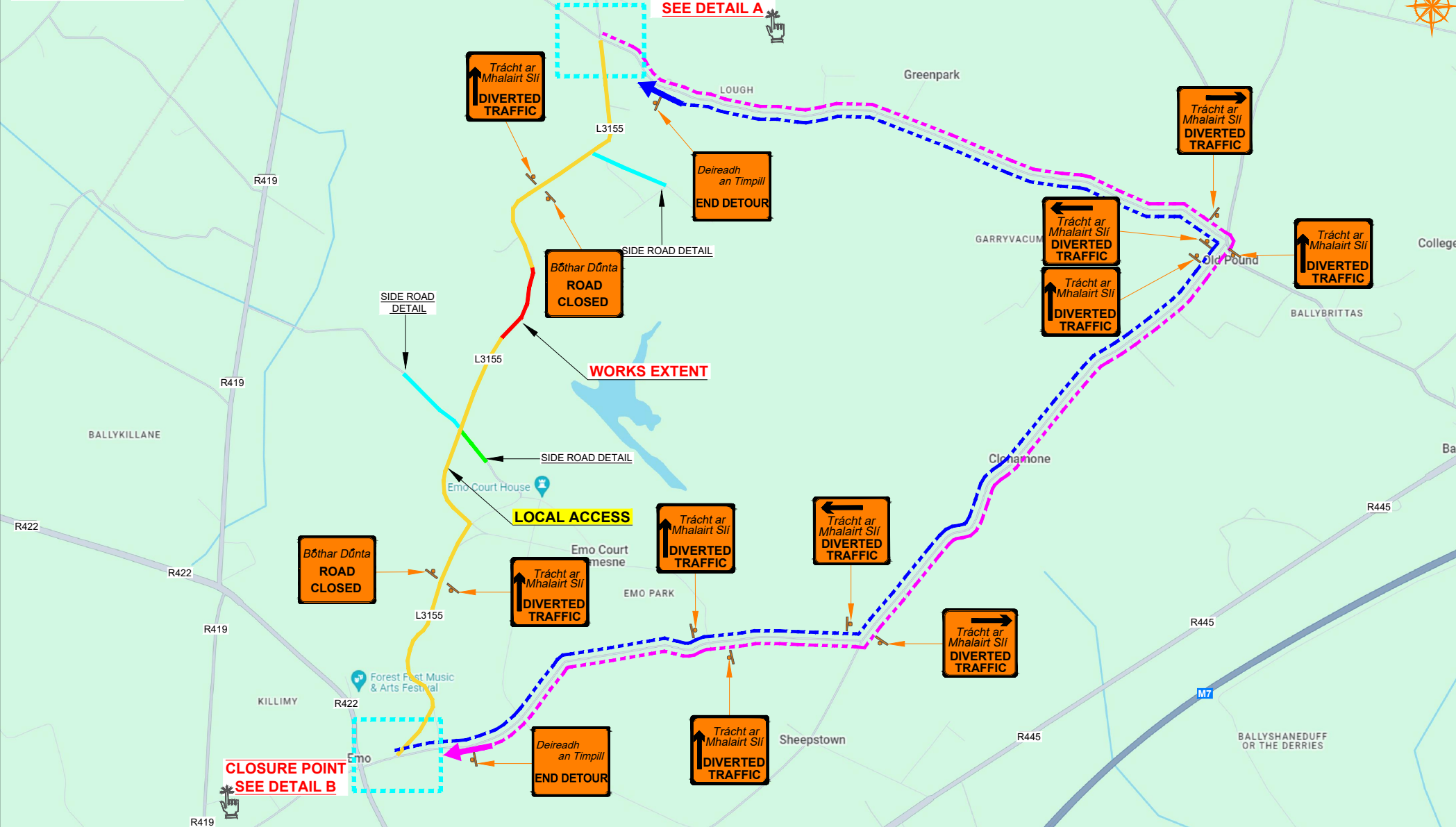
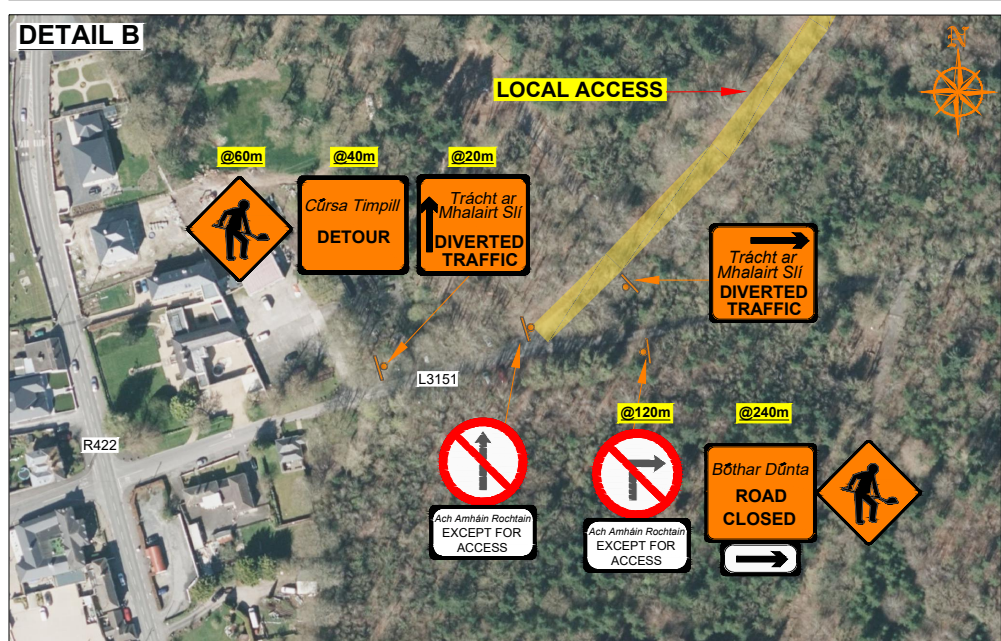
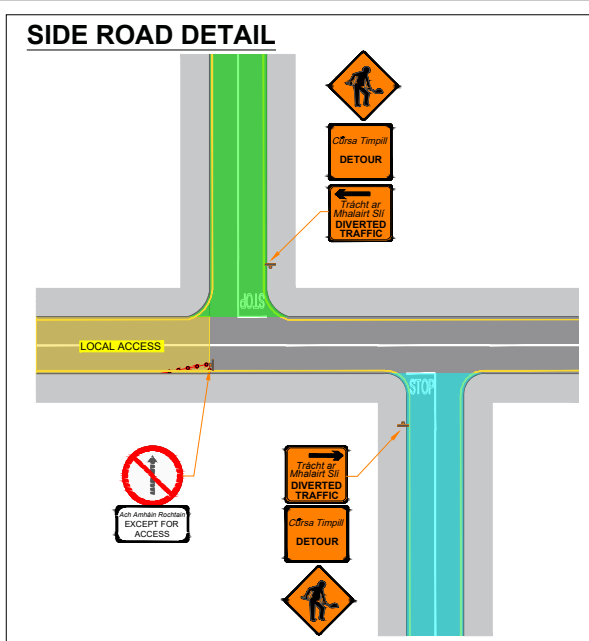
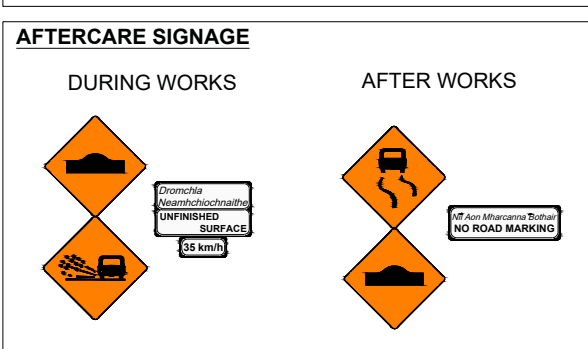


**L-3155-0 Emo Court, Co.Laois (Section 2)**  
**DIVERSION ROUTE**



**NO TIP ZONE MINIMUM CLEARANCE**

Nominal phase-to-phase voltage of overhead line	Minimum lateral clearance in metres
LV conductors	1.0
10kV, 20kV and 38kV	3.0
110kV	4.5
220kV	6.0
400kV	8.0



**ROAD CONTROL**

Copyright Notes:  
 This drawing is the property of Road Control Services Ltd. The design information contained herein is strictly confidential. This document is not to be used, reproduced, disclosed or circulated in whole or in part without prior written consent.

**CLIENT**

**CARROLL QUARRY LTD**

**DESIGN PARAMETERS**

Advance Warning Signage	Sign size 600mm	Sign Visibility 90m	Number of Signs 3	Cumulative Distance 360m	Distance between Advance Warning Signs 120m
<b>Taper</b>	Lane Taper Rate N/A	Hard Shoulder Taper Rate N/A			

Speed Limit 80	Road Classification 2(i) Type B <12hours		
<b>Cones</b>	Cone Height 750mm	Taper Spacing 3m	Longitudinal Spacing 12m
<b>Safety Zones</b>	Longitudinal 45m	Lateral 1.2m	Lanes
	Lane Width 3.0m		

**LEGEND**

- Works Area
- Traffic sign
- Traffic cones
- Local Access
- Diversion Route A
- Diversion Route B

**GENERAL NOTES**

- All information contained in this drawing (including digital data) should be checked and verified prior to any stage of construction;
- All works are to be carried out in accordance with local authority requirements and are to be included in the site-specific safety & health plan;
- Site inspections and maintenance of the traffic management layout is to be agreed with local authority to ensure the safety and integrity of the design;
- Contractor to carry out a site risk assessment prior to the installation of any traffic management plan to ensure that conditions reflect those considered for design post submission;
- Contractor shall be responsible for the provision of ramp access at any change in road surface level where traffic runs on a temporary surface, and for pedestrian/cycle ramps where footpath/cycle-ways have a level discontinuity as per result of the works.

Rev	Date	Details	Drn	Chk	App	Drn	DJ
						Chk	MA
						App	DH
						Date	12-06-2024
						Scale	NTS @A3
						Stage	CONSTRUCTION

**Project**

**L-3155-0 Emo Court, Co.Laois (Section 2)**

**Title**

**TEMPORARY TRAFFIC MANAGEMENT PLAN DIVERSION ROUTE**

Drawing No C24028\_31\_002 Rev 0