



Date: 18/06/2020 **Author:** THM/JC **Project:** TM 1169

Comments:

Traffic Management Plan for stop & go to enable Datum Monitoring Ireland with works at Portlaoise in Co. Laois.



Manifest
18 x Cone
4 x WK 001 Roadworks Ahead
2 x P 010 End
2 x RUS 001 Keep Left
2 x RUS 002 Keep Right
2 x RUS 060 Stop and Go Disk - STOP
2 x RUS 061 Stop and Go Disk - GO
2 x WK 061 Flagman Ahead
2 x WK 095 Stop Here on Red
1 x W 185 Barrier Board

Legend
Cone
Lat. Safety Zone
Long. Safety Zone
Taper
Works Area

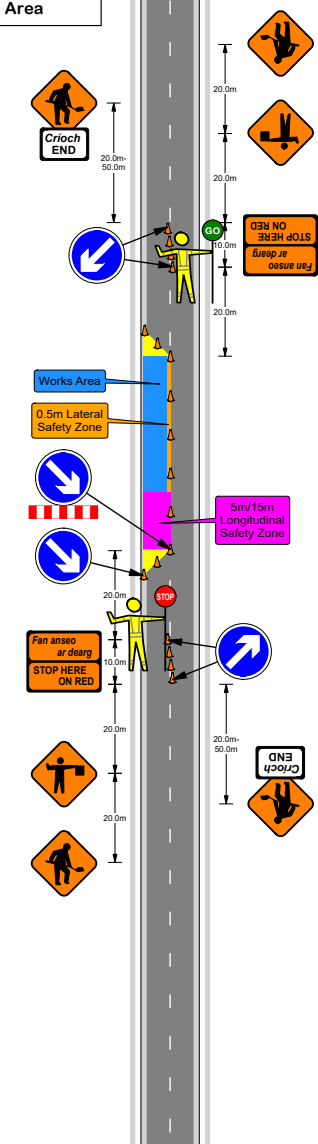


Table 1.1.1.3: Minimum Design Parameters for Level 1(iii) Roads Single Carriageway of 50km/h

Design Parameter	Type A > 12 hours	Type B < 12 hours	Type C < 15 mins
Advance Warning Signage			
Sign Size (mm)	600	600	-
Sign Visibility (m)	50	50	50
Number of Signs	2	2	-
Cumulative Distance (m)	40	40	-
Distance between Advance Warning Signs (m)	20	20	-
Taper			
Lane Taper Rate ^A	1 in 5	1 in 5	-
Hard Shoulder Taper Rate ^A	-	-	-
Cones			
Cone Height (mm)	750	750	-
Taper Spacing (m) ^B	3	3	-
Longitudinal Spacing (m) ^B	3	3	-
Lamps (unlit areas only)			
Taper Spacing (m)	6	6	-
Longitudinal Spacing (m)	6	6	-
Safety Zones			
Longitudinal (m)	5	5	-
Lateral (m)	0.5	0.5	-
Lanes			
Lane Width (m) ^C	3 (2.5)	3 (2.5)	-
Two-way Roadway Width (m)	5	5	-

Notes:
 A. 45 taper is required at shuttle controlled layouts with cones at 1m centres
 B. Cone spacing is the maximum permitted. Where geometry or any other site-specific reason dictates the spacing shall be reduced accordingly.
 C. The optimum lane width for all classes of vehicles is 3.3m. This may be reduced to a minimum of 3m. Below this, HGVs and buses must be marshalled past the works. The absolute minimum lane width, if only cars and light vehicles are present, is 2.5m. See Section 0.4.3.4.

