

# MUNICIPAL DISTRICT SUMMARY REPORT

PRESENTED TO

**National Broadband Ireland**



DATE

March 2023

## DOCUMENT CONTROL SHEET

<b>Client</b>	National Broadband Ireland
<b>Project Title</b>	Upgrade/Installation of Broadband Network at DA185 Municipal District of Borris in Ossory - Mountmellick
<b>Document Title</b>	Drop Build Summary Report

Rev.	Status	Author(s)	Reviewed by	Approved by	Issue Date
1.0	INTERNAL DRAFT	Ciara Barry-Hannon <i>Ecologist</i>			
2.0	DRAFT FOR CLIENT REVIEW	Ciara Barry-Hannon <i>Ecologist</i>			
3.0	FINAL	Ciara Barry-Hannon <i>Ecologist</i>	Nicola Byrne <i>Ecologist</i>	Lizy Tinsley <i>Technical Director</i>	10/03/2023

## REPORT LIMITATIONS

Synergy Environmental Ltd. t/a Enviroguide Consulting (hereafter referred to as “Enviroguide”) has prepared this report for the sole use of National Broadband Ireland in accordance with the Agreement under which our services were performed. No other warranty, expressed or implied, is made as to the professional advice included in this Report or any other services provided by Enviroguide.

The information contained in this Report is based upon information provided by others and upon the assumption that all relevant information has been provided by those parties from whom it has been requested and that such information is accurate. Information obtained by Enviroguide has not been independently verified by Enviroguide, unless otherwise stated in the Report.

The methodology adopted and the sources of information used by Enviroguide in providing its services are outlined in this Report.

The work described in this Report is based on the conditions encountered and the information available during the said period of time. The scope of this Report and the services are accordingly factually limited by these circumstances.

All work carried out in preparing this report has used, and is based upon, Enviroguide's professional knowledge and understanding of the current relevant national legislation. Future changes in applicable legislation may cause the opinion, advice, recommendations or conclusions set-out in this report to become inappropriate or incorrect. However, in giving its opinions, advice, recommendations and conclusions, Enviroguide has considered pending changes to environmental legislation and regulations of which it is currently aware. Following delivery of this report, Enviroguide will have no obligation to advise the client of any such changes, or of their repercussions.

Enviroguide disclaim any undertaking or obligation to advise any person of any change in any matter affecting the Report, which may come or be brought to Enviroguide's attention after the date of the Report.

Certain statements made in the Report that are not historical facts may constitute estimates, projections or other forward-looking statements and even though they are based on reasonable assumptions as of the date of the Report, such forward-looking statements by their nature involve risks and uncertainties that could cause actual results to differ materially from the results predicted. Enviroguide specifically does not guarantee or warrant any estimate or projections contained in this Report.

Unless otherwise stated in this Report, the assessments made assume that the site and facilities will continue to be used for their current or stated proposed purpose without significant changes.

The content of this report represents the professional opinion of experienced environmental consultants. Enviroguide does not provide legal advice or an accounting interpretation of liabilities, contingent liabilities or provisions.

If the scope of work includes subsurface investigation such as boreholes, trial pits and laboratory testing of samples collected from the subsurface or other areas of the site, and environmental or engineering interpretation of such information, attention is drawn to the fact that special risks occur whenever engineering, environmental and related disciplines are applied to identify subsurface conditions. Even a comprehensive sampling and testing programme implemented in accordance with best practice and a professional standard of care may fail to detect certain conditions. Laboratory testing results are not independently verified by Enviroguide and have been assumed to be accurate. The environmental, ecological, geological, geotechnical, geochemical and hydrogeological conditions that Enviroguide interprets to exist between sampling points may differ from those that actually exist. Passage of time, natural occurrences and activities on and/or near the site may substantially alter encountered conditions.

Copyright © This Report is the copyright of Enviroguide Consulting Ltd. any unauthorised reproduction or usage by any person other than the addressee is strictly prohibited.

## CONTENTS

<b>1</b>	<b>OVERVIEW</b>	<b>3</b>
1.1	Project Overview	3
1.2	Identification of Relevant European sites	3
1.3	Identification of Potential Impacts on European sites	9
1.4	Intersecting features within European sites in the Municipal District of Borris in Ossory - Mountmellick	10
<b>2</b>	<b>CONCLUDING STATEMENT</b>	<b>13</b>

### LIST OF TABLES

Table 1 Drop Poles Within The Municipal District Of Borris In Ossory - Mountmellick And European Sites .....	11
--	----

### LIST OF FIGURES

Figure 1 Drop Poles In The Municipal District Of Borris In Ossory - Mountmellick.....	5
Figure 2 Drop Poles In The Municipal District Of Borris In Ossory - Mountmellick.....	5
Figure 3 Drop Poles In The Municipal District Of Borris In Ossory - Mountmellick.....	6
Figure 4 Drop Poles In The Municipal District Of Borris In Ossory - Mountmellick.....	6
Figure 5 Drop Poles In The Municipal District Of Borris In Ossory - Mountmellick.....	7
Figure 6 Drop Poles In The Municipal District Of Borris In Ossory - Mountmellick.....	7
Figure 7 Drop Poles In The Municipal District Of Borris In Ossory - Mountmellick.....	8
Figure 8 Drop Poles In The Municipal District Of Borris In Ossory - Mountmellick.....	8
Figure 9 Drop Poles In The Municipal District Of Borris In Ossory - Mountmellick.....	9

# 1 OVERVIEW

## 1.1 Project Overview

This report is a summary of the Appropriate Assessment Screening Report undertaken on the proposed deployment of broadband infrastructure for Design Area (DA) 185, Mount Bolus. This summary report focuses specifically on Drop Network Build poles which National Broadband Ireland (NBI) proposes to install on public land as an integral part of the implementation of the National Broadband Plan (NBP). This report summarises the assessment of the installation drop build infrastructure (exclusively utility poles) within the Borris in Ossory - Mountmellick Municipal District (MD) and discusses any likely significant effects that may arise within European sites as a result of the Proposed Project. The assessment of the installation of other items of network build infrastructure (namely chambers and fibre duct) are not discussed in this report. The Proposed Project entails the upgrade and installation of telecommunications infrastructure to buildings in Mount Bolus and surrounding areas, covering a total area of 337 km<sup>2</sup>.

Network build infrastructure is defined by NBI as items of infrastructure which are integral to the deployment of broadband infrastructure throughout the state. Network build poles are distinct to drop poles i.e., poles which will not be installed until customers have placed an order for the provision of broadband service through a 3<sup>rd</sup> party reseller.

The installation of Broadband Network Infrastructure at DA185 Mount Bolus, including the Borris in Ossory - Mountmellick Municipal District Area, is comprehensively assessed in Appropriate Assessment (AA) Screening Report ref. DA185\_Mount Bolus\_AA Screening\_Enviroguide. The AA Screening report assesses the likelihood of significant effects arising from the Proposed Development including the installation of both network build and drop poles.

The purpose of this MD summary report and the above-referenced AA Screening Report is to provide information for the relevant competent authority to carry out the screening for AA and other applicable statutory functions including licences issued under Section 254 of the Planning and Development Act 2000 (as amended).

## 1.2 Identification of Relevant European sites

The proposed installation location of the new network build infrastructure is presented in Figure 1-16. The detail of each of the 24 new items of infrastructure to be installed within the MD of Borris in Ossory - Mountmellick is presented in Table 1.

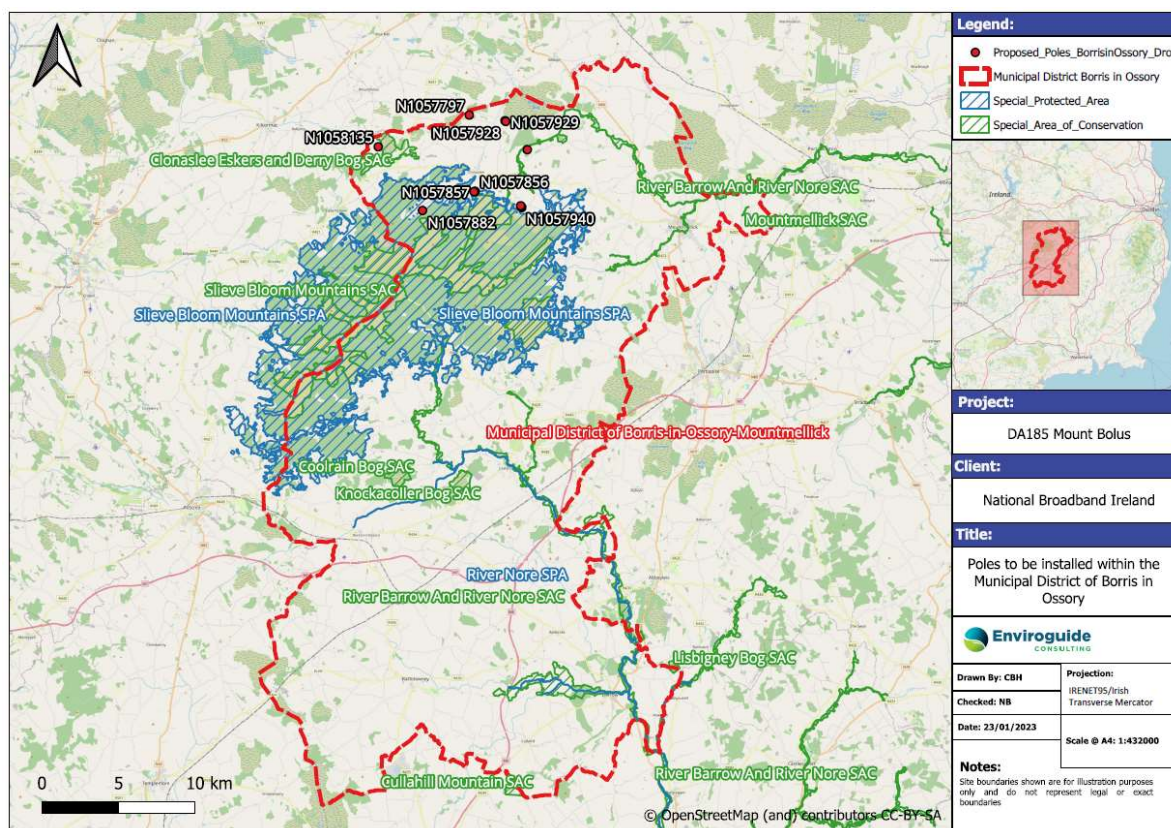
To identify whether any of the items of infrastructure are proposed to be installed within a European site, the following process is undertaken on all DAs:

- Using a Geographic Information System (GIS) the locations of all new proposed items of infrastructure are overlayed onto the locations of all European sites in Ireland and Northern Ireland.
- Analysis is performed using the GIS which will identify each individual feature proposed to be installed within a European site.

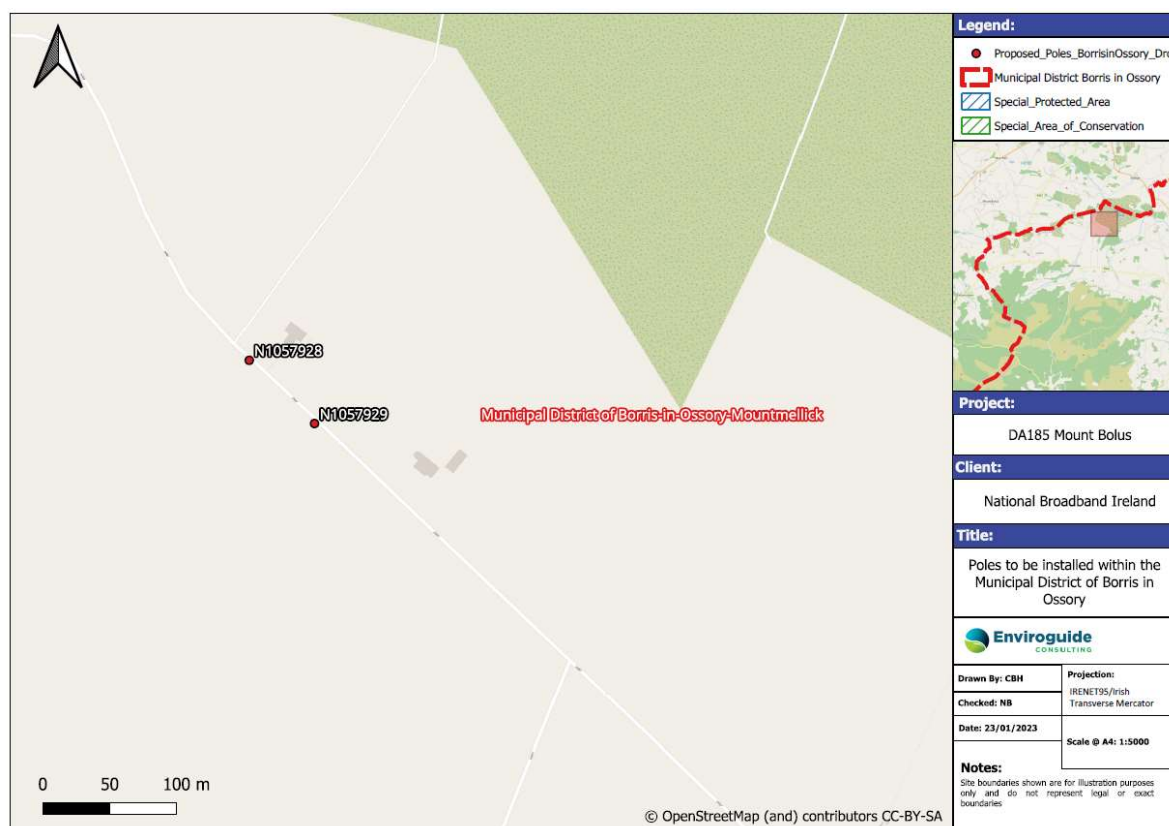
- If individual features are identified, they are recorded and presented on a drawing or series of drawings as required.

Using the described methodology, it was identified that seven of the new items of proposed infrastructure lie within the *Slieve Bloom Mountains SPA (004160)*, while none of the new items lie within the *River Nore SPA (004233)*, *River Barrow And River Nore SAC (002162)*, *Lisbigney Bog SAC (00869)*, *Mountmellick SAC (002141)*, *Cullahill Mountain SAC (00831)*, *Knockacoller Bog SAC (002333)*, *Clonaslee Eskers and Derry Bog SAC (00859)*, *Slieve Bloom Mountains SAC (00412)*, *River Barrow And River Nore SAC (002162)*, and *Coolrain Bog SAC (002332)*.

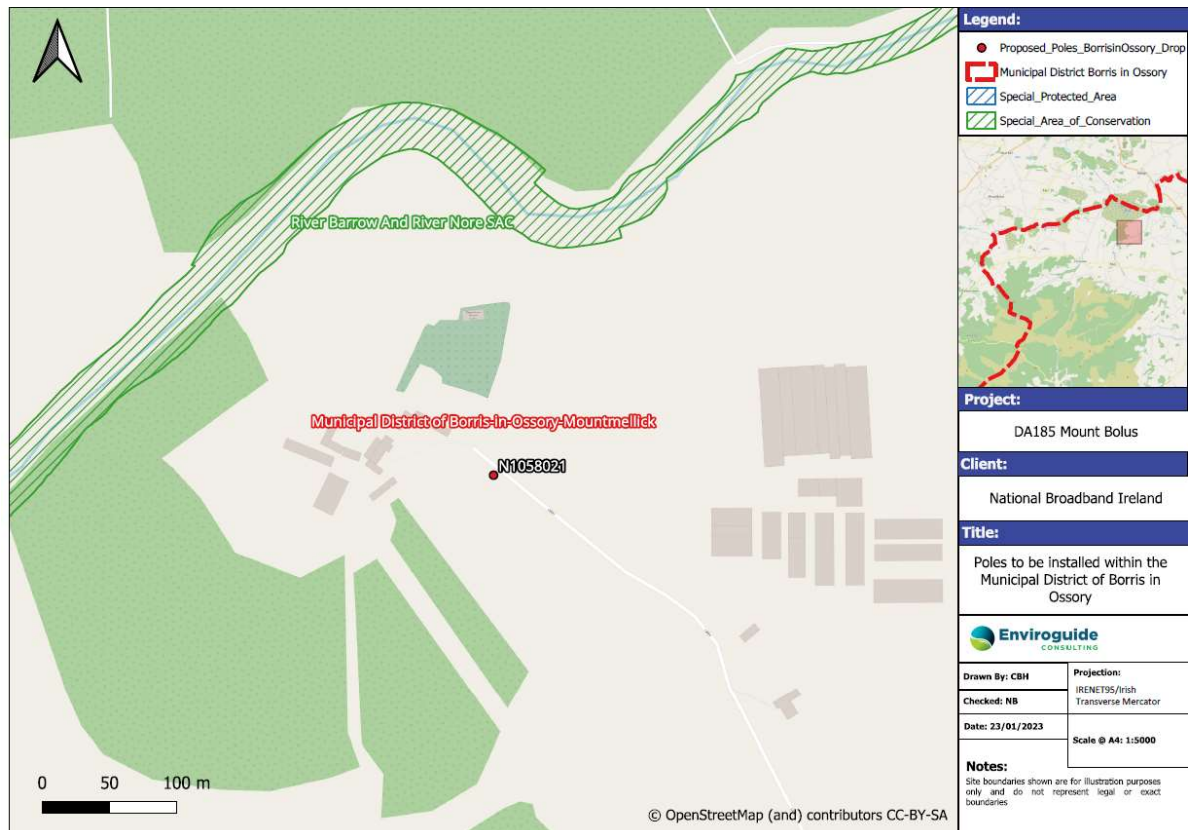




**FIGURE 1 DROP POLES IN THE MUNICIPAL DISTRICT OF BORRIS IN OSSORY - MOUNTMELICK**



**FIGURE 2 DROP POLES IN THE MUNICIPAL DISTRICT OF BORRIS IN OSSORY - MOUNTMELICK**



**FIGURE 3 DROP POLES IN THE MUNICIPAL DISTRICT OF BORRIS IN OSSORY - MOUNTMELICK**



**FIGURE 4 DROP POLES IN THE MUNICIPAL DISTRICT OF BORRIS IN OSSORY - MOUNTMELICK**



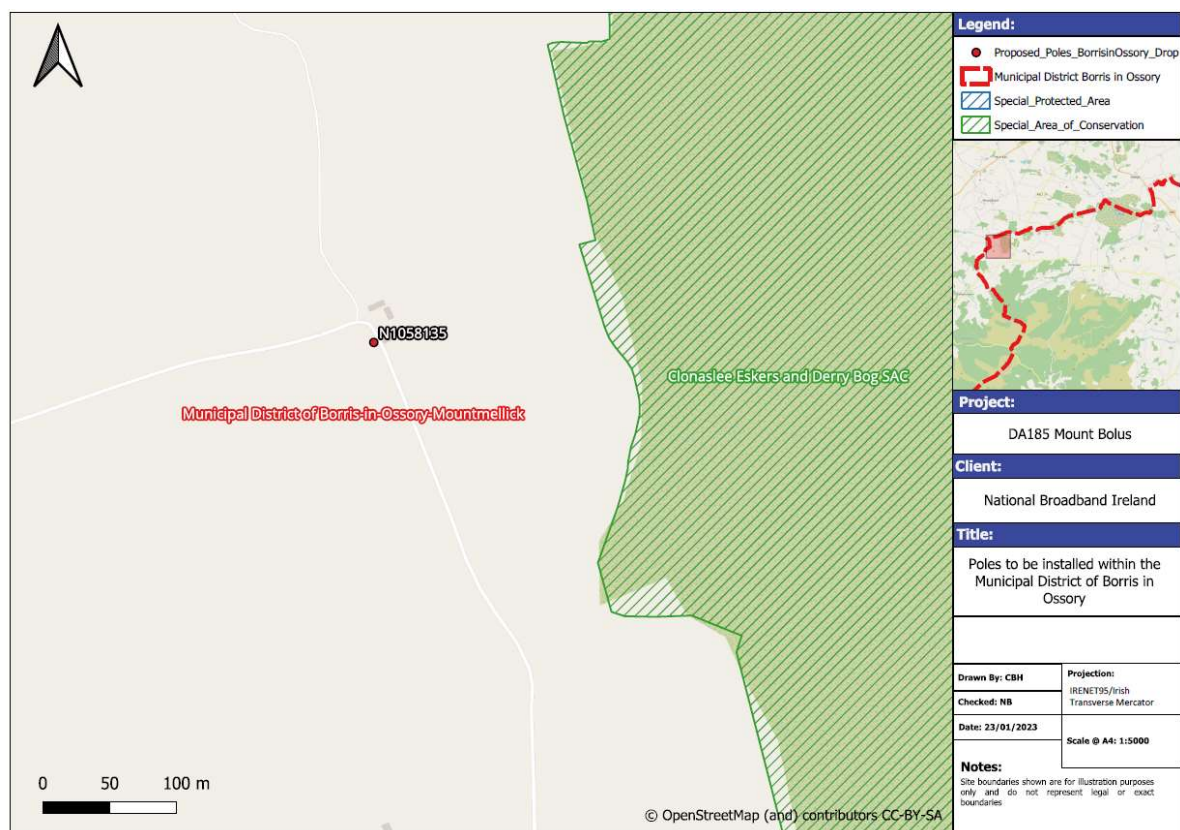


FIGURE 5 DROP POLES IN THE MUNICIPAL DISTRICT OF BORRIS IN OSSORY - MOUNTMELICK

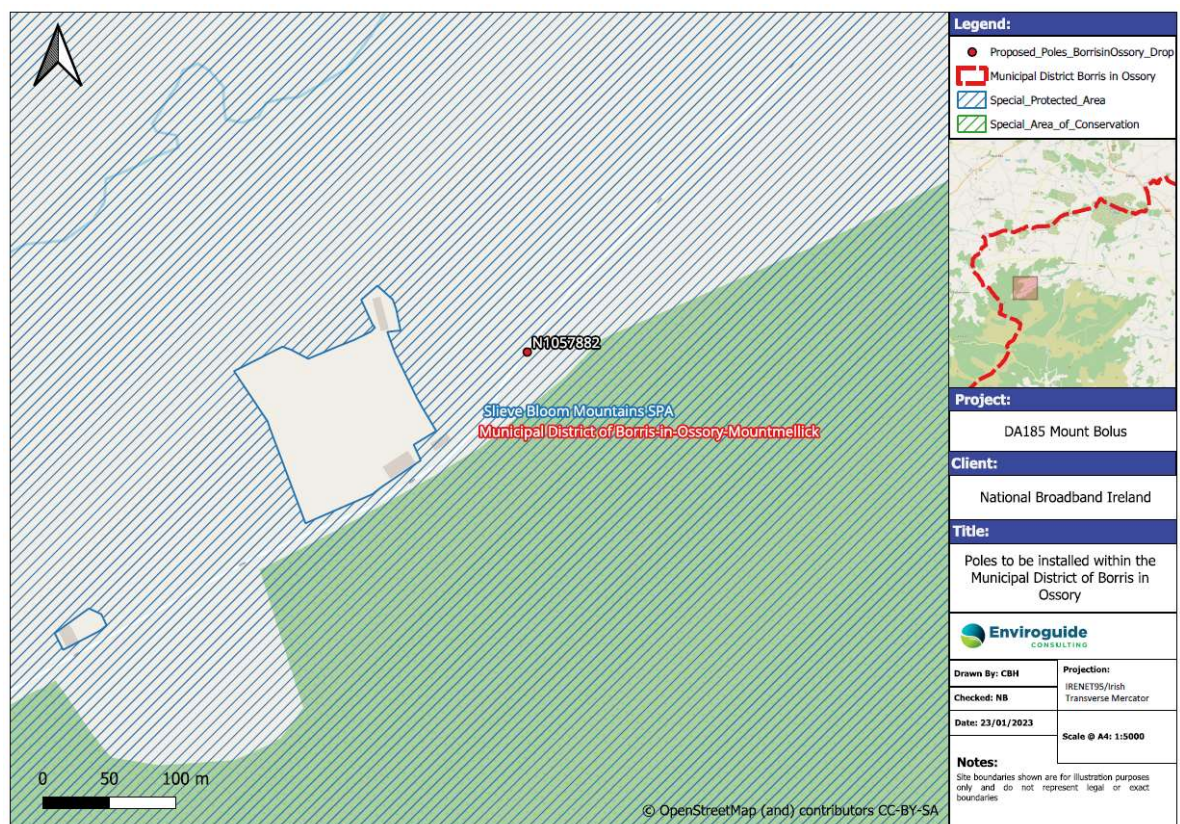
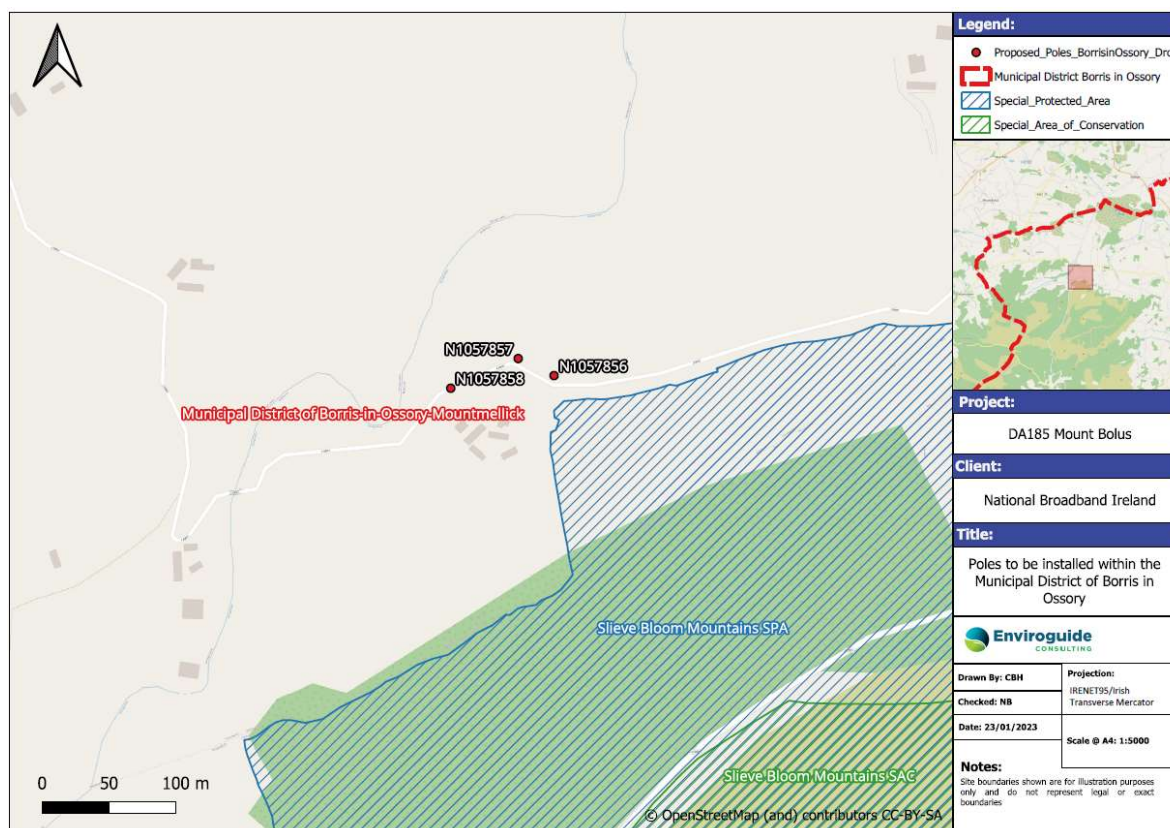
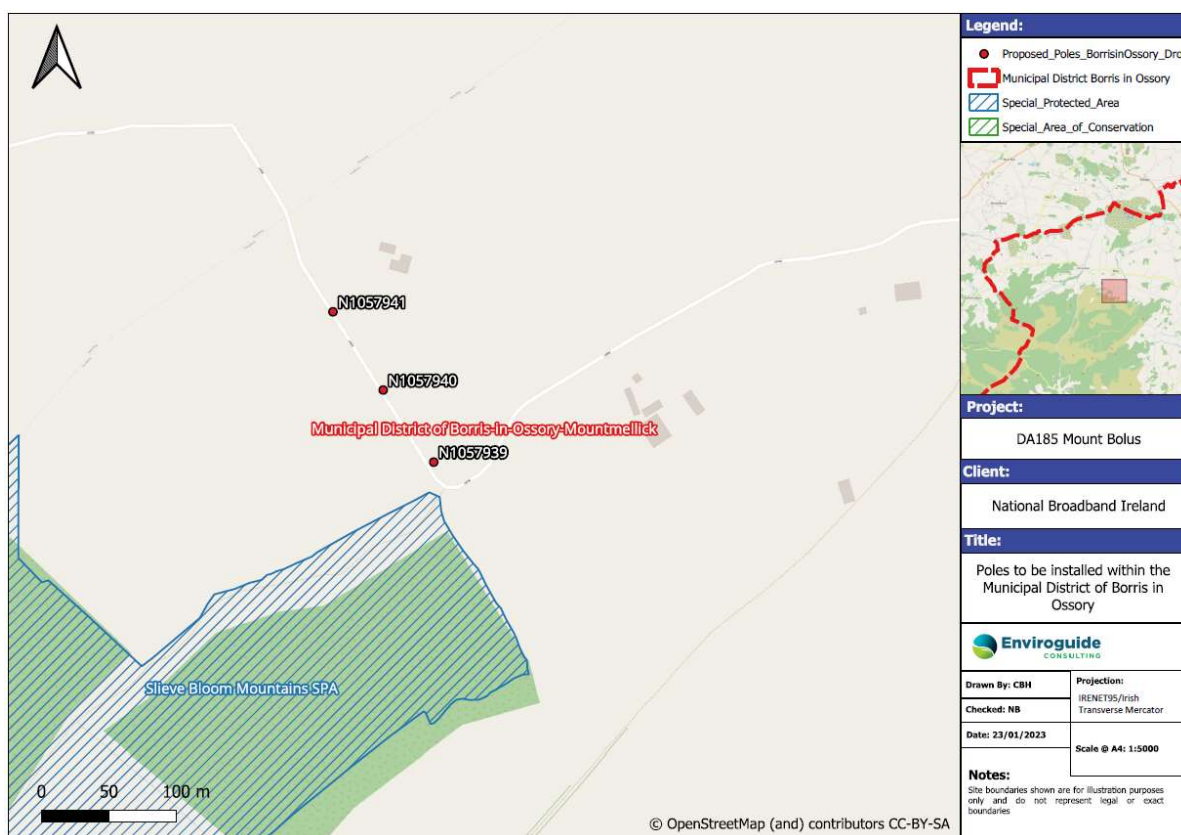


FIGURE 6 DROP POLES IN THE MUNICIPAL DISTRICT OF BORRIS IN OSSORY - MOUNTMELICK





**FIGURE 7 DROP POLES IN THE MUNICIPAL DISTRICT OF BORRIS IN OSSORY - MOUNTMELICK**



**FIGURE 8 DROP POLES IN THE MUNICIPAL DISTRICT OF BORRIS IN OSSORY - MOUNTMELICK**



**FIGURE 9 DROP POLES IN THE MUNICIPAL DISTRICT OF BORRIS IN OSSORY - MOUNTMELICK**

### 1.3 Identification of Potential Impacts on European sites

The AA Screening report prepared for DA185 Mount Bolus reviewed and assessed Information available on the Natura 2000 network of European sites to establish whether the installation and operation of the Proposed Project has the potential to have an impact on any of the conservation objectives of associated sites. The assessment framework used in the preparation of the AA Screening report was taken from the best practice guidelines issued by the European Commission “Assessment of plans and projects significantly affecting Natura 2000 sites – Methodological guidance”.

The installation element of this project involves the erection of new poles, the installation of new underground chambers and underground duct sections. It has been identified that there may be some release of suspended solids into watercourses during such excavations; however, these will be small in nature, extremely localised and of very short duration as all surplus material is removed from the site for compliant waste management.

In addition, the replacement poles being erected may carry the risk of contamination of soil and/or groundwater with creosote which is used as a preservative for telecommunications poles. Creosote is a dense non-aqueous phase liquid (DNAPL) which is not soluble in water. Therefore, the risk associated with its use will be extremely localised by virtue of it not migrating through the watercourse or soil. The impact therefore associated with its use can be deemed imperceptible.

The potential for fugitive dust emissions will be minimal and temporary as each mini excavation required to install a pole will be completed within a short period of time with water used as a dampening down medium in cases of extreme weather.

The AA Screening report prepared for DA185 Mount Bolus considered the potential for significant impacts resulting from the Proposed Project based on a range of indicators, including:

- Habitat loss or alteration ;
- Habitat/species fragmentation ;
- Disturbance and/or displacement of species;
- Changes in population density; and
- Changes in water quality and resource.

It was deemed by the AA Screening Report that the Proposed Project will not have a significant adverse effect on the Conservation Objectives of: Slieve Bloom Mountains SPA (004160), River Nore SPA (004233), River Barrow And River Nore SAC (002162), Lisbigney Bog SAC (00869), Mountmellick SAC (002141), Cullahill Mountain SAC (00831), Knockacoller Bog SAC (002333), Clonaslee Eskers and Derry Bog SAC (00859), Slieve Bloom Mountains SAC (00412), River Barrow and River Nore SAC (002162), and Coolrain Bog SAC (002332).

#### **1.4 Intersecting features within European sites in the Municipal District of Borris in Ossory - Mountmellick**

The Proposed Project route passes adjacent to, intersects with or contains the following: the *Slieve Bloom Mountains SPA (004160)*, *River Nore SPA (004233)*, *River Barrow And River Nore SAC (002162)*, *Lisbigney Bog SAC (00869)*, *Mountmellick SAC (002141)*, *Cullahill Mountain SAC (00831)*, *Knockacoller Bog SAC (002333)*, *Clonaslee Eskers and Derry Bog SAC (00859)*, *Slieve Bloom Mountains SAC (00412)*, *River Barrow And River Nore SAC (002162)*, and *Coolrain Bog SAC (002332)*.

In the case of the MD of Borris in Ossory - Mountmellick, none of the new items of proposed infrastructure will occur within any of the aforementioned European sites, with the exception of the *Slieve Bloom Mountains SPA (004160)*, within which seven of the new items of proposed infrastructure will occur.

Each installation location was surveyed as part of the pre-build design process. Table 1 identifies each individual item of equipment within the MD of Borris in Ossory - Mountmellick and describes the proposed installation locations and whether the proposed feature is to be installed within a European site.

Table 1 and Figures 1 to 16 demonstrate that all items of infrastructure for the Proposed Project within the MD of Borris in Ossory - Mountmellick will be installed along the existing road network, in locations that consist primarily of roadside verges.

**TABLE 1 DROP POLES WITHIN THE MUNICIPAL DISTRICT OF *Borris in Ossory - Mountmellick* AND EUROPEAN SITES**

Barcode/Duct Label	Infrastructure Type	Location - Public	Site Name
N1057856	Utility Pole	Verge	Proposed infrastructure not located within a European site in the Municipal District of Borris in Ossory - Mountmellick
N1057857	Utility Pole	Verge	Proposed infrastructure not located within a European site in the Municipal District of Borris in Ossory - Mountmellick
N1057858	Utility Pole	Verge	Proposed infrastructure not located within a European site in the Municipal District of Borris in Ossory - Mountmellick
N1058135	Utility Pole	Verge	Proposed infrastructure not located within a European site in the Municipal District of Borris in Ossory - Mountmellick
N1057797	Utility Pole	Verge	Proposed infrastructure not located within a European site in the Municipal District of Borris in Ossory - Mountmellick
N1058021	Utility Pole	Verge	Proposed infrastructure not located within a European site in the Municipal District of Borris in Ossory - Mountmellick
N1057882	Utility Pole	Verge	Proposed infrastructure not located within a European site in the Municipal District of Borris in Ossory - Mountmellick
N1057928	Utility Pole	Verge	Proposed infrastructure not located within a European site in the Municipal District of Borris in Ossory - Mountmellick
N1057929	Utility Pole	Verge	Proposed infrastructure not located within a European site in the Municipal District of Borris in Ossory - Mountmellick
N1057939	Utility Pole	Verge	Proposed infrastructure not located within a European site in the Municipal District of Borris in Ossory - Mountmellick
N1057940	Utility Pole	Verge	Proposed infrastructure not located within a European site in the Municipal District of Borris in Ossory - Mountmellick
N1057941	Utility Pole	Verge	Proposed infrastructure not located within a European site in the Municipal District of Borris in Ossory - Mountmellick
N1057856	Utility Pole	Verge	Proposed infrastructure not located within a European site in the Municipal District of Borris in Ossory - Mountmellick
N1057857	Utility Pole	Verge	Proposed infrastructure not located within a European site in the Municipal District of Borris in Ossory - Mountmellick



Barcode/Duct Label	Infrastructure Type	Location - Public	Site Name
N1057858	Utility Pole	Verge	Proposed infrastructure not located within a European site in the Municipal District of Borris in Ossory - Mountmellick
N1058135	Utility Pole	Verge	Proposed infrastructure not located within a European site in the Municipal District of Borris in Ossory - Mountmellick
N1057797	Utility Pole	Verge	Proposed infrastructure not located within a European site in the Municipal District of Borris in Ossory - Mountmellick
N1058021	Utility Pole	Verge	Proposed infrastructure not located within a European site in the Municipal District of Borris in Ossory - Mountmellick
N1057882	Utility Pole	Verge	Proposed infrastructure not located within a European site in the Municipal District of Borris in Ossory - Mountmellick
N1057928	Utility Pole	Verge	Proposed infrastructure not located within a European site in the Municipal District of Borris in Ossory - Mountmellick
N1057929	Utility Pole	Verge	Proposed infrastructure not located within a European site in the Municipal District of Borris in Ossory - Mountmellick
N1057939	Utility Pole	Verge	Proposed infrastructure not located within a European site in the Municipal District of Borris in Ossory - Mountmellick
N1057940	Utility Pole	Verge	Proposed infrastructure not located within a European site in the Municipal District of Borris in Ossory - Mountmellick
N1057941	Utility Pole	Verge	Proposed infrastructure not located within a European site in the Municipal District of Borris in Ossory - Mountmellick

## 2 CONCLUDING STATEMENT

The Proposed Project consisting of the installation of Broadband Network at DA185 Mount Bolus, has been assessed taking into account:

- The nature, size and location of the proposed activities and possible impacts arising from the installation activities.
- The qualifying interests and conservation objectives of the European sites.
- The potential for in-combination effects arising from other plans and projects.

In conclusion, upon the examination, analysis and evaluation of the relevant information and applying the precautionary principle, it is concluded by the authors of this report that, on the basis of objective information; the possibility **can be excluded** that the Proposed Project will have a likely significant effect on any of the European sites listed below:

- **Slieve Bloom Mountains SPA (004160)**
- **River Nore SPA (004233)**
- **River Barrow and River Nore SAC (002162)**
- **Lisbigney Bog SAC (00869)**
- **Mountmellick SAC (002141)**
- **Cullahill Mountain SAC (00831)**
- **Knockacoller Bog SAC (002333)**
- **Clonaslee Eskers and Derry Bog SAC (00859)**
- **Slieve Bloom Mountains SAC (00412)**
- **River Barrow and River Nore SAC (002162)**
- **Coolrain Bog SAC (002332)**

Thus, it can be concluded on the basis of the results of Stage 1 of the Appropriate Assessment process that there is no requirement to proceed to Stage 2 of said process; and the preparation of a Natura Impact Statement (NIS) is not required.



---

**Head Office**

3D, Core C, Block 71, The Plaza, Park West, Dublin 12, D12F9TN, Ireland.

Tel: +353 1 565 4730

Email: [info@enviroguide.ie](mailto:info@enviroguide.ie)

**Southwest Regional Office**

19 Henry Street, Kenmare, County Kerry, V93 CVH0, Ireland.

Tel: +353 646 641932

Email: [info@enviroguide.ie](mailto:info@enviroguide.ie)

**Southeast Regional Office**

M10 Wexford Enterprise Centre, Strandfield Business Park, Rosslare Rd, Strandfield, Kerlogue, Co. Wexford, Y35 W5RD, Ireland.

Tel: +353 1 565 4730

Email: [info@enviroguide.ie](mailto:info@enviroguide.ie)