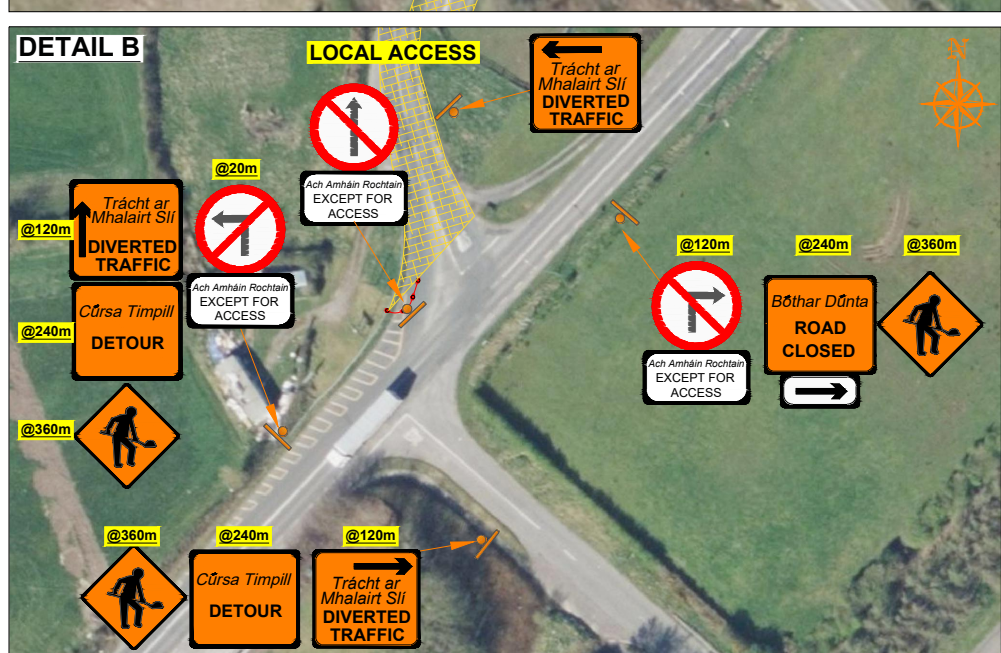
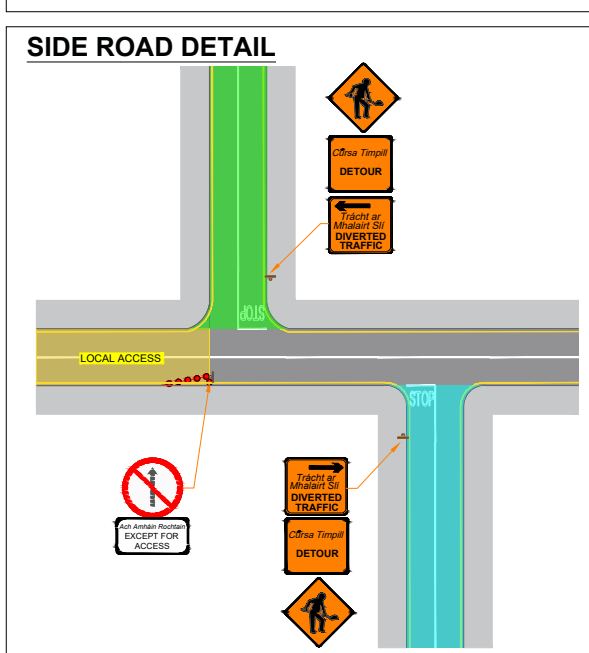
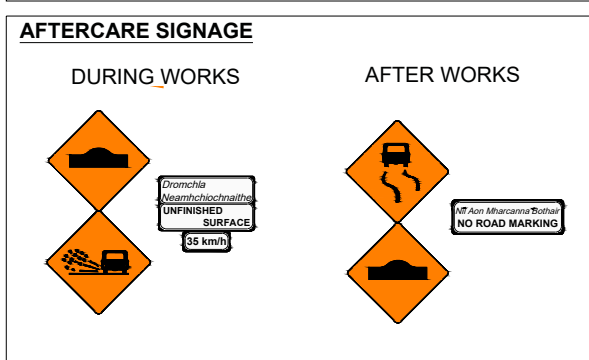
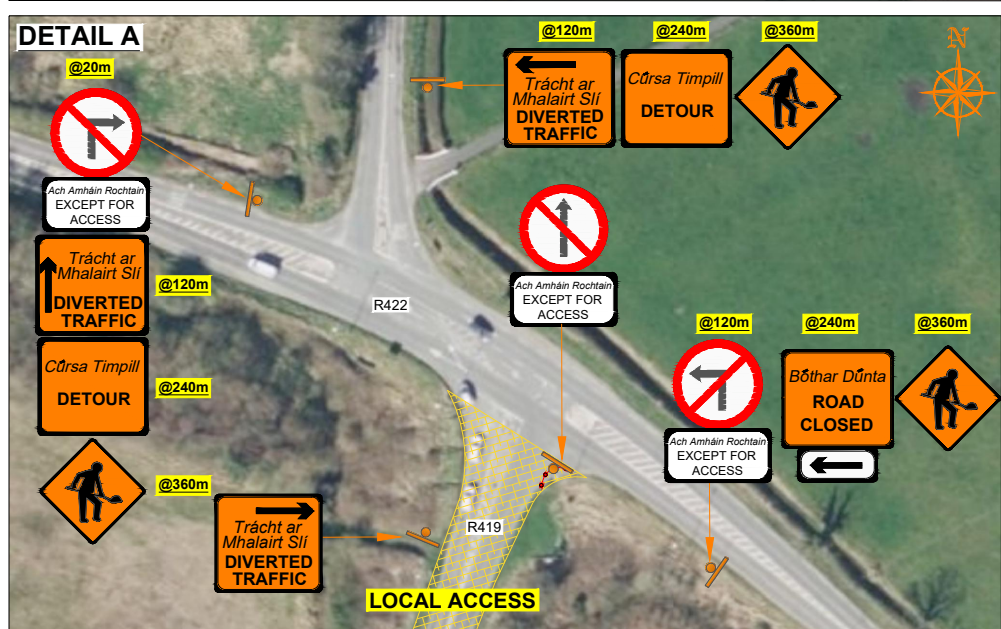


NO TIP ZONE MINIMUM CLEARANCE

Nominal phase-to-phase voltage of overhead line	Minimum lateral clearance in metres
LV conductors	1.0
10kV, 20kV and 38kV	3.0
110kV	4.5
220kV	6.0
400kV	8.0



ROAD CONTROL

Copyright Notes:
This drawing is the property of Road Control Services Ltd. The design information contained herein is strictly confidential. This document is not to be used, reproduced, disclosed or circulated in whole or in part without prior written consent.

CLIENT

CARROLL QUARRY LTD

DESIGN PARAMETERS

Advance Warning Signage	600mm
Sign size	90m
Sign Visibility	3
Number of Signs	360m
Cumulative Distance	120m
Distance between Advance Warning Signs	
Taper	
Lane Taper Rate	N/A
Hard Shoulder Taper Rate	N/A

Speed Limit	80
Road Classification	2(i) <12hours
Cones	750mm
Cone Height	3m
Taper Spacing	12m
Longitudinal Spacing	
Safety Zones	
Longitudinal	45m
Lateral	1.2m
Lanes	
Lane Width	3.0m

- LEGEND**
- Works Area
 - Traffic sign
 - Traffic cones
 - Diversion Route A
 - Diversion Route B
 - Diversion Route C
 - Local Access

GENERAL NOTES

- All information contained in this drawing (including digital data) should be checked and verified prior to any stage of construction;
- All works are to be carried out in accordance with local authority requirements and are to be included in the site-specific safety & health plan;
- Site inspections and maintenance of the traffic management layout is to be agreed with local authority to ensure the safety and integrity of the design;
- Contractor to carry out a site risk assessment prior to the installation of any traffic management plan to ensure that conditions reflect those considered for design post submission;
- Contractor shall be responsible for the provision of ramp access at any change in road surface level where traffic runs on a temporary surface, and for pedestrian/cycle ramps where footpath/cycle-ways have a level discontinuity as per result of the works.

Rev	Date	Details	Drn	Chk	App	Drn	DJ
01	22.07.24	DIVERSION DETAILS	DJ	SD	DH	Chk	MA
						Date	13-06-2024
						Scale	NTS @A3
						Stage	CONSTRUCTION

Project	R-419-43 Alley Cross to Colbanagher, Co. Laois
Title	TEMPORARY TRAFFIC MANAGEMENT PLAN DIVERSION ROUTE
Drawing No	C24028_39_001
Rev	1