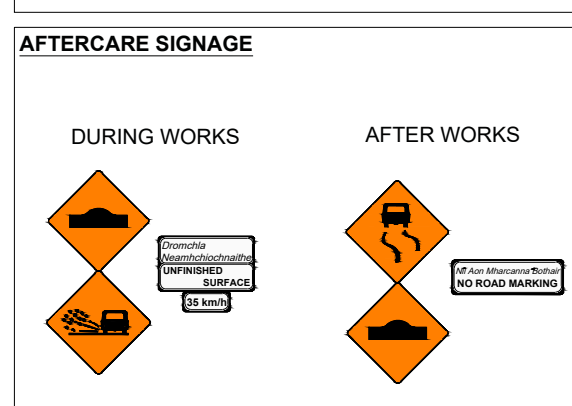
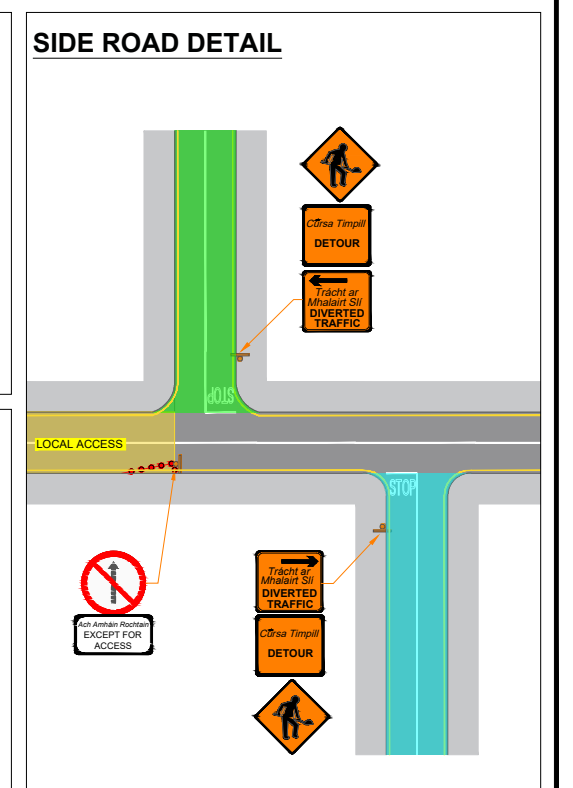


NO TIP ZONE MINIMUM CLEARANCE

Nominal phase-to-phase voltage of overhead line	Minimum lateral clearance in metres
LV conductors	1.0
10kV, 20kV and 38kV	3.0
110kV	4.5
220kV	6.0
400kV	8.0



ROAD CONTROL

Copyright Notes:
This drawing is the property of Road Control Services Ltd. The design information contained herein is strictly confidential. This document is not to be used, reproduced, disclosed or circulated in whole or in part without prior written consent.

CLIENT

CARROLL QUARRY LTD

DESIGN PARAMETERS

Advance Warning Signage	
Sign size	600mm
Sign Visibility	90m
Number of Signs	3
Cumulative Distance	360m
Distance between Advance Warning Signs	120m
Taper	
Lane Taper Rate	N/A
Hard Shoulder Taper Rate	N/A

Speed Limit	80
Road Classification	2(i) Type B <12hours
Cones	
Cone Height	750mm
Taper Spacing	3m
Longitudinal Spacing	12m
Safety Zones	
Longitudinal	45m
Lateral	1.2m
Lanes	
Lane Width	3.0m

LEGEND

- Works Area
- Traffic sign
- Traffic cones
- Local Access
- Diversion Route A
- Diversion Route B

GENERAL NOTES

- All information contained in this drawing (including digital data) should be checked and verified prior to any stage of construction;
- All works are to be carried out in accordance with local authority requirements and are to be included in the site-specific safety & health plan;
- Site inspections and maintenance of the traffic management layout is to be agreed with local authority to ensure the safety and integrity of the design;
- Contractor to carry out a site risk assessment prior to the installation of any traffic management plan to ensure that conditions reflect those considered for design post submission;
- Contractor shall be responsible for the provision of ramp access at any change in road surface level where traffic runs on a temporary surface, and for pedestrian/cycle ramps where footpath/cycle-ways have a level discontinuity as per result of the works.

Rev	Date	Details	Drn	Chk	App	Drn	DJ
						Chk	MA
						App	DH
						Date	12-06-2023
						Scale	NTS
						Stage	CONSTRUCTION

Project	L7178-0 Treascon Pine Villa, Co. Laois
Title	TEMPORARY TRAFFIC MANAGEMENT PLAN DIVERSION ROUTE L7178-0, TREASCON - PINE VILLA
Drawing No	C24028_35_001
Rev	0