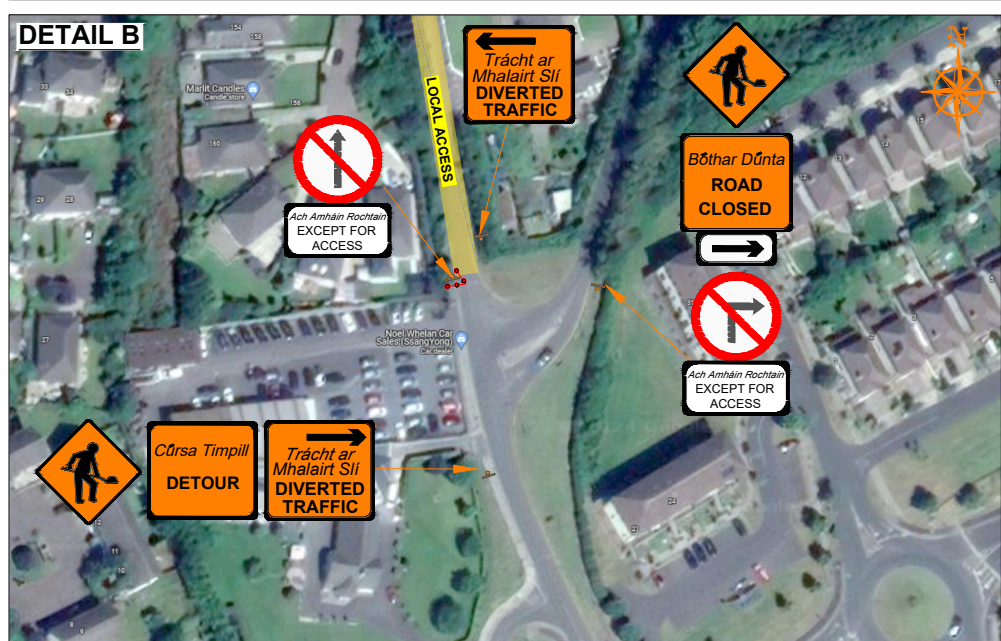
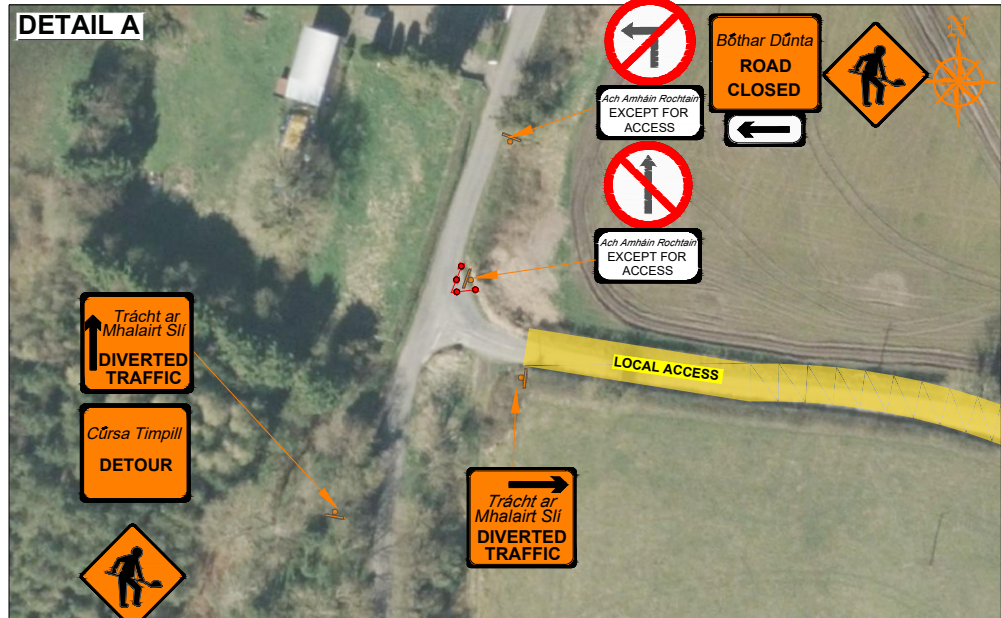
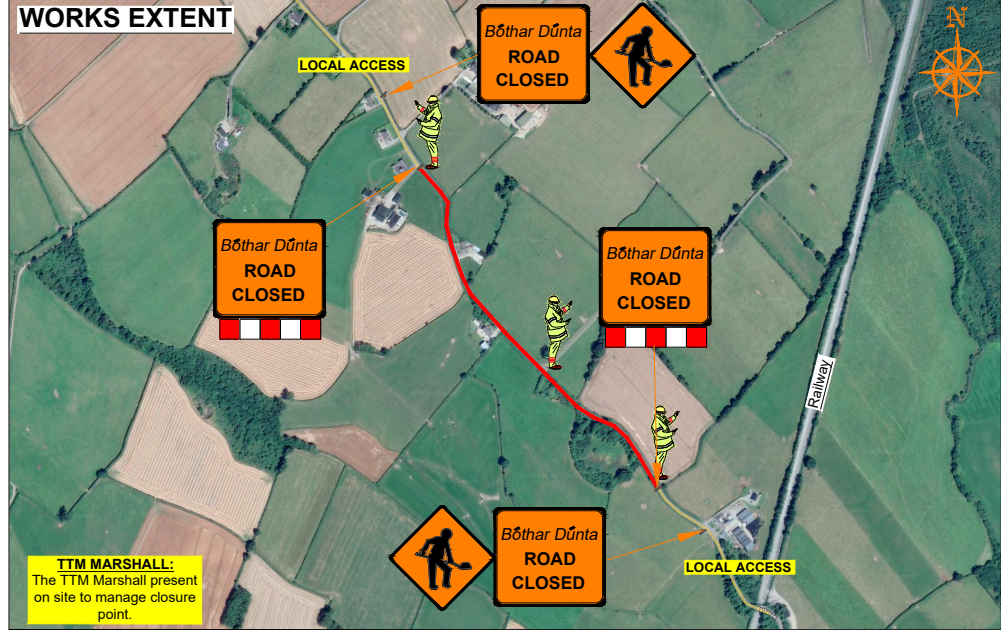
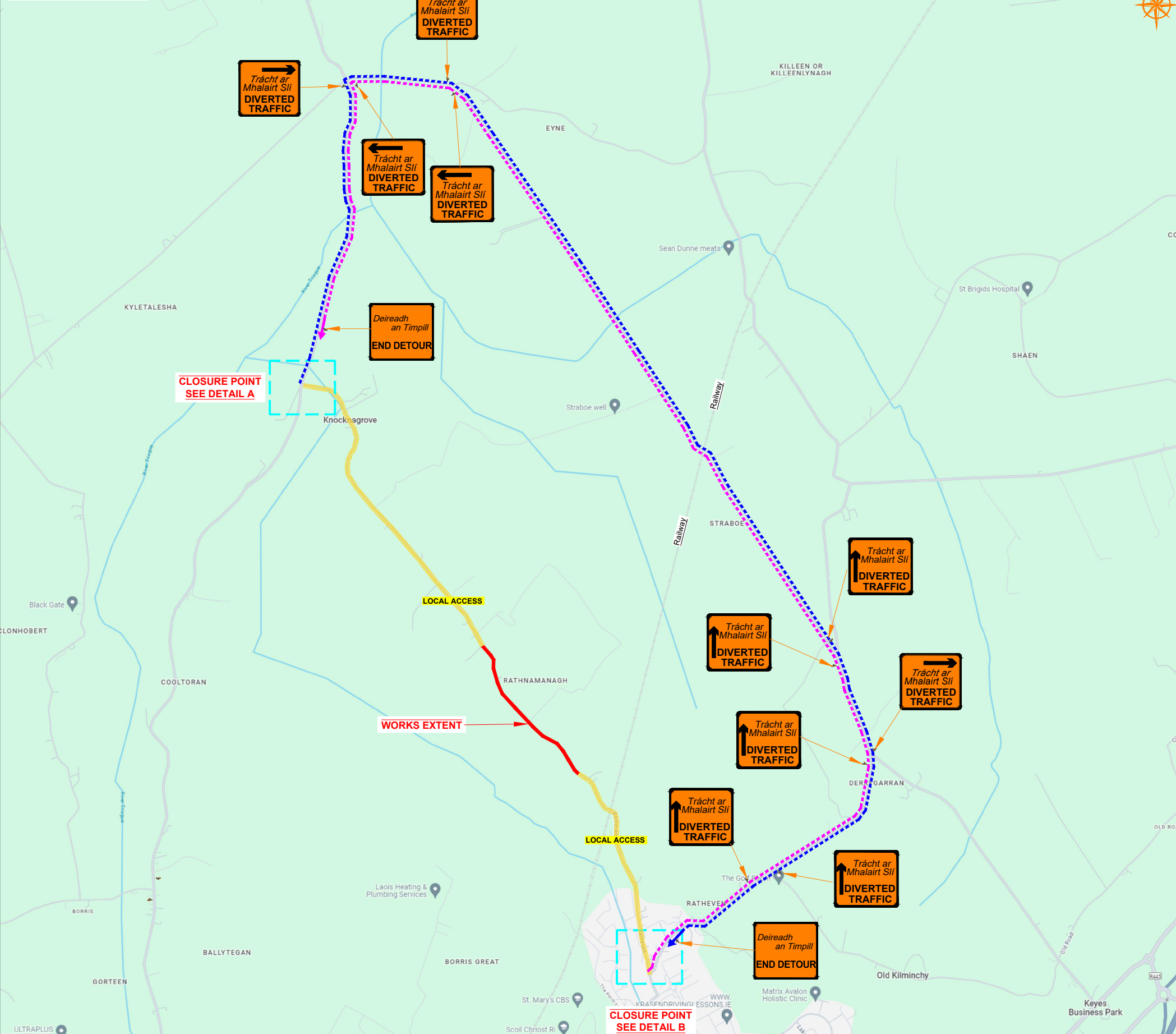


L-6136 Rathnamanagh, Co. Laois
DIVERSION ROUTE



ROAD CONTROL

Copyright Notes:
This drawing is the property of Road Control Services Ltd. The design information contained herein is strictly confidential. This document is not to be used, reproduced, disclosed or circulated in whole or in part without prior written consent.

CLIENT

CARROLL QUARRY LTD

DESIGN PARAMETERS

Advance Warning Signage	Sign size 600mm
	Sign Visibility 90m
	Number of Signs 3
	Cumulative Distance 360m
	Distance between Advance Warning Signs 120m
Taper	Lane Taper Rate N/A
	Hard Shoulder Taper Rate N/A

Speed Limit

Road Classification Type B 2(i) <12hours

Cones	Cone Height 750mm
	Taper Spacing 3m
	Longitudinal Spacing 12m
Safety Zones	Longitudinal 45m
	Lateral 1.2m
Lanes	Lane Width 3.0m

LEGEND

- Works in Place
- Local Access
- Traffic sign
- Traffic cones
- Diversion Route A
- Diversion Route B

GENERAL NOTES

- 1) All information contained in this drawing (including digital data) should be checked and verified prior to any stage of construction;
- 2) All works are to be carried out in accordance with local authority requirements and are to be included in the site-specific safety & health plan;
- 3) Site inspections and maintenance of the traffic management layout is to be agreed with local authority to ensure the safety and integrity of the design;
- 4) Contractor to carry out a site risk assessment prior to the installation of any traffic management plan to ensure that conditions reflect those considered for design post submission;
- 5) Contractor shall be responsible for the provision of ramp access at any change in road surface level where traffic runs on a temporary surface, and for pedestrian/cycle ramps where footpath/bicycle-ways have a level discontinuity as per result of the works.

Rev	Date	Details	Drm	Chk	App	Drm	BC
01	05.06.24	Diversion Route Amendment	BC	MA	DH	Chk	MA
						Date	04-06-2024
						Scale	NTS @A3
						Stage	CONSTRUCTION

Project **L-6136 Rathnamanagh, Co. Laois**

Title **TEMPORARY TRAFFIC MANAGEMENT PLAN Diversion Route**

Drawing No **C24028_16_001** Rev **1**