



LAOIS POPULATION EXPOSURE	
$L_{night}$	Approximate Number of People
50 - 54	1,462
55 - 59	1,289
60 - 64	194
65 - 69	0
> 70	0
$L_{night}$	Approximate Area (km <sup>2</sup> )
> 50	36
> 60	7
> 70	0
$L_{night}$	Approximate Number of Dwellings
> 50	1,263
> 60	100
> 70	0
$L_{night}$	Approximate Number of People
> 50	2,945
> 60	194
> 70	0

#### Noise Zones

##### $L_{night}$ (dB)

45 to 49 (dB)
50 to 54 (dB)
55 to 59 (dB)
60 to 64 (dB)
65 to 69 (dB)
≥ 70 (dB)

##### Road Type

National Road
Regional Road

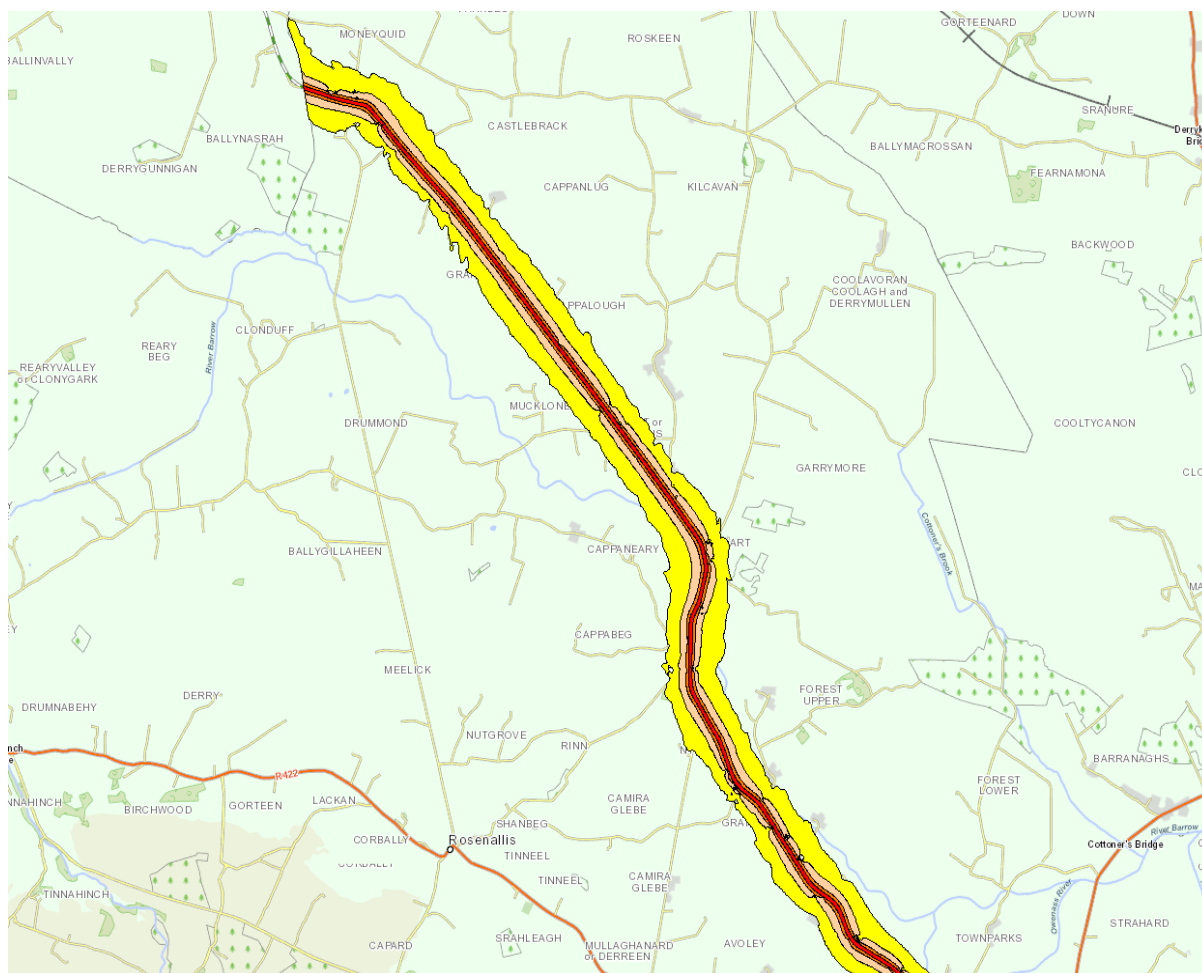


### Ireland Strategic Noise Mapping Round 3 (2017)

Title:  
 $L_{night}$  (dB) - County Laois

Coord. Syst.: TM65 Irish Grid  
Scale: 1:200,000 @ A3  
Date: December 2017

This map shows the weighted predicted annual average night time ( $L_{night}$ ) road traffic noise levels in County Laois. The map has been created in accordance with S.I. No. 540/2006 (the Environmental Noise Regulations) and is a representation of the average environmental noise levels over one complete year. This map forms part of a national noise mapping strategy which can be primarily used as a strategic tool for large scale planning or policy matters and is not suitable for local noise assessments. National and regional roads deemed to be carrying in excess of 3 million vehicle passages per year were assessed in this national study. Ordnance Survey Ireland Licence No. EN0045217 (Digital Contract) © Ordnance Survey Ireland/Government of Ireland



LAOIS POPULATION EXPOSURE	
$L_{night}$	Approximate Number of People
50 - 54	1,462
55 - 59	1,289
60 - 64	194
65 - 69	0
> 70	0
$L_{night}$	Approximate Area ( $km^2$ )
> 50	36
> 60	7
> 70	0
$L_{night}$	Approximate Number of Dwellings
> 50	1,263
> 60	100
> 70	0
$L_{night}$	Approximate Number of People
> 50	2,945
> 60	194
> 70	0

#### Noise Zones

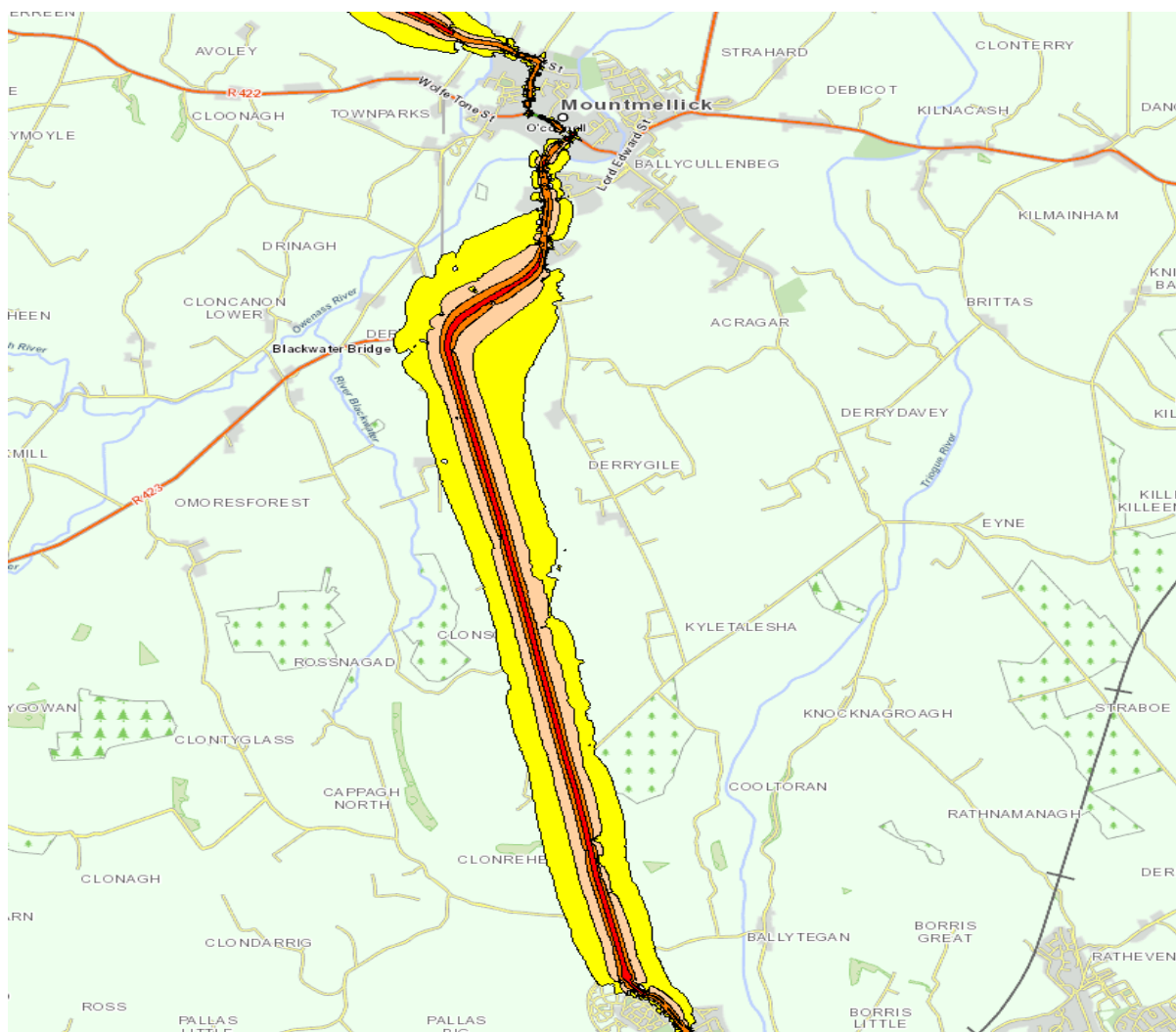
##### $L_{night}$ (dB)

45 to 49 (dB)
50 to 54 (dB)
55 to 59 (dB)
60 to 64 (dB)
65 to 69 (dB)
$\geq 70$ (dB)

##### Road Type

National Road
Regional Road

**N80- Moneyquid to Forest Upper**



LAOIS POPULATION EXPOSURE	
Lnight	Approximate Number of People
50 - 54	1,462
55 - 59	1,289
60 - 64	194
65 - 69	0
> 70	0
Lnight	Approximate Area (km <sup>2</sup> )
> 50	36
> 60	7
> 70	0
Lnight	Approximate Number of Dwellings
> 50	1,263
> 60	100
> 70	0
Lnight	Approximate Number of People
> 50	2,945
> 60	194
> 70	0

#### Noise Zones

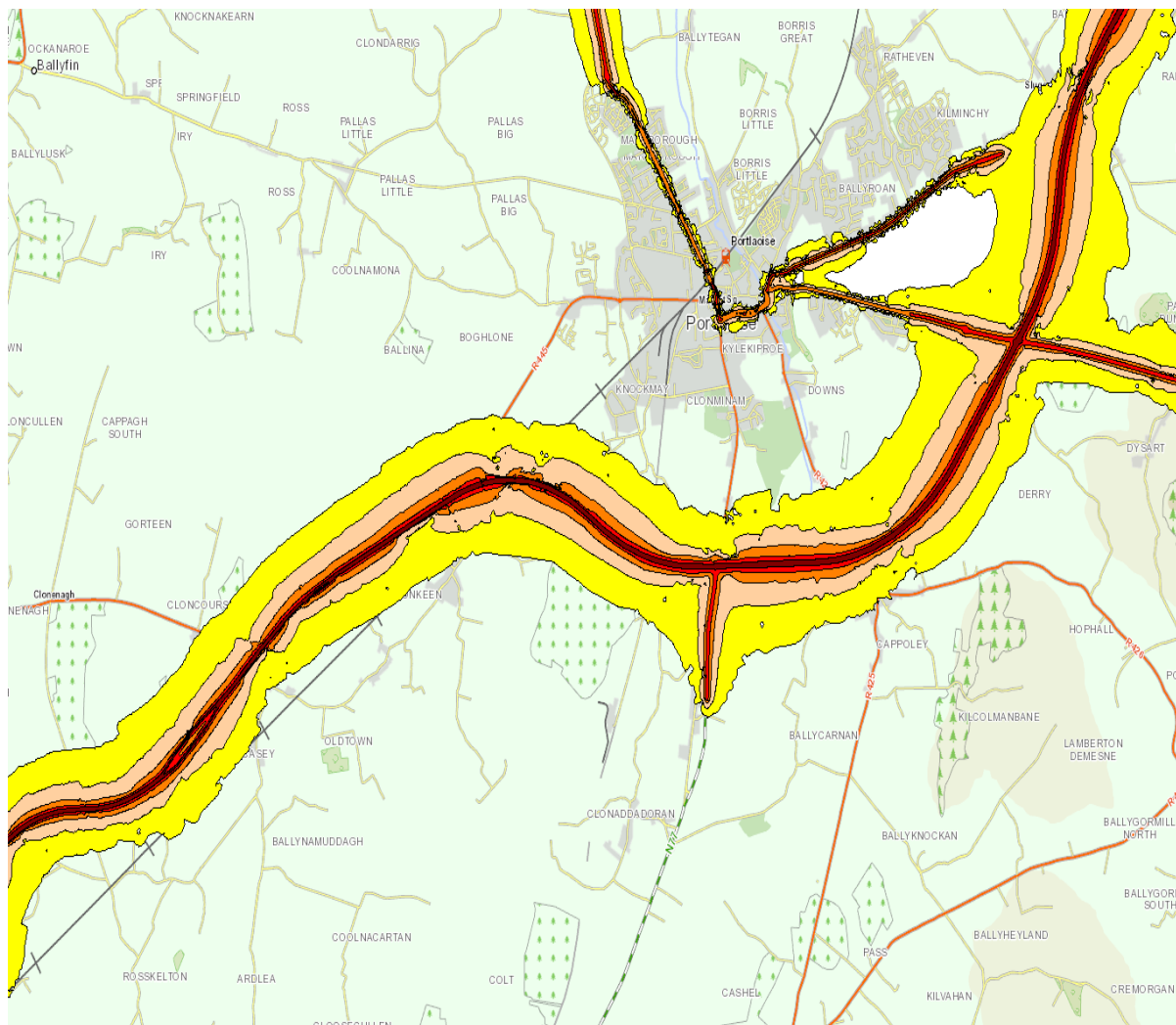
#### Lnight (dB)

45 to 49 (dB)
50 to 54 (dB)
55 to 59 (dB)
60 to 64 (dB)
65 to 69 (dB)
≥ 70 (dB)

#### Road Type

National Road
Regional Road

N80 Mountmellick to Pallas Big



LAOIS POPULATION EXPOSURE	
Leight	Approximate Number of People
50 - 54	1,462
55 - 59	1,289
60 - 64	194
65 - 69	0
> 70	0
Leight	Approximate Area (km <sup>2</sup> )
> 50	36
> 60	7
> 70	0
Leight	Approximate Number of Dwellings
> 50	1,263
> 60	100
> 70	0
Leight	Approximate Number of People
> 50	2,945
> 60	194
> 70	0

#### Noise Zones

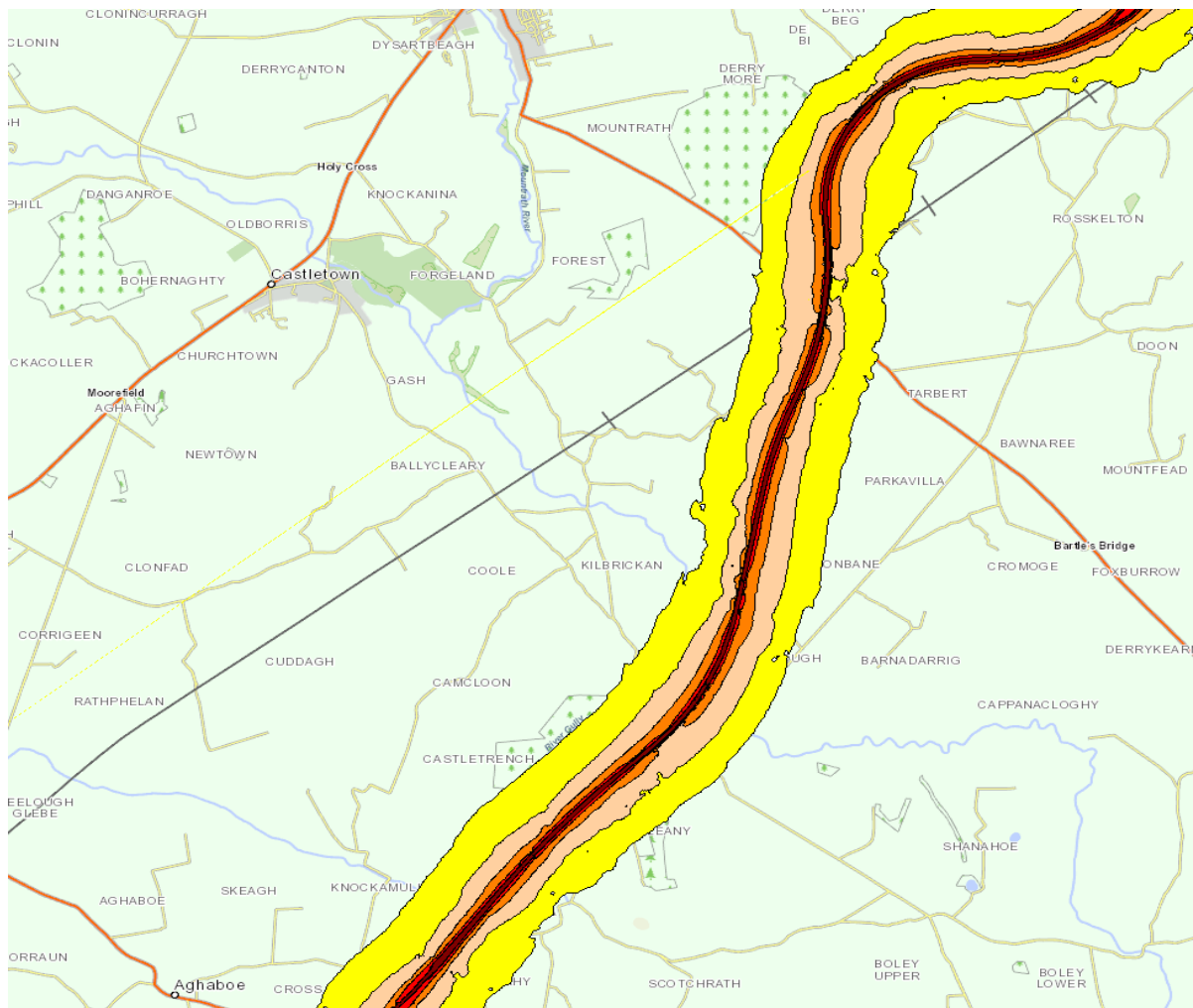
##### Leight (dB)

Yellow	45 to 49 (dB)
Orange	50 to 54 (dB)
Red	55 to 59 (dB)
Dark Red	60 to 64 (dB)
Maroon	65 to 69 (dB)
Purple	≥ 70 (dB)

##### Road Type

Green line	National Road
Orange line	Regional Road

N80 Rossnagad to Portlaoise incl M7 around Portlaoise



LAOIS POPULATION EXPOSURE	
L <sub>night</sub>	Approximate Number of People
50 - 54	1,462
55 - 59	1,289
60 - 64	194
65 - 69	0
> 70	0
L <sub>night</sub>	Approximate Area (km <sup>2</sup> )
> 50	36
> 60	7
> 70	0
L <sub>night</sub>	Approximate Number of Dwellings
> 50	1,263
> 60	100
> 70	0
L <sub>night</sub>	Approximate Number of People
> 50	2,945
> 60	194
> 70	0

#### Noise Zones

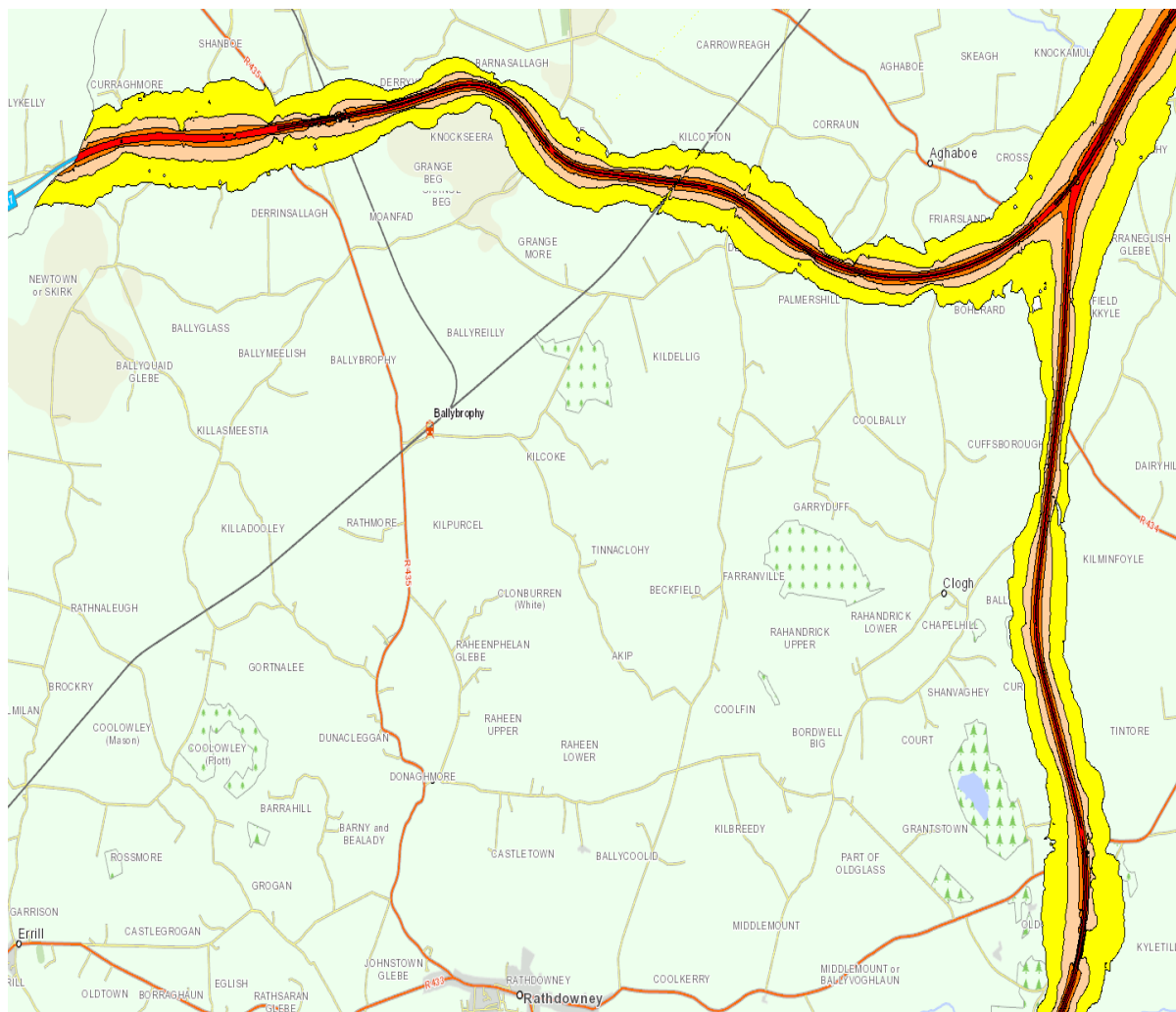
##### L<sub>night</sub> (dB)

Yellow	45 to 49 (dB)
Orange	50 to 54 (dB)
Red	55 to 59 (dB)
Dark Red	60 to 64 (dB)
Purple	65 to 69 (dB)
Dark Purple	≥ 70 (dB)

##### Road Type

Green line	National Road
Orange line	Regional Road

M7 Rosskelton to Aghaboe



LAOIS POPULATION EXPOSURE	
L <sub>night</sub>	Approximate Number of People
50 - 54	1,462
55 - 59	1,289
60 - 64	194
65 - 69	0
> 70	0
L <sub>night</sub>	Approximate Area (km <sup>2</sup> )
> 50	36
> 60	7
> 70	0
L <sub>night</sub>	Approximate Number of Dwellings
> 50	1,263
> 60	100
> 70	0
L <sub>night</sub>	Approximate Number of People
> 50	2,945
> 60	194
> 70	0

### Noise Zones

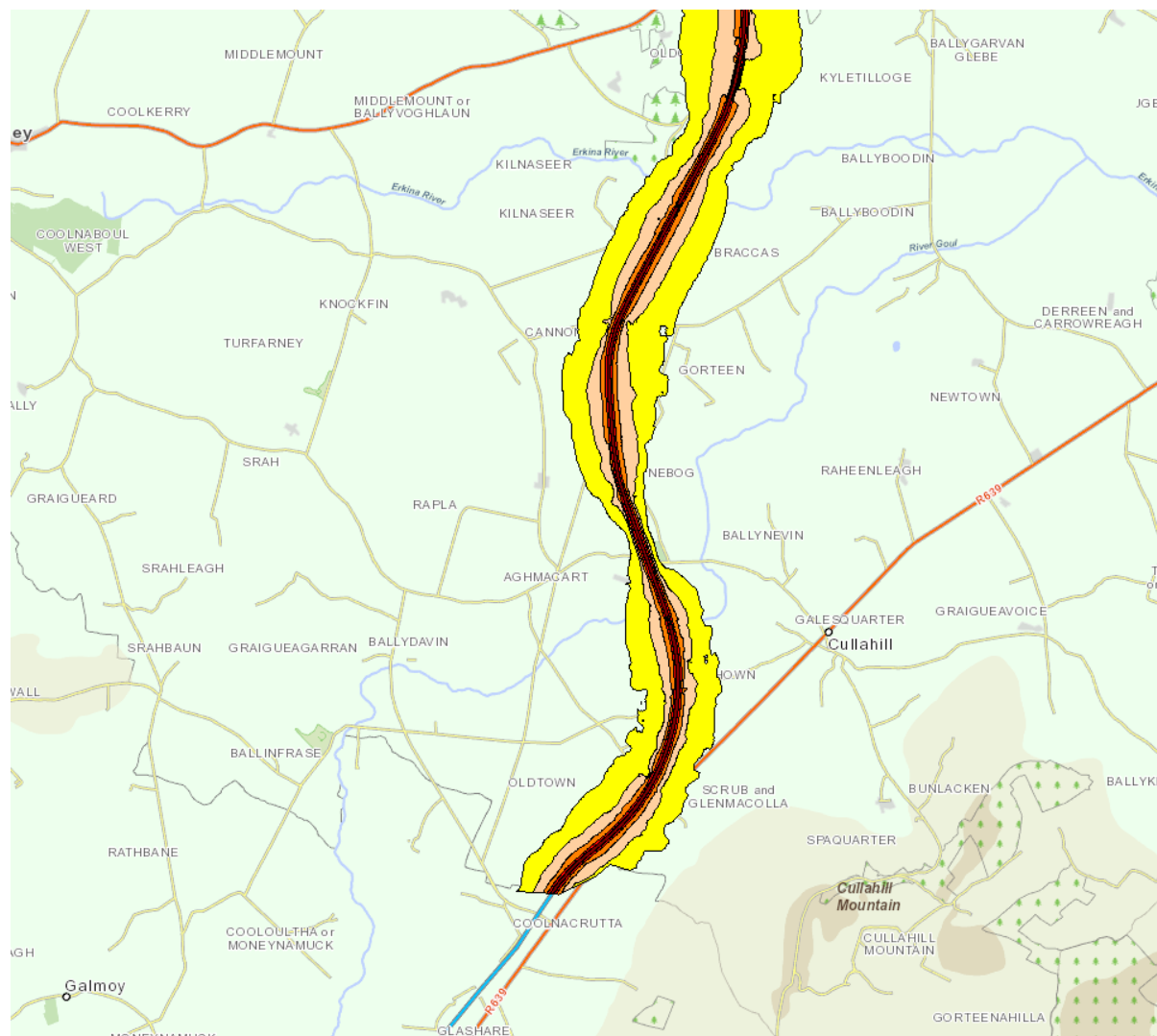
#### L<sub>night</sub> (dB)

Yellow	45 to 49 (dB)
Orange	50 to 54 (dB)
Red	55 to 59 (dB)
Dark Red	60 to 64 (dB)
Maroon	65 to 69 (dB)
Purple	≥ 70 (dB)

#### Road Type

Green line	National Road
Orange line	Regional Road

**M7 Aghaboe to Curraghmore**



LAOIS POPULATION EXPOSURE	
$L_{night}$	Approximate Number of People
50 - 54	1,462
55 - 59	1,289
60 - 64	194
65 - 69	0
> 70	0
$L_{night}$	Approximate Area (km <sup>2</sup> )
> 50	36
> 60	7
> 70	0
$L_{night}$	Approximate Number of Dwellings
> 50	1,263
> 60	100
> 70	0
$L_{night}$	Approximate Number of People
> 50	2,945
> 60	194
> 70	0

#### Noise Zones

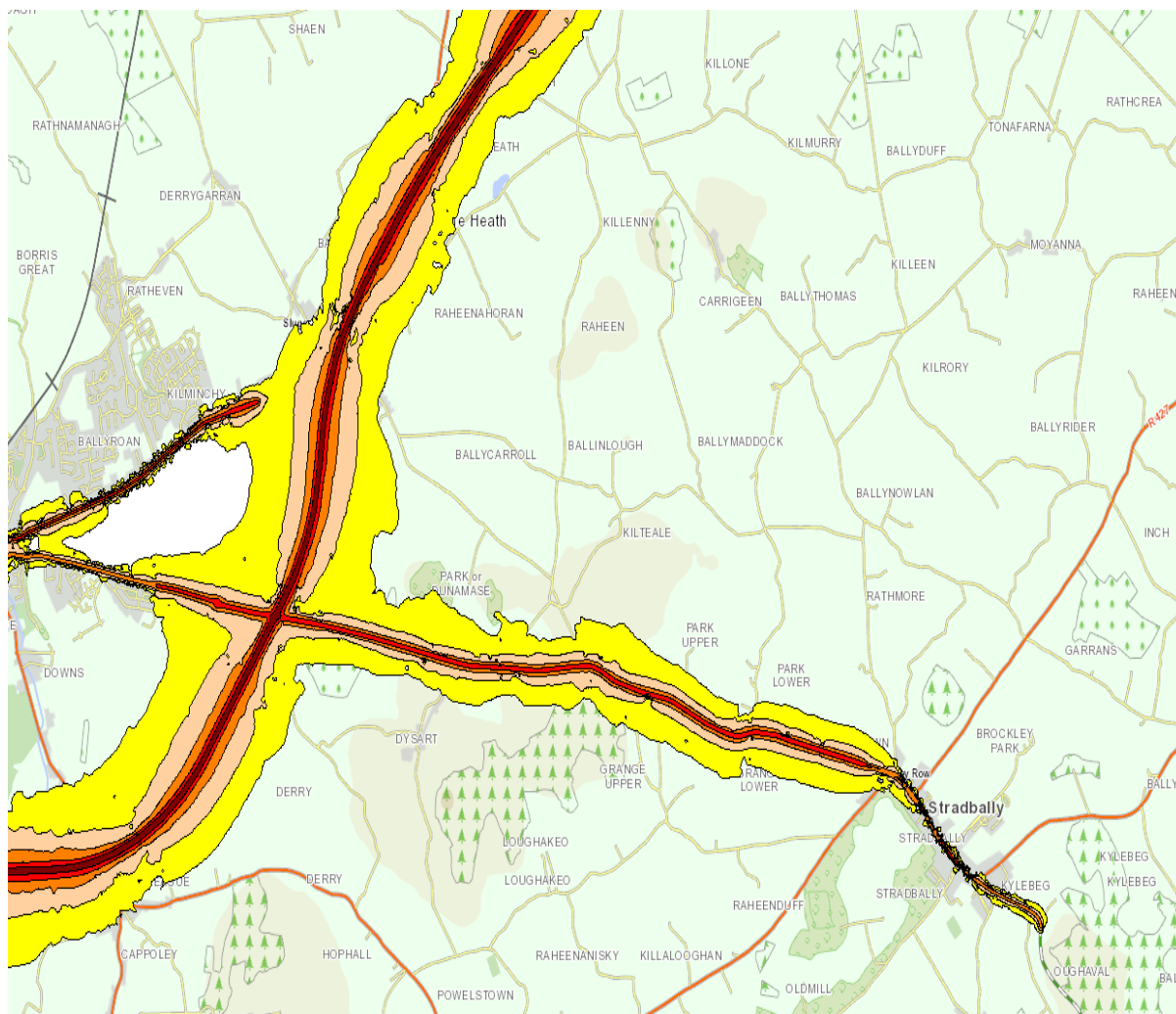
##### $L_{night}$ (dB)

45 to 49 (dB)
50 to 54 (dB)
55 to 59 (dB)
60 to 64 (dB)
65 to 69 (dB)
≥ 70 (dB)

##### Road Type

National Road
Regional Road

**M8 Kilnaseer to Coolnacrutta**



LAOIS POPULATION EXPOSURE	
L <sub>night</sub>	Approximate Number of People
50 - 54	1,462
55 - 59	1,289
60 - 64	194
65 - 69	0
> 70	0
L <sub>night</sub>	Approximate Area (km <sup>2</sup> )
> 50	36
> 60	7
> 70	0
L <sub>night</sub>	Approximate Number of Dwellings
> 50	1,263
> 60	100
> 70	0
L <sub>night</sub>	Approximate Number of People
> 50	2,945
> 60	194
> 70	0

#### Noise Zones

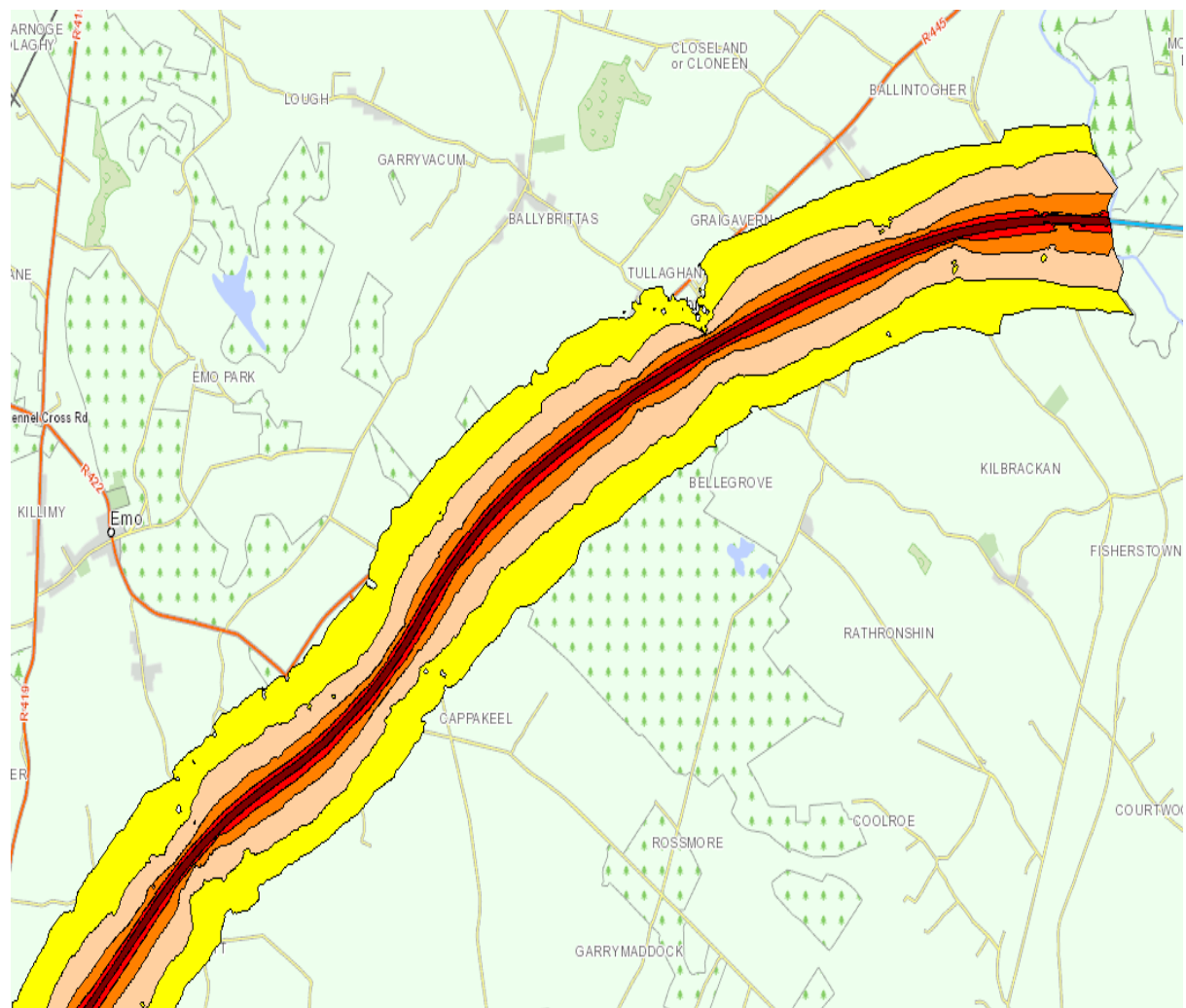
##### L<sub>night</sub> (dB)

Yellow	45 to 49 (dB)
Orange	50 to 54 (dB)
Red	55 to 59 (dB)
Dark Red	60 to 64 (dB)
Maroon	65 to 69 (dB)
Purple	≥ 70 (dB)

##### Road Type

Green line	National Road
Orange line	Regional Road

**M7 Heath to Cappoley and N80 to Stradbally**



LAOIS POPULATION EXPOSURE	
$L_{night}$	Approximate Number of People
50 - 54	1,462
55 - 59	1,289
60 - 64	194
65 - 69	0
> 70	0
$L_{night}$	Approximate Area (km <sup>2</sup> )
> 50	36
> 60	7
> 70	0
$L_{night}$	Approximate Number of Dwellings
> 50	1,263
> 60	100
> 70	0
$L_{night}$	Approximate Number of People
> 50	2,945
> 60	194
> 70	0

#### Noise Zones

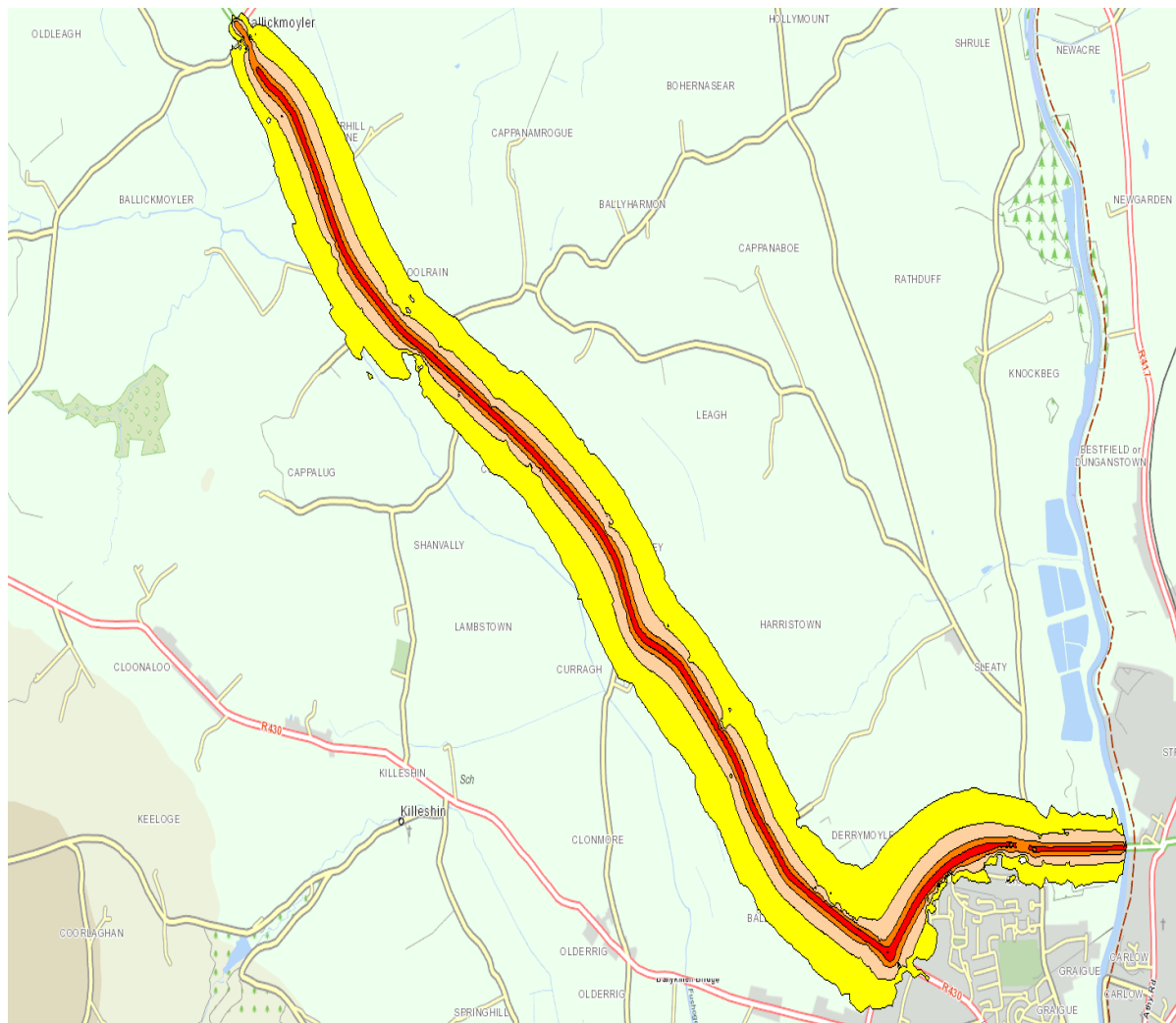
##### $L_{night}$ (dB)

45 to 49 (dB)
50 to 54 (dB)
55 to 59 (dB)
60 to 64 (dB)
65 to 69 (dB)
≥ 70 (dB)

##### Road Type

National Road
Regional Road

M7 Heath to Kilbrackan



LAOIS POPULATION EXPOSURE	
L <sub>night</sub>	Approximate Number of People
50 - 54	1,462
55 - 59	1,289
60 - 64	194
65 - 69	0
> 70	0
L <sub>night</sub>	Approximate Area (km <sup>2</sup> )
> 50	36
> 60	7
> 70	0
L <sub>night</sub>	Approximate Number of Dwellings
> 50	1,263
> 60	100
> 70	0
L <sub>night</sub>	Approximate Number of People
> 50	2,945
> 60	194
> 70	0

#### Noise Zones

##### L<sub>night</sub> (dB)

Yellow	45 to 49 (dB)
Orange	50 to 54 (dB)
Red	55 to 59 (dB)
Dark Red	60 to 64 (dB)
Maroon	65 to 69 (dB)
Purple	≥ 70 (dB)

##### Road Type

Green line	National Road
Orange line	Regional Road

**N80 Ballickmoyler to Graigecullen**