

LAOIS POPULATION EXPOSURE	
$L_{den}$	Approximate Number of People
55 - 59	1,989
60 - 64	1,307
65 - 69	1,193
70 - 74	123
> 75	0
$L_{den}$	Approximate Area (km <sup>2</sup> )
> 55	65
> 65	13
> 75	2
$L_{den}$	Approximate Number of Dwellings
> 55	1,920
> 65	605
> 75	0
$L_{den}$	Approximate Number of People
> 55	4,612
> 65	1,316
> 75	0

#### Noise Zone

##### $L_{den}$ (dB)

Orange	55 to 59 (dB)
Red	60 to 64 (dB)
Dark Red	65 to 69 (dB)
Purple	70 to 74 (dB)
Blue	≥ 75 (dB)

##### Road Type

Green line	National Road
Yellow line	Regional Road

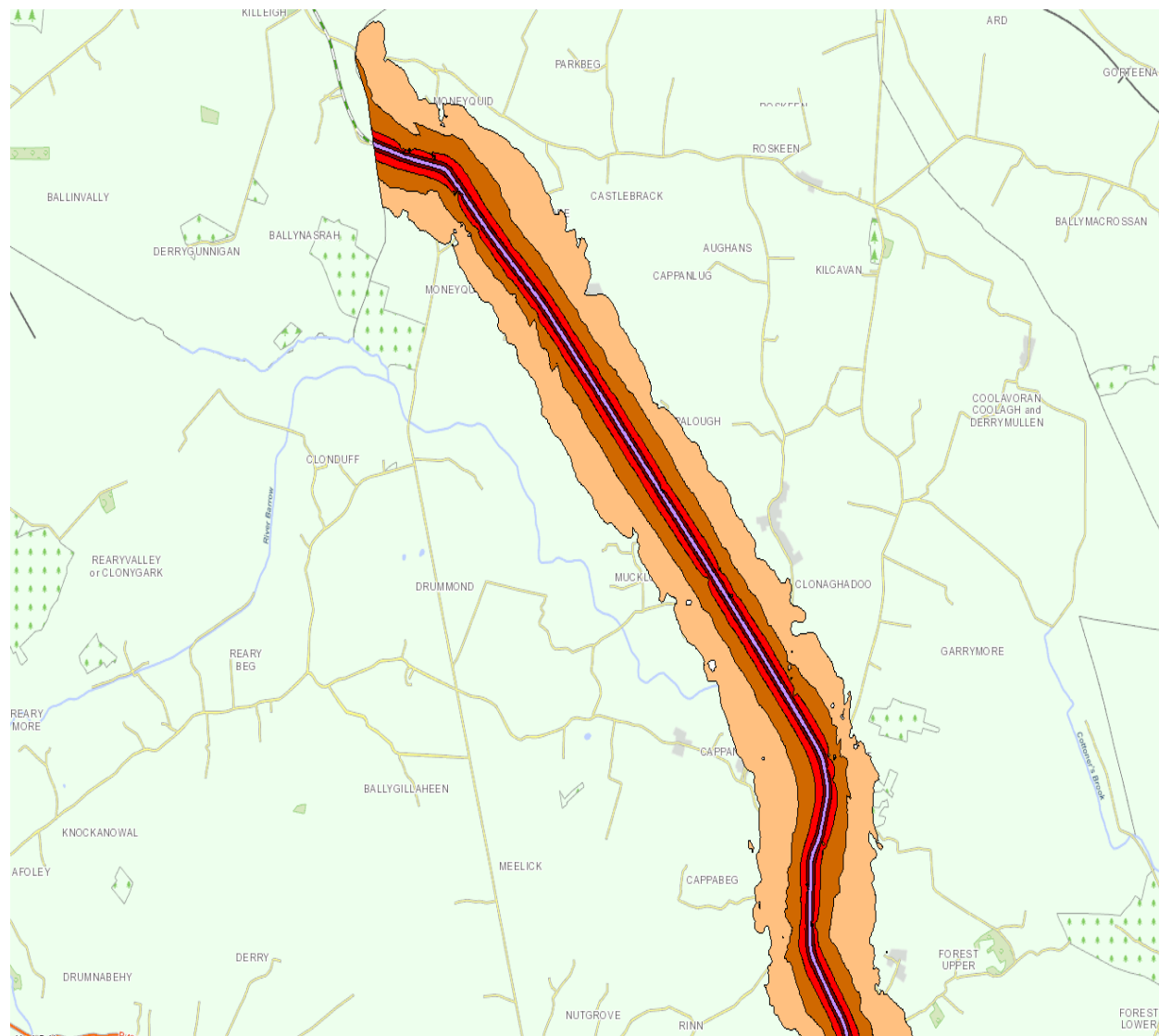


**Ireland Strategic Noise Mapping  
Round 3 (2017)**

Title:  
 **$L_{den}$  (dB) - County Laois**

Coord. Syst.: TM65 Irish Grid  
Scale: 1:200,000 @ A3  
Date: December 2017

This map shows the weighted predicted annual average ( $L_{den}$ ) road traffic noise levels in County Laois. The map has been created in accordance with S.I. No. 140/2006 (the Environmental Noise Regulations) and is a representation of the average environmental noise levels over one complete year. This map forms part of a national noise mapping exercise which can be primarily used as a strategic tool for large scale planning or policy matters and is not suitable for local noise assessments. National and regional roads deemed to be carrying in excess of 3 million vehicle passages per year were assessed in this national study. Ordnance Survey Ireland Licence No. EN0045217 (Digital Contract) © Ordnance Survey Ireland/Government of Ireland



LAOIS POPULATION EXPOSURE	
$L_{den}$	Approximate Number of People
55 - 59	1,989
60 - 64	1,307
65 - 69	1,193
70 - 74	123
> 75	0
$L_{den}$	Approximate Area (km <sup>2</sup> )
> 55	65
> 65	13
> 75	2
$L_{den}$	Approximate Number of Dwellings
> 55	1,920
> 65	605
> 75	0
$L_{den}$	Approximate Number of People
> 55	4,612
> 65	1,316
> 75	0

#### Noise Zone

##### $L_{den}$ (dB)

Orange	55 to 59 (dB)
Red	60 to 64 (dB)
Dark Red	65 to 69 (dB)
Purple	70 to 74 (dB)
Blue	≥ 75 (dB)

##### Road Type

—	National Road
- - -	Regional Road

**N80- Moneyquid to Forest Upper**

LAOIS POPULATION EXPOSURE	
$L_{den}$	Approximate Number of People
55 - 59	1,989
60 - 64	1,307
65 - 69	1,193
70 - 74	123
> 75	0
$L_{den}$	Approximate Area (km <sup>2</sup> )
> 55	65
> 65	13
> 75	2
$L_{den}$	Approximate Number of Dwellings
> 55	1,920
> 65	605
> 75	0
$L_{den}$	Approximate Number of People
> 55	4,612
> 65	1,316
> 75	0

#### Noise Zone

##### $L_{den}$ (dB)

55 to 59 (dB)

60 to 64 (dB)

65 to 69 (dB)

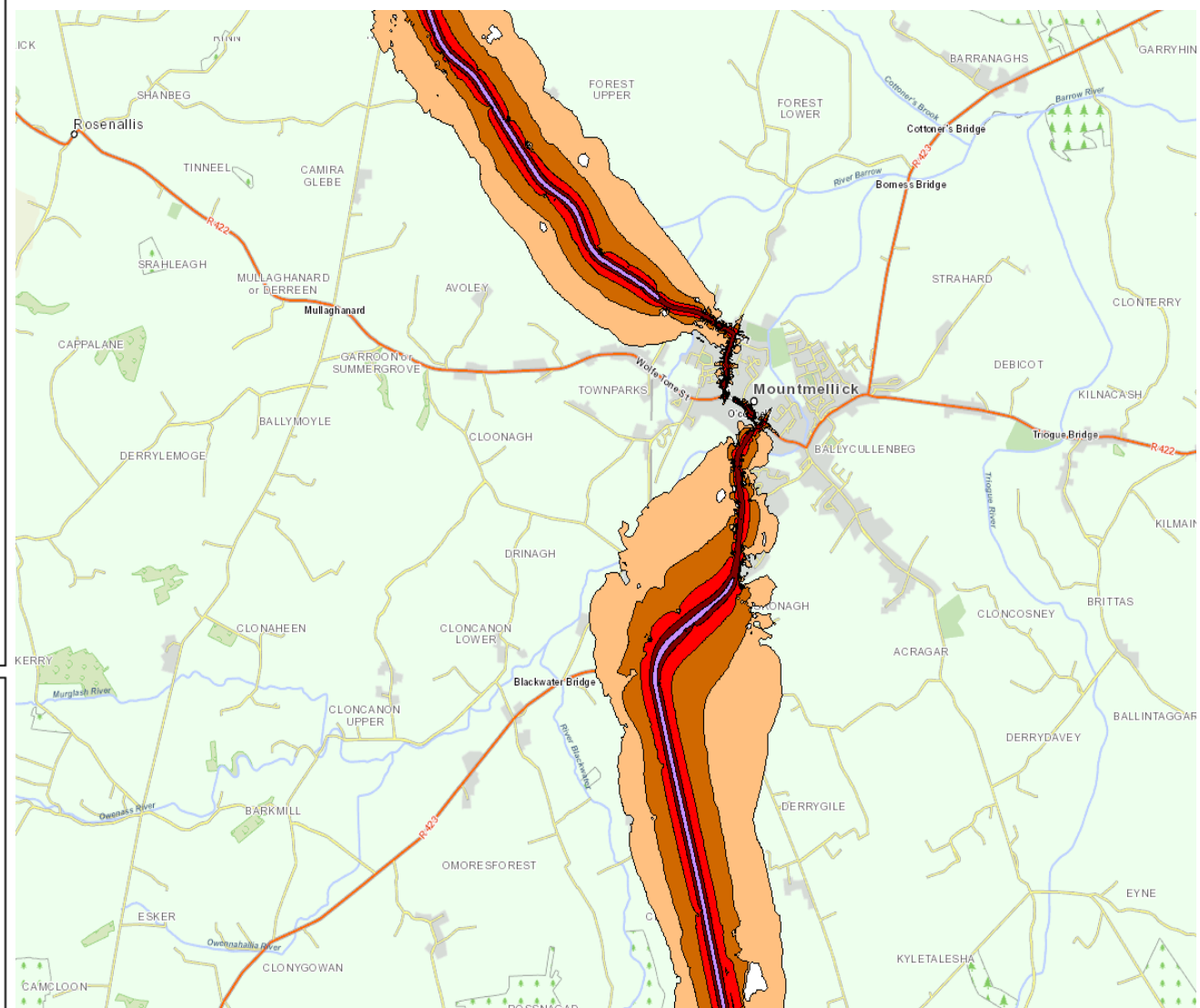
70 to 74 (dB)

≥ 75 (dB)

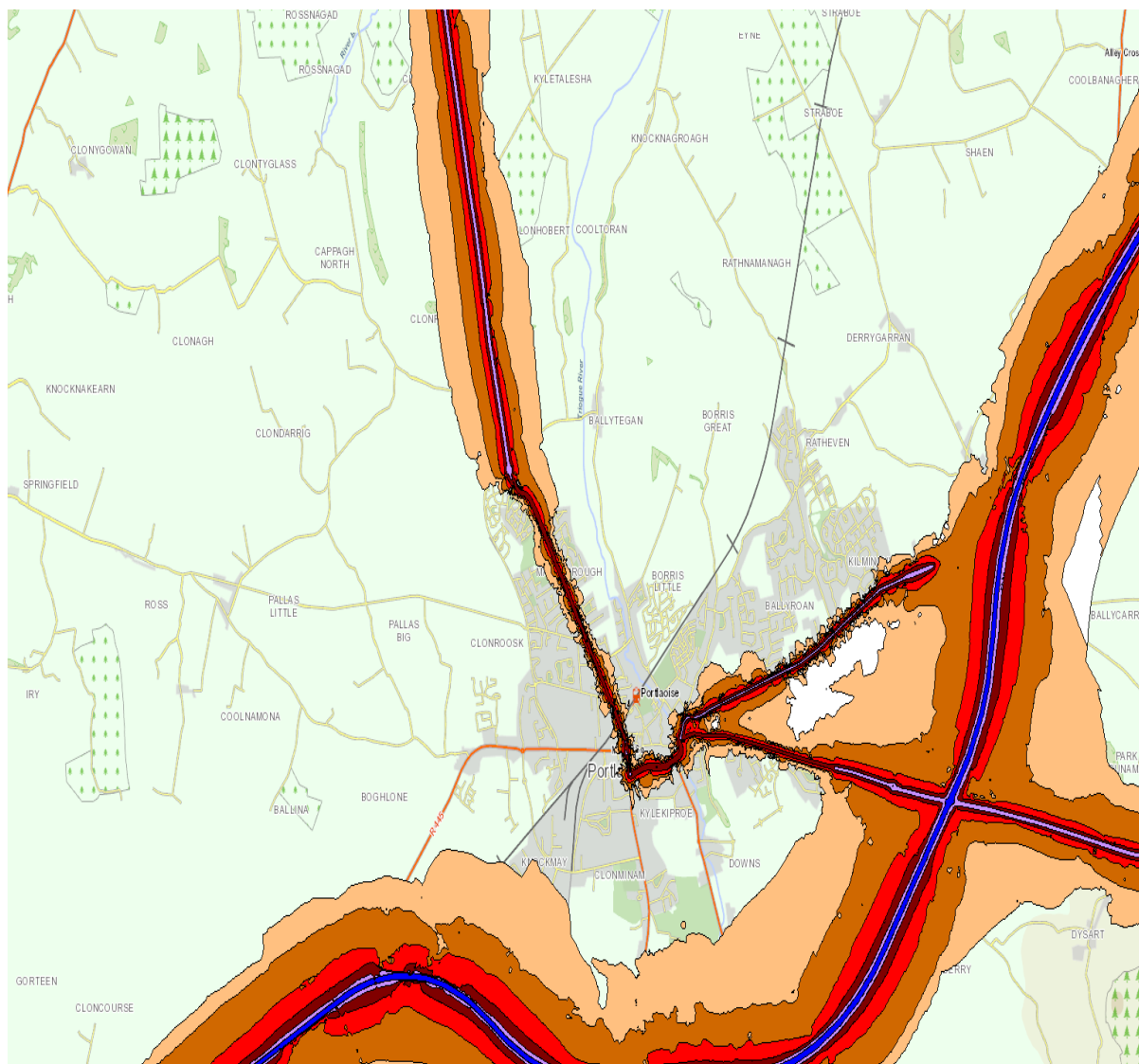
##### Road Type

National Road

Regional Road



N80 Forest Upper to Kyletalesha



LAOIS POPULATION EXPOSURE	
L <sub>den</sub>	Approximate Number of People
55 - 59	1,989
60 - 64	1,307
65 - 69	1,193
70 - 74	123
> 75	0
L <sub>den</sub>	Approximate Area (km <sup>2</sup> )
> 55	65
> 65	13
> 75	2
L <sub>den</sub>	Approximate Number of Dwellings
> 55	1,920
> 65	605
> 75	0
L <sub>den</sub>	Approximate Number of People
> 55	4,612
> 65	1,316
> 75	0

#### Noise Zone

##### L<sub>den</sub> (dB)

55 to 59 (dB)

60 to 64 (dB)

65 to 69 (dB)

70 to 74 (dB)

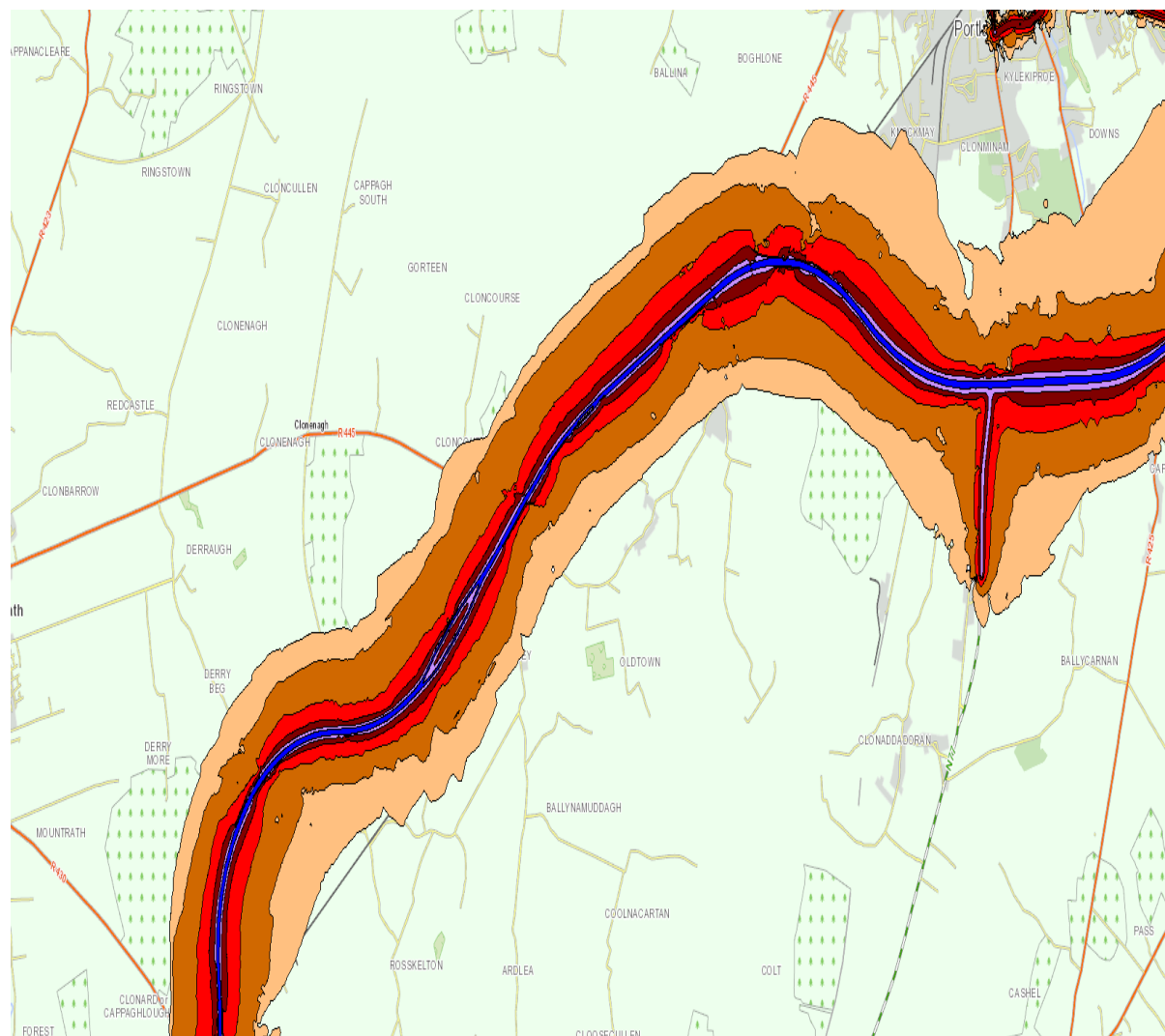
≥ 75 (dB)

##### Road Type

National Road

Regional Road

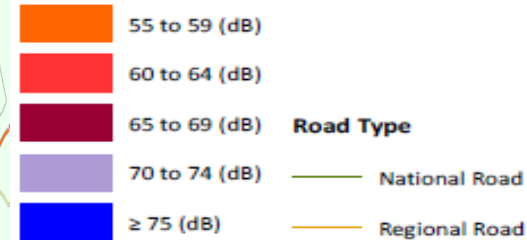
N80 Kyletalesha to Portlaoise incl. M7 around Portlaoise



LAOIS POPULATION EXPOSURE	
L <sub>den</sub>	Approximate Number of People
55 - 59	1,989
60 - 64	1,307
65 - 69	1,193
70 - 74	123
> 75	0
L <sub>den</sub>	Approximate Area (km <sup>2</sup> )
> 55	65
> 65	13
> 75	2
L <sub>den</sub>	Approximate Number of Dwellings
> 55	1,920
> 65	605
> 75	0
L <sub>den</sub>	Approximate Number of People
> 55	4,612
> 65	1,316
> 75	0

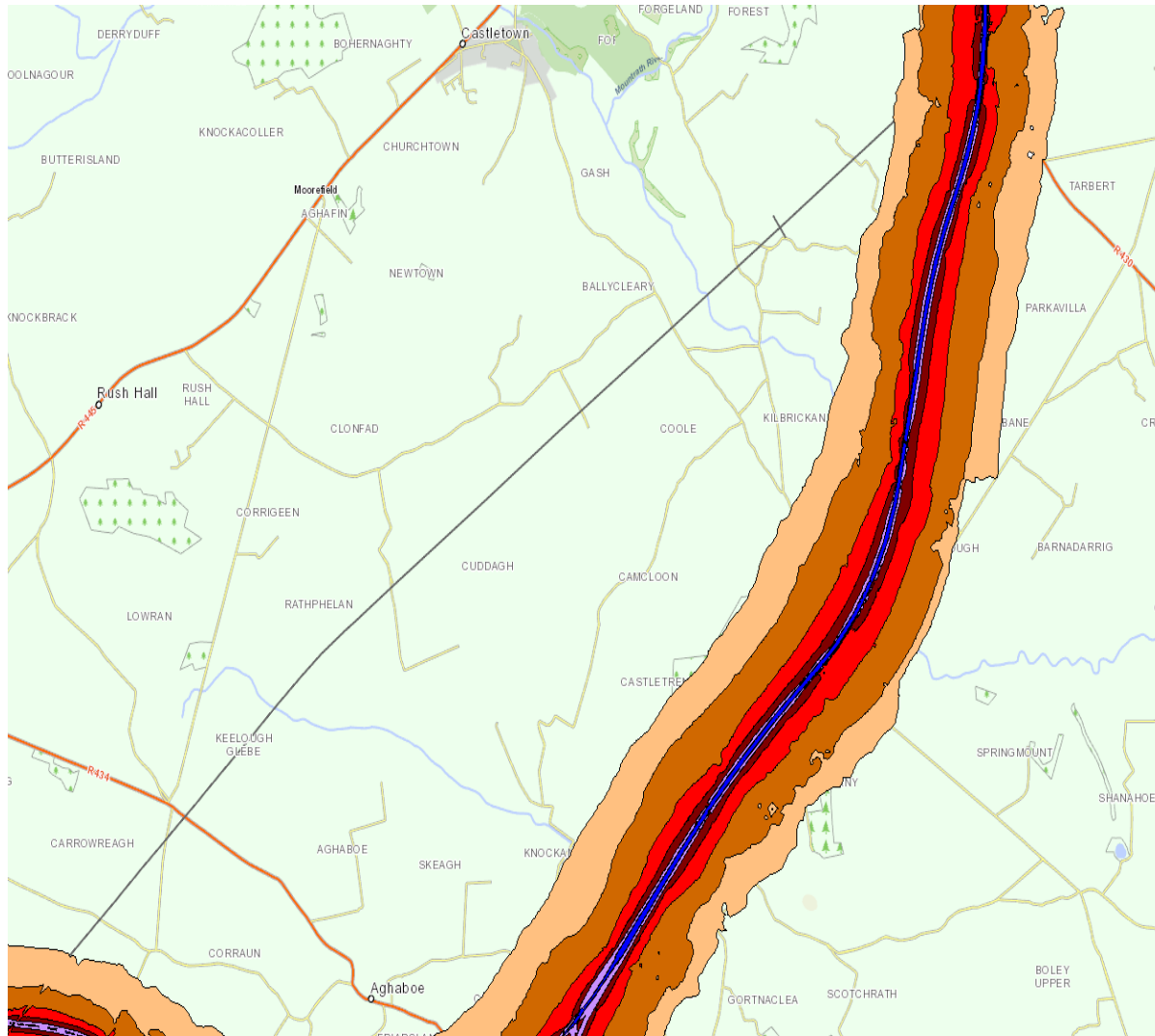
### Noise Zone

**Lden (dB)**



## M7 Portlaoise to Rosskelton





LAOIS POPULATION EXPOSURE	
$L_{den}$	Approximate Number of People
55 - 59	1,989
60 - 64	1,307
65 - 69	1,193
70 - 74	123
> 75	0
$L_{den}$	Approximate Area (km <sup>2</sup> )
> 55	65
> 65	13
> 75	2
$L_{den}$	Approximate Number of Dwellings
> 55	1,920
> 65	605
> 75	0
$L_{den}$	Approximate Number of People
> 55	4,612
> 65	1,316
> 75	0

#### Noise Zone

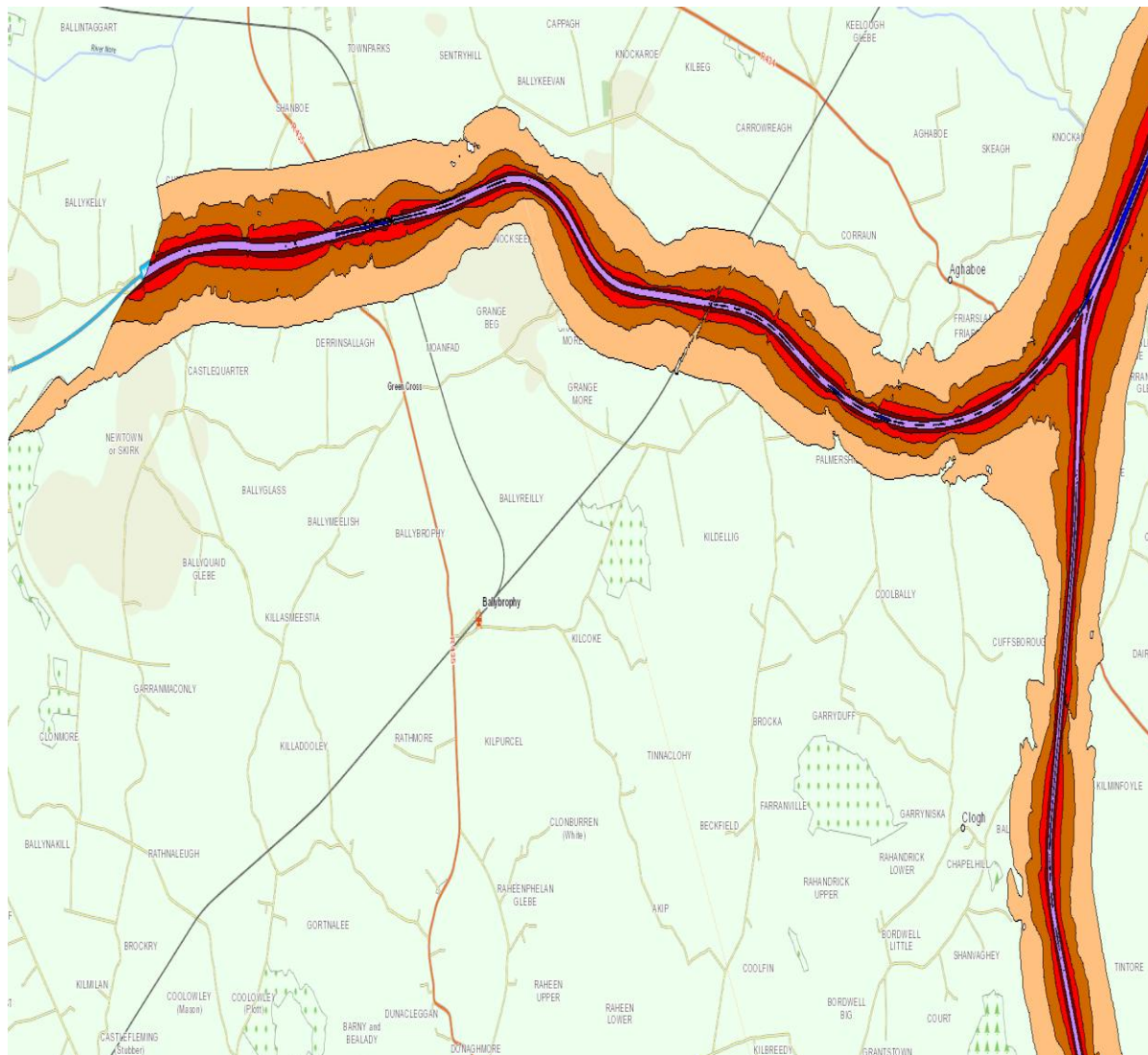
##### $L_{den}$ (dB)

<span style="display:inline-block; width:15px; height:15px; background-color:orange; border:1px solid black;"></span>	55 to 59 (dB)
<span style="display:inline-block; width:15px; height:15px; background-color:red; border:1px solid black;"></span>	60 to 64 (dB)
<span style="display:inline-block; width:15px; height:15px; background-color:maroon; border:1px solid black;"></span>	65 to 69 (dB)
<span style="display:inline-block; width:15px; height:15px; background-color:purple; border:1px solid black;"></span>	70 to 74 (dB)
<span style="display:inline-block; width:15px; height:15px; background-color:blue; border:1px solid black;"></span>	≥ 75 (dB)

##### Road Type

<span style="display:inline-block; width:15px; border-bottom:2px solid green;"></span>	National Road
<span style="display:inline-block; width:15px; border-bottom:2px solid orange;"></span>	Regional Road

**M7 Tarbert to Aghaboe**



LAOIS POPULATION EXPOSURE	
L <sub>den</sub>	Approximate Number of People
55 - 59	1,989
60 - 64	1,307
65 - 69	1,193
70 - 74	123
> 75	0
L <sub>den</sub>	Approximate Area (km <sup>2</sup> )
> 55	65
> 65	13
> 75	2
L <sub>den</sub>	Approximate Number of Dwellings
> 55	1,920
> 65	605
> 75	0
L <sub>den</sub>	Approximate Number of People
> 55	4,612
> 65	1,316
> 75	0

#### Noise Zone

##### L<sub>den</sub> (dB)

55 to 59 (dB)

60 to 64 (dB)

65 to 69 (dB)

70 to 74 (dB)

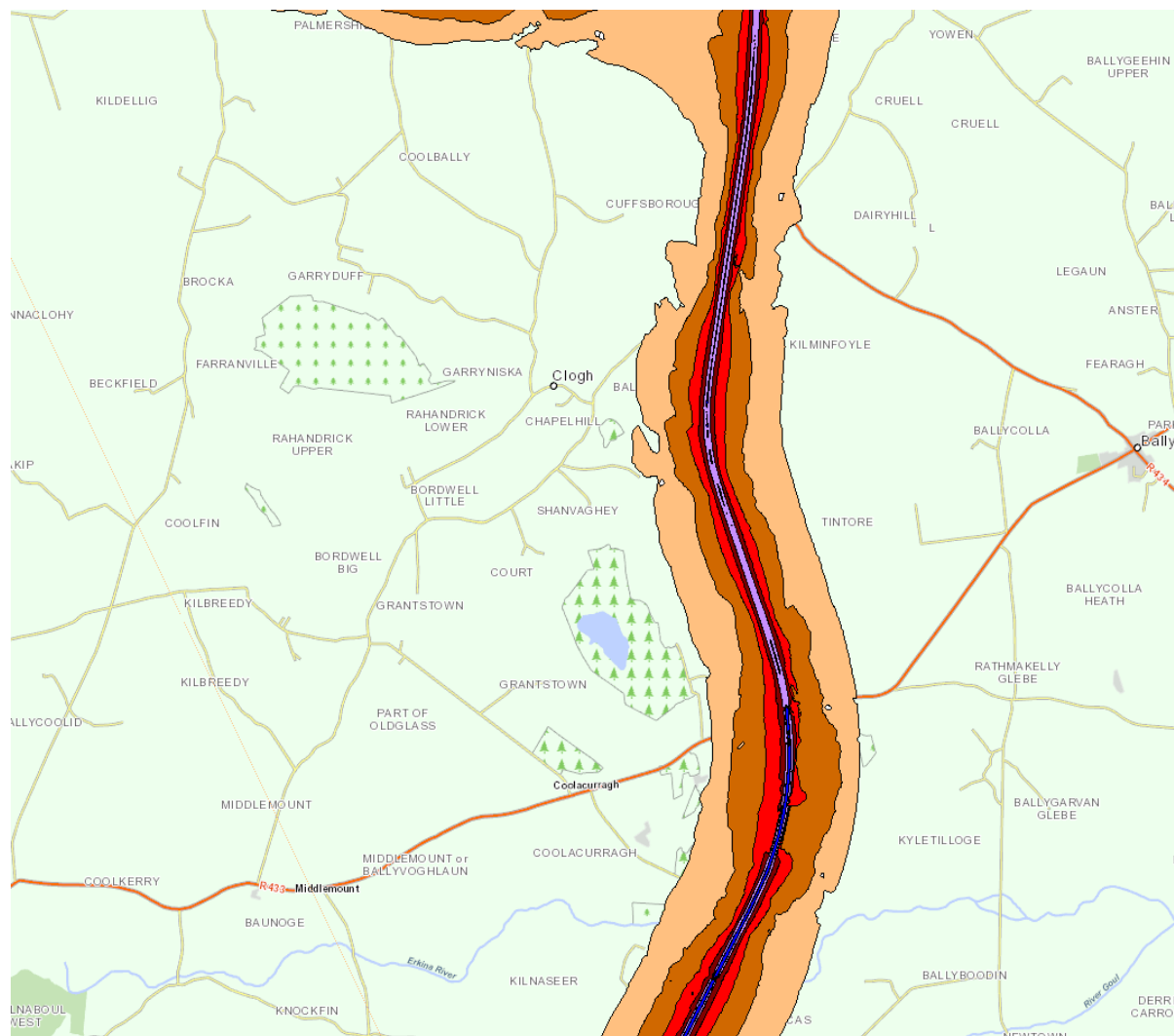
≥ 75 (dB)

##### Road Type

National Road

Regional Road

**M7 Aghaboe to Castlequarter**



LAOIS POPULATION EXPOSURE	
L <sub>den</sub>	Approximate Number of People
55 - 59	1,989
60 - 64	1,307
65 - 69	1,193
70 - 74	123
> 75	0
L <sub>den</sub>	Approximate Area (km <sup>2</sup> )
> 55	65
> 65	13
> 75	2
L <sub>den</sub>	Approximate Number of Dwellings
> 55	1,920
> 65	605
> 75	0
L <sub>den</sub>	Approximate Number of People
> 55	4,612
> 65	1,316
> 75	0

#### Noise Zone

##### L<sub>den</sub> (dB)

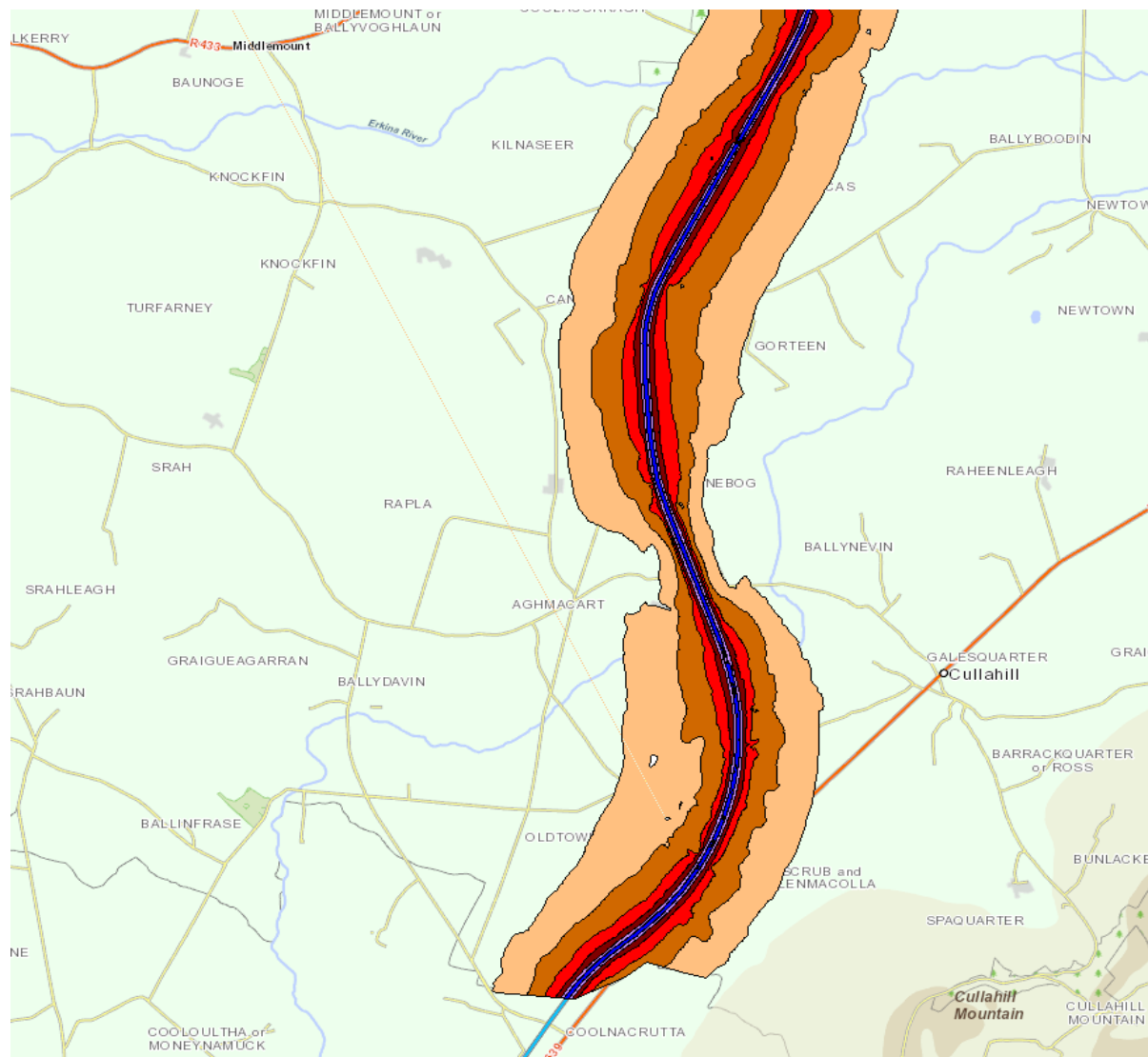
Orange	55 to 59 (dB)
Red	60 to 64 (dB)
Dark Red	65 to 69 (dB)
Purple	70 to 74 (dB)
Blue	≥ 75 (dB)

##### Road Type

Green line	National Road
Orange line	Regional Road

M8-Yowen to Kilnaseer





LAOIS POPULATION EXPOSURE	
L <sub>den</sub>	Approximate Number of People
55 - 59	1,989
60 - 64	1,307
65 - 69	1,193
70 - 74	123
> 75	0
L <sub>den</sub>	Approximate Area (km <sup>2</sup> )
> 55	65
> 65	13
> 75	2
L <sub>den</sub>	Approximate Number of Dwellings
> 55	1,920
> 65	605
> 75	0
L <sub>den</sub>	Approximate Number of People
> 55	4,612
> 65	1,316
> 75	0

#### Noise Zone

##### L<sub>den</sub> (dB)

55 to 59 (dB)

60 to 64 (dB)

65 to 69 (dB)

70 to 74 (dB)

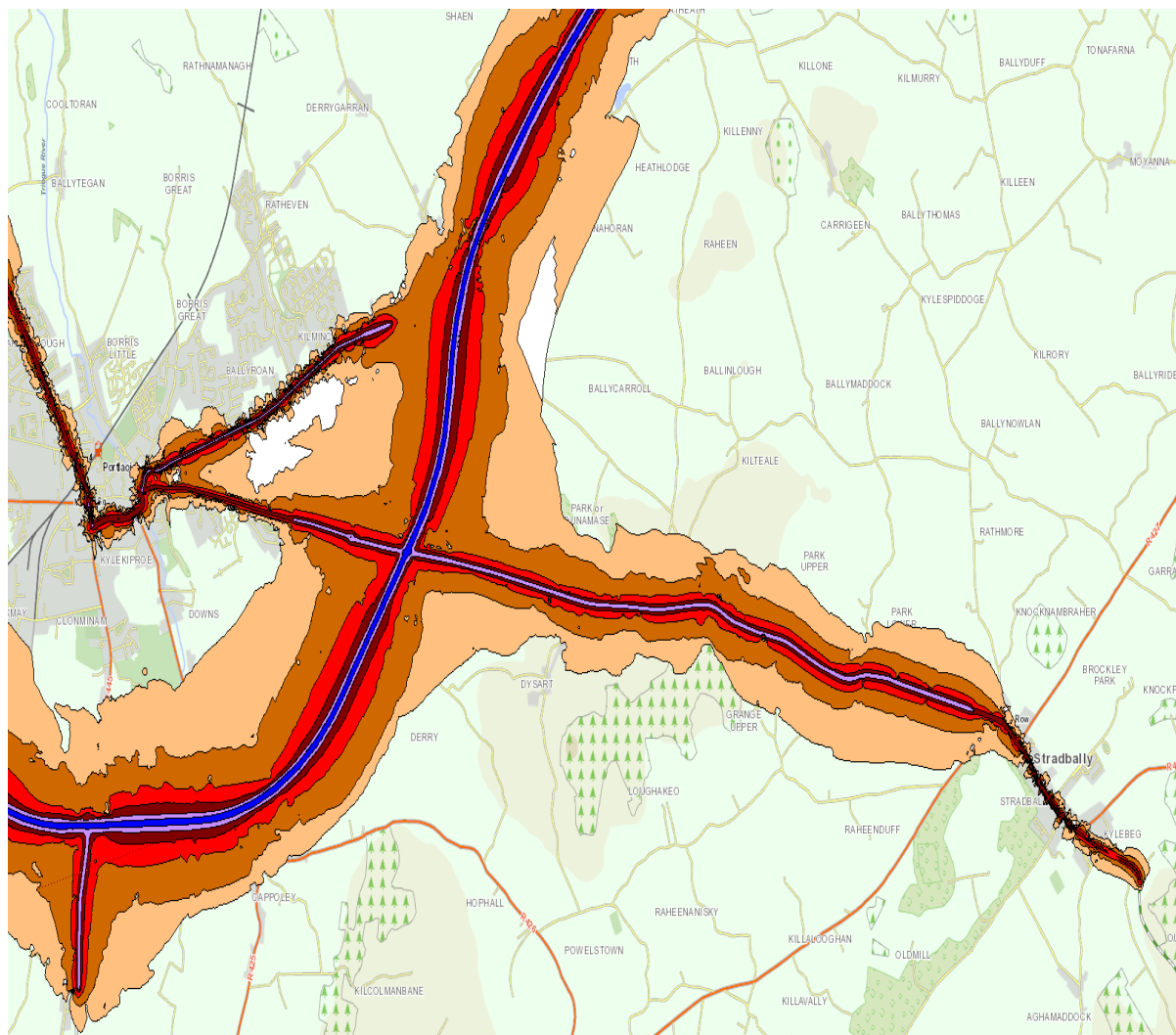
≥ 75 (dB)

##### Road Type

— National Road

- - - Regional Road

M8 Kilnaseer to Cullahill



LAOIS POPULATION EXPOSURE	
L <sub>den</sub>	Approximate Number of People
55 - 59	1,989
60 - 64	1,307
65 - 69	1,193
70 - 74	123
> 75	0
L <sub>den</sub>	Approximate Area (km <sup>2</sup> )
> 55	65
> 65	13
> 75	2
L <sub>den</sub>	Approximate Number of Dwellings
> 55	1,920
> 65	605
> 75	0
L <sub>den</sub>	Approximate Number of People
> 55	4,612
> 65	1,316
> 75	0

#### Noise Zone

##### Lden (dB)

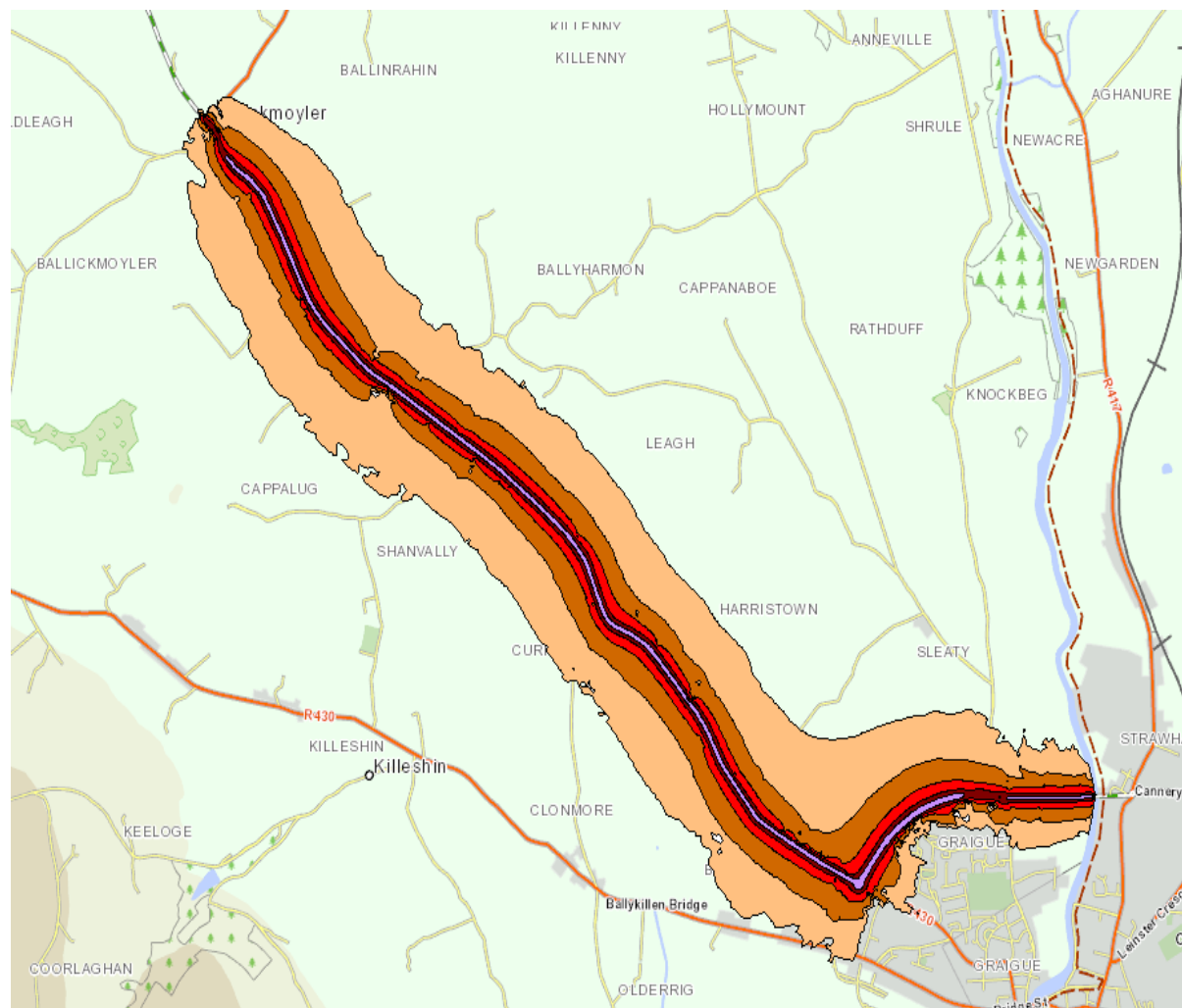
Orange	55 to 59 (dB)
Red	60 to 64 (dB)
Dark Red	65 to 69 (dB)
Purple	70 to 74 (dB)
Blue	≥ 75 (dB)

##### Road Type

Green line	National Road
Yellow line	Regional Road

**N80 Portlaoise to Stradbally**





LAOIS POPULATION EXPOSURE	
$L_{den}$	Approximate Number of People
55 - 59	1,989
60 - 64	1,307
65 - 69	1,193
70 - 74	123
> 75	0
$L_{den}$	Approximate Area (km <sup>2</sup> )
> 55	65
> 65	13
> 75	2
$L_{den}$	Approximate Number of Dwellings
> 55	1,920
> 65	605
> 75	0
$L_{den}$	Approximate Number of People
> 55	4,612
> 65	1,316
> 75	0

#### Noise Zone

##### $L_{den}$ (dB)

55 to 59 (dB)

60 to 64 (dB)

65 to 69 (dB)

70 to 74 (dB)

≥ 75 (dB)

##### Road Type

National Road

Regional Road

**N80 Ballickmoyler to Graiguecullen**