



An Lochán

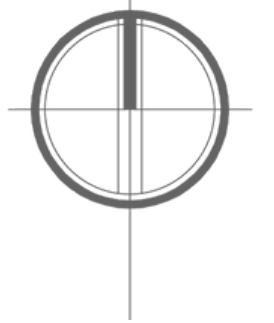
by Woodfort Group

An Lochán

SITE PLAN

— An Lochán —

NORTH



The Reed - 5 Houses Available
3 Bedroom Terrace 107-109 sq.m. / 1155-1171 sq.ft.
****Available Houses:**
Numbers 35, 43 & 45 - **Minimum selling price of €264,500****
Numbers 36 & 44 - **Minimum selling price €257,500**

The Lark - 2 Houses Available
3 Bedroom Semi-detached 110 sq.m. / 1188 sq.ft.
****Available Houses:**
Numbers 40 & 47 - **Minimum selling price €267,500**

The location of the available houses are circled on the site plan

Floor plans and dimensions are indicative only and subject to change. Woodfort Group may alter the layout, building style, landscape, and spec without notice. The finished home may therefore vary from the information provided.

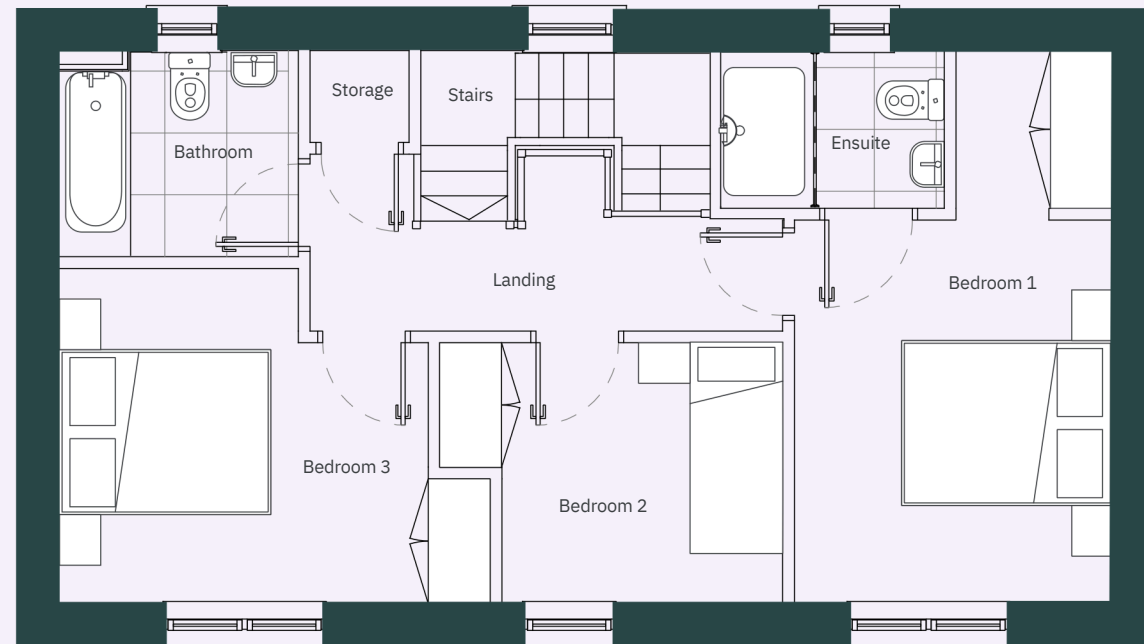
***Allocation of units will be subject to Laois County Council Assessment inline with Affordable Housing Regulations.
Final price payable by applicant will be determined by way of financial assessment inline with Affordable Housing Regulations*



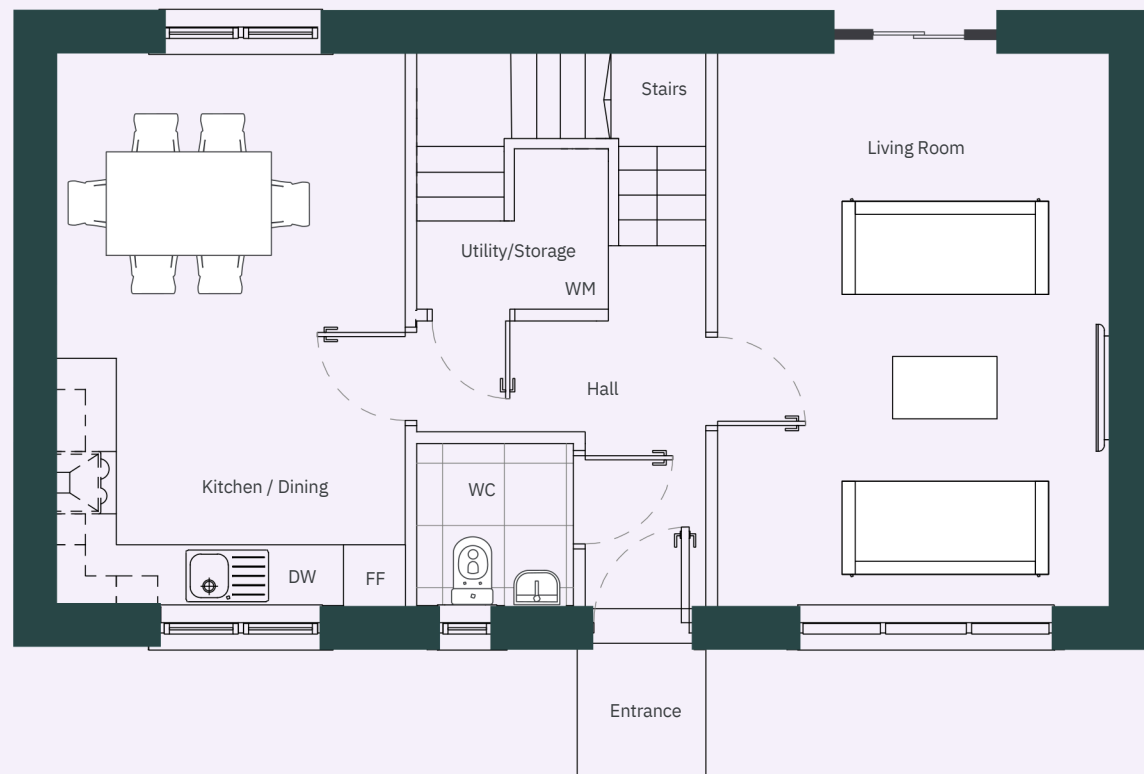
THE LARK

3 Bedroom Semi-detached
110 sq.m. / 1188 sq.ft.

First Floor



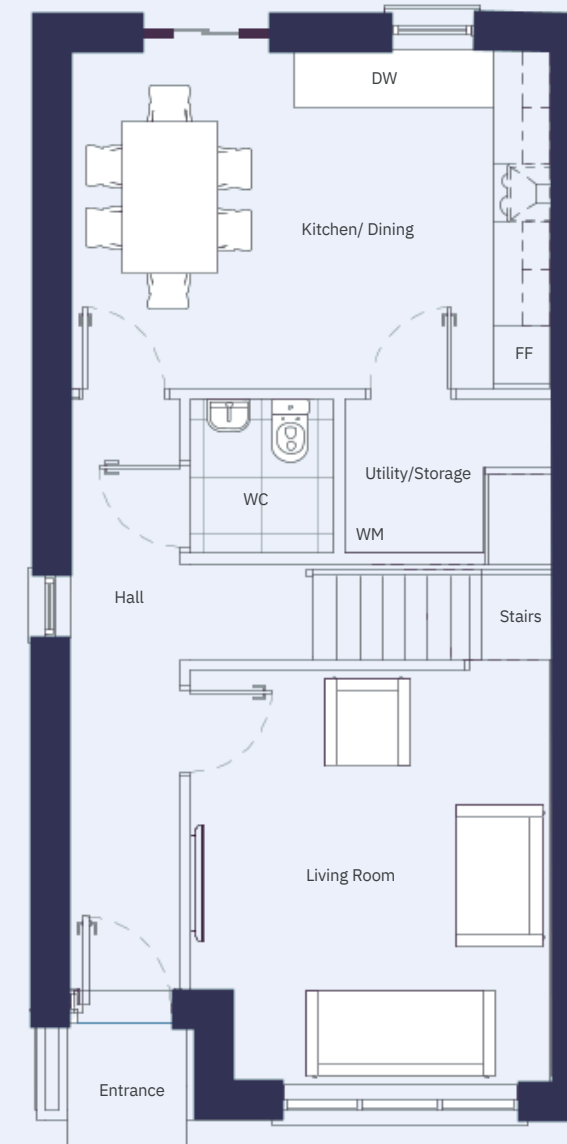
Ground Floor



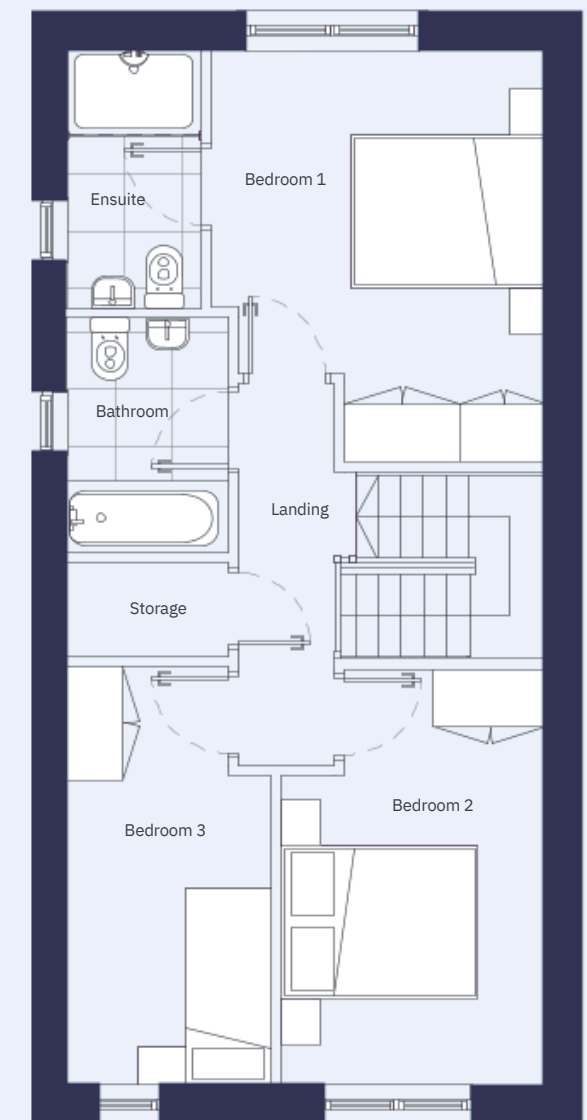
THE REED

3 Bedroom Semi-detached / Terrace
107-109 sq.m. / 1155-1171sq.ft.

Ground Floor



First Floor



HOUSE TYPES

Woodfort  **Housing for All**
A new Housing Plan for Ireland



Rialtas na hÉireann
Government of Ireland



Laois County Council
Áras an Chontae, Portlaoise, Co. Laois