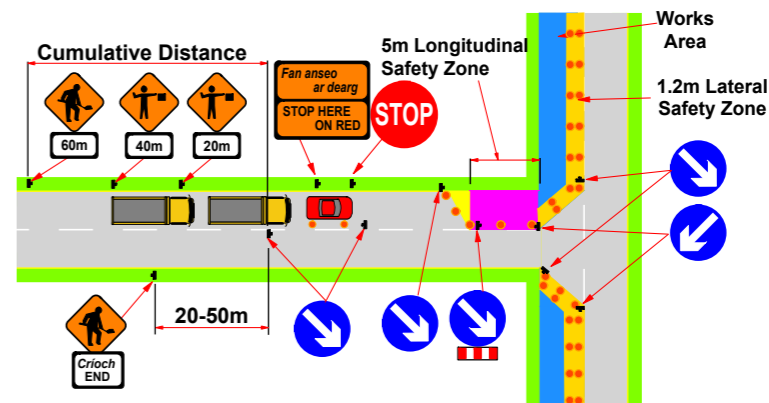
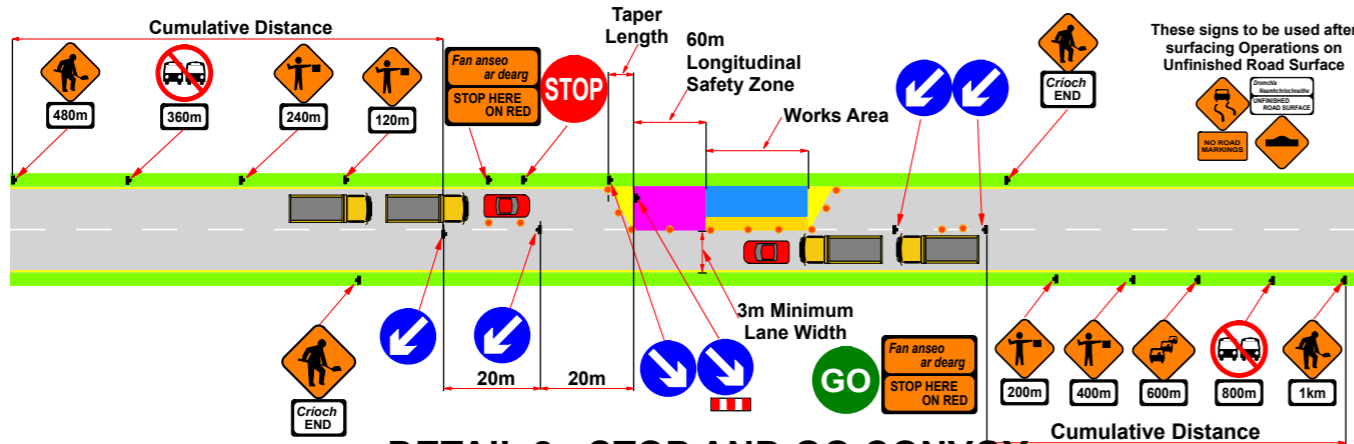


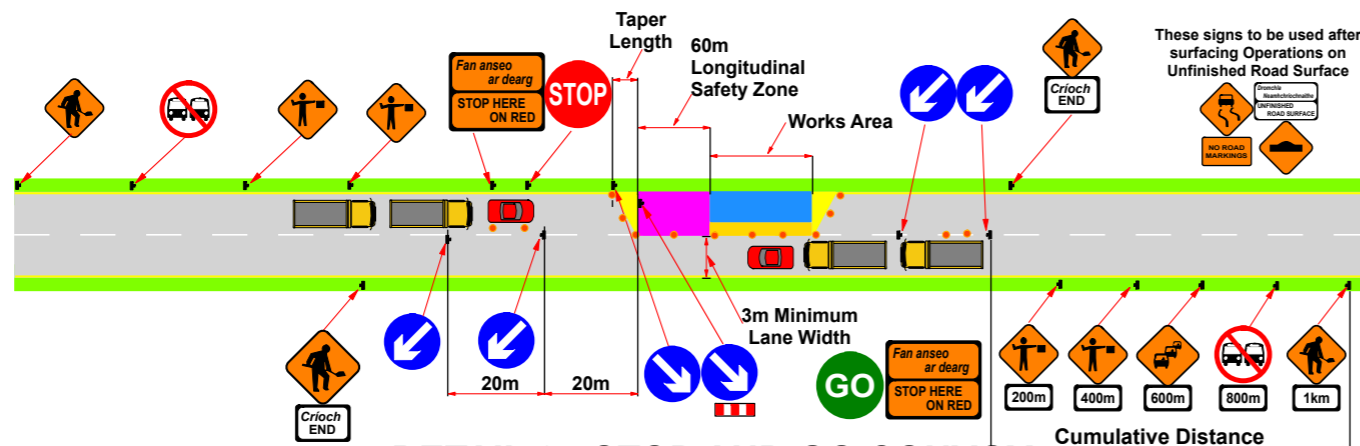
DETAIL 1 - STOP AND GO CONVOY
N.T.S



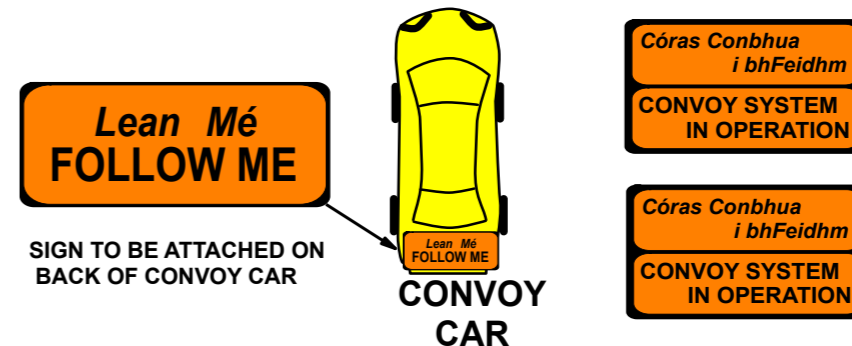
DETAIL 4 - "T" JUNCTION
N.T.S



DETAIL 2 - STOP AND GO CONVOY
N.T.S






DETAIL 3 - STOP AND GO CONVOY
N.T.S



SIGN TO BE ATTACHED ON BACK OF CONVOY CAR


CONVOY CAR

NOTES

- Management of pedestrians will be implement as required on site.
- Pedestrian barrier will be used when required.
- Permanent traffic lights must not conflict with TTM and must be turned off by client.
- Tower Lights to be provided by the Main Contractor.
- Safe passage through the site for emergency services will be facilitated.
- Keep safety zones free from works, plant, materials and operatives.
- Where surfacing takes place the following may be used:
*Ramps ahead 
*Slippery road surface 
- Identify overhead electrical cables 

Client


Project
N80 Portlaoise to Mountmellick (Kyletalesha)
Co. Laois - CH 00 to CH 5120
Comments
Stop and Go

| | | | |
|---|-----------------------------------|--------------------------------|-------------------------|
|  | DWG No 23_073-03_002_RS | Drawn by Maria Luiza | Rev 00 |
| | Scale N.T.S. | Designer Irene Walsh | Date 21/06/23 |

