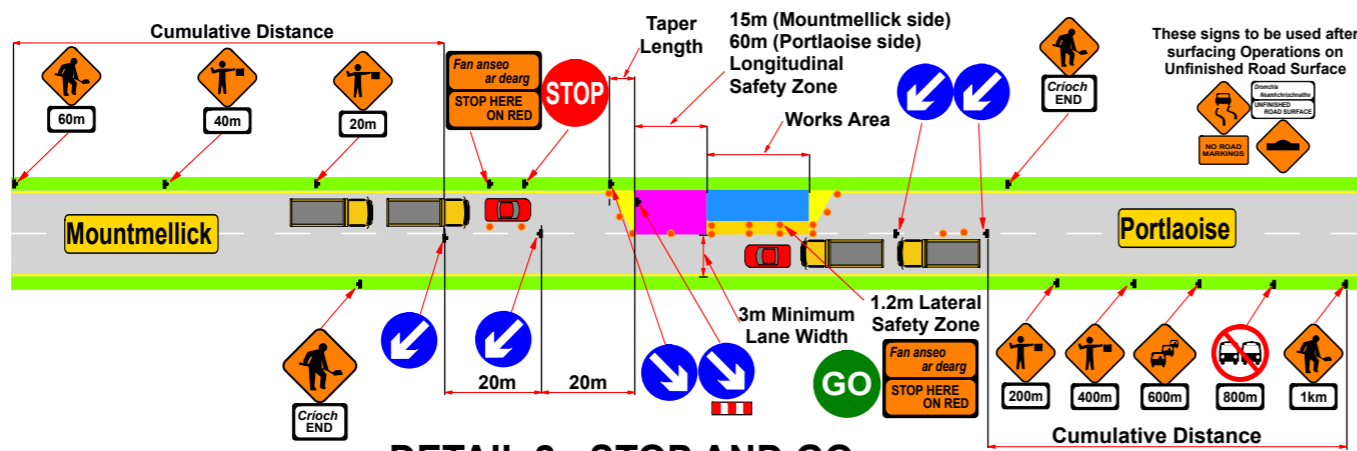
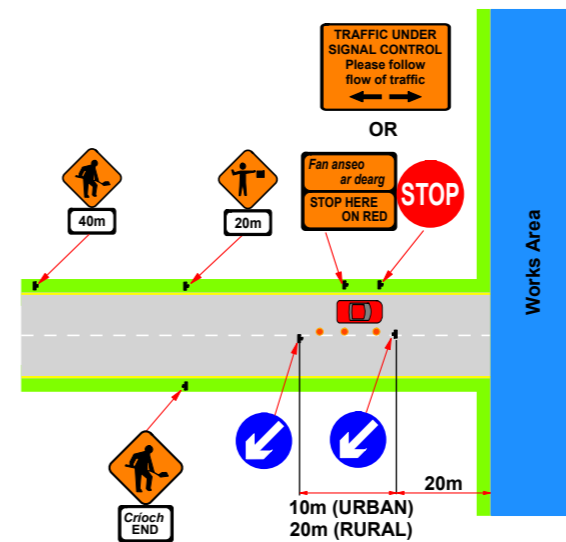


DETAIL 1 - STOP AND GO
N.T.S



DETAIL 2 - STOP AND GO
N.T.S



DETAIL 3 - SIDE ROADS
N.T.S

Table 8.2.2.7 Minimum Design Parameters for Level 2(ii) Roads (Single Carriageway of 100km/h)

Design Parameter	Type A >12 hours	Type B <12 hours	Type C <15 mins
Advance Warning Signage			
Sign Size (mm)	750	750	-
Sign visibility (m)	120	120	120
Number of Signs	4	3	-
Cumulative Distance (m)	800	600	-
Distance between Advance Warning Signs (m)	200	200	-
Taper			
Lane Taper Rate ^A	1 in 60	1 in 60	-
Hard Shoulder Taper Rate ^A	1 in 30	1 in 30	-
Cones			
Cone height (mm)	1,000	1,000	-
Taper Spacing (m) ^B	3	3	-
Longitudinal Spacing (m) ^B	12	12	-
Lamps (unit areas only)			
Taper Spacing (m)	6	6	-
Longitudinal Spacing (m)	24	24	-
Safety Zones			
Longitudinal (m)	60	60	-
Lateral (m)	1.2	1.2	-
Lanes			
Lane Width (m) ^C	3	3	-

Table 8.2.2.4 Minimum Design Parameters for Level 1(iii) Roads (Single Carriageway of 50km/h)

Design Parameter	Type A >12 hours	Type B <12 hours	Type C <15 mins
Advance Warning Signage			
Sign Size (mm)	600	600	-
Sign visibility (m)	50	50	50
Number of Signs	2	2	-
Cumulative Distance (m)	40	40	-
Distance between Advance Warning Signs (m)	20	20	-
Taper			
Lane Taper Rate ^A	1 in 5	1 in 5	-
Hard Shoulder Taper Rate ^A	-	-	-
Cones			
Cone height (mm)	750	750	-
Taper Spacing (m) ^B	3	3	-
Longitudinal Spacing (m) ^B	3	3	-
Lamps (unit areas only)			
Taper Spacing (m)	6	6	-
Longitudinal Spacing (m)	6	6	-
Safety Zones			
Longitudinal (m)	5	5	-
Lateral (m)	0.5	0.5	-
Lanes			
Lane Width (m) ^C	3 (2.5)	3 (2.5)	-
Two-way Roadway Width (m)	5	5	-



STREET VIEW

- NOTES**
- Management of pedestrians will be implement as required on site.
 - Pedestrian barrier will be used when required.
 - Permanent traffic lights must not conflict with TTM and must be turned off by client.
 - Tower Lights to be provided by the Main Contractor.
 - Safe passage through the site for emergency services will be facilitated.
 - Keep safety zones free from works, plant, materials and operatives.
 - Where surfacing takes place the following may be used:
 - *Ramps ahead
 - *Slippery road surface
 - Identify overhead electrical cables

