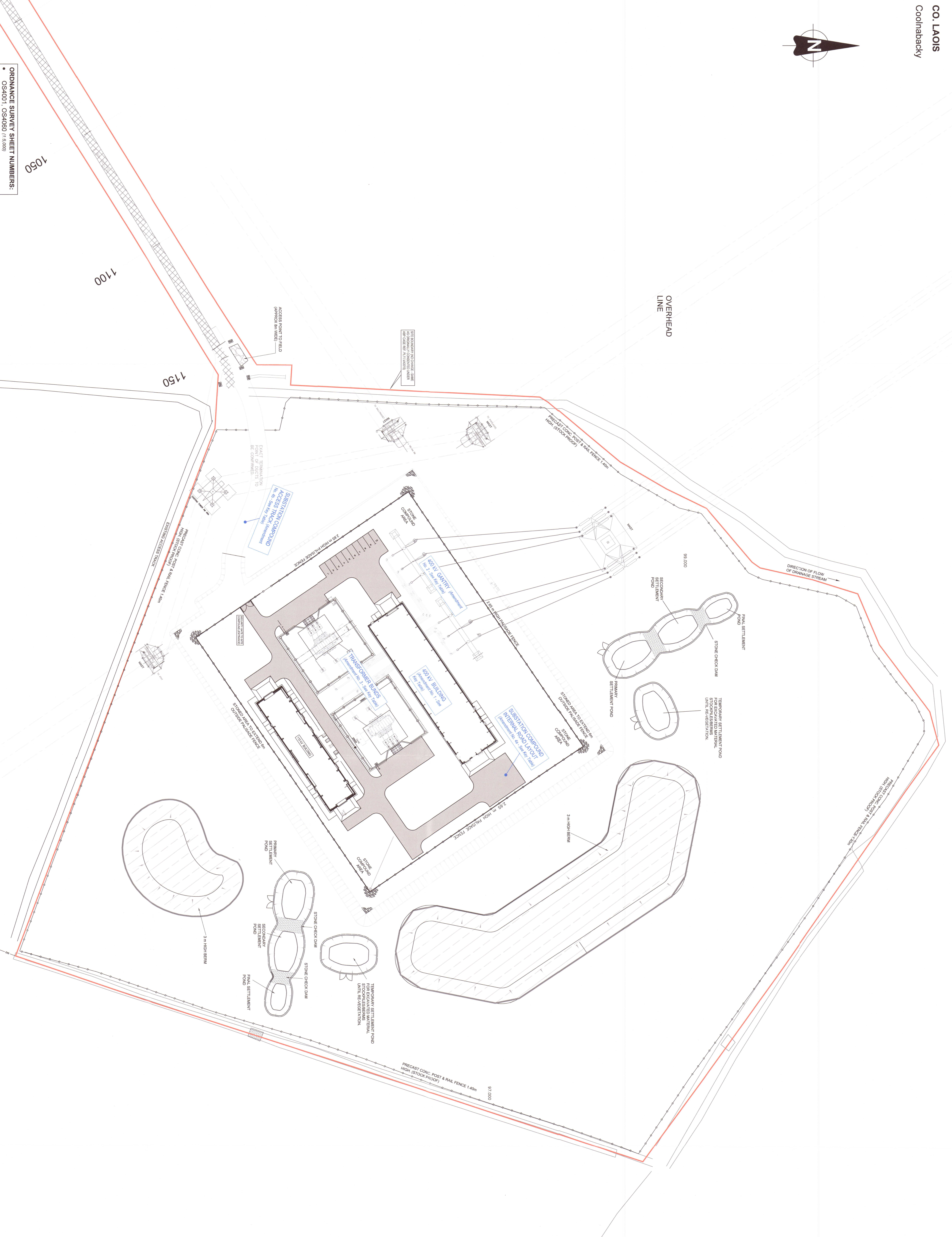


OVERHEAD  
LINE



**LEGEND**

SITE BOUNDARY (NO CHANGE - SAME AS ORIGINALLY CONSISTED UNDER ABP CASE REF. PL11/VA0015)

**KEY TABLE**

Summary of Amendments to Site Layout Plan Sought under Section 146B

Amendment No.	Description of Amendments
1	400V Substation Building: Repositioned 2 metres north of its originally consented location (ABP Case Ref. PL11/VA0015). No change in size or height.
2	400V Gantry: Slightly shifted southwest from the originally consented position (ABP Case Ref. PL11/VA0015). No change in height.
3	Transformer Bundles: Two sandstone transformer bunds (each c. 25.15m x 25.53m x 1.2m) replacing the originally consented bunds (each c. 50.5m x 11.15m x 1.2m) (ABP Case Ref. PL11/VA0015).
4a	Substation Compound Internal Road Layout: Minor reconfiguration of the internal road layout to accommodate the above amendments. They will accommodate 200% of the transfer oil capacity.
4b	Substation Compound Access Track: Slight realignment of the originally consented access track (ABP Case Ref. PL11/VA0015).
5	Substation Drainage Network: Minor adjustments to the surface water collection network in line with the revised internal road layout.

ORDNANCE SURVEY SHEET NUMBERS:  
OS4001, OS4080 (1:5,000)



**General Notes**  
(i) Plans, copies, and all will form a contractual part of the drawing. All work carried out based on these files is at the recipient's own risk. RPS will not accept any responsibility for any errors from the use of these files, either by human error by the recipient, listing of the un-dimensioned measurements, compatibility with the recipient's software, and any errors arising when these files are used to aid the recipient's drawing production.

(ii) This drawing is the property of RPS. It is a project confidential document. It must not be copied, used, or its contents divulged without prior written consent. The files and drawings created by RPS must be considered when working with this drawing.

(iii) Information including topographical survey, geotechnical investigation and utility detail used in the design have been provided by the client. RPS is not responsible for the accuracy of this information.



Scale  
1:500 @ A0  
Created on  
2008/2024  
Sheets

Project  
**SECTION 146B AMENDMENT TO APPROVED COOLINABACKY 400KV / 110KV SUBSTATION**  
(Class: Voluntary Development Project)  
Title  
Site Layout Plan - Section 146B Amendment

