



**Laois County Council
Comhairle Chontae Laoise
&
Offaly County Council
Comhairle Chontae Uíbh Fhailí**

**Portarlinton
Joint Local Area Plan
2018 – 2024**

Natura Impact Report

Portarlington Joint Local Area Plan**Natura Impact Report**

Document Stage	Document Version	Date	Prepared by
Final	2	01/10/2018	Pat Doherty MSc, MCIEEM

This report has been prepared by Minogue & Associates with all reasonable skill, care and diligence. Information report herein is based on the interpretation of data collected and has been accepted in good faith as being accurate and valid.

This report is prepared for Laois County Council and we accept no responsibility to third parties to whom this report, or any part thereof, is made known. Any such party relies on the report at their own risk.

Contents

1.0 Introduction	4
2.0 Assessment Methodology	6
Guidance	6
Background to Habitats Directive Article 6 Assessments	6
Stage 2: Appropriate Assessment Steps	7
Influence of the Appropriate Assessment Process on the Portarlington LAP	7
3.0 Overview of the Portarlington Joint LAP	9
4.0 Summary of the Screening for Appropriate Assessment	12
Screening of Material Alterations	13
5.0 Assessment of the Portarlington LAP	15
Elements of the plan that have the potential to result in significant effects	15
Material Alteration Ref. No. 4	22
Material Alteration Ref. No. 5	23
Hydrological & Water Quality Impacts	24
Habitat Loss & Disturbance to Species	24
In-Combination Effects	25
Conservation Objectives	29
Description of how the integrity of the site is likely to be affected	37
6.0 Mitigation	39
7.0 Conclusions	49
Appendix 1: Likely Significant Effects of Objectives & Policies	50

1.0 Introduction

Minogue & Associates has been commissioned by Laois County Council and Offaly County Council to prepare a Natura Impact Report (NIR) in respect of the Portarlinton Joint LAP.

The Portarlinton Joint LAP is not directly connected with or necessary for the management of any European Site and hence the requirements of Article 6(3) of the Habitats Directive and Part XAB of the Planning and Development Act 2000, apply. Section 177U(1) of the Planning and Development Act 2000 requires that a screening for appropriate assessment of, inter alia, a land use plan be carried out by a competent authority to assess, in light of best scientific knowledge, whether the proposed Plan, individually or in combination with another plan or project is likely to have a significant effect on a European site. A Screening for Appropriate Assessment assessed the potential for the project to result in likely significant effects to the following European Sites:

- River Barrow and River Nore SAC (002162);
- Mountmellick SAC (002141); and
- Slieve Bloom Mountains SPA (004160).

The Screening concluded that the Portarlinton Joint LAP has the potential to result in likely significant effects to the River Barrow and River Nore SAC. All other European Sites considered during the Screening stage have been Screened Out. These European Sites were Screened Out due to the absence of any source-pathway-receptor relationships with the plan area.

Accordingly, this NIR has been prepared to inform the Appropriate Assessment of the plan's potential to result in likely significant effects to the River Barrow and River Nore SAC and its qualifying features of interest occurring within the zone of influence of the plan. The location of the River Barrow and River Nore SAC with respect to the plan area is shown in Figure 1 below.

The remainder of this NIR is structured as follows:

Section 2: Assessment Method

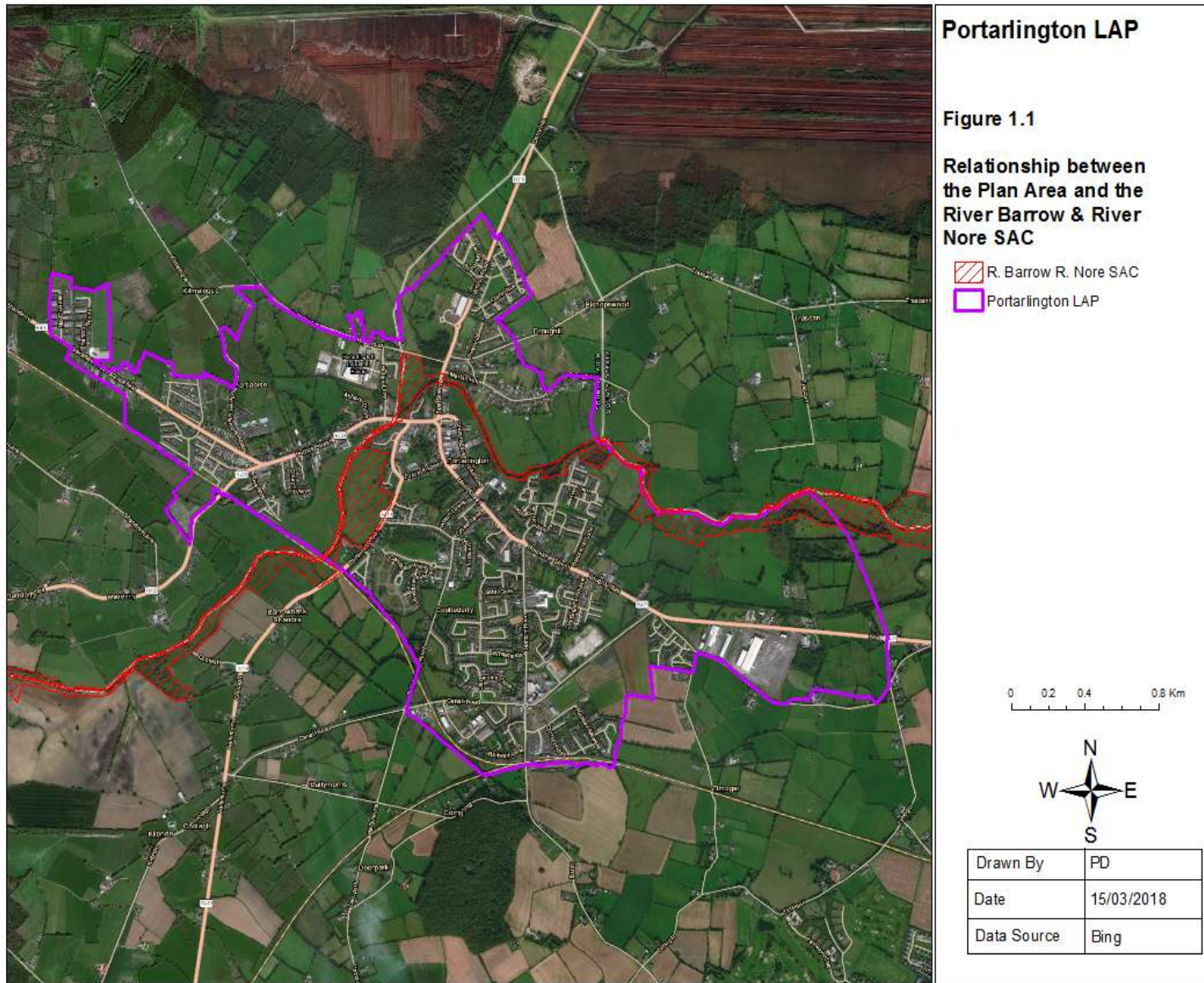
Section 3: Overview of the Portarlinton Joint LAP

Section 4: Summary of the Screening for Appropriate Assessment

Section 5: Assessment of the Portarlinton Joint LAP

Section 6: Mitigation

Section 7: Conclusions



2.0 Assessment Methodology

Guidance

This NIR has been undertaken in accordance with National and European guidance documents: *Appropriate Assessment of Plans and Projects in Ireland: Guidance for Planning Authorities* (DEHLG 2010) and *Assessment of Plans and Projects Significantly Affecting Natura 2000 sites – Methodological Guidance of the Provisions of Article 6(3) and (4) of the Habitats directive 92/43/EEC*. The following guidance documents were also of relevance during this the preparation of this NIR:

- A guide for competent authorities. Environment and Heritage Service, Sept 2002. *Appropriate Assessment of Plans and Projects in Ireland – Guidance for Planning Authorities* (2010). DEHLG.
- *Assessment of Plans and Projects Significantly Affecting Natura 2000 Sites – Methodological Guidance of the Provisions of Article 6(3) and (4) of the Habitats Directive 92/42/EED*. European Commission (2001).
- *Managing Natura 2000 Sites – The provisions of Article 6 of the Habitats directive 92/43/EEC*. European commission (2000). (To be referred to as MN 2000).
- *Communication from the Commission on the precautionary principle*. European Commission (2000).

Background to Habitats Directive Article 6 Assessments

The EC (2001) guidelines outline the stages involved in undertaking an assessment of a project under Article 6(3) and 6(4) of the Habitats Directive. The assessment process comprises the four stages outlined below. Stage 1 to 3 form part of the Article 6(3) process, while Stage 4 forms part of the Article 6(4) process. This NIR presents the findings of an assessment for Stage 2 of this assessment process.

- **Stage 1 – Screening:** This stage defines the proposed plan, establishes whether the proposed plan is necessary for the conservation management of the Natura 2000 site and assesses the likelihood of the plan to have a significant effect, alone or in combination with other plans or projects, upon a Natura 2000 site.
- **Stage 2 – Appropriate Assessment:** If a plan or project is likely to have a significant affect an Appropriate Assessment must be undertaken. In this stage the impact of the plan or project to the Conservation Objectives of the Natura 2000 site is assessed. The outcome of this assessment will establish whether the plan will have an adverse effect upon the integrity of the Natura 2000 site.
- **Stage 3 – Assessment of Alternative Solutions:** If it is concluded that, subsequent to

the implementation of mitigation measures, a plan has an adverse impact upon the integrity of a Natura 2000 site it must be objectively concluded that no alternative solutions exist before the plan can proceed.

- **Stage 4** – Where no alternative solutions exist and where adverse impacts remain but imperative reasons of overriding public interest (IROPI) exist for the implementation of a plan or project an assessment of compensatory measures that will effectively offset the damage to the Natura site 2000 will be necessary.

Stage 2: Appropriate Assessment Steps

The EC Guidance Assessment Criteria for a Stage Two Appropriate Assessment seeks the following information:

1. A description of the elements of the project that are likely to give rise to significant effects to European Sites.
2. The Setting out the Conservation Objectives of the Site.
3. A description of how the project will affect key species and key habitats.
4. A description of how the integrity of the site (determined by structure and function and conservation objectives) is likely to be affected by the project (e.g. loss of habitat, disturbance, disruption, chemical changes, hydrological changes etc.).
5. A description of the mitigation measures that are to be introduced to avoid, reduce or remedy the adverse effects on the integrity of European Sites.

Influence of the Appropriate Assessment Process on the Portarlington Joint LAP

The purpose of the Appropriate Assessment of the Portarlington Joint LAP is not only to assess the implications of this Plan on European Sites and their qualifying features of interest occurring within its zone of influence, but also to provide safeguards that aim to minimise the ecological implications of the Plan and avoid likely significant effects to European Sites. This latter element of the Appropriate Assessment process is manifest in the following scenarios:

- Where specific policies and objectives have been identified as having the potential to result in negative land use effects that could in turn result in impacts to the River Barrow and River Nore SAC, the text of the policies and objectives have been revised to minimise such effects.
- Where policies and objectives were of a more general nature that prevented the identification of specific impacts to the River Barrow and River Nore SAC, text was provided to ensure that all potential impacts arising out of these policies/objectives are assessed as part of an Appropriate Assessment at the project level.

- All policies and objectives that aim to protect the natural environment were reviewed and where necessary the text of these policies were revised to reinforce their role in safeguarding European Sites.
- All zoning maps were reviewed and assessed for likely significant effects to the River Barrow and River Nore SAC and where necessary additional mitigation measures were provided.
- Following the publication of the draft Joint LAP, material amendments proposed to the draft LAP were reviewed and screened as part of the Appropriate Assessment and preparation of this NIR. Where material amendments were identified to have the potential to result in likely significant effects to the River Barrow and River Nore SAC mitigation measures are provided to ensure that the potential significant effects are avoided at the Plan stage.

3.0 Overview of the Portarlington Joint LAP

The Portarlington Joint Local Area Plan 2018 – 2024 (LAP) has been prepared in accordance with the requirements and provisions of the Planning and Development Act 2000, as amended. The Joint LAP sets out an overall strategy for the proper planning and sustainable development of Portarlington, in the context of the Laois County Development Plan 2017 – 2023, the Offaly County Development Plan 20014 - 2020 and the Midland Regional Planning Guidelines 2010 – 2022. The Joint LAP has also been informed by Ministerial Guidelines issued pursuant to Section 28 of the Act, together with EU requirements regarding Strategic Environmental Assessment (SEA) and Appropriate Assessment (AA).

The Joint Local Area Plan comprises a written statement and accompanying maps. The written statement first outlines the strategic vision for Portarlington and lists the key objectives and policies of the Plan. It then goes on to outline policies and objectives for the following aspects of future development within the plan area:

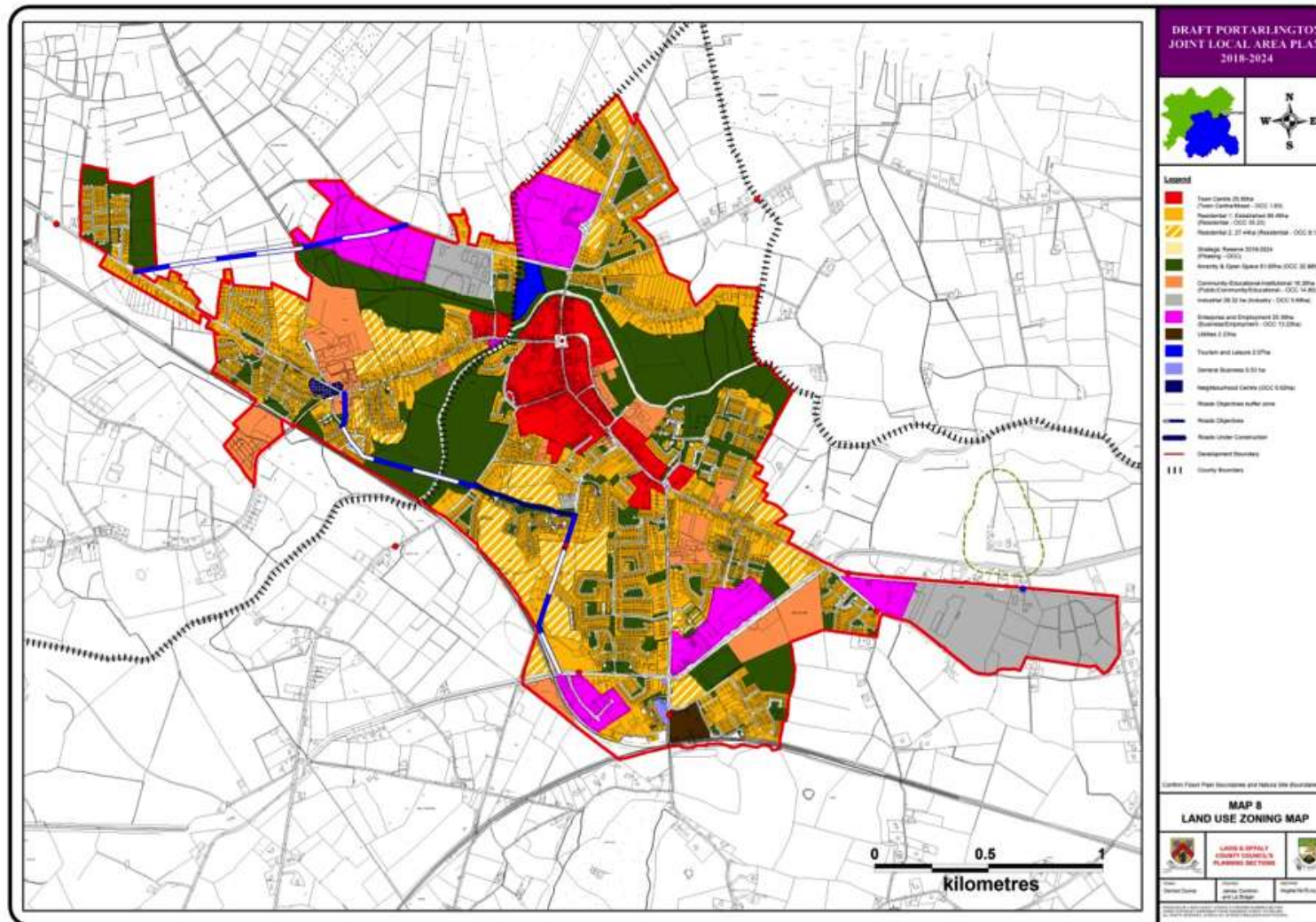
- Economic development
- Town Centre Revitalisation
- Key infrastructure
- Transport and Movement
- Housing
- Community Services & Culture
- Built heritage
- Natural Heritage
- Flood Management

The Portarlington Joint LAP also provides zoning maps for the future development of different types of land use within the plan area. The types of land use zonings and their extent are provided in Table 3.1 below. a map showing the locations of the land use zonings is provided as Figure 3.1 below.

Table 0.1: Land Use Zonings & their Extent in the Plan Area

Landuse Zoning	Amount
Town Centre (Town Centre/mixed Offaly CDP)	25.95 (1.63)
Residential R1 –Established (Residential OCC)	99.49 (35.43)
Residential 2 (Residential OCC)	32.5 (8.157)
Strategic Reserve 2018-2024 (Phasing –OCC)	
Amenity and Open Space (OCC)	61.65 (32.88)
Community-Educational-Institutional (Public/Community/Educational)	16.26 (14.80)

Landuse Zoning	Amount
Industrial (Industry-OCC)	28.32 (5.69)
Utilities	2.23
Tourism and Leisure	2.07
General Business	0.53
Neighbourhood Centre (OCC)	(0.62)



4.0 Summary of the Screening for Appropriate Assessment

A Screening Statement for Appropriate Assessment has been completed for the Portarlington LAP. This Screening was completed in line with the requirements of: Article 6(3) of the EU Habitats Directive, as transposed into Irish law in Part XAB of the Planning and Development Act 2000 (as amended) in relation to land use planning.

The Screening represents the first stage of the Article 6(3) Habitats Directive assessment process and was undertaken to identify whether the plan has the potential to result in likely significant effects to European Sites. All European Sites occurring within a 15km buffer distance of the plan area were screened for likely significant effects (the location of these sites with respect to the plan area are shown on Figure 4.1). No European Sites at a distance greater than 15km were considered during the screening as no source-pathway-receptor relationship occurs with European Sites at such distance from the plan area. The European Sites occurring within 15km of the plan area represented a preliminary list of European Sites to be screened for likely significant effects. The next step in the screening was to identify which European Sites occur within the zone of influence of the plan. The River Barrow and River Nore SAC was identified as occurring within the plan area and because of this it was automatically considered to occur within the zone of influence of the plan. For all other European Sites the zone of influence of the plan was determined by identifying the potential for pathways and connections between the plan area and these European Sites. A source-pathway-receptor approach was used during the screening for these sites, with the plan area representing the source and European Sites representing the receptors. The pathways identified during the screening were restricted to hydrological pathways and potential for interactions between the plan and mobile qualifying species of European Sites. Given that the distance between the plan area and the nearest European Site beyond the plan area is over 5km other pathways such as noise, air and visual pathways were not included as they were not considered to have the potential to function as impact pathways.

During the preliminary screening three European Sites, including the River Barrow and River Nore SAC, were identified as occurring within a 15km radius of the plan area. As mentioned above the River Barrow and River Nore SAC was automatically identified as occurring within the zone of influence of the plan. No source-pathway-receptor relationships were identified for the two other European Sites (i.e. the Slieve Blooms SPA and Mountmellick SAC).

The next step of the screening identified the qualifying features of interest of the River Barrow and River Nore SAC that occur within the zone of influence of the plan. A source-pathway-receptor model was again used with the plan representing the source and the qualifying features of interest of the SAC representing the receptors. The pathways were again restricted to hydrological and mobile species pathways. The River Barrow and River Nore SAC includes a range of features representative of terrestrial, freshwater, coastal and marine ecosystems. No source-pathway-receptor were identified between the plan and the terrestrial habitats and species of the SAC and due to the significant distance between the plan area and the coastal and marine interest features, amounting to over 100km, no functional impact pathway was identified between the plan and these features. However the freshwater qualifying habitats and species of the SAC and their relationship within the

plan area required further consideration. The qualifying feature of interest that were identified as occurring within the zone of influence of the plan are the Annex 1 habitats “Floating River Vegetation” and Tall Hydrophilous Herb Fringe and the annex 2 species: otters, Atlantic Salmon, white-clawed crayfish, brook lamprey, river lamprey, and sea lamprey. It is noted that two other freshwater dependent qualifying features of interest were screened out during the screening process. These are the freshwater pearl mussel and alluvial woodland. Both qualifying features were screened out due to the absence of a hydrological pathway connecting the plan area to the areas of the River Barrow and River Nore SAC that support these features.

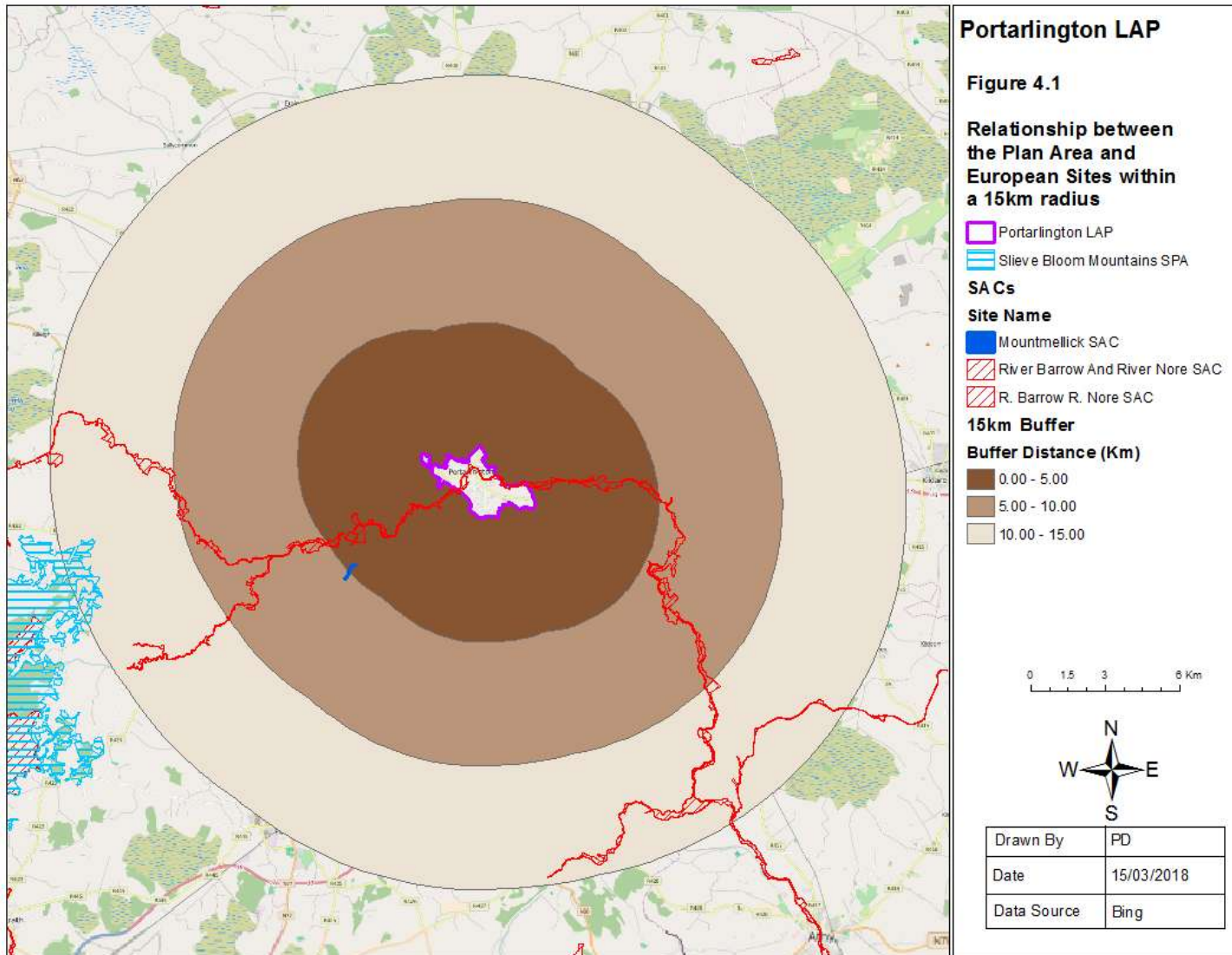
Existing threats and pressures to the freshwater qualifying features of interest occurring within the plan’s zone of influence were identified during the screening and it could not be ruled out that elements of the plan would not have the potential to exacerbate the impacts of these existing threats and pressures. Therefore the River Barrow and River Nore SAC and its freshwater qualifying features of interest occurring within the zone of influence of the plan were brought forward for stage two - Appropriate Assessment.

Screening of Material Alterations

Subsequent to the publication of the draft Joint LAP submissions were received and considered by the Planning Authority and six number material alterations to the draft LAP were proposed. These material alterations were outlined in the report *“Proposed Material Alterations to the Draft Portarlington Joint Local Area Plan 2018 – 2024”*.

Each of the proposed material alterations were screened for Appropriate Assessment. This screening is provided as Appendix 2 to this NIR. During this screening it was found that, in the absence of suitable mitigation, two of these proposed material alterations (No. 4 and No. 5) have the potential to result in likely significant effects to the River Barrow and River Nore SAC. A description of these effects are provided in Appendix 2. The potential effects to the River Barrow and River Nore SAC that were identified as a result of these material alterations relate to the potential adverse effects to the water quality of the River Barrow and potential disturbance to otters and aquatic Annex 2 species of the SAC.

The potential likely significant effects of these material alterations to the River Barrow and River Nore SAC and the mitigation measures required to avoid such effects are described in the following sections.



5.0 Assessment of the Portarlington Joint LAP

As outlined in Section 2.3 above the recommended steps for an Appropriate Assessment are as follows:

1. A description of the elements of the project that are likely to give rise to significant effects to European Sites.
2. The Setting out the Conservation Objectives of the Site.
3. A description of how the project will affect key species and key habitats.
4. A description of how the integrity of the site (determined by structure and function and conservation objectives) is likely to be affected by the project (e.g. loss of habitat, disturbance, disruption, chemical changes, hydrological changes etc.).
5. A description of the mitigation measures that are to be introduced to avoid, reduce or remedy the adverse effects on the integrity of European Sites.

Elements of the Plan that have the Potential to Result in Significant Effects

All objectives and policies of the Plan and proposed changes land use zonings were reviewed and assessed in terms of their potential to result in negative effects on the conservation status of the River Barrow and River Nore SAC. The objectives, policies and land use zonings of the Plan that have been identified as having the potential to result in negative effects are identified in Appendix 1 and Appendix 2.

Table 5.1 below summaries the objectives and policies of the Portarlington Joint LAP, as listed in Appendix 1, that have been identified as having the potential to result in potential adverse effects. Note that text coloured in bold has been proposed to mitigate the potential adverse effects of the relevant objectives/policies.

Table 0.1: Summary List of Objectives and Policies with potential to result in adverse effects to the River Barrow and River Nore SAC

Strategic Objective No. 3: To support and facilitate development on zoned land based on the policies and objectives of the Laois County Development Plan 2017-2023 and Offaly County Development Plan 2014-2020.

Strategic Objective No. 4: To focus new residential development primarily into brownfield, infill and backland sites.

<p>Strategic Objective No. 6: To develop and improve flood alleviation measures throughout the town and rural hinterland.</p>
<p>EE 09: Facilitate the development of the Derryounce Experience and Trails.</p>
<p>EE 010: Facilitate development of an historical trail through Derryounce Bog and a Heritage Museum documenting the history of the bog, turf production in the area and the former location of the town’s Power Station.</p>
<p>EE 011: Facilitate development of a green corridor connecting Derryounce Lakes and Trails, the River Barrow and The Peoples Park.</p>
<p>EE 012: Support the development of a cycleway from Derryounce Lakes and Trails to Mount Lucas.</p>
<p>EE P4: Encourage appropriate development, works and supporting infrastructure that would contribute to a high quality and attractive built and social environment in Portarlington to attract and sustain new business, residents and visitors.</p>
<p>EE P5: Encourage the establishment and expansion of services and facilities in the town at appropriate locations to facilitate the business needs of employment and enterprise developments and potential tourism needs like conference facilities, hotel, accommodation, eateries and other similar services.</p>
<p>EE P7: Support and work with Bord Na Mona and other relevant agencies in the sustainable diversification of former industrial peatlands in the Garryhinch area to uses such as green energy, eco-tourism and water storage.</p>
<p>EE P11: Continue to work with key stakeholders in the tourism industry including Waterways Ireland, Failte Ireland, Tourism Ireland, National Parks and Wildlife Service, in order to develop the overall tourist and economic potential of the town, with particular emphasis on the cultural heritage, River Barrow and Derryounce Lakes and Trails.</p>
<p>EE P13: Secure connectivity between Portarlington with county, regional and national cycle</p>

networks via former Bord na Mona rail-lines and to capture positive economic, social and cultural benefits associated with this connection.
TCR 03: Promote the consolidation of the town centre through the use of brownfield, infill and backland sites without compromising streetscapes.
TCR 04: Encourage and facilitate the appropriate reuse and regeneration of derelict, disused and vacant sites and prominent buildings including the Market House, the old cinema and Arlington House.
TCR 05: Facilitate the redevelopment of strategic opportunity sites within the town centre for a mixture of uses that will contribute to vitality of the central core area.
TCR 010: Create attractive and secure pedestrian and cycling links.
Opportunity Site 1: Former Timber Yard, Junction Of Station Rd/Canal Rd Zoning: Enterprise And Employment
Opportunity Site 2: Landholding Off Sandy Lane/ Ballymorris Road Zoning: Neighbourhood Centre
Opportunity Site 3: Avon Factory Site, Off Canal Zoning: Enterprise And Employment
Opportunity Site 4: Landholding Off Foxcroft Street Zoning: Town Centre
Opportunity Site 5: Arlington House, Foxcroft Street Zoning: Residential 1
Opportunity Site 6: Lands At Junction Of Botley Lane And Patrick Street Zoning: Town Centre

<p>Opportunity Site 7: Lands At Kilmalogue Cross Roads Zoning: Neighbourhood Centre</p>
<p>Opportunity Site 8: Lands To North Of Patrick Street Zoning: Residential</p>
<p>KI O1: Facilitate economic and social development through the provision of infrastructure and optimise the return of infrastructure investment.</p>
<p>KI O11: Facilitate, promote and encourage the expansion and improvement of telecommunications, broadband, electricity and gas networks infrastructure subject to proper planning and sustainable development.</p>
<p>KI P10: Co-operate with and facilitate the work of national telecommunications, broadband, electricity and gas network providers in the improvement, expansion and provision of energy and communication infrastructure subject to proper planning and sustainable development.</p>
<p>KI P11: Liaise with statutory bodies to investigate and encourage where possible the ducting and continued underground routing of overhead power lines in Portarlington in tandem with other work programs, such as road resurfacing and footpath construction works.</p>
<p>TM O1: Identify and agree on a route for a future outer relief road with a view to constructing a northern by pass of Portarlington.</p>
<p>TM O2: Identify and agree a route for a southern relief road from the R420 at Shanderry to the local road at Ballymorris.</p>
<p>TM O3: Reserve land for the delivery of an inner relief road connecting the R423 at Kilmalogue with the R419 at Cooltederry.</p>
<p>TM O4: Reserve land for the delivery of an inner relief road connecting the R420 at Shanderry to the local road at Kilmalogue.</p>

TM 05: Improve junction/road realignment at Kilmalogue Junction.
TM 06: Carry out necessary strengthening works to the Barrow Bridge.
TM 07: Ensure that adequate and safe bicycle and walking facilities are provided as part of any future educational, recreational and commercial developments.
TM 08: Develop a cycle network throughout the town linking population, town centre, schools, community facilities, green infrastructure and the town's train station in accordance with the principles set out in Design Manual for Urban Roads and Streets (2013) and the NTA National Cycling Manual principles and standards.
TM 09: Provide a permeable pedestrian network within the plan area which links residential areas, town centre, schools, community facilities, green infrastructure and the town's train station.
TM 010: Provide a high quality pedestrian network in the town centre area through the appropriate refurbishment of existing and the construction of new footpaths, incorporating the provision of safe crossing points and public lighting as required.
TM 012: Investigate the feasibility and promote the provision of a recreational pedestrian/ cycle route from the Peoples Park, along the River Barrow to Derrycastle Lakes and Trails.
TM 013: Facilitate the development of the Derrycastle Lakes and Trails as an integrated walking, cycling and recreational amenity trail.
TM P13: Provide an enhanced pedestrian and cycle network in Portarlington and secure full permeability in all new housing areas and in existing areas where possible.
TM P14: Promote, develop and upgrade a series of cycle lanes throughout the town for amenity and transport purposes.
H 01: Ensure that sufficient zoned land is available at appropriate locations to cater for the envisaged population growth of the Core Strategy.

H O5: To utilise the provisions of the Urban Regeneration and Housing Act 2015 (Vacant Site Levy) to facilitate the appropriate development of vacant sites (residential zoned) that are in need of renewal or regeneration.

H O8: To encourage appropriate housing development on infill and brownfield sites subject to preservation of existing residential amenity, the provision of a high quality design respecting the established character, density and layout, compliance with all traffic safety, quantitative and qualitative standards of the Laois County Development Plan 2017-2023 and Offaly County Development Plan 2014-2020.

H P1: Ensure that sufficient zoned land is available at appropriate locations to cater for the envisaged population growth of the Core Strategy.

CSC O1: Facilitate the provision of social infrastructure and to provide access to new and existing community and social facilities.

CSC O2: Facilitate the improvement and provision of community facilities, library and emergency services in appropriate locations.

CSC O3: Facilitate the improvement and provision of educational, childcare and healthcare facilities in appropriate and accessible locations.

CSC P1: Ensure provision of sufficient zoned lands to allow for expansion of existing and provision of community facilities.

CSC P2: Facilitate the development of and expansion of services, amenities and facilities to cater for all society members, ages and community groups.

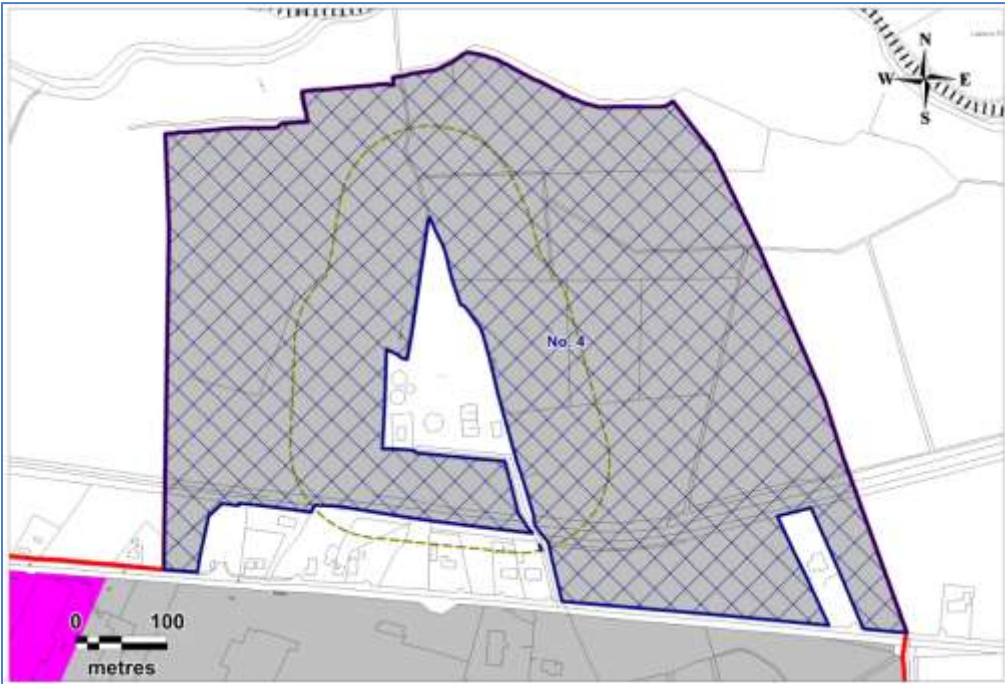
CSC P3: Facilitate the development of primary, second-level, third-level outreach, vocational and lifelong learning facilities and digital capacity for distance learning including fourth level education, lifelong learning and up-skilling.

CSC P4: Ensure the provision and implementation of primary and secondary education facilities in

concert with the planning and sustainable development of residential areas in order to maximise the opportunities for use of walking, cycling and public transport
NH 07: Promote a network of paths and cycle tracks to enhance accessibility to the Green Infrastructure network, while ensuring that the design and operation of the routes responds to the ecological protection needs of each site.
NH 08: Support the upgrading of walking and cycling trails along the River Barrow and around Derrycastle Bog and existing lakes.
NH 09: Support the development of an historical trail through Derrycastle Bog and the creation of a Heritage Museum to document the history of the bog and turf production in the area.
FM 03: To carry out infrastructural works in the Bog Road and Botley Lane areas of the town to alleviate flooding from the Blackstick Drain, a tributary of the River Barrow: (i) Raise public road levels and improve road drainage infrastructure; (ii) Improve drainage channels in Blackstick Drain and contributing drains; (iii) Refurbish all culverts to the Blackstick Drain and contributing drains.
FM 04: To carry out a programme of dredging surface water drains and to continue to ensure that the drains are regularly maintained to minimise the risk of flooding.
FM P1: In conjunction with the OPW implement a program of flood defence works for the town.

Table 5.2 below provides details on the material alterations to the draft Joint LAP, as listed in Appendix 2, that have the potential to result in adverse effects to the River Barrow and River Nore SAC.

Table 0.2: Material Alterations to the draft Joint LAP identified as having the potential to result in likely significant effects to the River Barrow and River Nore SAC

Material Alteration Ref. No. 4	
Proposed Material Alteration	<p>Change of zoning: From: Un-zoned lands To: Industrial & Warehousing at Lea Road</p> 
Potential Effects	<p>The proposed rezoning of this parcel of land from unzoned to industrial and warehousing will have the potential to result in likely significant effects to the River Barrow and River Nore SAC. The northern boundary of the proposed rezoning lands abuts the River Barrow and River Nore SAC. A review of aerial mapping suggest that wetland habitats occur within the footprint of the proposed rezoning lands and drainage ditches may link these lands to the River Barrow. It is possible that any drainage ditches, should they occur and wetland habitat occurring within the proposed rezoning lands could have the potential to support otter resting or foraging habitat. In the event that these lands have the potential to support otters, the loss of these areas will have the potential to result in habitat loss for this qualifying species of the River Barrow and River Nore SAC.</p> <p>The potential also exists for development within this area to result in disturbance to otters that may rely on the riparian corridor of the River Barrow that abuts this area and any riparian Annex I qualifying habitats of</p>

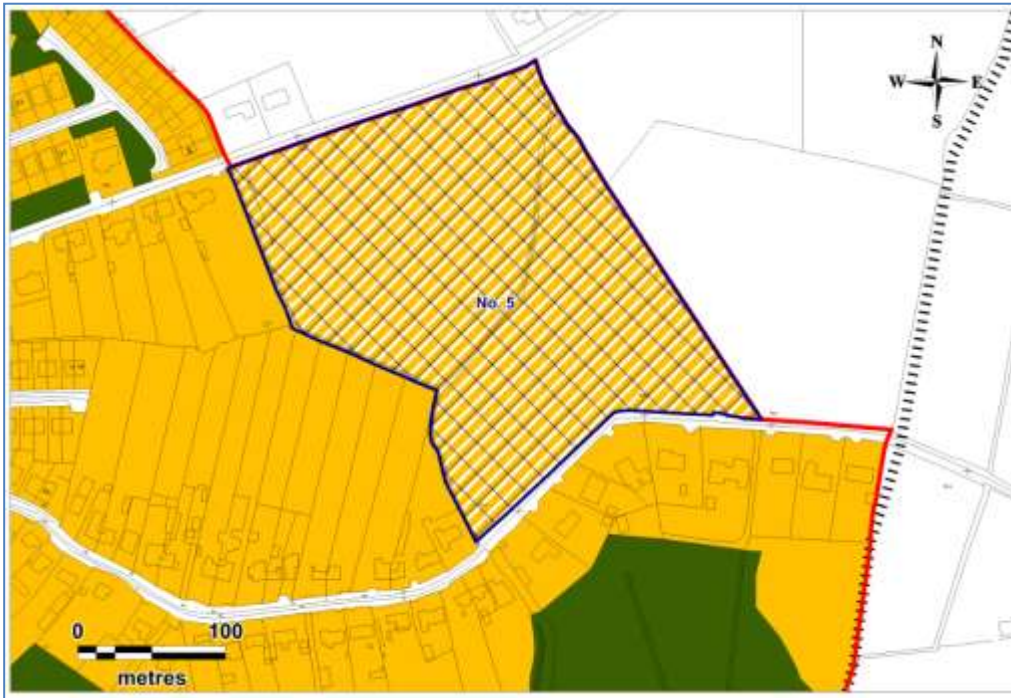
the SAC should they also abut this area.

The potential exists for activities associated with the construction phase and operation phase of the development to generate contaminated surface water and wastewater, the emission of which to the main channel of the River Barrow will have the potential to undermine water quality and adversely effect aquatic qualifying species supported by the SAC.

Material Alteration Ref. No. 5

Proposed Material Alteration

Change of zoning: From: Un-zoned lands **To:** Residential 2 on lands at Droughill



Potential Effects

This proposed parcel of land is approximately 400m from the nearest point of the River Barrow to the west. A review of aerial mapping indicates that this area supports agricultural grassland and bare ground. Drainage ditches appear to occur along the boundary of the area and these are likely to connect to the River Barrow. In the event that this parcel of land connects to the River Barrow via a hydrological pathway there is potential for activities during the conifer plantation and operation phase to generate contaminated waters and for such waters to be emitted to the SAC. In the event of such emissions the facilitation of future development within this parcel of land

	will, in the absence of appropriate mitigation measures, have the potential to, alone or in-combination with other existing threats and pressures, result in adverse effects to water quality. Any adverse effects to the water quality of the River Barrow as a result of development in these lands will have the potential to result in likely significant effects to the Conservation Objectives of the River Barrow and River Nore SAC.
--	--

Following on from the potential impacts identified in Appendix 1 and 2 the principal impacts and the related elements of the Plan with potential to cause these impacts are outlined below:

- **Hydrological & Water Quality Impacts**

Qualifying habitats and species sensitive to changes in water quality are supported by the River Barrow along and downstream of the Plan area. Developments in areas adjacent to the River Barrow or in areas connected via hydrological pathways to the River Barrow could adversely affect water quality through:

- Surface water runoff from construction sites during the construction phase of developments and impermeable surfaces during the operation phase of developments. Runoff during the construction phase of developments can become contaminated with potentially polluting material associated with construction machinery and activities. Sedimentation of River Barrow resulting from sediment-laden runoff from areas of bare soils can also occur.
- The implementation of inadequate wastewater treatment facilities for new developments could give rise to surface water and groundwater pollution resulting in downstream impacts to qualifying habitats and species. Elevations in nutrient levels and eutrophication are likely to be the principal impacts arising from the discharge of any untreated/inadequately treated wastewater from new developments.

The types of developments relating to the objectives and policies of the plan that could result in water quality affects to the River Barrow include tourism and recreational developments, developments associated with land zonings and particularly those of the identified opportunity sites and the lands associated with Material Alteration No. 4 and 5 (see Appendix 2) within the plan area, land use works associated with flood management and alleviation measures, infrastructure developments for transport, energy, communications etc.

- **Habitat Loss & Disturbance to Species**

In the absence of suitable mitigation elements of the Plan supporting development will have the potential to undermine the status of freshwater habitats supported by the River Barrow along or downstream of the plan area. The status to these freshwater habitats will be

undermined by potential water quality and hydrological effects arising from the objectives, policies and land use zonings of the Plan, that have been identified in Appendix 1 and 2 as having potential to result in adverse effects. The potential for direct impact to these habitats, should they occur within the plan area could also arise during the construction phase and operation phase of developments associated with tourism and recreation, opportunity sites, land use zonings associated with Material Alterations No. 4 and 5 and flood management and alleviation measures. Such effects will in turn have the potential to result in the loss of suitable habitat for otters, Atlantic Salmon, crayfish and lamprey species along the River Barrow within and downstream of plan area.

In-Combination Effects

An assessment for the plan to combine with other plans or project to result in cumulative effects to the River Barrow and River Nore SAC is provided in Table 5.3 below.

Table 0.3: Evaluation of Cumulative Effects with other Plans

Plan	Comment	Cumulative effects
Water Services Strategic Plan	Ireland's first integrated national plan for the delivery of water services, the Water Services Strategic Plan (WSSP) addresses six key themes and was adopted in 2015. It was subject to full SEA and AA and concluded that overall, the assessment has identified that the implementation of the draft WSSP is likely to have positive effects on the majority of the SEOs that have been used in the assessment to help characterise the environmental effects of the WSSP and no significant negative effects were identified.	No in combination impacts were predicted as a result of implementation of the Plans
Neighbouring County Development Plans	<p>These plans were subject to full SEA and AA and concluded that subject to full adherence and implementation of measures likely significant effects were not identified.</p> <p>The Offaly CDP 2014-2020 is of particular relevance and this Joint LAP has been prepared in conjunction with Offaly County Council.</p>	Regarding Offaly CDP 2014-2020, this plan has been prepared in conjunction with Offaly County Council and is a Joint LAP. Potential effects have been assessed through the SEA process of this

Plan	Comment	Cumulative effects
		Portarlington Joint LAP.
River Basin District Management Plans.	The second cycle of these plans (2015 to 2021) are currently in preparation and will provide management measures to achieve WFD Objectives upto 2021. This plan is undergoing both SEA and AA and is in draft form.	No in-combination impacts are predicted as a result of implementation of the Plans
CFRAMS Study	The Eastern CFRAM study has been commissioned in order to meet the requirements of the Floods Directive, as well as to deliver on core components of the 2004 National Flood Policy, in the Eastern district.	Flood Risk Management is being addressed in the LAP and in conjunction with the OPW. No adverse effects identified.
Laois Local Economic and Community Plan 2016-2021	The plan supports a range of high level goals, actions and objectives. It was subject to SEA and AA Screening, and was developed with support from the Forward Planning Section.	The plan is consistent with the CDP and no adverse in combination or cumulative effects are identified.
Laois Heritage Plan 2014-2019	<p>Key objectives as follows:</p> <ul style="list-style-type: none"> • Objective 1: Increase understanding of the heritage of Laois; • Objective 2: Record the heritage of Laois; • Objective 3: Protect and promote active conservation of the heritage of Laois; • Objective 4: Promote community participation in heritage plans and projects; and, • Objective 5: Promote enjoyment and accessibility of heritage sites. 	Potential for positive interactions between the Portarlington Local Area Plan and this Plan; no adverse cumulative effects identified.
Offaly County	<ul style="list-style-type: none"> • Offaly County Council Heritage related 	Positive effects

Plan	Comment	Cumulative effects
Heritage Plan 2017-2023	<p>projects such as 1916/2016 Centenary Commemorations and the follow on programme Creative Ireland; management of key county sites such as Durrow and Clonmacnoise, public realm plans and ongoing projects as they arise.</p> <ul style="list-style-type: none"> • Partnering with local communities and societies working on heritage projects, ranging from the Tidy Towns network to Historical Societies. • Heritage and Tourism – making sites accessible and improving signage and information including inputs to www.visitoffaly.ie • Developing a County Archive Service in partnership with Offaly History, the Library Service and private owners. • Medieval churches/Monastic Site conservation of the structures, management plans and access (these sites are predominantly in Offaly County Council ownership) • Publications – commissioning of and assisting with publications, specifically Offaly Castles and demesne landscapes which are currently in preparation. • Biodiversity - promotion of the National Pollinator Plan, submitting records to the National Biodiversity Data Centre and control of invasive species with particular focus on Japanese and Himalayan knotweed and Himalayan Balsam. • Access to heritage - coordinating and management of events such as Heritage Week, Offaly Naturalists’ Field Club, Annual Offaly Heritage Seminar and awareness of Offaly’s heritage through all appropriate means. 	associated with this plan particularly as they relate to awareness raising, biodiversity and alien invasive species.

Plan	Comment	Cumulative effects
Offaly Local Economic and Community Plan	<p>Strategic goals are as follows:</p> <ul style="list-style-type: none"> • Employment, Enterprise and Innovation • Education, Training and Skills • Tourism and Promoting Place • Local and Community Development • Green Energy and Sustainable Living • Empowering Communities 	<p>The LECP was subject to SEA and AA Screening and a finding of no likely significant effects was determined. Should landuse activities arise from these LECPS they will be subject to development management as detailed in the Offaly CDP 2014-2020. No adverse in combination or cumulative effects identified.</p>
Ireland's Ancient East and Laois Tourism Strategy 2018-2023	<p>A range of proposed actions and projects and targets in terms of aligning with the Ancient East and increasing tourism numbers form part of this strategy. Key project identified for Portarlington relates to the Laois Town Experience Product –</p> <p>The identification of a strong theme built on a rich bank of heritage and stories associated with the towns. The subsequent phases will focus on engaging the local tourism industry and communities to build on the opportunity it can present. For Portarlington this would relate to the links and associations of the French Huguenots.</p> <p>A secondary objective relate to promoting the Barrow Blueway potential.</p>	<p>The Town Experience product is not identified as giving rise to adverse in combination /cumulative effects.</p> <p>Proposals on the Barrow may give rise to adverse in combination effects. However, the provisions of the Laois CDP 2017-2023 are considered appropriate to address any potential in combination effects at this juncture. Policies TRANS 06 and NHO8 apply in particular.</p>

Plan	Comment	Cumulative effects
Barrow Blueway Project	<p>This project is a proposed Blueway along the Barrow Line traversing Counties Laois, Kildare and Carlow. Carlow County Council have refused the planning application whilst Laois and Kildare County Councils have approved subject to conditions.(Laois CC Planning Reference: 1737) The route does not extend to Portarlington as part of these applications. Approximately 16km is within County Laois.</p> <p>Submissions from the Department of Arts, Heritage and the Gaeltacht notes the following potential adverse effects:</p> <ul style="list-style-type: none"> • Reduction in water quality • Loss of habitats • Disturbance to habitats and species. • 	<p>No potential for cumulative effects are considered likely as this project is associated with a stretch of the River Barrow a significant distance downstream from the LAP boundary.</p>

Conservation Objectives

An overview of the generic and main conservation objectives for the River Barrow and River Nore SAC was provided in the Screening Statement for Appropriate Assessment for the Portarlington Joint LAP.

A more detailed discussion of the specific conservation objectives is outlined for the qualifying features of interest associated with European Sites brought forward for Appropriate Assessment. This is based on the published Site Specific Conservation Objectives (SSCO's) for the River Barrow and River Nore SAC (NPWS, 2011).

The overall aim of a European Site designation is the maintenance and/or restoration of the favourable conservation status for the qualifying features of interest for which it is designated. The detailed SSCOs for each of the site's interest features outline attributes and associated attribute targets for each qualifying features of interest that together represent the requirements for favourable conservation status for each of these features.

As an Appropriate Assessment of the Portarlington Joint LAP must be undertaken in view of the Conservation Objectives of the qualifying features of interest of the River Barrow and River Nore SAC occurring within its zone of influence, the SSCOs for these features represent the

parameters against which an assessment of the plan’s potential to result in likely significant effects should be undertaken. Table 5.1 lists the Conservation Objectives attributes and targets for each of these features and provides an assessment of the plan’s potential to undermine each of these targets.

Table 0.3: Assessment Of The Plan’s Potential To Result In Likely Significant Effects To The Conservation Objectives Of Qualifying Features Of Interest Occurring Within The Zone Of Influence Of The Plan

Attribute No.	Attribute	Target	Assessment
Lamprey Species			
1	Distribution (extent of anadromy for sea lamprey)	Access to all watercourses down to first order streams for brook and river lamprey. Greater than 75% of main stem length of rivers accessible from the estuary.	Any pollution to the River Barrow resulting from development promoted and facilitated by the plan could negatively affect the distribution of lamprey species within the river within and downstream of the plan area.
2	Population structure of juveniles	At least three age/size groups present	Any perturbations in water quality within the SAC as a result of land use activities facilitated by the plan will have the potential to negatively affect the population structure of juveniles within the watercourse.
3	Juvenile density in fine sediment	Mean catchment juvenile density of at least 2/m ² for river and brook lamprey and 1/m ² for sea lamprey	Any changes in water quality within the SAC as a result of land use activities facilitated by the plan will have the potential to negatively affect the population structure of juveniles within the watercourse.
4	Extent and distribution of spawning habitat	No decline in distribution and extent of spawning beds.	Juvenile spawning habitat consists of fine sediment substrates along watercourses. Adverse effects to water quality will have the potential to undermine the status of this instream habitat downstream of the plan area.
5	Availability of juvenile habitat	More than 50% of sample sites positive	Juvenile spawning habitat consists of fine sediment substrates along watercourses. Adverse effects to water quality will have the potential

			to undermine the status of this instream habitat downstream of the plan area.
Atlantic Salmon			
6	Distribution (extent of anadromy)	100% of river channels down to second order from the estuary.	Flood alleviation measures associated with the flood management objectives of the plan could have the potential to result in barriers to the movement of Atlantic Salmon within the River Barrow catchment.
7	Adult spawning fish	Conservation Limit consistently exceeded	Any adverse effects to water quality could result in a decrease in adult spawning fish downstream along the River Barrow.
8	Salmon fry abundance	Maintain or exceed 0+ fry mean catchment wide abundance threshold value. Currently set at 17 salmon fry/5 min sampling.	Any adverse effects to water quality could result in a decrease in the abundance of salmon fry within the River Barrow along and downstream of the plan area.
9	Out-migrating smolt abundance	No significant decline	Any adverse effects to water quality or barriers to the movement of fish could result in a decline in the numbers of out-migrating smolt from the sections of the SAC downstream of the plan area.
10	Number and distribution of redds	No decline in numbers or distribution	Any adverse effects to water quality could result in a decline in the numbers of spawning redds supported by the River Barrow along and downstream from the plan area.
11	Water quality	At least Q4	Any adverse effects to water quality could result in a decline in the Q-value status of the River Barrow along and downstream from the plan area.
Otters			
12	Distribution	No significant decline	Adverse water quality effects to the River Barrow along and downstream

			of the plan area could result in decline in the distribution of otters within this river. Increases in human activity along the River Barrow could result in a decline in the use of this river by otters. However it is noted that otters are not sensitive to high levels of human activity and are known to habituate to a range of human-related activities (Chanin, 2003).
13	Extent of terrestrial habitat	No significant decline	The plan will not result in a reduction in the extent of terrestrial habitat for otters within the SAC as no greenfield areas along the riparian zone of the SAC have been zoned for development within the plan area. Only existing built land occurring along or adjacent to the riparian zone of the SAC has been zoned for future development.
14	Extent of marine habitat	No significant decline	Marine habitats occurring downstream at the Barrow estuary lie outside the zone of influence of the plan and there will be no potential for the plan to result in a decline in the extent of marine habitat for otters.
15	Extent of freshwater habitat (river)	No significant decline	Any changes to water quality downstream will have the potential to result in an indirect effect to the status of freshwater habitats that could result in a decline in the availability of this habitat.
16	Extent of freshwater habitat (lakes)	No significant decline	No lakes occur within the zone of influence of the plan and as such there will be no potential for the plan to result in a decline in the extent of lake habitat for otters.
17	Couching sites and holts	No significant decline	In the event that couch sites or holts occur along the stretch of the River Barrow within the plan area, the potential will exist for disturbance to

			these critical features of otter conservation status, during development along the river that is promoted/facilitated by the plan. Key elements on the plan that could result in such effects are recreational and tourism objectives, opportunity site locations adjacent to the river and flood management objectives.
18	Fish biomass	No significant decline	Any adverse effects to water quality could result in a decline in fish biomass downstream from the plan area.
19	Barriers to connectivity	No significant increase	Flood management measures could have the potential to result in barriers to the connectivity of otter habitat along the River Barrow within the plan area.
White-clawed crayfish			
20	Distribution	No reduction from baseline.	Any adverse effects to water quality could result in a decline in the distribution of white-clawed crayfish which is known to occur along the River Barrow, downstream of the plan area.
21	Population structure: recruitment	Juveniles and/or females with eggs in at least 50% of positive samples	Any adverse effects to water quality could result in a decline in the recruitment of juveniles downstream from the plan area.
22	Negative indicator species	No alien crayfish species	Increased human activity along the River Barrow promoted by the plan will have the potential to increase the risk of spreading non-native invasive species.
23	Disease	No instances of disease	Increased human activity along the River Barrow promoted by the plan will have the potential to increase the risk of spreading disease.
24	Water quality	At least Q3-4 at all sites sampled by EPA	Any adverse effects to water quality could result in a decline in the Q-

			value status of the River Barrow downstream from the plan area.
25	Habitat quality: heterogeneity	No decline in heterogeneity or habitat quality	Adverse effect to water quality and particularly the discharge of silt-laden runoff from development areas, promoted by the plan, will have the potential to undermine this target.
Floating River Vegetation			
26	Habitat area	Area stable or increasing, subject to natural processes	Adverse effect to water quality and particularly the discharge of silt-laden runoff from development areas, promoted by the plan, to the River Barrow will have the potential to undermine this target.
27	Habitat distribution	No decline, subject to natural processes.	Adverse effect to water quality and particularly the discharge of silt-laden runoff from development areas, promoted by the plan, to the River Barrow will have the potential to undermine this target.
28	Hydrological regime: river flow	Maintain appropriate hydrological regimes	Development within the plan area leading to increased urban land cover and impermeable surfaces will have the potential to lead flashy surface water runoff to the River Barrow. Increased flow rates within this water course could in turn lead to localised changes in the flow rates of the River Barrow within and downstream of the plan area.
29	Hydrological regime: tidal influence	Maintain natural tidal regime	The plan is located at a remote distance from the coast and will not have the potential to interfere with the tidal influence along the lower River Barrow.
30	Hydrological regime: freshwater seepages	Maintain appropriate freshwater seepage regimes	No examples of freshwater seepage zones supporting this habitat occur within close proximity to the plan and therefore it will not have the potential to influence the hydrological regime of this feature.

31	Substratum composition: particle size range	The substratum should be dominated by the particle size ranges, appropriate to the habitat sub-type (frequently sands, gravels and cobbles)	Development promoted by the plan will have the potential to result in increased inputs of suspended solids to the River Barrow. Increases in suspended solids to this watercourse will have the potential result in changes to river substrates along the River Barrow.
32	Water quality: nutrients	The concentration of nutrients in the water column should be sufficiently low to prevent changes in species composition or habitat condition	Increases in populations, economic activity and development, which are promoted by the plan will have the potential to lead to an increases in wastewater generated within the plan area. The inadequate treatment of wastewater generated by such activities will have the potential to result in nutrient pollution to the River Barrow. Such an effect will also have the potential to result in nutrient pollution downstream along the River Barrow.
33	Vegetation composition: typical species	Typical species of the relevant habitat sub-type should be present and in good condition	Potential changes in water quality and hydrological regime for the reasons set out above for Attribute Nos. 28, 31 and 32 will have the potential to result in changes to the vegetation composition of this habitat.
34	Floodplain connectivity	The area of active floodplain at and upstream of the habitat should be maintained	Proposed development along the River Barrow will have the potential to result in the fragmentation of the River Barrow floodplain.
35	Riparian habitat	The area of riparian woodland at and upstream of the bryophyte-rich sub-type should be maintained	This attribute refers specifically to the mapped example of this habitat along the King's River, which is not hydrologically connected to the plan area. As such there will be no potential for the plan to undermine the targets for this attribute.
Tall Herb Fringe			
36	Habitat	No decline, subject to	Adverse effect to water quality and

	distribution	natural processes	particularly the discharge of silt-laden runoff from development areas, promoted by the plan, to the River Barrow will have the potential to undermine this target.
37	Habitat area	Area stable or increasing, subject to natural processes	Adverse effect to water quality and particularly the discharge of silt-laden runoff from development areas, promoted by the plan, to the River Barrow will have the potential to undermine this target.
38	Hydrological regime: Flooding depth/height of water table	Maintain appropriate hydrological regimes	Development within the plan area leading to increased urban land cover and impermeable surfaces will have the potential to lead flashy surface water runoff to the River Barrow. Increased flow rates within this water course could in turn lead to localised changes in the flow rates along the river downstream of the plan area or development sites.
39	Vegetation structure: sward height	30-70% of sward is between 40 and 150cm in height	Potential changes in water quality and hydrological regime for the reasons set out above for Attribute Nos. 28, 31 and 32 will have the potential to result in changes to the vegetation composition that could result in changes to the sward height of this habitat.
40	Vegetation composition: broadleaf herb: grass ratio	Broadleaf herb component of vegetation between 40 and 90%	Potential changes in water quality and hydrological regime for the reasons set out above for Attribute Nos. 28, 31 and 32 will have the potential to result in changes to the vegetation composition in terms of the ratio of the broadleaved herb component of this habitat.
41	Vegetation composition: typical species	At least 5 positive indicator species present	Potential changes in water quality and hydrological regime for the reasons set out above for Attribute Nos. 28, 31 and 32 will have the potential to result in changes to the occurrence and diversity of positive

			indicator species present for this habitat.
42	Vegetation composition: negative indicator species	Negative indicator species, particularly non-native invasive species, absent or under control- NB Indian balsam (<i>Impatiens glandulifera</i>), monkeyflower (<i>Mimulus guttatus</i>), Japanese knotweed (<i>Fallopia japonica</i>) and giant hogweed (<i>Heracleum mantegazzianum</i>)	Potential changes in water quality and hydrological regime for the reasons set out above for Attribute Nos. 28, 31 and 32 will have the potential to result in an increase in the abundant of negative indicator species, particularly nitrophile species.

Description of How the Integrity of the Site is Likely to be Affected

EU Guidelines (2001) recommend as part of a Stage 2 Appropriate Assessment that a checklist of site integrity is carried out (see Table 5.2). This aids in establishing the nature of potential adverse effects to the integrity of the European Sites, as defined by the conservation objectives of special conservation interests occurring within the zone of influence of the plan.

Table 0.4: Checklist of Site Integrity

Conservation Objectives	
Does the Plan have the potential to:	
• Cause delays in progress towards achieving the conservation objectives of the site?	Yes
• Interrupt progress towards achieving the conservation objectives of the site?	Yes
• Disrupt those factors that help to maintain the favourable conditions of the site?	Yes
• Interfere with the balance, distribution and density of key species that are the indicators	Yes

of the favourable condition of the site?	
<ul style="list-style-type: none"> • Cause changes to the vital defining aspects (e.g. nutrient balance) that determine how the site functions as a habitat or ecosystem? 	Yes
<ul style="list-style-type: none"> • Change the dynamics of the relationships (between, for example, soil and water or plants and animals) that define the structure and/or function of the site? 	Yes
<ul style="list-style-type: none"> • Interfere with predicted or expected natural changes to the site (such as water dynamics or chemical composition)? 	Yes
<ul style="list-style-type: none"> • Reduce the area of key habitats? 	Yes
<ul style="list-style-type: none"> • Reduce the population of key species? 	Yes
<ul style="list-style-type: none"> • Change the balance between key species? 	Yes
<ul style="list-style-type: none"> • Reduce diversity of the site? 	Yes
<ul style="list-style-type: none"> • Result in fragmentation? 	Yes
<ul style="list-style-type: none"> • Result in loss or reduction of key features (e.g. tree cover, tidal exposure, annual flooding, etc.)? 	Yes

6.0 Mitigation

While the Plan has sought to provide a template for the sustainable development of Portarlinton, a number of Policy and Objectives supporting individual plans and projects will have the potential to result in significant effects without the implementation of adequate environmental safeguards.

As outlined in the Plan a key consideration during its preparation has been the statutory provisions of the EU Habitats Directive. A Strategic Aim of the Plan is to seek to balance the promotion of sustainable development of Portarlinton against the need to safeguard and enhance the environmental sensitivities of the Plan area. To this end Specific Objective 7 and 8 have been included within the Plan so that overarching policies that aim to safeguard environmental sensitivities are integrated into the Plan. These Specific Objectives will ensure that the Plan will only support lower level Plans and projects that will not result in likely significant effects to European Sites.

In addition to the two overarching Specific Objectives No. 7 and 8, the Plan sets out a number of other natural heritage Policies and Objectives that aim to provide further protection for European Sites. These Policies and Objectives will ensure that all plans or projects that have the potential, either alone or in combination with other plans and project, to result in likely significant effects to European Sites and to natural heritage in general will only be supported where it can be demonstrated that no significant effects will arise.

Furthermore a number of mitigatory Policies and Objectives are included throughout the various sections of the Plan to ensure that the Plan affords protection to European Sites against specific policies and objectives that could otherwise result in likely significant effects.

A list of all Policies and Objectives affording protection to the water quality, riparian corridor and floodplain of the River Barrow and the section of the River Barrow and River Nore SAC within and downstream of the plan area are provided in Table 6.1 below. An assessment of how these Policies and Objectives will ensure the protection of European Sites is provided.

In addition to the mitigatory Policies and Objectives outlined in Table 6.1, additional mitigation is recommended for all elements of the Plan that have been identified as having the potential to result negative effects. These additional mitigation measures are outlined in Table 6.2. This Table demonstrates the direct influence of the Appropriate Assessment process on the formulation of the Plan. The rewording of Policies and Objectives, as shown in Table 6.2 sought to specifically target and annul the potential negative environmental implications associated with them. It is noted that additional mitigation has not been recommended for all potential negative elements of the plan. This is because the mitigatory measures originally included within the Plan (as outlined in Table 6.1) are deemed sufficient to ensure potential likely significant effects associated with these elements are avoided.

Table 0.1: Mitigatory objectives & Policies of the Portarlington Joint LAP

Plan Reference	Objective/Policy identified as having the potential to mitigate negative effects of the plan and safeguard the environment	Negative Objectives & Policies that will be mitigated
Strategic Aims	7. To require the preparation and assessment of all planning applications in the plan area to have regard to the information, data and requirements of the Appropriate Assessment Natura Impact Report, SEA Environmental Report and Strategic Flood Risk Assessment Report that accompany this LAP	This is a strategic aim of the Portarlington Joint LAP that sets out the approach to future development within the plan area. It aims to protect and safeguard the natural environment, of which European Sites such as the River Barrow and River Nore SAC are a critical part.
	8. To require projects to be fully informed by ecological and environmental constraints at the earliest stage of project planning and any necessary assessment to be undertaken, including assessments of disturbance to habitats and species, where required	This strategic aim of the Portarlington LAP clearly states that only those developments that can be shown not to have the potential to result in adverse effects to European Sites will be supported.
Economic Development	EE P12: Encourage and facilitate the sustainable development of the tourism potential of Portarlington in a manner that respects, builds on, protects and enhances the cultural, built and natural heritage of the town	This policy outlines a caveat for future economic development relating to tourism within the plan area, in that it seeks to support such development only where it is sensitive to natural heritage, which includes River Barrow and River Nore SAC and its Conservation Objectives.
Key Infrastructure	KI O2: Phase growth in line with the capacity of supporting infrastructure	This objectives will ensure that developments will be permitted

		where it can be demonstrated that adequate supporting infrastructure, such as wastewater treatment capacity, is in place.
	KI 03: Facilitate Irish Water in the maintenance, expansion and upgrading of wastewater disposal and water supply infrastructure	This objective will seek to ensure that adequate water services are in place during the lifetime of the plan.
	KI 04: Seek compliance with the standards and requirements of Irish Water in relation to water and wastewater infrastructure	This objective will seek to ensure that adequate water and wastewater treatment is undertaken for Portarlington during the lifetime of the plan.
	KI 06: Require all developments in Portarlington to seek a connection to the public water supply and/or public wastewater sewer where it is practical to do so	This objectives aims to ensure that all future development facilitate by the plan are connected into the main wastewater treatment facilities, thereby minimising the number of discharge locations within the plan area.
	KI 07: Protect both ground and surface water resources and to work with Irish Water to develop and implement Water Safety Plans to protect sources of public water supply and their contributing catchments.	This objective aims to maintain and conserve water supply sources for the plan area.
	KI 09: Require all new developments to include proposals for Sustainable Drainage Systems	This objective pays particular attention to the key element of the plan, namely risks to surface water quality as a result of uncontrolled storm water runoff from development sites, that

		could result in adverse effects to the River Barrow and River Nore SAC and seeks to ensure that such effects do not arise.
	KI 10: Maintain, improve and enhance the environmental and ecological quality of surface waters and groundwater in accordance with the South Eastern River Basin District River Basin Management Plan / National River Basin Management Plan for Ireland 2018-2021 (DHPLG) and associated Programme of Measures	This objective pays particular attention to the key element of the plan, namely risks to surface water quality, that could result in adverse effects to the River Barrow and River Nore SAC and seeks to ensure that such effects do not arise.
	KI O11: Ensure developments will not adversely impact on the status of waterbodies in accordance with the Water Framework Directive and South Eastern River Basin District River Basin Management Plan National River Basin Management Plan for Ireland 2018-2021 (DHPLG)	This objective pays particular attention to the key element of the plan, namely risks to surface water quality, that could result in adverse effects to the River Barrow and River Nore SAC and seeks to ensure that such effects do not arise.
	KI P1: Protect both ground and surface water resources and to work with Irish Water to develop and implement Water Safety Plans to protect sources of public water supply and their contributing catchment	This objective pays particular attention to the key element of the plan, namely risks to surface water quality, that could result in adverse effects to the River Barrow and River Nore SAC and seeks to ensure that such effects do not arise.
	KI P2: Work with Irish Water on developing and upgrading the water supply schemes so as to ensure an adequate, resilient, sustainable and economic supply of piped water	This objective seeks to ensure that a sustainable water supply is provided for Portarlington during the lifetime of the plan.

	<p>KI P3: Work with Irish Water on upgrading the wastewater treatment plant in line with the projected future growth of the settlement</p>	<p>This objective aims to ensure that adequate wastewater is provided for Portarlington during the lifetime of the plan. The successful implementation of this objective will ensure that wastewater generated by development supported by the plan does not have the potential to negatively affect the water quality of the River Barrow and the SAC within and downstream of the plan area.</p>
	<p>KI P4: Maintain and enhance, as appropriate, the existing surface water drainage system throughout the plan area and ensure that new developments are adequately serviced with surface water drainage infrastructure and promote the use of Sustainable Drainage Systems in new developments</p>	<p>This objective pays particular attention to the key element of the plan, namely risks to surface water quality as a result of uncontrolled storm water runoff from development sites, that could result in adverse effects to the River Barrow and River Nore SAC and seeks to ensure that such effects do not arise.</p>
	<p>KI P5: Promote and support the implementation of Irish Water's Eastern and Midlands Region Water Supply Project</p>	<p>This objective seeks to ensure that a sustainable water supply is provided for Portarlington during the lifetime of the plan.</p>
	<p>KI P6: Protect surface and ground water quality in accordance with the EU Water Framework Directive and Groundwater Directive</p>	<p>This objective pays particular attention to the key element of the plan, namely risks to surface water quality, that could result in adverse effects to the River Barrow and River Nore SAC and seeks to ensure that such effects do not arise.</p>

	<p>KI P7: Ensure that specific relevant objectives and measures from individual water bodies set out in the South Eastern River Basin Management Plan and associated Programme of Measures are implemented as relevant</p>	<p>This objective aligns the plan with the objectives of the Water Framework Directive, which will in turn ensure the maintenance of favourable conservation status within the River Barrow and River Nore SAC.</p>
<p>Natural Heritage</p>	<p>NH 01: Ensure an Appropriate Assessment, in accordance with Article 6(3) and Article 6(4) of the Habitats Directive and with DEHLG guidance (2009), is carried out in respect of any plan or project not directly connected with or necessary to the management of a Natura 2000 site to determine the likelihood of the plan or project having a significant effect on a Natura 2000 site, either individually or in combination with other plans or projects and to ensure that projects which may give rise to significant cumulative, direct, indirect or secondary impacts on Natura 2000 sites will not be permitted (either individually or in combination with other plans or projects) unless for reasons of overriding public interest</p>	<p>This objective aligns the plan with the Article 6(3) and 6(4) of the Eu Habitats Directive and sets out the approach to be taken to future developments during the lifetime of the plan. The implementation of this objectives will ensure that future developments will not be permitted where they will result in likely significant effects to the River Barrow and River Nore SAC (unless there are reasons of overriding public interest).</p>
	<p>NH 02: Identify, protect and conserve natural heritage sites, nationally designated conservation sites and non designated sites in co-operation and consultation with the relevant statutory authorities</p>	<p>This objective specifically aims to protect European Sites, such as the River Barrow and River Nore SAC downstream. In effect the inclusion of this objective will require proponents of all future developments to demonstrate that adverse effects to conservation status of European Sites will not arise during the lifetime of the plan.</p>

	NH 04: Identify, protect, conserve and enhance wherever possible, wildlife habitats, stepping stones, corridors and features	The River Barrow within the plan area represents a wildlife habitat and wildlife corridor. This measure affords protection to the watercourse.
	NH 010: Provide a riparian corridor of between 30 and 50 metres along the bank of the River Barrow for its ecological value and potential and to maintain it free from inappropriate Development	This objective provides protection to the riparian corridor of the River Barrow, ensuring that such habitat is not directly disturbed by future development facilitated by the plan.
	NH 012: Protect environmental quality and implement site appropriate mitigation measures with respect to air quality, water quality, greenhouse gases, climate change, light pollution, noise pollution and waste management	This objective aims to ensure that future developments do not result in significant adverse environmental effects.
	NH 013: Facilitate the work of agencies redressing the issue of terrestrial and aquatic invasive species	This objective will provide protection for the River Barrow and River Nore SAC within the plan area and downstream by aiming to minimise the spread of non-native invasive species.
	NH P1: Prohibit any development that would be harmful to or that would result in a significant deterioration of habitats and/or disturbance of species in any Special Protection Area (SPA), Special Area of Conservation (SAC) and candidate Special Area of Conservation (cSAC), Natural Heritage Area (NHA) and Proposed Natural Heritage	This objective provides protection to the River Barrow and River Nore SAC by requiring any future development facilitated by the plan to demonstrate that such developments do not result in harmful effects to the River Barrow and River Nore SAC.

	NH P2: Support and co-operate with statutory authorities and others in support of measures taken to manage proposed or designated sites in order to achieve their conservation objectives	This objective aligns the plan with the Conservation Objectives of the River Barrow and River Nore SAC.
	NH P3: Protect, enhance and further develop the Green Infrastructure network in Portarlington and to strengthen links to the wider regional network	This objectives aligns the plan with specific targets of the Conservation Objectives for the River Barrow and River Nore SAC
	NH P5: Ensure heritage assets that are the focus for tourism development are appropriately managed and their special interest conserved from potential adverse effects from visitors or development in general and that best practice standards in relation for the environmental management of tourism enterprises are adhered to	This objectives aims to ensure that future tourism developments are only facilitated by the plan where it can be demonstrated that the natural heritage and conservation status of the River Barrow and River Nore SAC is maintained.
	NH P8: Protect environmental quality in Portarlington through the implementation of European, National and Regional policy and legislation relating to air quality, water quality , greenhouse gases, climate change, light pollution, noise pollution and waste management	This objective aims to ensure that future developments do not result in significant adverse environmental effects.
Flood Management	FM 08: Adhere to the requirements of the Inland Fisheries and National Parks and Wildlife Service in the construction of any flood alleviation measures	This objectives aims to ensure that any future flood management projects are undertaken in line with the requirements of Inland Fisheries Ireland, which require as part of their remit, that native

		freshwater fisheries, including Atlantic Salmon and lamprey species, are at good ecological status.
	FM 010: Ensure protection of Natura 2000 sites supporting rivers and streams by avoiding development on flood plains and ensure flood risk assessment policies, plans or projects are compliant with Article 6 of the Habitats Directive and avoid or mitigate negative impacts on Natura 2000 sites	This objective specifically targets future flood management works by ensuring that only those management works that are compliant with the Habitats Directive are supported by the plan.

Table 0.2: Additional Mitigation Measures recommended for inclusion in the Portarlington Joint LAP

LAP	Mitigation Measure	Included in LAP Yes/No
Key Plan Objectives Additional objective:	7. To require the preparation and assessment of all planning applications in the plan area to have regard to the information, data and requirements of the Appropriate Assessment Natura Impact Report, SEA Environmental Report and Strategic Flood Risk Assessment Report that accompany this LAP	Yes
KI O10	Maintain, improve and enhance the environmental and ecological quality of surface waters and groundwater in accordance with the South Eastern River Basin District River Basin Management Plan National River Basin Management Plan for Ireland 2018-2021 (DHPLG) and associated Programme of Measures	Yes
KI O11	Ensure developments will not adversely impact on the status of waterbodies in accordance with the Water Framework Directive and South Eastern River Basin District River Basin Management Plan National River Basin Management Plan for Ireland 2018-2021	Yes

	(DHPLG)	
KI O12	Facilitate, promote and encourage the expansion and improvement of telecommunications, broadband, electricity and gas networks infrastructure subject to proper planning and sustainable development	Yes
KI P10	Co-operate with and facilitate the work of national telecommunications, broadband, electricity and gas network providers in the improvement, expansion and provision of energy and communication infrastructure subject to proper planning and sustainable development	Yes
NH O6	Carry out and require the planting of native trees, hedgerows and vegetation in all new developments	Yes
NH O12	Protect environmental quality and implement site appropriate mitigation measures with respect to air quality, greenhouse gases, climate change, light pollution, noise pollution and waste management	Yes

7.0 Conclusions

This NIR has reviewed the impacts arising from the Portarlington LAP and found that, without the implementation of mitigation measures, the Plan will have the potential to impact upon the integrity of River Barrow and River Nore SAC and its qualifying features of interest occurring within the Plan area.

The potential impacts that could negatively affect these European Sites have been outlined in Section 5 and Appendix 1 and Appendix 2 of this NIR. Section 6 outlines the environmental safeguards within the Plan that aim to ensure these potential impacts are avoided.

The requirement of the Plan to ensure Appropriate Assessment Screening and where necessary Appropriate Assessment of any future variations to the LAP, associated Plans or Projects which, alone or in combinations with other plans and project, are likely to have a significant direct or indirect impact on any European Sites will protect these Sites from potential adverse impacts.

The measures and the requirements for all new developments with the potential to adversely affect European Sites to undertake thorough assessments to inform the conclusions of Screening for Appropriate Assessment and where necessary an Appropriate Assessment will ensure adverse impacts to the integrity of the River Barrow and River Nore SAC will be identified in advance of receiving planning permission. Such developments will only be permitted where it can be shown that such adverse impacts can be mitigated or minimised so that likely significant effects will be avoided.

In summary and in light of the:

- **Original approach of the Joint LAP;**
- **Requirement as set out in the recommended strategic objectives which will ensure that likely significant effects are avoided; and**
- **Plan-level mitigation measures as outlined in Section 6 of this NIR and incorporated into the Joint LAP,**

it is considered that the adoption of the Joint LAP will not result in likely significant effects to the Conservation Objectives or integrity of European Sites, either individually or in combination with other plans or projects.

Appendix 1: Likely Significant Effects of Objectives & Policies of the Portarlington Joint LAP

Strategic Aim/Policy	Portarlington Joint LAP Policies and Objectives	Potential to Negatively Affect Water Quality	Potential to Negatively Affect Annex 1 Habitats	Potential to Negatively Affect Annex 2 Species
<p>Strategic Vision</p> <p>To develop Portarlington as a sustainable low carbon settlement centred on a vibrant town centre, utilising the location strengths to attract employment and promote the unique settlement as an attractive town in which to work, live and play, while ensuring the protection of the unique built and natural heritage and managing flood risk</p>	<p>Key Objectives: It is the objective of both Councils to:</p>			
	<p>1. To support and facilitate sustainable intensification and consolidation of the town centre and in established residential areas</p>	No	No	No
	<p>2. To promote balanced economic development and employment ensuring a diverse range of economic sectors are developed and supported</p>	No	No	No
	<p>3. To support and facilitate development on zoned land based on the policies and objectives of the Laois County Development Plan 2017-2023</p>	Yes. The support of new development within zoned lands, in areas adjacent to or hydrological linked to the River Barrow, will have the potential to result in adverse effects to water quality during the development of such infrastructure	Yes. Any adverse effects to water quality within the River Barrow will have the potential to result in adverse effects to the status of freshwater Annex 1 habitats that occur within the zone of influence of the plan	Yes. Any adverse effects to water quality within the River Barrow will have the potential to result in adverse effects to the status of freshwater Annex 2 species that occur within the zone of influence of the plan
	<p>4. To focus new residential development primarily into brownfield, infill and backland sites</p>	Yes. The support of new development within such lands, in	Yes. Any adverse effects to water quality within the	Yes. Any adverse effects to water quality within the

Strategic Aim/Policy	Portarlington Joint LAP Policies and Objectives	Potential to Negatively Affect Water Quality	Potential to Negatively Affect Annex 1 Habitats	Potential to Negatively Affect Annex 2 Species
		areas adjacent to or hydrological linked to the River Barrow, will have the potential to result in adverse effects to water quality during the development of such infrastructure	River Barrow will have the potential to result in adverse effects to the status of freshwater Annex 1 habitats that occur within the zone of influence of the plan	River Barrow will have the potential to result in adverse effects to the status of freshwater Annex 2 species that occur within the zone of influence of the plan
	<p>5. To protect, conserve and enhance the built, natural and cultural environment, through promoting awareness, utilising relevant heritage legislation and promoting good quality urban design</p>	No	No	No
	<p>6. To develop and improve flood alleviation measures throughout the town and rural hinterland</p>	Yes. The flood alleviation measures will be hydrological linked to the River Barrow and many such measures will have the potential to result in adverse effects to water quality during the development of such infrastructure	Yes. Flood alleviation measures will have the potential to undermine the status of Annex 1 habitats occurring along the river	Yes. Flood alleviation measures will have the potential to undermine the status of Annex 2 species occurring along the river

Strategic Aim/Policy	Portarlington Joint LAP Policies and Objectives	Potential to Negatively Affect Water Quality	Potential to Negatively Affect Annex 1 Habitats	Potential to Negatively Affect Annex 2 Species
	<p>7. To require the preparation and assessment of all planning applications in the plan area to have regard to the information, data and requirements of the Appropriate Assessment Natura Impact Report, SEA Environmental Report and Strategic Flood Risk Assessment Report that accompany this Joint LAP</p>	No	No	No
	<p>8. To require projects to be fully informed by ecological and environmental constraints at the earliest stage of project planning and any necessary assessment to be undertaken, including assessments of disturbance to habitats and species, where required</p>	No	No	No
	<p>Key Policies: It is the policy of both Councils to:</p>			
	<p>1. Implement the development strategies for Portarlington in order to be consistent with, and in accordance with policies of higher tier plans</p>	No	No	No
	<p>2. Support strategic enterprise and employment opportunities at other appropriate locations in Portarlington and environs, having regard to proper planning and sustainable development and relevant development control standards</p>	No	No	No
	<p>3. Facilitate and promote Portarlington's role as a "Key Service Town" as designated in the MRPGs, the Laois County Development Plan 2017-2023 and the Offaly County Development Plan 2014-2020</p>	No	No	No
	<p>4. Monitor and manage the delivery of population and</p>	No	No	No

Strategic Aim/Policy	Portarlington Joint LAP Policies and Objectives	Potential to Negatively Affect Water Quality	Potential to Negatively Affect Annex 1 Habitats	Potential to Negatively Affect Annex 2 Species
	housing in Portarlington, in line with national, regional and county level objectives, through the development strategy in this plan and also through the development management process			
	5. Facilitate and support the provision of new, and expansion of existing services, facilities and community infrastructure	No	No	No
<p>Economic Development</p> <p>Strategic Aim:</p> <p>To promote, facilitate and enable economic development and employment generation activities in appropriate locations and in a sustainable manner</p>	Objectives: It is the objective of both Councils to:			
	<p>EE01: Support the work of the Local Enterprise Offices in performing their functions of facilitating enterprise and economic development, delivering local and regional initiatives through the Laois Local Economic and Community Plan 2016-2021, Offaly Local Economic and Community Plan 2016-2021 and the Midland Action Plan for Jobs and working with key national, regional, local, public and private stakeholders to support employment opportunities in Portarlington</p>	No	No	No
	<p>EE02: Co-operate with Portarlington Community Development Association, IDA Ireland, Enterprise Ireland, the Laois Partnership Company and other agencies, organisation and individuals in promoting enterprise and employment in Portarlington</p>	No	No	No
	<p>EE03: Identify infrastructural and service deficits experienced by existing businesses, and work towards addressing these deficits</p>	No	No	No

Strategic Aim/Policy	Portarlington Joint LAP Policies and Objectives	Potential to Negatively Affect Water Quality	Potential to Negatively Affect Annex 1 Habitats	Potential to Negatively Affect Annex 2 Species
	EE04: Promote existing space available in the town for the establishment of incubator units and start-ups	No	No	No
	EE05: Facilitate the development of employment generating enterprises within existing employment areas such as the town centre, Botley Lane, Portarlington Enterprise Centre and vacant commercial premises such as Avon	No	No	No
	EE06: Promote and encourage cultural development and creative industries	No	No	No
	EE07: Promote and market Portarlington as a strong and competitive alternative location for business by highlighting distinctive attributes and characteristics	No	No	No
	EE08: Ensure that buildings proposed in the Laois Business Park and Botley Lane in the future are of a high quality design	No	No	No
	EE09: Facilitate the development of the Derryounce Experience and Trails	Yes. In the event that sections of the trails are hydrologically connected to the River Barrow there will be potential for such development to result in adverse effects to the water quality of the River Barrow	Yes. Adverse effects to water quality will have the potential to undermine the status of Annex 1 habitats occurring within the zone of influence of the plan	Yes. Adverse effects to water quality will have the potential to undermine the status of Annex 2 species occurring within the zone of influence of the plan

Strategic Aim/Policy	Portarlington Joint LAP Policies and Objectives	Potential to Negatively Affect Water Quality	Potential to Negatively Affect Annex 1 Habitats	Potential to Negatively Affect Annex 2 Species
	<p>EE010: Facilitate development of an historical trail through Derrycastle Bog and a Heritage Museum documenting the history of the bog, turf production in the area and the former location of the town’s Power Station</p>	<p>Yes. In the event that sections of the trails are hydrologically connected to the River Barrow there will be potential for such development to result in adverse effects to the water quality of the River Barrow</p>	<p>Yes. Adverse effects to water quality will have the potential to undermine the status of Annex 1 habitats occurring within the zone of influence of the plan</p>	<p>Yes. Adverse effects to water quality will have the potential to undermine the status of Annex 2 species occurring within the zone of influence of the plan</p>
	<p>EE011: Facilitate development of a green corridor connecting Derrycastle Lakes and Trails, the River Barrow and The Peoples Park</p>	<p>Yes. The development of this green corridor will be hydrological linked to the River Barrow and will have the potential to result in adverse effects to water quality during the development of such infrastructure</p>	<p>Yes. The development of this green corridor will have the potential to undermine the status of Annex 1 habitats occurring along the river</p>	<p>Yes. The development of this green corridor will have the potential to undermine the status of Annex 2 species occurring along the river</p>
	<p>EO12: Support the development of a cycleway from Derrycastle Lakes and Trails to Mount Lucas</p>	<p>Yes. In the event that sections of the cycleway are hydrologically connected to the</p>	<p>Yes. Adverse effects to water quality will have the potential to undermine the status of Annex 1</p>	<p>Yes. Adverse effects to water quality will have the potential to undermine the status of Annex 2 species</p>

Strategic Aim/Policy	Portarlington Joint LAP Policies and Objectives	Potential to Negatively Affect Water Quality	Potential to Negatively Affect Annex 1 Habitats	Potential to Negatively Affect Annex 2 Species	
		River Barrow there will be potential for such development to result in adverse effects to the water quality of the River Barrow	habitats occurring within the zone of influence of the plan	occurring within the zone of influence of the plan	
	<p>EE013: Support the provision of maps and signage for tourist facilities at locations at Portarlington Railway Station, Market Square, Main Street, Patrick Street, River Barrow, Peoples Park and Derrycastle Lakes and Trails</p>	No	No	No	
	<p>EE014: Support the continued operation and reasonable development of existing non conforming uses provided that such uses do not:</p> <ul style="list-style-type: none"> • Result in a loss of amenity to adjoining properties; • Cause an adverse impact on the environment; • Cause an adverse impact on the visual amenity or character of the area; • Inhibit the development of adjoining land in conformance with the land’s zoning objective 	No	No	No	
	<p>Policies: It is the policy of both Councils to:</p>				
	<p>EEP1: Support sustainable employment and enterprise in Portarlington through the identification of appropriately located and adequately serviced</p>	No	No	No	

Strategic Aim/Policy	Portarlinton Joint LAP Policies and Objectives	Potential to Negatively Affect Water Quality	Potential to Negatively Affect Annex 1 Habitats	Potential to Negatively Affect Annex 2 Species
	lands for business/employment, industrial and commercial developments, the promotion of investment in transportation and other support infrastructure and the creation of a high quality environment to encourage economic investment			
	EEP2: Protect employment zoned land from inappropriate development that would undermine future economic activity or the sustainable economic development and growth of the town	No	No	No
	EEP3: Facilitate employment and enterprise development in the context of the role of Portarlinton as a Key Service Town consistent with objectives of the core strategy set out in the Laois County Development Plan 2017-2023 and the Offaly County Development Plan 2014-2020	No	No	No
	EEP4: Encourage appropriate development, works and supporting infrastructure that would contribute to a high quality and attractive built and social environment in Portarlinton to attract and sustain new business, residents and visitors	Yes. In the event that related developments are hydrologically connected to the River Barrow there will be potential for such development to result in adverse effects to the water quality of the River Barrow	Yes. Adverse effects to water quality will have the potential to undermine the status of Annex 1 habitats occurring within the zone of influence of the plan	Yes. Adverse effects to water quality will have the potential to undermine the status of Annex 2 species occurring within the zone of influence of the plan

Strategic Aim/Policy	Portarlington Joint LAP Policies and Objectives	Potential to Negatively Affect Water Quality	Potential to Negatively Affect Annex 1 Habitats	Potential to Negatively Affect Annex 2 Species
	<p>EEP5: Encourage the establishment and expansion of services and facilities in the town at appropriate locations to facilitate the business needs of employment and enterprise developments and potential tourism needs like conference facilities, hotel, accommodation, eateries and other similar services</p>	<p>Yes. In the event that related developments are hydrologically connected to the River Barrow there will be potential for such development to result in adverse effects to the water quality of the River Barrow</p>	<p>Yes. Adverse effects to water quality will have the potential to undermine the status of Annex 1 habitats occurring within the zone of influence of the plan</p>	<p>Yes. Adverse effects to water quality will have the potential to undermine the status of Annex 2 species occurring within the zone of influence of the plan</p>
	<p>EEP6: Work collaboratively and in partnership with other stakeholders in the pursuit of development that would contribute positively to the economic development of the town</p>	<p>No</p>	<p>No</p>	<p>No</p>
	<p>EEP7: Support and work with Bord Na Mona and other relevant agencies in the sustainable diversification of former industrial peatlands in the Garryhinch area to uses such as green energy, eco-tourism and water storage</p>	<p>Yes. In the event that related developments are hydrologically connected to the River Barrow there will be potential for such development to result in adverse effects to the water quality of the River Barrow</p>	<p>Yes. Adverse effects to water quality will have the potential to undermine the status of Annex 1 habitats occurring within the zone of influence of the plan</p>	<p>Yes. Adverse effects to water quality will have the potential to undermine the status of Annex 2 species occurring within the zone of influence of the plan</p>


Strategic Aim/Policy	Portarlington Joint LAP Policies and Objectives	Potential to Negatively Affect Water Quality	Potential to Negatively Affect Annex 1 Habitats	Potential to Negatively Affect Annex 2 Species
	EEP8: Encourage the further development of the Portarlington third level institute as a centre of excellence for a range of education and research related uses	No	No	No
	EEP9: Work in conjunction with the town’s third level institution and neighbouring institutions including NUI Maynooth and Athlone and Carlow ITs in the creation and fostering of enterprise and research and development	No	No	No
	EEP10: Facilitate office development in commercial and employment centres	No	No	No
	EEP11: Continue to work with key stakeholders in the tourism industry including Waterways Ireland, Failte Ireland, Tourism Ireland, National Parks and Wildlife Service, in order to develop the overall tourist and economic potential of the town, with particular emphasis on the cultural heritage, River Barrow and Derrycastle Lakes and Trails	Yes. Related developments will be along and hydrological linked to the River Barrow and will have the potential to result in adverse effects to water quality during the development of such infrastructure	Yes. Related developments will be along and hydrological linked to the River Barrow and will have the potential to undermine the status of Annex 1 habitats occurring along the river	Yes. Related developments will be along and hydrological linked to the River Barrow and will have the potential to undermine the status of Annex 2 species occurring along the river
	EEP12: Encourage and facilitate the sustainable development of the tourism potential of Portarlington in a manner that respects, builds on, protects and enhances the cultural, built and natural heritage of	No	No	No

Strategic Aim/Policy	Portarlington Joint LAP Policies and Objectives	Potential to Negatively Affect Water Quality	Potential to Negatively Affect Annex 1 Habitats	Potential to Negatively Affect Annex 2 Species
	the town			
	<p>EEP13: Secure connectivity between Portarlington with county, regional and national cycle networks via former Bord na Mona rail-lines and to capture positive economic, social and cultural benefits associated with this connection</p>	<p>Yes. In the event that related developments are hydrologically connected to the River Barrow there will be potential for such development to result in adverse effects to the water quality of the River Barrow</p>	<p>Yes. Adverse effects to water quality will have the potential to undermine the status of Annex 1 habitats occurring within the zone of influence of the plan</p>	<p>Yes. Adverse effects to water quality will have the potential to undermine the status of Annex 2 species occurring within the zone of influence of the plan</p>
	<p>EEP14: Where commercial and industrial enterprises exist as nonconforming but long-established uses, to support their continued operation and reasonable expansion, in accordance with the proper planning and sustainable development of the area</p>	<p>No</p>	<p>No</p>	<p>No</p>
<p>Town Centre Revitalisation:</p> <p>Strategy Aim:</p> <p>To support the sustainable long-term growth of Portarlington, in</p>	<p>Objectives: It is the objective of both Councils to:</p>			
	<p>TCR 01: Improve the quality, vitality and vibrancy of the town centre through the implementation of public realm improvements</p>	<p>No</p>	<p>No</p>	<p>No</p>
	<p>TCR 02: Promote the town centre as a priority location for commercial, civic, social and cultural development and sustainable consolidation</p>	<p>No</p>	<p>No</p>	<p>No</p>
	<p>TCR 03: Promote the consolidation of the town centre through the use of brownfield, infill and backland sites</p>	<p>Yes. In the event that related developments</p>	<p>Yes. Adverse effects to water quality will</p>	<p>Yes. Adverse effects to water quality will</p>


Strategic Aim/Policy	Portarlington Joint LAP Policies and Objectives	Potential to Negatively Affect Water Quality	Potential to Negatively Affect Annex 1 Habitats	Potential to Negatively Affect Annex 2 Species
<p>accordance with the Core and Retail Strategies of the Laois County Development Plan 2017 – 2023 and the Offaly County Development Plan 2014-2020.</p>	<p>without compromising streetscapes</p>	<p>are hydrologically connected to the River Barrow there will be potential for such development to result in adverse effects to the water quality of the River Barrow</p>	<p>have the potential to undermine the status of Annex 1 habitats occurring within the zone of influence of the plan</p>	<p>have the potential to undermine the status of Annex 2 species occurring within the zone of influence of the plan</p>
	<p>TCR 04: Encourage and facilitate the appropriate reuse and regeneration of derelict, disused and vacant sites and prominent buildings including the Market House, the old cinema and Arlington House;</p>	<p>Yes. In the event that related developments are hydrologically connected to the River Barrow there will be potential for such development to result in adverse effects to the water quality of the River Barrow</p>	<p>Yes. Adverse effects to water quality will have the potential to undermine the status of Annex 1 habitats occurring within the zone of influence of the plan</p>	<p>Yes. Adverse effects to water quality will have the potential to undermine the status of Annex 2 species occurring within the zone of influence of the plan</p>
	<p>TCR 05: Facilitate the redevelopment of strategic opportunity sites within the town centre for a mixture of uses that will contribute to vitality of the central core area</p>	<p>Yes. In the event that related developments are hydrologically connected to the River Barrow there will be potential for</p>	<p>Yes. Adverse effects to water quality will have the potential to undermine the status of Annex 1 habitats occurring</p>	<p>Yes. Adverse effects to water quality will have the potential to undermine the status of Annex 2 species occurring within the</p>


Strategic Aim/Policy	Portarlington Joint LAP Policies and Objectives	Potential to Negatively Affect Water Quality	Potential to Negatively Affect Annex 1 Habitats	Potential to Negatively Affect Annex 2 Species
		such development to result in adverse effects to the water quality of the River Barrow	within the zone of influence of the plan	zone of influence of the plan
	TCR 06: Renew, consolidate and develop the existing fabric of the town by achieving a high quality of design in new development and refurbishments	No	No	No
	TCR 07: Ensure the type, quantum and location of future retail floor space is consistent with the requirements and recommendations of the Laois County Development Plan 2017-2023 and the Offaly County Development Plan 2014 - 2020, relevant regional policy frameworks and national planning guidelines	No	No	No
	TCR 08: Guide retail development, in accordance with the sequential approach to sustain and strengthen the town centre;	No	No	No
	TCR 09: Promote an appropriate mix of day and night time uses	No	No	No
	TCR 010: Create attractive and secure pedestrian and cycling links	Yes. In the event that related developments are hydrologically connected to the River Barrow there will be potential for	Yes. Adverse effects to water quality will have the potential to undermine the status of Annex 1 habitats occurring	Yes. Adverse effects to water quality will have the potential to undermine the status of Annex 2 species occurring within the

Strategic Aim/Policy	Portarlington Joint LAP Policies and Objectives	Potential to Negatively Affect Water Quality	Potential to Negatively Affect Annex 1 Habitats	Potential to Negatively Affect Annex 2 Species
		such development to result in adverse effects to the water quality of the River Barrow	within the zone of influence of the plan	zone of influence of the plan
	Policies: It is the policy of both Councils to:			
	TCR P1: Encourage retail development within the existing town centre. Proposals which would undermine the vitality and viability of the town centre will not be permitted. The sequential approach to retail development set out in the “Retail Planning Guidelines for Planning Authorities, 2012” will be strictly enforced	No	No	No
	TCR P2: Facilitate the revitalisation of and promote the appropriate reuse of existing town centre buildings, such as the Market Square and old cinema	No	No	No
	TCR P3: Prohibit the proliferation of uses in the town centre which would detract from the amenities of the area or the vitality and viability of the town centre	No	No	No
	TCR P4: Promote living over the shop and conversion of town centre buildings into housing units	No	No	No
	TCR P5: Encourage the maintenance of original shopfronts, or the reinstatement of traditional shopfronts where poor replacements have been installed	No	No	No
	TCR P6: Ensure new shop fronts have regard to	No	No	No


Strategic Aim/Policy	Portarlington Joint LAP Policies and Objectives	Potential to Negatively Affect Water Quality	Potential to Negatively Affect Annex 1 Habitats	Potential to Negatively Affect Annex 2 Species
	<p>existing shop fronts and complement the existing character</p> <p>TCR P7: Prohibit internally illuminated fascias or projecting box signs. Concealed strip or flood lighting of fascias and traditional hand painted signs lit by spotlight may be an acceptable alternative</p>	No	No	No
<p>Opportunity Sites</p>	<p>Opportunity Site 1: Former Timber Yard, Junction of Station Road/ Canal Road</p> <p>Zoning: Enterprise and Employment</p> 	<p>No. This opportunity site is located over 1km from the River Barrow and no surface water channels connect it to this watercourse. No existing drainage features connect it to the River Barrow.</p>	No	No


Strategic Aim/Policy	Portarlington Joint LAP Policies and Objectives	Potential to Negatively Affect Water Quality	Potential to Negatively Affect Annex 1 Habitats	Potential to Negatively Affect Annex 2 Species
	<p>Comments:</p> <ul style="list-style-type: none"> • Strategically located directly adjacent to Portarlington Railway Station and car park; • A 1.56ha. brownfield site formerly used as timber and hardware retail outlet, the buildings have been cleared and the site is vacant; • Fully serviced site; • Outside of Flood Zones A and B; • Extant permission for office and retail development over five storeys; • Opportunity to intensify development to provide a key landmark or gateway building to signify the approach and entrance to the town from the south and railway station to create a sense of arrival; • The building should address the extensive street frontage and be designed to an exceptional standard; • A high quality public realm will be required in any development. 			
	<p>Opportunity Site 2: Landholding off Sandy Lane/ Ballymorris Road Zoning: Neighbourhood Centre</p>	<p>Yes. This opportunity site is located within close proximity to the River Barrow and River Nore SAC (approximately 90m</p>	<p>Yes. Adverse effects to water quality will have the potential to undermine the status of Annex 1 habitats occurring</p>	<p>Yes. Adverse effects to water quality will have the potential to undermine the status of Annex 2 species occurring within the</p>

Strategic Aim/Policy	Portarlington Joint LAP Policies and Objectives	Potential to Negatively Affect Water Quality	Potential to Negatively Affect Annex 1 Habitats	Potential to Negatively Affect Annex 2 Species
	 <p>Comments:</p> <ul style="list-style-type: none"> • Prime location in close proximity to the town centre; • A 3.84ha. Greenfield site; • Fully serviced site; • Outside of Flood Zones A and B; • Extant permission for retail development of 7,000m²; • Suitable for a wide variety of uses subject to a Justification Test; • Mixed use developments compliant with the zoning objective will be encouraged; • The building should address the extensive street frontage and be designed to an 	<p>to the east) and in the event that a hydrological connection exists between this site and the SAC there will be potential for development works to result in adverse effects to the water quality of the River Barrow</p>	<p>within the zone of influence of the plan</p>	<p>zone of influence of the plan</p>


Strategic Aim/Policy	Portarlington Joint LAP Policies and Objectives	Potential to Negatively Affect Water Quality	Potential to Negatively Affect Annex 1 Habitats	Potential to Negatively Affect Annex 2 Species
	<p>exceptional standard;</p> <ul style="list-style-type: none"> A high quality public realm will be required in any development including pocket parks and green links between Sandy Lane and Ballymorris Road 			
	<p>Opportunity Site 3: Avon Factory Site, Off Canal Road Zoning: Enterprise and Employment</p> 	<p>Yes. This opportunity site is located approximately 700m to the southwest of the River Barrow and River Nore SAC. It is an existing area of made ground and storm water drainage sewers are presumed to link this site to the SAC. In the event that a hydrological connection exists between this site and the SAC there will be potential for development works to result in adverse effects to the water quality of the River</p>	<p>Yes. Adverse effects to water quality will have the potential to undermine the status of Annex 1 habitats occurring within the zone of influence of the plan</p>	<p>Yes. Adverse effects to water quality will have the potential to undermine the status of Annex 2 species occurring within the zone of influence of the plan</p>


Strategic Aim/Policy	Portarlington Joint LAP Policies and Objectives	Potential to Negatively Affect Water Quality	Potential to Negatively Affect Annex 1 Habitats	Potential to Negatively Affect Annex 2 Species
		Barrow		
	<p>Comments:</p> <ul style="list-style-type: none"> • Prime location in close proximity to the train station; • A 5.18ha. brownfield site currently vacant; • Fully serviced site; • Environmental considerations following previous uses of the site; • Outside of Flood Zones A and B; • Opportunity to provide a key landmark building/ enterprise campus; • Suitable for a wide variety of enterprise and employment uses including low input and emission manufacturing, campus style offices, storage, wholesale and distribution etc.; • A high quality public realm will be required in any development. 			
	<p>Opportunity Site 4: Landholding off Foxcroft Street Zoning: Town Centre</p>	<p>Yes. This opportunity site is located approximately 300m to the east of the River Barrow. It is an existing area of greenfield land and it is expected that storm</p>	<p>Yes. Adverse effects to water quality will have the potential to undermine the status of Annex 1 habitats occurring within the zone of influence of the plan</p>	<p>Yes. Adverse effects to water quality will have the potential to undermine the status of Annex 2 species occurring within the zone of influence of the plan</p>

Strategic Aim/Policy	Portarlington Joint LAP Policies and Objectives	Potential to Negatively Affect Water Quality	Potential to Negatively Affect Annex 1 Habitats	Potential to Negatively Affect Annex 2 Species
	 <p>Comments:</p> <ul style="list-style-type: none"> • Prime location adjacent to the town centre with vehicular access from Foxcroft Street and potential pedestrian access from Main Street; • A 4.08ha. greenfield, backland and infill site; • Fully serviced site; • Portion of the site is located within Flood Zone B; • Opportunity to create a sustainable and compact urban quarter with a mix of uses; • Pedestrian and cycle links and pocket parks between Main Street, Sandy Lane and Foxcroft 	<p>water from any future developments at this site will drain to the SAC. In the event that a hydrological connection exists between this site and the SAC there will be potential for development works to result in adverse effects to the water quality of the River Barrow</p>		


Strategic Aim/Policy	Portarlington Joint LAP Policies and Objectives	Potential to Negatively Affect Water Quality	Potential to Negatively Affect Annex 1 Habitats	Potential to Negatively Affect Annex 2 Species
	<p>Street should form key features to any proposal;</p> <ul style="list-style-type: none"> • Adjoining private amenity spaces of neighbouring residential properties should be protected through the design and layout of any proposal; • A high quality public realm will be required in any development 			
	<p>Opportunity Site 5: Arlington House, Foxcroft Street Zoning: Residential 1</p> 	<p>Yes. This opportunity site is located approximately 40m to the east of the River Barrow. It is an existing area of built land and it is expected that storm water from the existing lands and any future developments at this site will drain to the SAC. In the event a hydrological connection between this site and the SAC there will be potential for development</p>	<p>Yes. Adverse effects to water quality will have the potential to undermine the status of Annex 1 habitats occurring within the zone of influence of the plan</p>	<p>Yes. Adverse effects to water quality will have the potential to undermine the status of Annex 2 species occurring within the zone of influence of the plan</p>

Strategic Aim/Policy	Portarlington Joint LAP Policies and Objectives	Potential to Negatively Affect Water Quality	Potential to Negatively Affect Annex 1 Habitats	Potential to Negatively Affect Annex 2 Species
		works to result in adverse effects to the water quality of the River Barrow		
	<p>Comments:</p> <ul style="list-style-type: none"> • Prime location in close proximity to town centre; • A 0.08ha. brownfield site; • Fully serviced site; • Protected Structure on site, architectural heritage impact assessment required; • Extant permission for a major redevelopment comprising a licensed premises/cafe; • Any proposal shall have cognisance to and incorporate the existing structure “Arlington House”; • A high quality public realm will be required in any development. 			
	<p>Opportunity Site 6: Lands at Junction of Botley Lane and Patrick Street Zoning: Town Centre</p>	Yes. This opportunity site is located adjacent to the River Barrow. It is an existing area of area of built land and it is expected that storm water from the	Yes. Adverse effects to water quality will have the potential to undermine the status of Annex 1 habitats occurring within the zone of influence of the plan	Yes. Adverse effects to water quality will have the potential to undermine the status of Annex 2 species occurring within the zone of influence of the plan

Strategic Aim/Policy	Portarlinton Joint LAP Policies and Objectives	Potential to Negatively Affect Water Quality	Potential to Negatively Affect Annex 1 Habitats	Potential to Negatively Affect Annex 2 Species
	 <p>Comments:</p> <ul style="list-style-type: none"> • Prime location in close proximity to town centre; • A 0.63ha. brownfield site containing an industrial garage, storage and parking areas; • Fully serviced site; • Located within Flood Zones A and B; • Suitable for a wide variety of business and commercial uses subject to a Justification Test; • Opportunity to intensify development to provide a key landmark or gateway building; 	<p>existing lands and any future developments at this site will drain to the SAC. In the event that a hydrological connection exists between this site and the SAC there will be potential for development works to result in adverse effects to the water quality of the River Barrow</p>		

Strategic Aim/Policy	Portarlington Joint LAP Policies and Objectives	Potential to Negatively Affect Water Quality	Potential to Negatively Affect Annex 1 Habitats	Potential to Negatively Affect Annex 2 Species
	<ul style="list-style-type: none"> Any new building should address both street frontages and should be designed to an exceptional standard; A high quality public realm will be required in any development. 			
	<p>Opportunity Site 7: Lands at Kilmalogue Cross Roads Zoning: Neighbourhood Centre</p> 	<p>Yes. This opportunity site is located approximately 500m to the west of the River Barrow. It is an existing area of built land and it is expected that storm water from the existing lands and any future developments at this site will drain to the SAC. In the event that a hydrological connection exists between this site and the SAC there will be potential for development works to result in adverse</p>	<p>Yes. Adverse effects to water quality will have the potential to undermine the status of Annex 1 habitats occurring within the zone of influence of the plan</p>	<p>Yes. Adverse effects to water quality will have the potential to undermine the status of Annex 2 species occurring within the zone of influence of the plan</p>

Strategic Aim/Policy	Portarlington Joint LAP Policies and Objectives	Potential to Negatively Affect Water Quality	Potential to Negatively Affect Annex 1 Habitats	Potential to Negatively Affect Annex 2 Species
		effects to the water quality of the River Barrow		
	<p>Comments:</p> <ul style="list-style-type: none"> • Prime location in close proximity to town centre; • A 0.54ha. brownfield site containing a convenience retail space; • Fully serviced site; • Located outside of Flood Zones A and B; • Suitable for a wide variety of business, commercial and residential uses subject to a Justification Test; • Opportunity to intensify development to provide a key landmark or gateway building; • Development should comprise active frontages at ground floor level with commercial or residential uses above; • Any new building should address both street frontages and should be designed to an exceptional standard; • A high quality public realm will be required in any development 			
	<p>Opportunity Site 8: Lands to North of Patrick Street Zoning: Residential</p>	Yes. This opportunity site is located approximately 200m	Yes. Adverse effects to water quality will have the potential to	Yes. Adverse effects to water quality will have the potential to

Strategic Aim/Policy	Portarlington Joint LAP Policies and Objectives	Potential to Negatively Affect Water Quality	Potential to Negatively Affect Annex 1 Habitats	Potential to Negatively Affect Annex 2 Species
		<p>to the west of the River Barrow. It is an existing area of greenfield land and it is expected that storm water from the existing lands and any future developments at this site will drain to the SAC. In the event that a hydrological connection exists between this site and the SAC there will be potential for development works to result in adverse effects to the water quality of the River Barrow</p>	<p>undermine the status of Annex 1 habitats occurring within the zone of influence of the plan</p>	<p>undermine the status of Annex 2 species occurring within the zone of influence of the plan</p>
	<p>Comments:</p> <ul style="list-style-type: none"> • Prime location in close proximity to town centre; • A 4.73ha. brownfield site; • Located outside of Flood Zones A and B; 			

Strategic Aim/Policy	Portarlington Joint LAP Policies and Objectives	Potential to Negatively Affect Water Quality	Potential to Negatively Affect Annex 1 Habitats	Potential to Negatively Affect Annex 2 Species
	<ul style="list-style-type: none"> • A masterplan will be required in any development; • Incorporation of access points as detailed on Map 9 Objectives; • Permeability which be an integral part of any development of site and should be provided for in detail in any masterplan for the site; • The provision of new green infrastructure shall be integrated into any new developments; • Any development must respect and be sensitive to existing character of the streetscape of St. Patricks Street and presence of Protected Structures on the street; • Specially designed housing for the elderly will be considered by the Planning Authority. 			
<p>Key Infrastructure:</p> <p>Strategic Aim:</p> <p>To enable development in line with the capacity of supporting infrastructure and to require the timely provision of</p>	<p>Objectives: It is an objective of both Councils to:</p>			
	<p>KI O1: Facilitate economic and social development through the provision of infrastructure and optimise the return of infrastructure investment</p>	<p>Yes. In the event that related developments are hydrologically connected to the River Barrow there will be potential for such development to result in adverse effects to the water quality of the River</p>	<p>Yes. Adverse effects to water quality will have the potential to undermine the status of Annex 1 habitats occurring within the zone of influence of the plan</p>	<p>Yes. Adverse effects to water quality will have the potential to undermine the status of Annex 2 species occurring within the zone of influence of the plan</p>

Strategic Aim/Policy	Portarlington Joint LAP Policies and Objectives	Potential to Negatively Affect Water Quality	Potential to Negatively Affect Annex 1 Habitats	Potential to Negatively Affect Annex 2 Species
infrastructure needed for the planned development of lands		Barrow		
	KI 02: Phase growth in line with the capacity of supporting infrastructure	No	No	No
	KI 03: Facilitate Irish Water in the maintenance, expansion and upgrading of wastewater disposal and water supply infrastructure	No	No	No
	KI 04: Seek compliance with the standards and requirements of Irish Water in relation to water and wastewater infrastructure	No	No	No
	KI 05: Maintain a development free buffer around the Portarlington wastewater treatment plant of a minimum of 100 metres	No	No	No
	KI 06: Require all developments in Portarlington to seek a connection to the public water supply and/or public wastewater sewer where it is practical to do so	No	No	No
	KI 07: Protect both ground and surface water resources and to work with Irish Water to develop and implement Water Safety Plans to protect sources of public water supply and their contributing catchments	No	No	No
	KI 08: Preserve free from development the wayleaves of all public sewers and all public water mains	No	No	No
	KI 09: Require all new developments to include proposals for Sustainable Drainage Systems	No	No	No
	KI 10: Maintain, improve and enhance the environmental and ecological quality of surface	No	No	No

Strategic Aim/Policy	Portarlington Joint LAP Policies and Objectives	Potential to Negatively Affect Water Quality	Potential to Negatively Affect Annex 1 Habitats	Potential to Negatively Affect Annex 2 Species
	waters and groundwater in accordance with the South Eastern River Basin District River Basin Management Plan / National River Basin Management Plan for Ireland 2018-2021 (DHPLG) and associated Programme of Measures			
	KI O11: Ensure developments will not adversely impact on the status of waterbodies in accordance with the Water Framework Directive and South Eastern River Basin District River Basin Management Plan ; National River Basin Management Plan for Ireland 2018-2021 (DHPLG)	No	No	No
	KI O12: Facilitate, promote and encourage the expansion and improvement of telecommunications, broadband, electricity and gas networks infrastructure subject to proper planning and sustainable development	Yes. In the event that related developments are hydrologically connected to the River Barrow there will be potential for such development to result in adverse effects to the water quality of the River Barrow	Yes. Adverse effects to water quality will have the potential to undermine the status of Annex 1 habitats occurring within the zone of influence of the plan	Yes. Adverse effects to water quality will have the potential to undermine the status of Annex 2 species occurring within the zone of influence of the plan
	Policies: It is the policy of both Councils to:			
KI P1: Protect both ground and surface water resources and to work with Irish Water to develop and implement Water Safety Plans to protect sources	No	No	No	

Strategic Aim/Policy	Portarlington Joint LAP Policies and Objectives	Potential to Negatively Affect Water Quality	Potential to Negatively Affect Annex 1 Habitats	Potential to Negatively Affect Annex 2 Species
	of public water supply and their contributing catchment			
	KI P2: Work with Irish Water on developing and upgrading the water supply schemes so as to ensure an adequate, resilient, sustainable and economic supply of piped water	No	No	No
	KI P3: Work with Irish Water on upgrading the wastewater treatment plant in line with the projected future growth of the settlement	No	No	No
	KI P4: Maintain and enhance, as appropriate, the existing surface water drainage system throughout the plan area and ensure that new developments are adequately serviced with surface water drainage infrastructure and promote the use of Sustainable Drainage Systems in new developments	No	No	No
	KI P5: Promote and support the implementation of Irish Water's Eastern and Midlands Region Water Supply Project	No	No	No
	KI P6: Protect surface and ground water quality in accordance with the EU Water Framework Directive and Groundwater Directive	No	No	No
	KI P7: Ensure that specific relevant objectives and measures from individual water bodies set out in the South Eastern River Basin Management Plan and associated Programme of Measures are implemented as relevant	No	No	No

Strategic Aim/Policy	Portarlington Joint LAP Policies and Objectives	Potential to Negatively Affect Water Quality	Potential to Negatively Affect Annex 1 Habitats	Potential to Negatively Affect Annex 2 Species
	KI P8: Promote public awareness and involvement in water conservation measures by households, businesses and industries and supports the implementation of Energy Efficiency solutions in Water and Waste Water Systems	No	No	No
	KI P9: Promote and encourage the harvesting of rainwater to meet non-potable water needs	No	No	No
	KI P10: Co-operate with and facilitate the work of national telecommunications, broadband, electricity and gas network providers in the improvement, expansion and provision of energy and communication infrastructure subject to proper planning and sustainable development	Yes. In the event that related developments are hydrologically connected to the River Barrow there will be potential for such development to result in adverse effects to the water quality of the River Barrow	Yes. Adverse effects to water quality will have the potential to undermine the status of Annex 1 habitats occurring within the zone of influence of the plan	Yes. Adverse effects to water quality will have the potential to undermine the status of Annex 2 species occurring within the zone of influence of the plan
	KI P11: Liaise with statutory bodies to investigate and encourage where possible the ducting and continued underground routing of overhead power lines in Portarlington in tandem with other work programs, such as road resurfacing and footpath construction works	Yes. In the event that related developments are hydrologically connected to the River Barrow there will be potential for such development to result in adverse	Yes. Adverse effects to water quality will have the potential to undermine the status of Annex 1 habitats occurring within the zone of influence of the plan	Yes. Adverse effects to water quality will have the potential to undermine the status of Annex 2 species occurring within the zone of influence of the plan

Strategic Aim/Policy	Portarlington Joint LAP Policies and Objectives	Potential to Negatively Affect Water Quality	Potential to Negatively Affect Annex 1 Habitats	Potential to Negatively Affect Annex 2 Species
		effects to the water quality of the River Barrow		
<p>Transport and Movement</p> <p>Strategic Aim:</p> <p>To promote and facilitate a sustainable transport system that prioritises and provides for walking, cycling and public transport facilities while ensuring sufficient traffic management.</p>	<p>Objectives: It is the objective of both Councils to:</p>			
	<p>TM 01: Identify and agree on a route for a future outer relief road with a view to constructing a northern by pass of Portarlington</p>	<p>Yes. In the event that related developments are hydrologically connected to the River Barrow there will be potential for such development to result in adverse effects to the water quality of the River Barrow</p>	<p>Yes. Adverse effects to water quality will have the potential to undermine the status of Annex 1 habitats occurring within the zone of influence of the plan</p>	<p>Yes. Adverse effects to water quality will have the potential to undermine the status of Annex 2 species occurring within the zone of influence of the plan</p>
	<p>TM 02: Identify and agree a route for a southern relief road from the R420 at Shanderry to the local road at Ballymorris</p>	<p>Yes. In the event that related developments are hydrologically connected to the River Barrow there will be potential for such development to result in adverse effects to the water quality of the River Barrow</p>	<p>Yes. Adverse effects to water quality will have the potential to undermine the status of Annex 1 habitats occurring within the zone of influence of the plan</p>	<p>Yes. Adverse effects to water quality will have the potential to undermine the status of Annex 2 species occurring within the zone of influence of the plan</p>

Strategic Aim/Policy	Portarlington Joint LAP Policies and Objectives	Potential to Negatively Affect Water Quality	Potential to Negatively Affect Annex 1 Habitats	Potential to Negatively Affect Annex 2 Species
	<p>TM O3: Reserve land for the delivery of an inner relief road connecting the R423 at Kilmalogue with the R419 at Cooltederry</p>	<p>Yes. In the event that related developments are hydrologically connected to the River Barrow there will be potential for such development to result in adverse effects to the water quality of the River Barrow</p>	<p>Yes. Adverse effects to water quality will have the potential to undermine the status of Annex 1 habitats occurring within the zone of influence of the plan</p>	<p>Yes. Adverse effects to water quality will have the potential to undermine the status of Annex 2 species occurring within the zone of influence of the plan</p>
	<p>TM O4: Reserve land for the delivery of an inner relief road connecting the R420 at Shanderry to the local road at Kilmalogue</p>	<p>Yes. In the event that related developments are hydrologically connected to the River Barrow there will be potential for such development to result in adverse effects to the water quality of the River Barrow</p>	<p>Yes. Adverse effects to water quality will have the potential to undermine the status of Annex 1 habitats occurring within the zone of influence of the plan</p>	<p>Yes. Adverse effects to water quality will have the potential to undermine the status of Annex 2 species occurring within the zone of influence of the plan</p>
	<p>TM O5: Improve junction/road realignment at Kilmalogue Junction</p>	<p>Yes. In the event that related developments are hydrologically connected to the</p>	<p>Yes. Adverse effects to water quality will have the potential to undermine the</p>	<p>Yes. Adverse effects to water quality will have the potential to undermine the status</p>

Strategic Aim/Policy	Portarlington Joint LAP Policies and Objectives	Potential to Negatively Affect Water Quality	Potential to Negatively Affect Annex 1 Habitats	Potential to Negatively Affect Annex 2 Species
		River Barrow there will be potential for such development to result in adverse effects to the water quality of the River Barrow	status of Annex 1 habitats occurring within the zone of influence of the plan	of Annex 2 species occurring within the zone of influence of the plan
	TM 06: Carry out necessary strengthening works to the Barrow Bridge	Yes. Related works will be completed within the SAC and there will be potential for such works to result in adverse effects to the water quality of the River Barrow	Yes. Related works will have the potential to disturb and damage Annex 1 habitats occurring within the zone of influence of the plan	Yes. Related works will have the potential to disturb Annex 2 species and damage their habitats occurring within the zone of influence of the plan
	TM 07: Ensure that adequate and safe bicycle and walking facilities are provided as part of any future educational, recreational and commercial developments	Yes. In the event that related developments are hydrologically connected to the River Barrow there will be potential for such development to result in adverse effects to the water quality of the River	Yes. Adverse effects to water quality will have the potential to undermine the status of Annex 1 habitats occurring within the zone of influence of the plan	Yes. Adverse effects to water quality will have the potential to undermine the status of Annex 2 species occurring within the zone of influence of the plan

Strategic Aim/Policy	Portarlington Joint LAP Policies and Objectives	Potential to Negatively Affect Water Quality	Potential to Negatively Affect Annex 1 Habitats	Potential to Negatively Affect Annex 2 Species
		Barrow		
	<p>TM 08: Develop a cycle network throughout the town linking population, town centre, schools, community facilities, green infrastructure and the town’s train station in accordance with the principles set out in Design Manual for Urban Roads and Streets (2013) and the NTA National Cycling Manual principles and standards</p>	<p>Yes. In the event that related developments are hydrologically connected to the River Barrow there will be potential for such development to result in adverse effects to the water quality of the River Barrow</p>	<p>Yes. Adverse effects to water quality will have the potential to undermine the status of Annex 1 habitats occurring within the zone of influence of the plan</p>	<p>Yes. Adverse effects to water quality will have the potential to undermine the status of Annex 2 species occurring within the zone of influence of the plan</p>
	<p>TM 09: Provide a permeable pedestrian network within the plan area which links residential areas, town centre, schools, community facilities, green infrastructure and the town’s train station</p>	<p>Yes. In the event that related developments are hydrologically connected to the River Barrow there will be potential for such development to result in adverse effects to the water quality of the River Barrow</p>	<p>Yes. Adverse effects to water quality will have the potential to undermine the status of Annex 1 habitats occurring within the zone of influence of the plan</p>	<p>Yes. Adverse effects to water quality will have the potential to undermine the status of Annex 2 species occurring within the zone of influence of the plan</p>
	<p>TM 010: Provide a high quality pedestrian network in the town centre area through the appropriate refurbishment of existing and the construction of new</p>	<p>Yes. In the event that related developments are hydrologically</p>	<p>Yes. Adverse effects to water quality will have the potential to</p>	<p>Yes. Adverse effects to water quality will have the potential to</p>

Strategic Aim/Policy	Portarlington Joint LAP Policies and Objectives	Potential to Negatively Affect Water Quality	Potential to Negatively Affect Annex 1 Habitats	Potential to Negatively Affect Annex 2 Species
	footpaths, incorporating the provision of safe crossing points and public lighting as required	connected to the River Barrow there will be potential for such development to result in adverse effects to the water quality of the River Barrow	undermine the status of Annex 1 habitats occurring within the zone of influence of the plan	undermine the status of Annex 2 species occurring within the zone of influence of the plan
	TM 011: Seek funding through development contributions and/or the relevant bodies in order to finance the delivery of safe, high quality cycle and pedestrian routes and greenways throughout the town	No	No	No
	TM 012: Investigate the feasibility and promote the provision of a recreational pedestrian/ cycle route from the Peoples Park, along the River Barrow to Derrycastle Lakes and Trails	Yes. Related works for such a trail will be completed within the SAC and there will be potential for such works to result in adverse effects to the water quality of the River Barrow	Yes. Related works for such a trail will have the potential to disturb and damage Annex 1 habitats occurring within the zone of influence of the plan	Yes. Related works for such a trail will have the potential to disturb Annex 2 species and damage their habitats occurring within the zone of influence of the plan
	TM 013: Facilitate the development of the Derrycastle Lakes and Trails as an integrated walking, cycling and recreational amenity trail	Yes. In the event that related developments are hydrologically connected to the	Yes. Adverse effects to water quality will have the potential to undermine the	Yes. Adverse effects to water quality will have the potential to undermine the status

Strategic Aim/Policy	Portarlington Joint LAP Policies and Objectives	Potential to Negatively Affect Water Quality	Potential to Negatively Affect Annex 1 Habitats	Potential to Negatively Affect Annex 2 Species
		River Barrow there will be potential for such development to result in adverse effects to the water quality of the River Barrow	status of Annex 1 habitats occurring within the zone of influence of the plan	of Annex 2 species occurring within the zone of influence of the plan
	Policy: It is the policy of both Councils to:			
	TM P1: Ensure that the planning, design and implementation of all road and street networks in Portarlington accord with the principles set out in the Design Manual for Urban Roads and Streets (2013) published by the Department of Transport, Tourism and Sport along with the Department of Environment, Community and Local Government	No	No	No
	TM P2: Monitor traffic movement within the town and to provide passive traffic calming measures at appropriate locations as the need arises	No	No	No
	TM P3: Extend/upgrade public lighting throughout the town as the need arises	No	No	No
	TM P4: Ensure insofar as possible that all transport facilities and car parking within the town are accessible to people with mobility needs	No	No	No
	TM P5: Ensure all footpaths provide access for disabled and mobility impaired persons	No	No	No
	TM P6: Ensure that the design and layout of new	No	No	No

Strategic Aim/Policy	Portarlington Joint LAP Policies and Objectives	Potential to Negatively Affect Water Quality	Potential to Negatively Affect Annex 1 Habitats	Potential to Negatively Affect Annex 2 Species
	developments enables, facilitates and encourages the use of sustainable travel modes			
	TM P7: Work with all relevant public transport providers including Bus Eireann and Iarnrod Eireann to improve and expand public transport facilities and services in Portarlington and to link such facilities with the town centre and other nearby settlements	No	No	No
	TM P8: Continue to maintain and improve as required the local roads network to ensure a high standard of road quality and safety	No	No	No
	TM P9: Implement and support measures to alleviate traffic congestion within the town	No	No	No
	TM P10: Ensure that land uses within Portarlington are compatible with the safe and efficient operation of roads and associated junctions serving	No	No	No
	TM P11: Ensure that all new development contains an adequate level of vehicular and bicycle provision in accordance with the policies and standards outlined in the Development Management Standards of both the Laois and Offaly County Development Plans	No	No	No
	TM P12: Ensure adequate access points are reserved and provided to open up areas (including backland areas) for development purposes	No	No	No
	TMP13: Provide an enhanced pedestrian and cycle network in Portarlington and secure full permeability in all new housing areas and in existing areas where	Yes. In the event that related developments are hydrologically	Yes. Adverse effects to water quality will have the potential to	Yes. Adverse effects to water quality will have the potential to

Strategic Aim/Policy	Portarlinton Joint LAP Policies and Objectives	Potential to Negatively Affect Water Quality	Potential to Negatively Affect Annex 1 Habitats	Potential to Negatively Affect Annex 2 Species
	possible	connected to the River Barrow there will be potential for such development to result in adverse effects to the water quality of the River Barrow	undermine the status of Annex 1 habitats occurring within the zone of influence of the plan	undermine the status of Annex 2 species occurring within the zone of influence of the plan
	TMP 14: Promote, develop and upgrade a series of cycle lanes throughout the town for amenity and transport purposes	Yes. In the event that related developments are hydrologically connected to the River Barrow there will be potential for such development to result in adverse effects to the water quality of the River Barrow	Yes. Adverse effects to water quality will have the potential to undermine the status of Annex 1 habitats occurring within the zone of influence of the plan	Yes. Adverse effects to water quality will have the potential to undermine the status of Annex 2 species occurring within the zone of influence of the plan
<p>Housing:</p> <p>Strategy Aim:</p> <p>To deliver new residential development, to</p>	Objectives: It is the objective of both Councils to:			
	H O1: Ensure that sufficient zoned land is available at appropriate locations to cater for the envisaged population growth of the Core Strategy	The provision of zoned land for the future development of residential housing within the plan area, in areas with	Yes. Adverse effects to water quality will have the potential to undermine the status of Annex 1 habitats occurring	Yes. Adverse effects to water quality will have the potential to undermine the status of Annex 2 species occurring within the

Strategic Aim/Policy	Portarlington Joint LAP Policies and Objectives	Potential to Negatively Affect Water Quality	Potential to Negatively Affect Annex 1 Habitats	Potential to Negatively Affect Annex 2 Species
support the existing community infrastructure, recreation and amenity facilities and provide new facilities in tandem with new housing.		hydrological links to the River Barrow will have the potential to result in adverse effects to water quality during the development of such infrastructure	within the zone of influence of the plan	zone of influence of the plan
	H O2: Promote and encourage the development of the critical mass of Portarlington and to enhance its strategic location on the National and Regional road and rail network	No	No	No
	H O3: Facilitate the provision of housing in a range of locations to meet the needs of the population, with particular emphasis on facilitating access to housing to suit different household and tenure needs, in a sustainable manner	No	No	No
	H O4: To ensure compliance with the provisions of Part V of the Act (as amended) and to integrate such housing so as to prevent social segregation within residential developments	No	No	No
	H O5: To utilise the provisions of the Urban Regeneration and Housing Act 2015 (Vacant Site Levy) to facilitate the appropriate development of vacant sites (residential zoned) that are in need of renewal or regeneration	Yes. The provision of residential housing in such sites that have hydrological links to the River Barrow, will	Yes. Adverse effects to water quality will have the potential to undermine the status of Annex 1	Yes. Adverse effects to water quality will have the potential to undermine the status of Annex 2 species

Strategic Aim/Policy	Portarlington Joint LAP Policies and Objectives	Potential to Negatively Affect Water Quality	Potential to Negatively Affect Annex 1 Habitats	Potential to Negatively Affect Annex 2 Species
		have the potential to result in adverse effects to water quality during the development of such infrastructure	habitats occurring within the zone of influence of the plan	occurring within the zone of influence of the plan
	<p>H O6: To encourage the sequential development of sustainable serviced residentially zoned lands in a sustainable manner subject to compliance with relevant Department Guidelines and Development Management Standards of the Laois County Development Plan 2017 – 2023 and Offaly County Development Plan 2014 - 2020</p>	No	No	No
	<p>H O7: To promote a higher density at appropriate locations, particularly close to the town centre and public transport facilities</p>	No	No	No
	<p>H O8: To encourage appropriate housing development on infill and brownfield sites subject to preservation of existing residential amenity, the provision of a high quality design respecting the established character, density and layout, compliance with all traffic safety, quantitative and qualitative standards of the Laois County Development Plan 2017-2023 and Offaly County Development Plan 2014-2020</p>	Yes. The provision of residential housing in such sites that have hydrological links to the River Barrow, will have the potential to result in adverse effects to water quality during the development of such	Yes. Adverse effects to water quality will have the potential to undermine the status of Annex 1 habitats occurring within the zone of influence of the plan	Yes. Adverse effects to water quality will have the potential to undermine the status of Annex 2 species occurring within the zone of influence of the plan

Strategic Aim/Policy	Portarlington Joint LAP Policies and Objectives	Potential to Negatively Affect Water Quality	Potential to Negatively Affect Annex 1 Habitats	Potential to Negatively Affect Annex 2 Species
		infrastructure		
	H O9: To promote the reoccupation of vacant residential stock within Portarlington Town Centre, including ‘Living Above the Shop’ units	No	No	No
	H O10: To ensure an appropriate and sustainable mix of dwelling types, sizes and tenures to cater for all members of society, including homeless persons, the elderly, disabled and travellers	No	No	No
	H O11: To ensure provision of lifetime adaptable homes that can accommodate the changing needs of a household over time	No	No	No
	H O12: To identify, acquire and provide suitable sites, accommodation and facilities for the housing and resettlement of travelling families	No	No	No
	H O13: To secure the provision of social infrastructure, community and recreational facilities in tandem with residential development	No	No	No
	Policies: It is the policy of both Councils to:			
	H P1: Ensure that sufficient zoned land is available at appropriate locations to cater for the envisaged population growth of the Core Strategy	The provision of zoned land for the future development of residential housing within the plan area, in areas with hydrological links to the River Barrow will	Yes. Adverse effects to water quality will have the potential to undermine the status of Annex 1 habitats occurring within the zone of influence of the plan	Yes. Adverse effects to water quality will have the potential to undermine the status of Annex 2 species occurring within the zone of influence of the plan

Strategic Aim/Policy	Portarlington Joint LAP Policies and Objectives	Potential to Negatively Affect Water Quality	Potential to Negatively Affect Annex 1 Habitats	Potential to Negatively Affect Annex 2 Species
		have the potential to result in adverse effects to water quality during the development of such infrastructure		
	<p>H P2: Require all new residential developments to be consistent with the Core Strategies of the Laois County Development Plan 2107-2023 and the Offaly County Development Plan 2014-2020</p>	No	No	No
	<p>H P3: Promote and encourage the development of Portarlington and to enhance its strategic location on the National and Regional road and rail network</p>	No	No	No
	<p>H P4: Facilitate the provision of housing in a range of locations to meet the needs of the population, with particular emphasis on facilitating access to housing to suit different household and tenure needs, in a sustainable manner</p>	No	No	No
	<p>H P5: To require the creation of sustainable communities and high quality residential areas at appropriate locations with a mix tenure and adequate amenities and facilities and to meet the standards and guidance of:</p> <ul style="list-style-type: none"> • Sustainable Residential Development In Urban Areas, Guidelines for Planning Authorities, DEHG (2009); 	No	No	No

Strategic Aim/Policy	Portarlington Joint LAP Policies and Objectives	Potential to Negatively Affect Water Quality	Potential to Negatively Affect Annex 1 Habitats	Potential to Negatively Affect Annex 2 Species
	<ul style="list-style-type: none"> Sustainable Urban Housing: Design Standards for New Apartments, Guidelines for Planning Authorities (2015); The Design Manual for Urban Roads and Streets, DTTS and DECLG (2013); The development management standards of the Laois County Development Plan 2017-2023; Technical Guidance Document L – Conservation of Fuel and Energy – Dwellings. 			
<p>Community Services & Culture:</p> <p>Strategic Aim:</p> <p>To deliver, facilitate and support the provision of a broad range of high quality community, educational and cultural facilities and infrastructure to meet the needs of the population.</p>	<p>CSC O1: Facilitate the provision of social infrastructure and to provide access to new and existing community and social facilities</p> <p>CSC O2: Facilitate the improvement and provision of</p>	<p>Yes. The provision of such infrastructure in areas with hydrological links to the River Barrow, will have the potential to result in adverse effects to water quality during the development of such infrastructure</p> <p>Yes. The provision of</p>	<p>Yes. Any adverse effects to water quality within the River Barrow will have the potential to result in adverse effects to the status of freshwater Annex 1 habitats that occur within the zone of influence of the plan, downstream along the River Barrow and River Nore SAC</p> <p>Yes. Any adverse</p>	<p>Yes. Any adverse effects to water quality within the River Barrow will have the potential to result in adverse effects to the status of freshwater Annex 2 species that occur within the zone of influence of the plan, downstream along the River Barrow and River Nore SAC</p> <p>Yes. Any adverse</p>

Strategic Aim/Policy	Portarlington Joint LAP Policies and Objectives	Potential to Negatively Affect Water Quality	Potential to Negatively Affect Annex 1 Habitats	Potential to Negatively Affect Annex 2 Species
	community facilities, library and emergency services in appropriate locations	such infrastructure in areas with hydrological links to the River Barrow, will have the potential to result in adverse effects to water quality during the development of such infrastructure.	effects to water quality within the River Barrow will have the potential to result in adverse effects to the status of freshwater Annex 1 habitats that occur within the zone of influence of the plan, downstream along the River Barrow and River Nore SAC	effects to water quality within the River Barrow will have the potential to result in adverse effects to the status of freshwater Annex 2 species that occur within the zone of influence of the plan, downstream along the River Barrow and River Nore SAC
	CSC O3: Facilitate the improvement and provision of educational, childcare and healthcare facilities in appropriate and accessible locations	Yes. The provision of such infrastructure in areas with hydrological links to the River Barrow, will have the potential to result in adverse effects to water quality during the development of such infrastructure	Yes. Any adverse effects to water quality within the River Barrow will have the potential to result in adverse effects to the status of freshwater Annex 1 habitats that occur within the zone of influence of the plan, downstream	Yes. Any adverse effects to water quality within the River Barrow will have the potential to result in adverse effects to the status of freshwater Annex 2 species that occur within the zone of influence of the plan, downstream along

Strategic Aim/Policy	Portarlington Joint LAP Policies and Objectives	Potential to Negatively Affect Water Quality	Potential to Negatively Affect Annex 1 Habitats	Potential to Negatively Affect Annex 2 Species	
			along the River Barrow and River Nore SAC	the River Barrow and River Nore SAC	
	<p>CSC O4: Facilitate implementation of the Laois Age Friendly County Strategy 2016-2021</p>	No	No	No	
	<p>CSC O5: Promote the amenities and ensure the accessibility of arts and cultural facilities within the ownership of Laois and Offaly County Councils</p>	No	No	No	
	<p>CSC O6: Facilitate the roll out of community policing and neighbourhood watch schemes.</p>	No	No	No	
	<p>Policy: It is the policy of both Councils to:</p>				
	<p>CSC P1: Ensure provision of sufficient zoned lands to allow for expansion of existing and provision of community facilities</p>	<p>Yes. The provision of such infrastructure in areas with hydrological links to the River Barrow, will have the potential to result in adverse effects to water quality during the development of such infrastructure</p>	<p>Yes. Any adverse effects to water quality within the River Barrow will have the potential to result in adverse effects to the status of freshwater Annex 1 habitats that occur within the zone of influence of the plan, downstream along the River Barrow and River Nore SAC</p>	<p>Yes. Any adverse effects to water quality within the River Barrow will have the potential to result in adverse effects to the status of freshwater Annex 2 species that occur within the zone of influence of the plan, downstream along the River Barrow and River Nore SAC</p>	

Strategic Aim/Policy	Portarlington Joint LAP Policies and Objectives	Potential to Negatively Affect Water Quality	Potential to Negatively Affect Annex 1 Habitats	Potential to Negatively Affect Annex 2 Species
	<p>CSC P2: Facilitate the development of and expansion of services, amenities and facilities to cater for all society members, ages and community groups</p>	<p>Yes. The provision of such infrastructure in areas with hydrological links to the River Barrow, will have the potential to result in adverse effects to water quality during the development of such infrastructure</p>	<p>Yes. Any adverse effects to water quality within the River Barrow will have the potential to result in adverse effects to the status of freshwater Annex 1 habitats that occur within the zone of influence of the plan, downstream along the River Barrow and River Nore SAC</p>	<p>Yes. Any adverse effects to water quality within the River Barrow will have the potential to result in adverse effects to the status of freshwater Annex 2 species that occur within the zone of influence of the plan, downstream along the River Barrow and River Nore SAC</p>
	<p>CSC P3: Facilitate the development of primary, second-level, third-level outreach, vocational and lifelong learning facilities and digital capacity for distance learning including fourth level education, lifelong learning and up-skilling</p>	<p>Yes. The provision of such infrastructure in areas with hydrological links to the River Barrow, will have the potential to result in adverse effects to water quality during the development of such infrastructure</p>	<p>Yes. Any adverse effects to water quality within the River Barrow will have the potential to result in adverse effects to the status of freshwater Annex 1 habitats that occur within the zone of influence of the</p>	<p>Yes. Any adverse effects to water quality within the River Barrow will have the potential to result in adverse effects to the status of freshwater Annex 2 species that occur within the zone of influence of the plan,</p>

Strategic Aim/Policy	Portarlington Joint LAP Policies and Objectives	Potential to Negatively Affect Water Quality	Potential to Negatively Affect Annex 1 Habitats	Potential to Negatively Affect Annex 2 Species
			plan, downstream along the River Barrow and River Nore SAC	downstream along the River Barrow and River Nore SAC
	<p>CSC P4: Ensure the provision and implementation of primary and secondary education facilities in tandem with the planning and sustainable development of residential areas in order to maximise the opportunities for use of walking, cycling and public transport</p>	<p>Yes. The provision of such infrastructure in areas with hydrological links to the River Barrow, will have the potential to result in adverse effects to water quality during the development of such infrastructure</p>	<p>Yes. Any adverse effects to water quality within the River Barrow will have the potential to result in adverse effects to the status of freshwater Annex 1 habitats that occur within the zone of influence of the plan, downstream along the River Barrow and River Nore SAC</p>	<p>Yes. Any adverse effects to water quality within the River Barrow will have the potential to result in adverse effects to the status of freshwater Annex 2 species that occur within the zone of influence of the plan, downstream along the River Barrow and River Nore SAC</p>
<p>Built Heritage: Strategic Aim: To protect, conserve and manage the built heritage of the town</p>	<p>Objectives: It is the objective of both Councils to:</p>			
	<p>BH O1: Protect, conserve and enhance the built environment, through promoting awareness, utilising relevant heritage legislation and promoting good quality urban design</p>	No	No	No
	<p>BH O2: Conserve, protect and enhance the built heritage of Portarlington, including all Protected</p>	No	No	No

Strategic Aim/Policy	Portarlington Joint LAP Policies and Objectives	Potential to Negatively Affect Water Quality	Potential to Negatively Affect Annex 1 Habitats	Potential to Negatively Affect Annex 2 Species
and to encourage sensitive and sustainable development to ensure its preservation for future generations.	Structures and attendant grounds, Recorded Monuments and Places in accordance with best conservation practice			
	BH O3: Positively consider proposals to improve, alter, extend or change the use of protected structures so as to render them viable for modern use, subject to consultation with suitably qualified Conservation Architects and / or other relevant experts, suitable design, materials and construction methods	No	No	No
	BH O4: Ensure all development works on or at the sites of protected structures, including any site works necessary, shall be carried out using best heritage practice for the protection and preservation of those aspects or features of the structures / site that render it worthy of protection	No	No	No
	BH O5: Support the re-introduction of traditional features on protected structures where there is evidence that such features (e.g. window styles, finishes etc.) previously existed	No	No	No
	BH O6: Strongly resist the demolition of protected structures, unless it can be demonstrated that exceptional circumstances exist	No	No	No
	BH O7: Consider the change of use of protected structures, provided that it can be shown that the structure, character, appearance and setting will not	No	No	No

Strategic Aim/Policy	Portarlinton Joint LAP Policies and Objectives	Potential to Negatively Affect Water Quality	Potential to Negatively Affect Annex 1 Habitats	Potential to Negatively Affect Annex 2 Species
	be adversely affected or where it can be shown it is necessary to have an economic use to enable its upkeep			
	BH O8: Designate an Architectural Conservation Area in Portarlinton to ensure the protection within the traditional core of the town, of all those buildings, spaces, archaeological sites, trees, street furniture, views and other aspects of the environment which form an essential part of their character, as set out in their character appraisals	No	No	No
	BH O9: Ensure the design of any development in the traditional core of the town, including any changes of use of an existing building, should preserve and / or enhance the character and appearance of the Architectural Conservation Area as a whole	No	No	No
	BH O10: Promote schemes for the conservation and enhancement of the character and appearance of the traditional core of the town	No	No	No
	BH O11: No development in the vicinity of a feature included in the Record of Monuments & Places (RMP) will be permitted which seriously detracts from the setting of the feature or which is seriously injurious to its cultural or educational value	No	No	No
	BH O12: Ensure archaeological assessment is carried out as required and promote ‘preservation in situ’ of archaeological remains and settings in developments	No	No	No

Strategic Aim/Policy	Portarlington Joint LAP Policies and Objectives	Potential to Negatively Affect Water Quality	Potential to Negatively Affect Annex 1 Habitats	Potential to Negatively Affect Annex 2 Species	
	that would impact upon archaeological sites and/or features				
	BH O13: Protect previously unknown archaeological sites and features, including underwater sites, where they are discovered during development works	No	No	No	
	BH O14: Facilitate public access to National Monuments in State or Local Authority care	No	No	No	
	Policy: It is the policy of both Councils to:				
	BH P1: Ensure heritage assets that are the focus for tourism development are appropriately managed and their special interest conserved from potential adverse effects from visitors or development in general and that best practice standards in relation for the environmental management of tourism enterprises are adhered to	No	No	No	
	BH P2: Support and promote, with the co-operation of landowners, public access to heritage sites and features at appropriate locations whilst ensuring heritage related development does not result in negative impacts on the fabric or setting of Laois’s and Offaly’s heritage assets	No	No	No	
BH P3: Support the implementation of Ireland’s Ancient East by facilitating the provision of visitor information– in line with the policies and objectives with respect to heritage sites, and integrating the objectives of Ireland’s Ancient East with transport	No	No	No		

Strategic Aim/Policy	Portarlington Joint LAP Policies and Objectives	Potential to Negatively Affect Water Quality	Potential to Negatively Affect Annex 1 Habitats	Potential to Negatively Affect Annex 2 Species
	programmes in the Counties			
<p>Natural Heritage:</p> <p>Strategic Aim:</p> <p>To protect, enhance, create and connect natural heritage, green spaces and high quality amenity areas throughout Portarlington for biodiversity and recreation.</p>	Objectives: It is the objective of both Councils to:			
	<p>NH 01: Ensure an Appropriate Assessment, in accordance with Article 6(3) and Article 6(4) of the Habitats Directive and with DEHLG guidance (2009), is carried out in respect of any plan or project not directly connected with or necessary to the management of a Natura 2000 site to determine the likelihood of the plan or project having a significant effect on a Natura 2000 site, either individually or in combination with other plans or projects and to ensure that projects which may give rise to significant cumulative, direct, indirect or secondary impacts on Natura 2000 sites will not be permitted (either individually or in combination with other plans or projects) unless for reasons of overriding public interest</p>	No	No	No
	<p>NH 02: Identify, protect and conserve natural heritage sites, nationally designated conservation sites and non designated sites in co-operation and consultation with the relevant statutory authorities</p>	No	No	No
	<p>NH 03: Seek integration of all elements of existing green infrastructure into new developments, prevent fragmentation and mitigate potential impacts on the existing green infrastructure network</p>	No	No	No
<p>NH 04: Identify, protect, conserve and enhance</p>	No	No	No	

Strategic Aim/Policy	Portarlington Joint LAP Policies and Objectives	Potential to Negatively Affect Water Quality	Potential to Negatively Affect Annex 1 Habitats	Potential to Negatively Affect Annex 2 Species
	wherever possible, wildlife habitats, stepping stones, corridors and features			
	NH 05: Seek to preserve, protect and maintain trees of special amenity, conservation or landscape value	No	No	No
	NH 06: Carry out and require the planting of native trees, hedgerows and vegetation in all new developments	No	No	No
	NH 07: Promote a network of paths and cycle tracks to enhance accessibility to the Green Infrastructure network, while ensuring that the design and operation of the routes responds to the ecological protection needs of each site	Yes. The provision of a network of paths and tracks along or in close proximity to the River Barrow will have the potential to result in adverse impacts to the water quality of this watercourse, especially during the construction phase of infrastructure that will cater for such access	Yes. The provision of a network of paths and tracks along or in close proximity to the River Barrow will have the potential to result in adverse impacts to the water quality of this watercourse, especially during the construction phase of infrastructure that will cater for such access	Yes. The provision of a network of paths and tracks along or in close proximity to the River Barrow will have the potential to result in adverse impacts to the water quality of this watercourse, especially during the construction phase of infrastructure that will cater for such access
	NH 08: Support the upgrading of walking and cycling trails along the River Barrow and around Derrycastle Bog and existing lakes	Yes. The provision of a network of trails along or in close proximity to the River	Yes. The provision of a network of paths and tracks along or in close proximity to	Yes. The provision of a network of paths and tracks along or in close proximity to the

Strategic Aim/Policy	Portarlington Joint LAP Policies and Objectives	Potential to Negatively Affect Water Quality	Potential to Negatively Affect Annex 1 Habitats	Potential to Negatively Affect Annex 2 Species
		Barrow will have the potential to result in adverse impacts to the water quality of this watercourse, especially during the construction phase of infrastructure that will cater for such access	the River Barrow will have the potential to result in adverse impacts to the water quality of this watercourse, especially during the construction phase of infrastructure that will cater for such access	River Barrow will have the potential to result in adverse impacts to the water quality of this watercourse, especially during the construction phase of infrastructure that will cater for such access
	NH 09: Support the development of an historical trail through Derryounce Bog and the creation of a Heritage Museum to document the history of the bog and turf production in the area	Yes. The provision of a network of paths and tracks along or in close proximity to the River Barrow will have the potential to result in adverse impacts to the water quality of this watercourse, especially during the construction phase of infrastructure that will cater for such access	Yes. The provision of a network of paths and tracks along or in close proximity to the River Barrow will have the potential to result in adverse impacts to the water quality of this watercourse, especially during the construction phase of infrastructure that will cater for such access	Yes. The provision of a network of paths and tracks along or in close proximity to the River Barrow will have the potential to result in adverse impacts to the water quality of this watercourse, especially during the construction phase of infrastructure that will cater for such access

Strategic Aim/Policy	Portarlington Joint LAP Policies and Objectives	Potential to Negatively Affect Water Quality	Potential to Negatively Affect Annex 1 Habitats	Potential to Negatively Affect Annex 2 Species	
	NH 010: Provide a riparian corridor of between 30 and 50 metres along the bank of the River Barrow for its ecological value and potential and to maintain it free from inappropriate Development	No	No	No	
	NH 011: Provide recreational amenities such as playgrounds and outdoor gym equipment;	No	No	No	
	NH 012: Protect environmental quality and implement site appropriate mitigation measures with respect to air quality, water quality, greenhouse gases, climate change, light pollution, noise pollution and waste management	No	No	No	
	NH 013: Facilitate the work of agencies redressing the issue of terrestrial and aquatic invasive species	No	No	No	
	Policy: It is the policy of both Councils to:				
	NH P1: Prohibit any development that would be harmful to or that would result in a significant deterioration of habitats and/or disturbance of species in any Special Protection Area (SPA), Special Area of Conservation (SAC) and candidate Special Area of Conservation (cSAC), Natural Heritage Area (NHA) and Proposed Natural Heritage	No	No	No	
	NH P2: Support and co-operate with statutory authorities and others in support of measures taken to manage proposed or designated sites in order to achieve their conservation objectives	No	No	No	
	NH P3: Protect, enhance and further develop the	No	No	No	

Strategic Aim/Policy	Portarlington Joint LAP Policies and Objectives	Potential to Negatively Affect Water Quality	Potential to Negatively Affect Annex 1 Habitats	Potential to Negatively Affect Annex 2 Species
	Green Infrastructure network in Portarlington and to strengthen links to the wider regional network			
	NH P4: Support the development of a green corridor connecting the recreation areas of Derrycastle Lakes and Trails, the River Barrow and the Peoples Park	No	No	No
	NH P5: Ensure heritage assets that are the focus for tourism development are appropriately managed and their special interest conserved from potential adverse effects from visitors or development in general and that best practice standards in relation for the environmental management of tourism enterprises are adhered	No	No	No
	NH P6: Support and promote, with the co-operation of landowners, public access to heritage sites and features at appropriate locations whilst ensuring heritage related development does not result in negative impacts on the fabric or setting of the town’s heritage assets	No	No	No
	NH P7: Support the implementation of Ireland’s Ancient East by facilitating the provision of visitor information in line with the policies and objectives with respect to heritage sites; and integrating the objectives of Ireland’s Ancient East with transport programmes in the County	No	No	No
	NH P8: Protect environmental quality in Portarlington through the implementation of European, National	No	No	No

Strategic Aim/Policy	Portarlington Joint LAP Policies and Objectives	Potential to Negatively Affect Water Quality	Potential to Negatively Affect Annex 1 Habitats	Potential to Negatively Affect Annex 2 Species
	and Regional policy and legislation relating to air quality, water quality, greenhouse gases, climate change, light pollution, noise pollution and waste management			
<p>Flood Management:</p> <p>Strategic Aim:</p> <p>To develop and improve flood alleviation measures throughout the town and rural hinterland so as to complement the overall strategy for economic and population growth and to achieve improved physical and environmental protection.</p>	<p>FM O1: Manage flood risk in accordance with the requirements of The Planning System and Flood Risk Management Guidelines for Planning Authorities, DECLG and OPW (2009) and Circular PL02/2014 (August 2014)</p>	No	No	No
	<p>FM O2: Support and co-operate with the OPW in delivering the South Eastern CFRAM Programme</p>	No	No	No
	<p>FM O3: To carry out infrastructural works in the Bog Road and Botley Lane areas of the town to alleviate flooding from the Blackstick Drain, a tributary of the River Barrow:</p> <ul style="list-style-type: none"> (i) Raise public road levels and improve road drainage infrastructure; (ii) Improve drainage channels in Blackstick Drain and contributing drains; (iii) Refurbish all culverts to the Blackstick Drain and contributing 	Yes. The completion of such works in areas with hydrological links to the River Barrow, will have the potential to result in adverse effects to water quality during the development of such infrastructure	Yes. Any adverse effects to water quality within the River Barrow will have the potential to result in adverse effects to the status of freshwater Annex 1 habitats that occur within the zone of influence of the plan, downstream along the River Barrow and River Nore SAC	Yes. Any adverse effects to water quality within the River Barrow will have the potential to result in adverse effects to the status of freshwater Annex 2 species that occur within the zone of influence of the plan, downstream along the River Barrow and River Nore SAC

Strategic Aim/Policy	Portarlington Joint LAP Policies and Objectives	Potential to Negatively Affect Water Quality	Potential to Negatively Affect Annex 1 Habitats	Potential to Negatively Affect Annex 2 Species
	<p>FM 04: To carry out a programme of dredging surface water drains and to continue to ensure that the drains are regularly maintained to minimise the risk of flooding</p>	<p>Yes. The completion of such works in areas with hydrological links to the River Barrow, will have the potential to result in adverse effects to water quality during the development of such infrastructure</p>	<p>Yes. Any adverse effects to water quality within the River Barrow will have the potential to result in adverse effects to the status of freshwater Annex 1 habitats that occur within the zone of influence of the plan, downstream along the River Barrow and River Nore SAC</p>	<p>Yes. Any adverse effects to water quality within the River Barrow will have the potential to result in adverse effects to the status of freshwater Annex 2 species that occur within the zone of influence of the plan, downstream along the River Barrow and River Nore SAC</p>
	<p>FM P1: In conjunction with the OPW implement a program of flood defence works for the town</p>	<p>Yes. The completion of such works in areas with hydrological links to the River Barrow, will have the potential to result in adverse effects to water quality during the development of such infrastructure</p>	<p>Yes. Any adverse effects to water quality within the River Barrow will have the potential to result in adverse effects to the status of freshwater Annex 1 habitats that occur within the zone of influence of the</p>	<p>Yes. Any adverse effects to water quality within the River Barrow will have the potential to result in adverse effects to the status of freshwater Annex 2 species that occur within the zone of influence of the plan,</p>

Strategic Aim/Policy	Portarlington Joint LAP Policies and Objectives	Potential to Negatively Affect Water Quality	Potential to Negatively Affect Annex 1 Habitats	Potential to Negatively Affect Annex 2 Species
			plan, downstream along the River Barrow and River Nore SAC	downstream along the River Barrow and River Nore SAC
	FM P2: Comply with DoEHLG Guidelines “The Planning System and Flood Risk Management – Guidelines for Planning Authorities (2009)” and any future Guidelines in relation to flood risk	No	No	No
	FM P3: Ensure development proposals within the areas outlined on Flood Risk Map are the subject of Site-Specific Flood Risk Assessment as outlined in “The Planning System and Flood Risk Management Guidelines” 2009	No	No	No
	FM P4: Ensure all development on lands identified as being at risk of flooding must demonstrate, through the carrying out of a Site Specific Flood Risk Assessment flood impact assessment and the use of Sustainable Urban Drainage Systems, that any flood risk can be adequately managed and the use or development of the lands will not cause unacceptable adverse impacts elsewhere	No	No	No
	FM P5: Co-operate with the OPW in relation to the development of the Catchment Flood Risk Assessment (CFRAM) South Eastern River Basin and for the River Barrow and its tributaries in particular and to comply with any guidance and recommendations of this flood	No	No	No

Strategic Aim/Policy	Portarlington Joint LAP Policies and Objectives	Potential to Negatively Affect Water Quality	Potential to Negatively Affect Annex 1 Habitats	Potential to Negatively Affect Annex 2 Species
	risk management plan;			
	FM P6: Incorporate the recommendations of the South Eastern CFRAM into any site specific flood risk assessment undertaken for individual sites/areas	No	No	No
	FM P7: Provide an appropriate set back from the edge of the watercourse and proposed developments to allow access for channel clearing/maintenance	No	No	No
	FM 08: Adhere to the requirements of the Inland Fisheries and National Parks and Wildlife Service in the construction of any flood alleviation measures	No	No	No
	FM 09: Comply with relevant provisions of the Arterial Drainage Action, 1945 and the Arterial Drainage (Amendment) Act 1995	No	No	No
	FM 010: Ensure protection of Natura 2000 sites supporting rivers and streams by avoiding development on flood plains and ensure flood risk assessment policies, plans or projects are compliant with Article 6 of the Habitats Directive and avoid or mitigate negative impacts on Natura 2000 sites	No	No	No

Land Use Zoning	Potential to Negatively Affect Water Quality	Potential to Negatively Affect Annex 1 Habitats	Potential to Negatively Affect Annex 2 Species
<p>Town Centre (Primary / Core Retail Area) Tier 1 lands</p> <p>Objective: <i>To protect and enhance the special physical and social character of the existing Town Centre and to provide for and improve retailing and commercial activities.</i></p>	<p>Yes. The support of new development within zoned lands, in areas adjacent to or hydrological linked to the River Barrow, will have the potential to result in adverse effects to water quality during the development of such infrastructure</p>	<p>Yes. Any adverse effects to water quality within the River Barrow and will have the potential to result in adverse effects to the status of freshwater Annex 1 habitats that occur within the zone of influence of the plan</p>	<p>Yes Any adverse effects to water quality within the River Barrow will have the potential to result in adverse effects to the status of freshwater Annex 2 species that occur within the zone of influence of the plan</p>
<p>Residential 1 Existing Residential</p> <p>Objective: <i>To protect and improve the amenity of developed residential communities</i></p>	<p>Yes. The support of new development within zoned lands, in areas adjacent to or hydrological linked to the River Barrow, will have the potential to result in adverse effects to water quality during the development of such infrastructure</p>	<p>Yes. Any adverse effects to water quality within the River Barrow and will have the potential to result in adverse effects to the status of freshwater Annex 1 habitats that occur within the zone of influence of the plan</p>	<p>Yes Any adverse effects to water quality within the River Barrow will have the potential to result in adverse effects to the status of freshwater Annex 2 species that occur within the zone of influence of the plan</p>
<p>Residential 2 – New Proposed Residential</p>	<p>Yes. The support of new development within zoned lands, in areas adjacent to or hydrological</p>	<p>Yes. Any adverse effects to water quality within the River</p>	<p>Yes Any adverse effects to water quality within the River</p>

Land Use Zoning	Potential to Negatively Affect Water Quality	Potential to Negatively Affect Annex 1 Habitats	Potential to Negatively Affect Annex 2 Species
<p>Objective: <i>To provide for new residential development, residential services and community facilities.</i></p>	<p>linked to the River Barrow, will have the potential to result in adverse effects to water quality during the development of such infrastructure</p>	<p>Barrow and will have the potential to result in adverse effects to the status of freshwater Annex 1 habitats that occur within the zone of influence of the plan</p>	<p>Barrow will have the potential to result in adverse effects to the status of freshwater Annex 2 species that occur within the zone of influence of the plan</p>
<p>Strategic Residential Reserve</p> <p>Objective: <i>To provide lands for future development in line with national and regional targets.</i></p>	<p>Yes. The support of new development within zoned lands, in areas adjacent to or hydrological linked to the River Barrow, will have the potential to result in adverse effects to water quality during the development of such infrastructure</p>	<p>Yes. Any adverse effects to water quality within the River Barrow and will have the potential to result in adverse effects to the status of freshwater Annex 1 habitats that occur within the zone of influence of the plan</p>	<p>Yes Any adverse effects to water quality within the River Barrow will have the potential to result in adverse effects to the status of freshwater Annex 2 species that occur within the zone of influence of the plan</p>
<p>Open Space & Amenity</p> <p>Objective: <i>To preserve, provide for and improve active and passive recreational open</i></p>	<p>Yes. The support of new development within zoned lands, in areas adjacent to or hydrological linked to the River Barrow, will have the potential to result in adverse effects to water quality during the development of such infrastructure</p>	<p>Yes. Any adverse effects to water quality within the River Barrow and will have the potential to result in adverse effects to the status of freshwater Annex 1 habitats that occur within the zone of</p>	<p>Yes Any adverse effects to water quality within the River Barrow will have the potential to result in adverse effects to the status of freshwater Annex 2 species that occur within the zone of influence of the plan</p>

Land Use Zoning	Potential to Negatively Affect Water Quality	Potential to Negatively Affect Annex 1 Habitats	Potential to Negatively Affect Annex 2 Species
<i>space.</i>		influence of the plan	
<p>Community, Educational & Institutional Services/Facilities</p> <p>Objective: <i>To protect and provide for local neighbourhood, community, ecclesiastical, recreational and educational facilities.</i></p>	<p>Yes. The support of new development within zoned lands, in areas adjacent to or hydrological linked to the River Barrow, will have the potential to result in adverse effects to water quality during the development of such infrastructure</p>	<p>Yes. Any adverse effects to water quality within the River Barrow and will have the potential to result in adverse effects to the status of freshwater Annex 1 habitats that occur within the zone of influence of the plan</p>	<p>Yes Any adverse effects to water quality within the River Barrow will have the potential to result in adverse effects to the status of freshwater Annex 2 species that occur within the zone of influence of the plan</p>
<p>Industrial & Warehousing</p> <p>Objective: <i>To provide for and improve industrial and warehousing development.</i></p>	<p>Yes. The support of new development within zoned lands, in areas adjacent to or hydrological linked to the River Barrow, will have the potential to result in adverse effects to water quality during the development of such infrastructure</p>	<p>Yes. Any adverse effects to water quality within the River Barrow and will have the potential to result in adverse effects to the status of freshwater Annex 1 habitats that occur within the zone of influence of the plan</p>	<p>Yes Any adverse effects to water quality within the River Barrow will have the potential to result in adverse effects to the status of freshwater Annex 2 species that occur within the zone of influence of the plan</p>

Land Use Zoning	Potential to Negatively Affect Water Quality	Potential to Negatively Affect Annex 1 Habitats	Potential to Negatively Affect Annex 2 Species
<p>Enterprise & Employment</p> <p>Objective: <i>To provide for enterprise and employment activities</i></p>	<p>Yes. The support of new development within zoned lands, in areas adjacent to or hydrological linked to the River Barrow, will have the potential to result in adverse effects to water quality during the development of such infrastructure</p>	<p>Yes. Any adverse effects to water quality within the River Barrow and will have the potential to result in adverse effects to the status of freshwater Annex 1 habitats that occur within the zone of influence of the plan</p>	<p>Yes Any adverse effects to water quality within the River Barrow will have the potential to result in adverse effects to the status of freshwater Annex 2 species that occur within the zone of influence of the plan</p>
<p>Transport & Utilities</p> <p>Objective: To provide for the needs of all transport users and other utility providers.</p>	<p>Yes. The support of new development within zoned lands, in areas adjacent to or hydrological linked to the River Barrow, will have the potential to result in adverse effects to water quality during the development of such infrastructure</p>	<p>Yes. Any adverse effects to water quality within the River Barrow and will have the potential to result in adverse effects to the status of freshwater Annex 1 habitats that occur within the zone of influence of the plan</p>	<p>Yes Any adverse effects to water quality within the River Barrow will have the potential to result in adverse effects to the status of freshwater Annex 2 species that occur within the zone of influence of the plan</p>