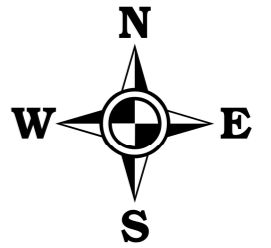
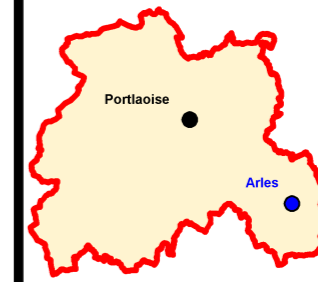
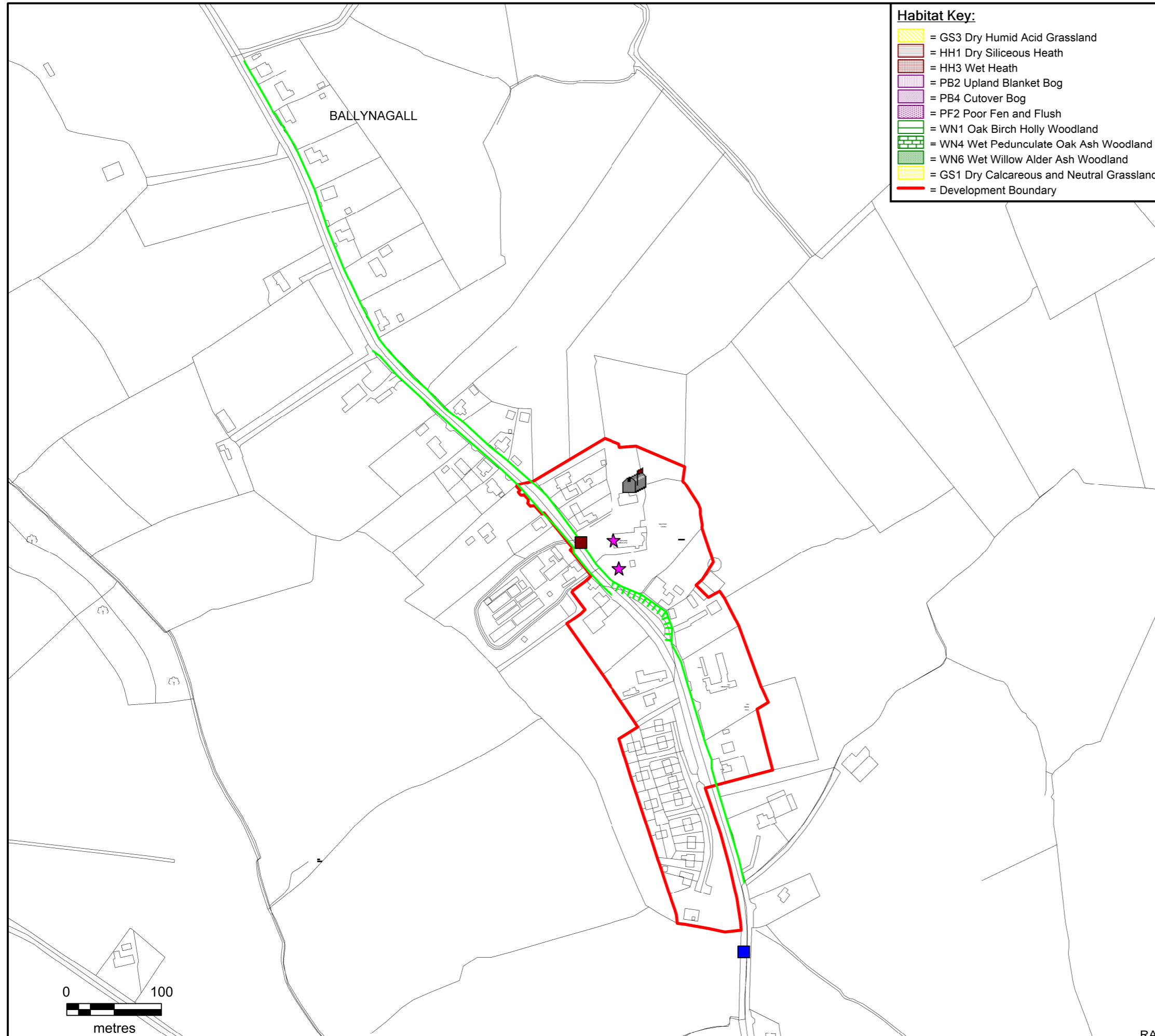


**ADOPTED 25/01/2022**  
**LAOIS COUNTY COUNCIL**  
**COUNTY DEVELOPMENT PLAN**  
**2021-2027**



**Habitat Key:**

- = GS3 Dry Humid Acid Grassland
- = HH1 Dry Siliceous Heath
- = HH3 Wet Heath
- = PB2 Upland Blanket Bog
- = PB4 Cutover Bog
- = PF2 Poor Fen and Flush
- = WN1 Oak Birch Holly Woodland
- = WN4 Wet Pedunculate Oak Ash Woodland
- = WN6 Wet Willow Alder Ash Woodland
- = GS1 Dry Calcareous and Neutral Grassland
- = Development Boundary



**Objective Legend:**

- = Welcome Sign
- = Protect Tree Stand
- = Signage Locations For Recycling
- = Recycling Centre Locations
- = Play Ground
- = Green Area
- = Seating & Bins
- = Picnic Area
- = Protected Structures
- = Designate Architectural Conservation Area (ACA)
- = Archaeological Zone
- = Provide Lime Killin Feature
- = School Flashing Lights
- = Traditional Lighting
- = New Lighting
- = Park and Ride Area
- = Area for Master Plan
- = Amenity Area
- = Provide or Improve Footpaths and Public Lighting
- = Up Grade and Construct Footpath where necessary
- = Provide Walkway on Riversides
- = Clean Out River
- = Maintain Natural Boundary
- = Development Boundary
- = Opportunity/Regeneration Sites
- = Traffic Calming Measures
- = Improve Junction Layout
- = Provision of Planting
- = Demarcation of Parking Spaces
- = Upgrade Open Space
- = Provide or Improve Pedestrian Crossing
- = Re-surface Area Within
- = Signage for School/Community Centre
- = Maintain Signage
- = Maintain Signage To Old Graveyard
- = Maintain Signage To For Emo Court
- = Set Down For Bus Area
- = New Dublin-Cork Bus Stop
- = Maintain Stone Wall

**MAP 8.1 (B) - ARLES**



**LAOIS COUNTY COUNCIL**  
**FORWARD PLANNING SECTION**

Drawn: Bryan Scully	Checked: David O'Hara & Nathan Smith	Approved: Angela McEvoy
------------------------	---	----------------------------

PRODUCED BY LAOIS COUNTY COUNCIL'S FORWARD PLANNING SECTION UNDER COPYRIGHT AGREEMENT FROM ORDNANCE SURVEY OF IRELAND. ALL RIGHTS RESERVED, LICENCE NO. 2022/28/CCMA/LAOISCOUNTYCOUNCIL